

FOR CONTROLLING MICE

For effective and efficient control of mouse infestations, use Good-Way .5% Warfarin Anticoagulant Concentrate by mixing 1 part Parfarin Concentrate with 9 parts (by weight) of a suitable bait material such as rolled oats, whole hulled oats, pancake mix or other bait material attractive to mice. Mice are "nibblers" and for this reason a double-strength mixture is suggested to obtain control in a minimum amount of time. Place tablespoon quantities of mixed bait in areas of mouse activity. Mice do not travel as extensively as do rats, so make more placements closer together—every 6 to 8 feet. Use a clean jar lid or similar receptacle. Place baits in locations not accessible to children, pets and domestic animals, or in tamper-proof bait boxes.

Placement of shallow containers of water alongside mouse bait may be helpful in speeding control. This may also be warfarinized as suggested under directions for controlling rats.

CAUTION: Keep away from humans, domestic animals and pets. If swallowed by humans, domestic animals or pets, this material may reduce the clotting ability of the blood and cause bleeding. In such cases, intravenous and oral administrations of Vitamin K combined with blood transfusions are indicated, as in the case of hemorrhage caused by overdose of bishydroxycoumarin. **IMPORTANT NOTICE: BAITING MUST BE CONTINUOUS UNTIL COMPLETE LACK OF FEEDING IS NOTED—USUALLY 5 TO 14 DAYS.**

Near dumps and other sources of continual infestation, use permanent bait stations and replenish as needed.

USDA Reg. No. 2006-8

GOOD-WAY WARFARIN

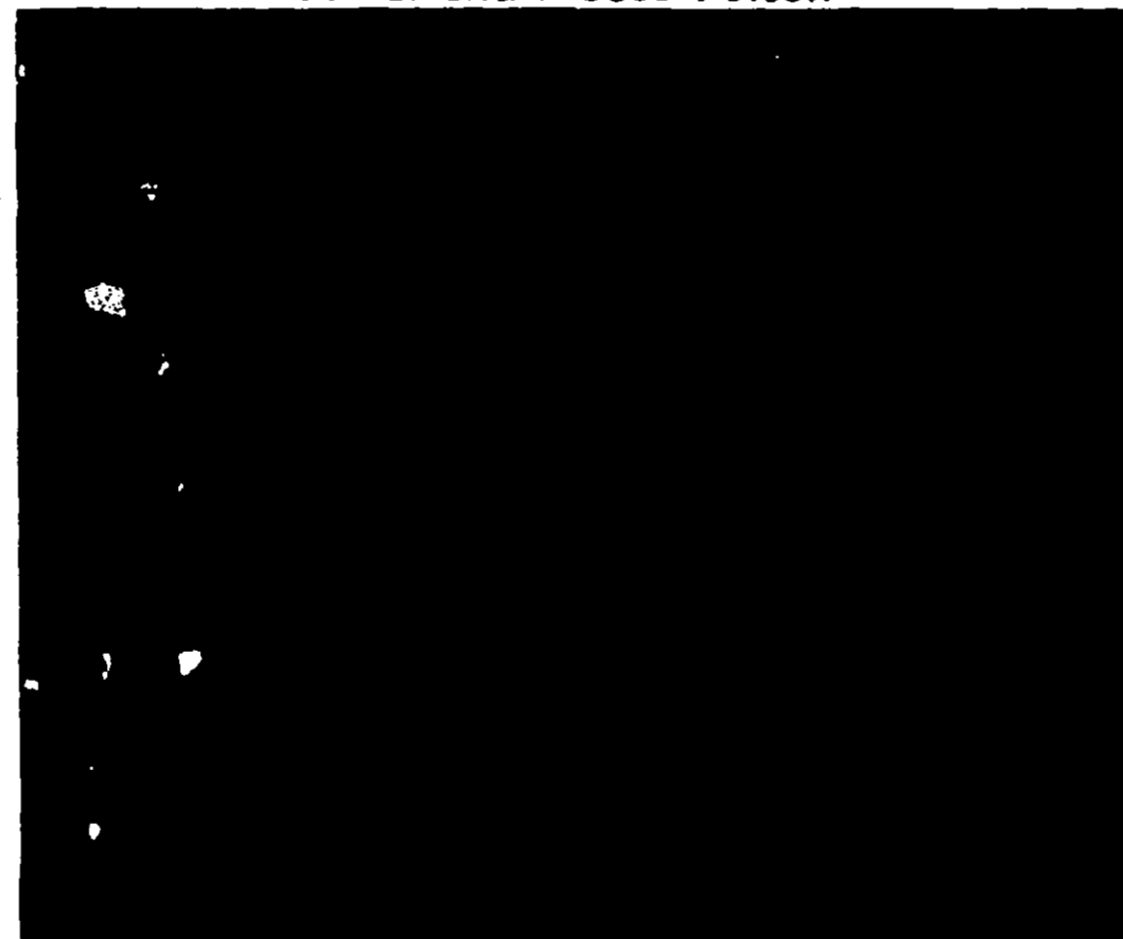
ANTICOAGULANT CONCENTRATE

(Containing 0.5% Warfarin)

RAT AND MOUSE KILLER

CONTENTS 8 OUNCES

Enough to Make 10 Pounds of Poisoned Bait
A Rat and Mouse Poison



FOR CONTROLLING RATS

Mix thoroughly 1 part Good-Way .5% Warfarin Anticoagulant Concentrate with 19 parts (by weight) of a suitable bait material such as freshly-ground whole yellow corn, rolled oats or other cereal grains that will be attractive to rats. If bait is very dusty, add up to a 5% of a bland edible oil such as mineral or corn oil. This 8 oz. package makes 5 lbs. of mixed bait containing .025% Warfarin when mixed as directed above.

Bait generously. Place 4 to 6 ounces or more of mixed bait where rats are known to feed and run. Pre-baiting is unnecessary. Place baits in locations not accessible to children, pets and domestic animals, or in tamper-proof bait boxes.

Replace baits as consumed and be sure that there is sufficient bait available at all times so that feeding is never interrupted for more than 24 hours. Rats will consume solid food and then look for water. You may increase bait consumption by placing water cups alongside the Warfarin bait. In order to give a "double-barrelled" bait exposure and speed up control, it is possible to warfarinize these water placements with Good-Way Rat and Mouse Killer Water Soluble Warfarin. Never use moldy, sour or decomposed baits.

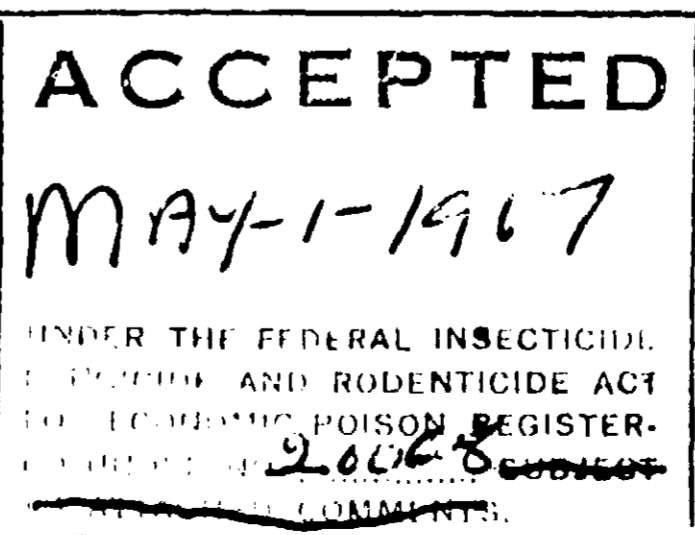
IMPORTANT NOTICE: BAITING MUST BE CONTINUOUS UNTIL COMPLETE LACK OF FEEDING IS NOTED—USUALLY 5 TO 14 DAYS.

Near dumps and other sources of continual infestation, use permanent bait stations and replenish as bait is consumed.

Manufactured by

GOOD-WAY INSECTICIDE, INC.

WHEELING, ILLINOIS



TURF CHINCH BUG CONTROL

HOMEOWNERS: Water dry lawn thoroughly before application to wet the turf. On thin turf apply 1 qt. of V-C 13 to 5,000 Sq. Ft. of lawn area (e.g., 50' x 100'); on thick turf (more than 1-1/2 inches of runners and accumulated organic matter above the soil surface) apply 2 qts. to 5,000 Sq. Ft. of lawn area.

V-C 13 may be applied with hose applicator or other spraying device. When Qt. size hose applicator is used, place 6 - 7 tablespoons of V-C 13 in a hose sprayer jar, fill with water and spray on 500 Sq. Ft. of lawn with thin turf. Use 12 tablespoons of V-C 13 in the quart sprayer jar when turf is thick.

COMMERCIAL OPERATORS: Apply V-C 13 at the rate of 1 qt. per 5,000 sq. ft. on thin turf using 100-150 gal. of water and wet the soil to a depth of 2-4 inches. For thick turf (more than 1-1/2 inches of runners and accumulated organic matter above the soil surface), apply 2 qts. to 5,000 sq. ft. of lawn space. Drench the treated area thoroughly after application. Do not graze treated turf.

Do not reuse empty drum. Return to dealer or destroy by perforating or crushing, and burying in a safe place.

NOTE: This product is toxic to fish and wildlife. Keep out of lakes, streams, and ponds.

WARNING: MAY BE FATAL IF SWALLOWED OR ABSORBED THROUGH SKIN.

Do not breathe spray mist. Use coarse spray only. Do not get on skin, in eyes, or on clothing.

If swallowed, give a tablespoonful of salt in a glass of warm water and repeat until vomit fluid is clear. In case of spillage of V-C 13, remove contaminated clothing and wash skin with soap and water. For eyes, wash with water for 15 min., and get medical attention. Wash thoroughly

after application. Wear clean clothing daily. Keep away from feed and food stuffs. Keep out of reach of children. Keep children and pets off treated area until this material has been thoroughly watered into the soil and completely dry.

ANTIDOTE IS ATROPINE (Contact Physician)

BUYER ASSUMES ALL RISKS OF USE, STORAGE OR HANDLING OF THIS MATERIAL NOT IN STRICT ACCORDANCE WITH DIRECTIONS GIVEN HEREWITH.