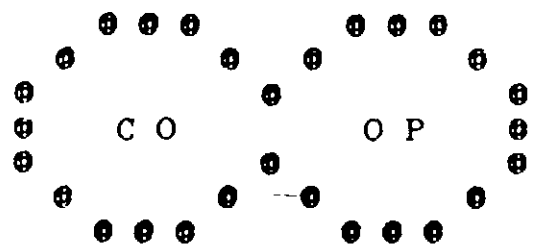


✓ EPA Reg. No. 1990-377
✓ EPA Est. No. 32761-MO-3

Code No. 21-6500

DRAFT



✓ ATRAZINE 80 W
80% Wettable Powder Herbicide

ACCEPTED
NOV 23 1988
Under the Federal Insecticide, Fungicide, and Rodenticide Act, as amended, for the pesticide registered under EPA Reg. No. 1990-377

Herbicide -- for season-long weed control in corn and sorghum

ACTIVE INGREDIENTS:

✓ Atrazine: 2-chloro-4-ethylamino-6-isopropylamino-s-triazine.....	76.0%
Related compounds.....	4.0%
INERT INGREDIENTS.....	20.0%
TOTAL.....	100.0%

Technical Atrazine Supplied by CIBA-GEIGY

KEEP OUT OF REACH OF CHILDREN

CAUTION

PRECAUCION AL USUARIO: Si usted no lee ingles, no use este producto hasta que le etiqueta haya sido explicado ampliamente.

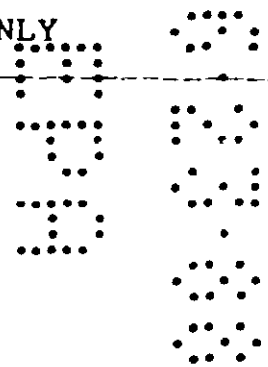
See additional precautionary statements and directions for use on bag.

FOR PROFESSIONAL OR AGRICULTURAL USE ONLY

✓ NET WEIGHT 25 POUNDS

✓ Manufactured by

FARMLAND INDUSTRIES, INC.
Kansas City, Missouri 64116



 * * * * *
 * STOP *
 * * * * *
 * READ ALL *
 * DIRECTIONS FOR *
 * USE AND *
 * PRECAUTIONS *
 * BEFORE *
 * USING. *
 * * * * *

PRECAUTIONARY STATEMENTS

Statement of Practical Treatment

First Aid Procedures

If poisoning is suspected, do not wait for symptoms to develop. Immediately begin the recommended procedures below. Contact a physician, or the nearest hospital or the nearest Poison Control Center. Tell the person contacted the type and amount of exposure, describe the symptoms and follow the advise given.

IF SWALLOWED: Drink 1 or 2 glasses of water and induce vomiting by touching back of throat with finger, or, if available, by administering Syrup of Ipecac. Do not induce vomiting or give anything by mouth to an unconscious person. Call a physician or the nearest Poison Control Center immediately.

ON SKIN: Immediately remove contaminated clothing, wipe away excess material from the skin. Wash with plenty of soap and water. Do not attempt to neutralize with chemical agents. If irritation occurs, obtain medical advice.

IN EYES: Immediately flush the eyes with large amounts of running water for a minimum of 15 minutes. Hold the eyelids apart during the flushing to ensure rinsing of the entire surface of the eye and lids with water. Do not attempt to neutralize with chemical agents. Obtain medical attention if irritation occurs.

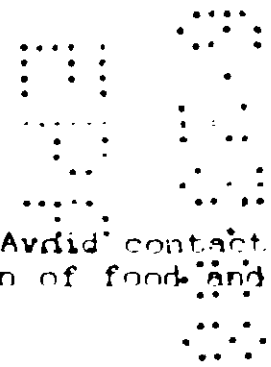
IF INHALED: Remove from contaminated atmosphere. If symptoms appear or person is unconscious, get medical attention.

CAUTION

Hazards to Humans and Domestic Animals

KEEP OUT OF REACH OF CHILDREN.

Harmful or fatal if swallowed. Do not get in eyes. Avoid contact with skin, inhalation of dust or spray mist and contamination of food and feed.



PRECAUTIONARY STATEMENTS
(Continued)

Environmental Hazards

Groundwater Protection:

Atrazine can travel (seep or leach) through soil and can enter groundwater which maybe used as drinking water. Atrazine has been found in groundwater. Users are advised not to apply atrazine to sand and loamy sand soils where the water table (groundwater) is close to the surface and where these soils are very permeable, i.e., well-drained. Your local agricultural agencies can provide further information on the type of soil in your area and the location of groundwater.

Fish and Wildlife Hazards

This pesticide is toxic to aquatic invertebrates. Do not apply directly to water or wetlands. Runoff and drift from treated areas may be hazardous to aquatic organisms in neighboring areas. Do not contaminate water by cleaning of equipment or disposal of wastes.

DIRECTIONS FOR USE

It is a violation of FEDERAL LAW to use this product in a manner inconsistent with its labeling.

REENTRY STATEMENT

Do not enter treated areas without protective clothing until sprays have dried. Protective clothing consists of long-sleeved shirt, long pants, gloves, hat and shoes.

Because certain states may require more restrictive reentry intervals for various crops treated with this product, consult your State Department of Agriculture for further information.

Written or oral warnings must be given to workers who are expected to be in a treated area or in an area about to be treated with this product. All workers not directly involved with the application of this product must be removed from the area to be treated. All other workers must be informed of the area which is to be treated and informed not to enter the area until such time as the spray has dried without the proper protective clothing listed above. In the event a worker is exposed to this product he should inform his supervisor immediately of the type of exposure in order that proper protective treatment may be given. When oral warning are given, warnings shall be given in a language customarily understood by workers. Oral warnings must be given if there is reason to believe that written warnings cannot be understood by workers. Written warnings must include the following information: "CAUTION: Area treated with Atrazine on (insert date of treatment). Do not enter without appropriate protective clothing until spray has dried. In case of accidental exposure inform supervisor immediately."

STORAGE AND DISPOSAL

Storage

Keep this material out of the reach of children.

Store only in the original container. Containers must be stored in a cool, dry, well ventilated area. Store away from food, feeds and fertilizers. Do not contaminate water, food, or feed by storage or disposal.

Spill or Leak Procedures

In the event of a spill or leak make sure all personnel involved in spill cleanup follow good industrial hygiene practices.

Small spills can be handled routinely. Sweep up the material and place in an appropriate chemical waste container. Seal container and dispose of according to "Pesticide" disposal instructions below. Wash the spill area with water containing a strong detergent. Flush the spill area with water to remove any residue. Do not allow wash water to contaminate water supply.

Disposal

Containers: Completely empty bag into application equipment. Then dispose of empty bag in a sanitary landfill or by incineration, or, if allowed by State and local authorities, by burning. If burned, stay out of smoke.

Pesticides: Wastes resulting from the use of this product may be disposed of on site or at an approved waste disposal facility

CONDITIONS OF SALE AND WARRANTY

Conditions of Sale

This product is sold subject to and buyer and users are deemed to have accepted the terms contained in the CONDITIONS OF SALE AND WARRANTY, DIRECTIONS FOR USE AND PRECAUTIONARY STATEMENTS, which may be varied only by agreement in writing by a duly authorized representative of FARMLAND INDUSTRIES, INC.

Inherent Risks

The directions for use of this product reflect the opinion of experts based on field use and tests. The directions are believed to be reliable and should be followed carefully. However, it is impossible to eliminate all risks inherently associated with use of this product..... Crop injury, ineffectiveness or other unintended consequences may result because of such factors as presence of other materials or use of the product in a manner inconsistent with its labeling, all of which are beyond the control of FARMLAND INDUSTRIES, INC., or the seller. All such risks shall be assumed by the buyer

.....
.....
.....
.....
.....

Warranty Limitations

FARMLAND INDUSTRIES, INC., warrants that this product conforms to the chemical description on the label and is reasonably fit for the purposes referred to in the DIRECTIONS FOR USE, subject to the inherent risks referred to above. FARMLAND INDUSTRIES, INC., MAKES NO OTHER EXPRESSED OR IMPLIED WARRANTY OF FITNESS OR MERCHANTABILITY OR ANY OTHER EXPRESSED OR IMPLIED WARRANTY.

Limitation of Liability

In no case shall FARMLAND INDUSTRIES, INC., or the seller be liable for consequential, special or indirect damages resulting from the use or handling of this product. No claim of any kind shall be greater in amount than the purchase price of the product in respect of which such damages are claimed.

Do not reuse empty container.

Apply this product only as specified on this label.

GENERAL INFORMATION

Atrazine 80W herbicide will control most annual broadleaf and grass weeds in corn, sorghum and sugarcane. It will also control most annual and many perennial broadleaf and grass weeds in noncrop areas and industrial sites. Atrazine 80W may be applied before or after weeds emerge.

The continuous use of this product and other triazines may cause the development of biotypes of grasses and broadleaf weeds that cannot be effectively controlled. Where this is known or suspected, Atrazine 80W should be either tank mixed with or used in conjunction with a registered grass herbicide approved for use with Atrazine which is not in the triazine class of chemicals. Read and follow all directions for use and precautions on the labels of products to be tank mixed with Atrazine. Consult your State Extension Service for specific recommendations for your area.

In each case where a range of rates is given, the lower rate should be used on light soils and soils low in organic matter; the higher rate should be used on heavy soils and soils high in organic matter.

Since Atrazine 80W acts mainly through root absorption, its effectiveness depends on rainfall or irrigation to move it into the root zone... Should weeds develop, particularly under dry or minimal moisture conditions, a shallow cultivation or rotary hoeing will generally result in better weed control.

Atrazine 80W is a wettable powder that should be mixed with water and applied as a spray. Make a slurry by adding Atrazine 80W to water. Pour the slurry into the spray tank during or after filling. Sufficient hydraulic (jet) or mechanical agitation should be provided during mixing and application to keep the material in suspension.

Wash sprayer thoroughly immediately after use.

Atrazine 80W is noncorrosive to equipment and metal, nonflammable and has low electrical conductivity.

Care should be taken to avoid using Atrazine 80W where adjacent desirable trees, shrubs, or plants might be injured.

Store Atrazine 80W in a dry place.

Ground Application:

For uniform distribution in broadcast applications, TeeJet 8003 or 8004 fan type or similar nozzles with openings of equal or greater size should be used. For band applications use TeeJet 8003-E or 8004-E or similar type nozzles. Screens in nozzles as well as those in suction and in-line strainers should be not finer than 50-mesh size. A suitable pump with capacity to deliver 10 to 20 gpm should be used and operation pressure should be 35 to 40 psi. Use 20 to 40 gals. of water per acre to assure even coverage unless otherwise specified.

Aerial Application:

Use only where broadcast applications are specified. Apply a minimum of 1 gal. of water for each 1 to 1 1/2 lbs. of Atrazine 80W to be applied per acre.

Avoid application under conditions where uniform coverage cannot be obtained or where excessive spray drift may occur.

CHEMIGATION APPLICATIONS:

Apply this product only through sprinkler including center pivot irrigation systems. Do not apply this product through any other type of irrigation system.

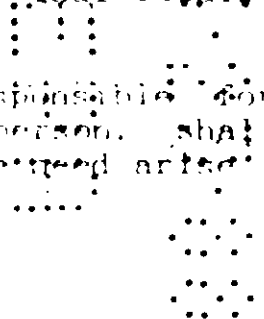
Crop injury, lack of effectiveness, or illegal pesticide residues in the crop can result from nonuniform distribution of treated water.

If you have any questions about calibration, you should contact State Extension Service specialists, equipment manufacturers or other experts.

Do not connect an irrigation system (including greenhouse systems) used for pesticide applications to a public water system unless the pesticide label prescribed safety devices for public water systems are in place.

A public water system means a system for the provision to the public of piped water for human consumption if such system has at least 15 service connections or regularly serves an average of a least 25 individuals daily at least 60 days out of the year.

A person knowledgeable of the chemigation system and responsible for its operation, or under the supervision of the responsible person, shall shut the system down and make necessary adjustments should the need arise.



7/1/10

The system must contain a functional check valve, vacuum relief valve, and low pressure drain appropriately located on the irrigation pipeline to prevent water source contamination from backflow.

The pesticide injection pipeline must contain a functional, automatic, quick-closing check valve to prevent the flow of fluid back toward the injection pump.

The pesticide injection pipeline must also contain a functional, normally closed, solenoid-operated valve located on the intake side of the injection pump and connected to the system interlock to prevent fluid from being withdrawn from the supply tank when the irrigation system is either automatically or manually shut down.

The system must contain functional interlocking controls to automatically shut off the pesticide injection pump when the water pump motor stops.

The irrigation line or water pump must include a functional pressure switch which will stop the water pump motor when the water pressure decreases to the point where pesticide distribution is adversely affected.

System must use a metering pump, such as a positive displacement injection pump (i.e., diaphragm pump) effectively designed and constructed of materials that are compatible with pesticides and capable of being fitted with a system interlock.

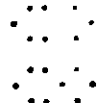
Do not apply when wind speed favors drift beyond the area intended for treatment.

Preeemergence or Postemergence Sprinkler or Center Pivot Application:

Apply this product alone, or in tank mixtures with other herbicides on this label which are registered for sprinkler or center pivot application, with irrigation water. Apply either after planting before crop and weeds emerge, or after crop emergence; but before lay-by (20-30 inches) and before weeds exceed 1.5 inches in height. Apply at rates recommended on this label. Prepare mixture with a minimum of 1 part water to 1 part product. Injecting a larger volume of a more dilute slurry per hour will assure more accurate calibration of metering equipment. Maintain sufficient agitation to keep herbicide in suspension. Meter slurry into irrigation water during entire period. Apply in 1/2 to 1 inch of water. Use the lower water volume on coarser textured soils, the higher volume on finer textured soils. More than 1 inch of water may reduce weed control by moving herbicide below the effective zone in the soil.

Precautions:

- (1) Inject ahead of any right turn in the main line to insure adequate mixing.
- (2) Applications when drift may occur from windy conditions, when system joints and connections are leaking, or when nozzles are not providing uniform distribution may cause crop injury.
- (3) Where sprinkler distribution patterns do not overlap sufficiently, unacceptable weed control may result. Where sprinkler distribution patterns overlap excessively, crop injury may result.



CORN

One application will control most annual broadleaf and grass weeds such as barnyardgrass, witchgrass, yellow foxtail, wild oats, crabgrass, giant foxtail, velvetleaf, morningglory, lambsquarters, pigweed, ragweed, night shade, purslane, and mustard. Atrazine 80W may be applied whether before planting, at planting, or after planting using 2 1/2 to 5 lbs. per acre as indicated below.

For pre-plant and pre-emergence application, nitrogen solutions or complete liquid fertilizers may replace all or part of the water as a carrier for Atrazine 80W. Do not apply after corn has emerged as there is a danger of liquid fertilizers causing crop injury.

Preplant:

Broadcast in the spring after plowing at the rate indicated in the table below. Application may be made before, during, or after final seedbed preparation. If soil is tilled or worked after application, avoid deep incorporation of Atrazine 80W. Best results have been obtained when Atrazine 80W is applied within 2 weeks prior to planting.

Pre-Emergence:

Apply during or shortly after planting prior to weed emergence at the rate indicated in the table below.

Post-Emergence:

Apply during or shortly after planting prior to weed emergence at the rate indicated in the table below.

Post-Emergence:

Apply before weeds exceed 1 1/2 inches in height, at the rate indicated in the table below.

NOTE: For band applications reduce the broadcast rate of Atrazine 80W in proportion to the area treated.

Soil Type	Rate Per Acre of Atrazine 80W		
	Broadcast in 20-40 gals. of water/Acre	20-inch Band* in 10-20 gals. of water/Acre	13-inch Band* in 7-14 gals. of water/Acre
Light Soils: Sands, loamy sands and sandy loams	2 1/2 lbs.	1 1/4 lbs.	13 ozs.
Medium Soils: silt and clay loams that are low in organic matter	3 lbs.	1 1/2 lbs.	1 lb.
Heavy Soils: Silt and clay loams with medium to high organic matter and clays	3 3/4 lbs.	1 lb. 14 ozs.	1 1/4 lbs.
Peats, mucks, and high organic clays (apply post- emergence only)	3 3/4 lbs.	1 lb. 14 ozs.	1 1/4 lbs.

* Base on 40-inch row spacing. For other band or row widths adjust the rate in proportion to the area actually treated.

Post-Emergence Weed Control with Atrazine 80W-Oil-Water Emulsions:

The addition of oil to Atrazine 80W in water sprays may speed the activity of Atrazine 80W and provide quicker kill of weeds. However, under certain conditions may seriously damage corn. To minimize the possibility of damage to corn, follow the directions, procedures, and precautions given below.

Ground Application:

Broadcast 2 1/2 lbs. of Atrazine 80W and 1 gal. of emulsifiable oil* in 20 to 40 gals. of water per acre after emergence but before weeds reach 1 1/2 inches in height

Aerial Application:

Broadcast 2 1/2 lbs. of Atrazine 80W and 1/2 gal. of emulsifiable oil* in no less than 5 gals. of water per acre after weed emergence but before weeds reach 1 1/2 inches in height

- * For combining with Atrazine 80W, use a crop oil designated for use with Atrazine 80W containing at least 1 percent suitable emulsifier. Several oils of this type are on the market. Oils contaminated with water or other materials can cause compatibility problems and/or crop injury.

Procedures:

- (1) Thoroughly clean sprayer prior to use. Do not use sprayer contaminated with 2,4-D or other materials as corn damage or sprayer clogging may result.
- (2) In a separate container, make a thin slurry of Atrazine 80W in water, thoroughly wetting the Atrazine 80W.
- (3) Fill the spray with water, allowing for the addition of the Atrazine 80W.
- (4) With the agitation system in operation, add the Atrazine 80W slurry.
- (5) Add the emulsifiable oil last.
- (6) Empty the tank as completely as possible before refilling to prevent a build-up of oil in the tank. Keep the agitation system in operation to avoid a separation of the oil from the water in the spray mixture still remaining in the tank.
- (7) In an oil film starts to build up in the tank, drain the tank and clean out with a strong detergent solution or solvent.
- (8) Clean the sprayer immediately after use by flushing the system with water containing a detergent.

NOTE:

- (1) Do not use oil in Atrazine 80W sprays when corn is under stress from prolonged cold, wet weather, poor fertility, or other factors or when corn is wet and succulent from recent rainfall as crop injury may occur.
- (2) Do not use oil in sprays when treating inbred lines or any breeding stock as injury may occur.
- (3) Adding other insecticides, herbicides, liquid fertilizers, or other materials is not recommended with Atrazine 80W-Oil-Water emulsions because they may cause compatibility problems or crop injury.
- (4) Store and handle emulsifiable oil carefully. Oil contaminated with even a small amount of water may not emulsify properly when added to the tank.
- (5) Do not make more than one application of Atrazine 80W-Oil-Water spray per season.

Precautions:

- (1) Do not apply more than 5 lbs. of Atrazine 80W to corn in any one year.
- (2) Land treated with Atrazine 80W should not be planted to any crop except corn until the following year or injury may occur.
- (3) Following harvest of a treated crop, plow and thoroughly till the soil in fall or spring to minimize possible injury to rotational, spring seeded, crops regardless of the rate used.
- (4) If Atrazine 80W is applied after June 10, do not rotate with crops other than corn or sorghum the next year or injury may occur.
- (5) If Atrazine 80W is used at a broadcast rate higher than 3 1/4 lbs. per acre (or comparable rates in a band application), a crop of untreated corn or sorghum should precede the next rotational crop.

- (6) In the High Plains and Intermountain areas of the West where rainfall is sparse and erratic or where irrigation is required, use Atrazine 80W to control weeds in corn only when corn is to follow corn or a crop of untreated corn or sorghum is to precede other rotational crops.
- (7) In western Minnesota and eastern parts of the Dakotas, Nebraska and Kansas, corn treated with Atrazine 80W should not be followed with soybeans if the broadcast rate applied was more than 2 1/2 lbs. per acre (or comparable rate in a band) or injury may occur.
- (8) Do not plant sugar beets, tobacco, vegetables (including dry beans), spring-seeded small grains, or small-seeded legumes and grasses the year following Atrazine 80W application or injury may occur.
- (9) Do not graze treated areas or feed treated forage to livestock for 21 days following application.

Northern Nutgrass or Yellow Nutsedge (Cyperus Esculentus) Control:

Broadcast 5 lbs. per acre pre-plant, pre-emergence or post-emergence before nutgrass is more than 1 1/2 inches high. If applied before nutgrass begins growth, cultivate within 2-3 weeks. If applied after nutgrass has emerged, cultivate within 10-14 days.

Quackgrass Control on Land Going Into Corn Production:

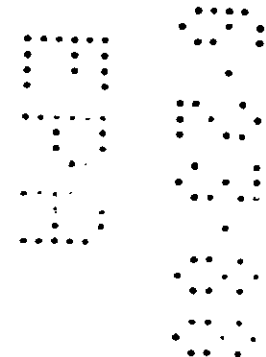
Split Application: Broadcast 2 1/2 lbs per acre in the fall or spring and plow 1-3 weeks later. Broadcast a second application at the rate of 2 1/2 lbs. per acre in the spring before, during or after planting, but before weeds are 1 1/2 inches high. The split application will control both quackgrass and most annual broadleaf and grass weeds.

Single Application: Broadcast 3 3/4 - 5 lbs per acre in the fall or spring. Plow 1-3 weeks after application.

SORGHUM AND SORGHUM-SUDAN HYBRIDS (GRAIN AND FORAGE TYPES)

Atrazine 80W may be used to control many annual broadleaf and grass weeds in sorghum.

Apply at the rate indicated in the tables below. Weeds should not be more than 1 1/2 inches high at time of application. When making band application, reduce the broadcast rate per acre in proportion to the area treated.



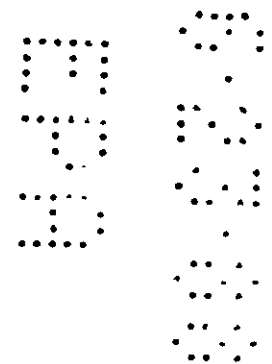
Preplant ** and Pre-Emergence Application (in Eastern and Central Nebraska and Northeastern Kansas Only)

Broadleaf and Grass Control

Soil Type	Rate Per Acre of Atrazine 80W		
	Broadcast in 20-40 gals. of water/Acre	20-inch Band* in 10-20 gals. of water/Acre	13-inch Band* in 7-14 gals. of water/Acre
Sand to sandy loam, eroded slopes and soils low in organic matter	DO NOT USE		
Other Soils (shallow incorporation may improve control)	1 1/2 to 3 lbs.	1 1/4 to 1 1/2 lbs.	13 ozs to 1 lb.

* Based on 40-inch row spacing.

** See pre-plant recommendation for corn. Non-pressure nitrogen solutions or complete liquid fertilizers may be substituted for all or part of the water as a carrier for Atrazine 80W. Do not apply nitrogen solutions fertilizers after crop emergence as damage may result.



Post-Emergence Application**

Weeds to be controlled and Soil Type	State or height of sorghum at treatment	Rate per acre of Atrazine 80W		
		Broadcast in 20-40 gals. of water per acre	20" band* in 10-20 gals. of water per acre	13" band* in 7-14 gals. of water per acre
Broadleaf and grass weeds Sandy or loamy sand		DO NOT USE		
Sandy loam		See Broadleaf Weeds Below		
Silt loam to sandy clay loam	Completely emerged	2 1/2 to 3 lbs.	1 1/4 to 1 1/2 lbs	13 ozs. to 1 lb.
Olton and Pullman clay soils	At least 6 inches high	2 1/2 to 3 lbs.	1 1/4 to 1 1/2 lbs	13 ozs. to 1 lb.
Silt Clay loams and heavier soils	Completely emerged	3 3/4 lbs.	1 lb. 14 ozs	1 1/4 lbs
Broadleaf Weeds				
Sandy loams and heavier soils in Okla., N.M., Tex., West Kans., Colo., and desert regions of Ariz. and Calif. only	At least 6 inches high	1 1/2 lbs plus 3/4 to 1 1/2 pts. surfactant	3/4 lb. plus 3/8 to 3/4 pt. surfactant	1/2 lb. plus 1/4 to 1/2 pt. surfactant

* Based on 40-inch row spacing.

** Up to "close-in"

Post-Emergence Broadleaf Weed Control With Atrazine 80W Oil-Water Emulsions (New Mexico, Oklahoma, and Texas only.)

The addition of oil to post-emergence Atrazine 80W water sprays may speed the activity of Atrazine 80W and provide quicker kill of annual broadleaf weeds. However, under certain conditions, the use of oil may seriously damage sorghum. To minimize the possibility of damage to sorghum, follow the directions and procedures given below.

Ground Application:

Broadcast 1 1/2 lbs. of Atrazine 80W and 1 gal. of emulsifiable oil* in 20-40 gals. of water per acre when sorghum is 6-10 inches in height and before it reaches the boot stage. Treat before broadleaf weeds reach 6 inches in height.

Aerial Application:

Broadcast 1 1/2 lbs. of Atrazine 80W in 1/2 gal. of emulsifiable oil* in no less than 5 gals. of water per acre. When sorghum is 6-10 inches in height and before it reaches the boot stage. Treat before broadleaf weeds reach 6 inches in height.

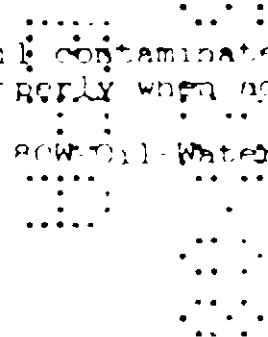
* For combining with Atrazine 80W, crop oil designated for use with Atrazine 80W containing at least 1 percent suitable emulsifier. Several oils of this type are on the market. Oils contaminated with water or other materials can cause compatibility problems and/or crop injury.

Procedures:

- 1) Thoroughly clean sprayer prior to use. Do not use sprayer contaminated with 2,4-D or other materials as sorghum damage or sprayer clogging may result.
 - 2) In a separate container, make a thin slurry of Atrazine 80W in water, thoroughly wetting the Atrazine 80W.
 - 3) Fill the spray with water, allowing for the addition of the Atrazine 80W.
 - 4) With the agitation system in operation, add the Atrazine 80W slurry.
 - 5) Add the emulsifiable oil last.
 - 6) Empty the tank as completely as possible before refilling to prevent a build-up of oil in the tank. Keep the agitation system in operation to avoid a separation of the oil from the water in the spray mixture still remaining in the tank.
 - 7) If an oil film starts to build up in the tank, drain the tank and clean out with a strong detergent solution or solvent.
- Clean the sprayer immediately after use by flushing the system with water containing a detergent.

NOTE:

- 1) Do not use oil in Atrazine 80W sprays when sorghum is under stress from prolonged cold, wet weather, poor fertility, or other factors or when sorghum is wet and succulent from recent rainfall as crop injury may occur.
- 2) Do not use oil in sprays when treating inbred lines or any breeding stock as injury may occur.
- 3) Adding other insecticides, herbicides, liquid fertilizers, or other materials because they may cause compatibility problems or crop injury.
- 4) Store and handle emulsifiable oil carefully. Oil contaminated with even a small amount of water may not emulsify properly when added to the tank.
- 5) Do not make more than one application of Atrazine 80W Oil-Water spray per season.



Precautions:

- (1) Heavy rains immediately following application tend to result in excessive concentrations of herbicide in seed furrow, resulting in possible crop injury. Applications to furrow-planted sorghum should not be made until furrows are leveled (plowed-in). Deep planter marks or seed furrows should also be leveled before application.
- (2) Application to sorghum growing under stress caused by minor element deficiency or to sorghum growing on highly calcareous soils may result in crop injury.
- (3) Do not plant any rotational crops other than those specified in the Suggestions for Rotational Crops section below for 18 months following application.
- (4) Do not graze or feed forage from treated areas for 21 days following application.
- (5) Crop injury may occur when this herbicide is either applied preplant incorporated or pre-emergence in conjunction with an at-planting systemic insecticide.

Suggestions for Rotational Crops:

- (1) Sorghum or corn may be planted the year following treatment.
- (2) All other rotational crops may be planted 18 months after application.
- (3) When the broadcast rate used does not exceed 1 1/2 lbs. per acre, fall wheat may be planted 15 months after application.

FOREST AND CHRISTMAS TREE PLANTATIONS

Douglas Fir, Grand Fir, Noble Fir, Lodgepole Pine, Ponderosa Pine, and Scotch Pine (Pacific Northwest - west of Cascades only.)

Annual broadleaf and grass weed control:

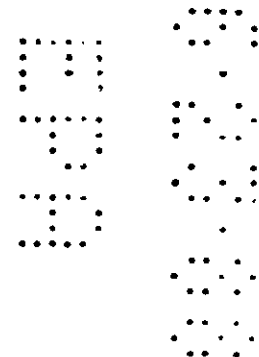
Broadcast 2 1/2 to 5 lbs. in sufficient water to assure thorough coverage. For band application, reduce the rate of Atrazine 80W and volume of water in proportion to the area treated. For example, when treating a 4-foot band over trees planted in rows 2 feet apart, apply 1 1/4 to 2 1/2 lbs. per acre. Apply between fall and early spring while trees are dormant or soon after transplanting and before weeds are 1 1/2 inches high.

Quackgrass control:

Broadcast 5 lbs. per acre in sufficient water for adequate coverage. Apply in fall or early spring while trees are dormant and before weed seedling are more than 1 1/2 inches high. This application will also control most annual broadleaf and grass weeds.

Precautions:

- (1) Do not graze treated areas.
- (2) Do not apply to seedbeds.
- (3) Do not make more than one application per year.



NONSELECTIVE WEED CONTROL ON NONCROP LAND: FOR USE ON FENCE ROWS, AROUND UTILITY POLES AND SIMILAR NONCROP AREAS.

Apply Atrazine 80W at rates recommended below before or soon after weeds begin growth. Post-emergence application should be made when weeds are young and actively growing. Use the higher rates on heavy clay and muck soils. Do not contaminate domestic or irrigation water supplies, or lakes, streams, or ponds. Use sufficient water to assure thorough coverage. Use at least 1 gallon of water for each pound of Atrazine 80W, more if practical. Mechanical bypass or jet agitation is necessary to keep Atrazine 80W in suspension during application.

Most annual broadleaf and grass weeds: Broadcast 6 to 12 1/2 lbs. per acre.

Hard-to-kill annual and many perennial broadleaf and grass weeds: Broadcast 12 1/2 to 25 lbs. per acre.

For longer residual control in regions of high rainfall and a long growing season, apply 25 to 50 lbs. broadcast per acre.

Hard-to-kill biennial and perennial weeds such as bull thistle and sowthistle: Broadcast 25 to 50 lbs. per acre.

For small areas, 4 1/2 ounces per 100 sq. ft. is equivalent to 12 1/2 lbs. per acre.

SUGARCANE

For control of most nonrhizomatous weeds, such as crabgrass, jungle rice, wiregrass, foxtail, amaranths, Florida's paintbrush, fireweed and similar plants:

Broadcast 2 1/2 to 5 lbs. per acre in sufficient water for adequate coverage of the soil surface at time of planting or ratooning, but before the cane emerges. One additional application may be made over the cane as it emerges, and two additional applications may be made interline after emergence, as a directed spray.

For control of emerged Peillitory Weed (artillery weed)(Florida only):
Apply 1/2 to 3/4 lb. per acre in at least 4 gals. of water per acre as a directed spray. Add 2 qts. of surfactant for each 50 gals. of spray and be sure weed forage is thoroughly covered.

Precautions:

- (1) Do not apply Atrazine 80W after close-in
- (2) Do not apply more than 12 1/2 lbs. of Atrazine 80W to any one crop of cane