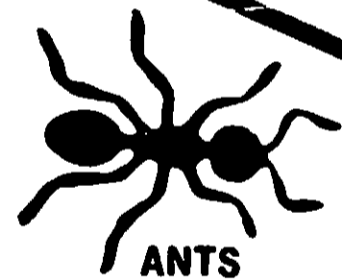


Parsons

HEAVY DUTY Bug Killer

KILLS TOUGH BUGS



ANTS



FLYING MOTHS



CRICKETS



FLEAS



SPIDERS



HOUSE FLIES



BEEES



CARPET BEETLES



BROWN TICKS



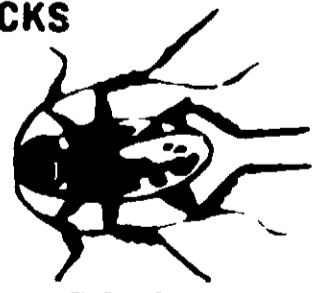
SILVERFISH



WASPS



MOSQUITOES



ROACHES

Parsons

RESIDUAL: KILLS EVEN RESISTANT ROACHES, ANTS AND FLIES. KILLS HONEY BEES, WASPS, HORNETS, YELLOW JACKETS, GNATS — Spray thoroughly all nests and places where insects abide, hitting as many as possible. It is more difficult to control bees that enter a structure through a small hole. Therefore, it is advisable that some of the side boards or other obstruction be removed so that spray can penetrate the nest and hit the insects. Repeat treatment as necessary.

CAUTION

Keep out of reach of children. Harmful if swallowed. Avoid contamination of feed and foodstuffs. Avoid inhalation and skin contact; wash thoroughly after using. Do not use on humans, pets or vegetation. Do not use, pour, spill, or store near heat or open flame. Do not allow children in treated areas until surfaces are dry.

DIRECTIONS FOR USE

HEAVY DUTY BUG KILLER LIQUID KILLS EVEN RESISTANT ROACHES, ANTS — For use indoors or outdoors. Application: Pour into sprayer. Spray infested surfaces only until wet.

ROACHES, ANTS, WATERBUGS, SILVERFISH, SOWBUGS, SPRINGTAILS, SPIDERS, FIREBRATS, CRICKETS, EARWIGS: Spray until wet, surfaces behind and beneath cabinets, refrigerators, sinks, stoves, ant trails and other localized areas infested with insects. For treatment around window frames and door frames, where ants enter. Repeat as necessary.

CARPET BEETLES: Make localized application to areas of the floor and baseboards. Spray directly into cracks and under carpets where insects may be found. Treat crevices, cracks and infested areas of shelving in closets. Repeat as necessary.

BROWN DOG TICKS AND FLEAS: Spray infested areas around baseboards, window and door frames, wall cracks, sleeping quarters of pets and localized areas of floors and floor coverings. Repeat as necessary. Bedding should be replaced in animal quarters after treatment. Do not treat animals.

FLIES, MOSQUITOES, WASPS AND FLYING MOTHS — OUTDOORS: For outdoor use only as an aid in reducing annoyance from these insects. Spray outside surfaces of screens, doors, around window frames or wherever these insects may enter the room. Also treat surfaces around light fixtures on porches, in garages and other places where these insects alight or congregate.

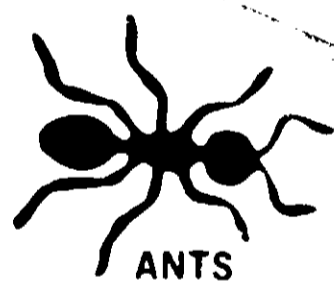
CHIGGERS, ANTS, BROWN DOG TICKS, CLOVER MITES AND FLEAS — OUTDOORS: For treatment of localized infestations of insects in outdoor areas spray infested areas, including spraying of weeds and brushy non-crop areas around the home.

For ants, wet hills and runways. Repeat as necessary.

Parsons

HEAVY DUTY Bug Killer

KILLS TOUGH BUGS



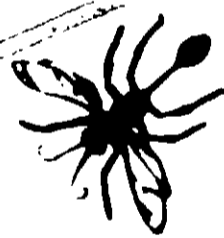
ANTS



SPIDERS



CARPET BEETLES



WASPS



FLYING MOTHS



MOSQUITOES



CRICKETS



BROWN TICKS



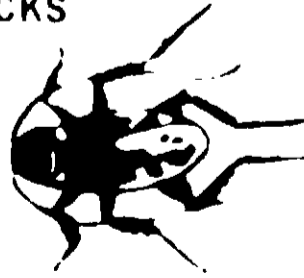
FLEAS



BEEES



SILVERFISH



ROACHES

CAUTION: KEEP OUT OF REACH OF CHILDREN
(See Direction Panel For Additional Cautions)

Parsons

RESIDUAL: KILLS EVEN PERSISTANT ROACHES, ANTS AND FLIES, KILLS HONEY BEES, WASPS, HORNETS, YELLOW JACKETS, GNATS — Spray thoroughly all nests and places where insects abide, hitting as many as possible. It is more difficult to control bees that enter a structure through a small hole. Therefore, it is advisable that some of the side boards or other obstruction be removed so that spray can penetrate the nest and hit the insects. Repeat treatment as necessary.

Keep out of reach of children. Harmful if swallowed. Avoid contamination of feed and foodstuffs. Avoid inhalation and skin contact; wash thoroughly after using. Do not use on humans, pets or vegetation. Do not use, pour, spill, or store near heat or open flame. Do not allow children in treated areas until surfaces are dry.

HEAVY DUTY BUG KILLER LIQUID KILLS EVEN RESISTANT ROACHES, ANTS — For use indoors or outdoors. Application: Pour into sprayer. Spray infested surfaces only until wet.

ROACHES, ANTS, WATERBUGS, SILVERFISH, SOWBUGS, SPRINGTAILS, SPIDERS, FIREBRATS, CRICKETS, EARWIGS: Spray until wet surfaces behind and beneath cabinets, refrigerators, sink, and persistent trails and other localized areas infested with insects. For treatment around window frames and door frames where ants enter. Repeat as necessary.

CARPET BEETLES: Make localized application to areas of the floor and baseboards. Spray directly into cracks and under carpets where insects may be found. Treat crevices, cracks and infested areas of shelving in closets. Repeat as necessary.

BROWN DOG TICKS AND FLEAS: Spray into the areas around and beneath boards, window and door frames, walls, cracks, crevices, corners of pets and localized areas of floors and carpets. Repeat as necessary. Breed and eggs are resistant to this treatment. Do not treat.

FLIES, MOSQUITOES, WASPS AND FLYING MOTHS — OUTDOORS: For outdoor use only. Spray into the areas around and beneath boards, window and door frames, walls, cracks, crevices, corners of surfaces, and other localized areas where insects enter. Repeat as necessary. Do not treat.

CHIGGERS, ANTS, BROWN DOG TICKS, CLOVER MITES AND FLEAS — OUTDOORS: For the prevention of chiggers, ticks, and fleas on outdoor areas, spray into the areas around and beneath boards, window and door frames, walls, cracks, crevices, corners of surfaces, and other localized areas where insects enter. Repeat as necessary. For ants, wet hills and runways. Repeat as necessary.

Manufacturing Chemists Since 1916
PARSONS CHEMICAL COMPANY, INC.
Grand Lodge, Michigan 48837