

ANTS

Apply on the soil surface and along runways for most varieties of small ants. For carpenter ants and other nest forming ants, locate the nest and dust thoroughly the nest area with Parsons 10% Chlordane Dust. Use 1 lb. per 1,000 Sq. Ft.

EUROPEAN CHAFER LARVAE

Same as Japanese beetle larvae.

JAPANESE BEETLE LARVAE

Apply Chlordane to soil surface and water-in to the upper 2" of soil. Use 1 lb. per 400 sq. ft.

MOLE CRICKETS

Water lawn before application, to make mole crickets move around in soil. Then apply Chlordane to soil surface. Use 1 lb. per 1,500 sq. ft.

SOD WEBWORMS (lawn moth larvae)

Water lawn thoroughly before treatment. Apply Chlordane Dust to soil surface. Do not water again for several days. Use 1 lb. per 870 sq. ft.

WHITE FRINGED BEETLE LARVAE

Apply to surface of soil and water-in thoroughly. Use 1 lb. per 870 sq. ft.

ASIATIC GARDEN BEETLE LARVAE

Apply to surface of soil. Water-in thoroughly. Use 1 lb. per 400 sq. ft.

BOX ELDER BUGS

Dust box elder tree trunks and places where bugs congregate. Also treat breeding and hiding places.

CUTWORMS

Treat lawn surface. Use 1 lb. per 400 sq. ft.

SLUGS

Treat lawn surface. Use 1 lb. per 400 sq. ft.

EARWIGS

Treat lawn surface, trash areas, along foundations and around compost heaps. Use 1 lb. per 400 sq. ft.

MOLES

When you apply Chlordane to your lawn, it kills the insects that serve as the food supply for moles. Without insects to feed on mole damage is minimized. Use 1 lb. Chlordane Dust per 400 sq. ft. of lawn area.

Directions for the soil pests listed on left side of the label would be applicable for lawns and ornamental turf.

NOTICE TO PURCHASER - Follow directions carefully. Timing and method of application, weather and crop conditions, mixtures with other chemicals not specifically recommended, and other influencing factors in the use of this product are beyond the control of Parsons Chemical Works, Inc. or the seller. Buyer assumes all risks of use, storage or handling of this material not in strict accordance with directions given herewith.

Manufacturing Chemists Since 1916

Parsons

CAUTION

Parsons

10% CHLORDANE INSECTICIDE DUST



ACTIVE INGREDIENTS

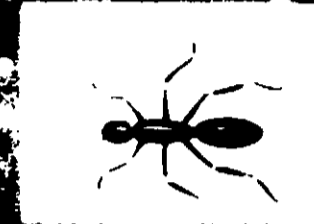
Technical Chlordane

INERT INGREDIENTS

*Equivalent to 10% Chlordane and 90% inert ingredients consisting of various compounds.

PARSONS CHEMICAL WORKS, Inc.

GRAND LEDGE, MICHIGAN - 48837



INSECTS and USES

ANTS

Apply on the soil surface and along runways for most varieties of small ants. For carpenter ants and other nest forming ants, locate the nest and dust thoroughly the nest area with Parsons 10% Chlordane Dust. Use 1 lb. per 1,000 Sq. Ft.

EUROPEAN CHAFER LARVAE

Same as Japanese beetle larvae.

JAPANESE BEETLE LARVAE

Apply Chlordane to soil surface and water-in to the upper 2" of soil. Use 1 lb. per 400 sq. ft.

MOLE CRICKETS

Water lawn before application, to make mole crickets move around in soil. Then apply Chlordane to soil surface. Use 1 lb. per 1,500 sq. ft.

SOD WEBWORMS (lawn moth larvae)

Water lawn thoroughly before treatment. Apply Chlordane Dust to soil surface. Do not water again for several days. Use 1 lb. per 870 sq. ft.

WHITE FRINGED BEETLE LARVAE

Apply to surface of soil and water-in thoroughly. Use 1 lb. per 870 sq. ft.

ASIATIC GARDEN BEETLE LARVAE

Apply to surface of soil. Water-in thoroughly. Use 1 lb. per 400 sq. ft.

BOX ELDER BUGS

Dust box elder tree trunks and places where bugs congregate. Also treat breeding and hiding places.

CUTWORMS

Treat lawn surface. Use 1 lb. per 400 sq. ft.

SLUGS

Treat lawn surface. Use 1 lb. per 400 sq. ft.

EARWIGS

Treat lawn surface, trash areas, along foundations and around compost heaps. Use 1 lb. per 400 sq. ft.

MOLES

When you apply Chlordane to your lawn, it kills the insects that serve as the food supply for moles. Without insects to feed on mole damage is minimized. Use 1 lb. Chlordane Dust per 400 sq. ft. of lawn area.

Directions for the soil pests listed on left side of the label would be applicable for lawns and ornamental Turf.

NOTICE TO PURCHASER - Follow directions carefully. Timing and method of application, weather and crop conditions, mixtures with other chemicals not specifically recommended, and other influencing factors in the use of this product are beyond the control of Parsons Chemical Works, Inc. or the seller. Buyer assumes all risks of use, storage or handling of this material not in strict accordance with directions given herewith.

Manufacturing Chemists Since 1916

Parsons

CAUTION

Parsons

10% CHLORDANE INSECTICIDE DUST



ACTIVE INGREDIENTS:

Technical Chlordane* 10%

INERT INGREDIENTS 90%

*Equivalent to 6% octachloro-4,7-methano-tetrahydroindane and 4% of related compounds.

CAUTION

KEEP OUT OF REACH OF CHILDREN

(See Side Panel for Additional Cautions)

PARSONS CHEMICAL WORKS, Inc.

GRAND LEDGE, MICHIGAN - 48837

