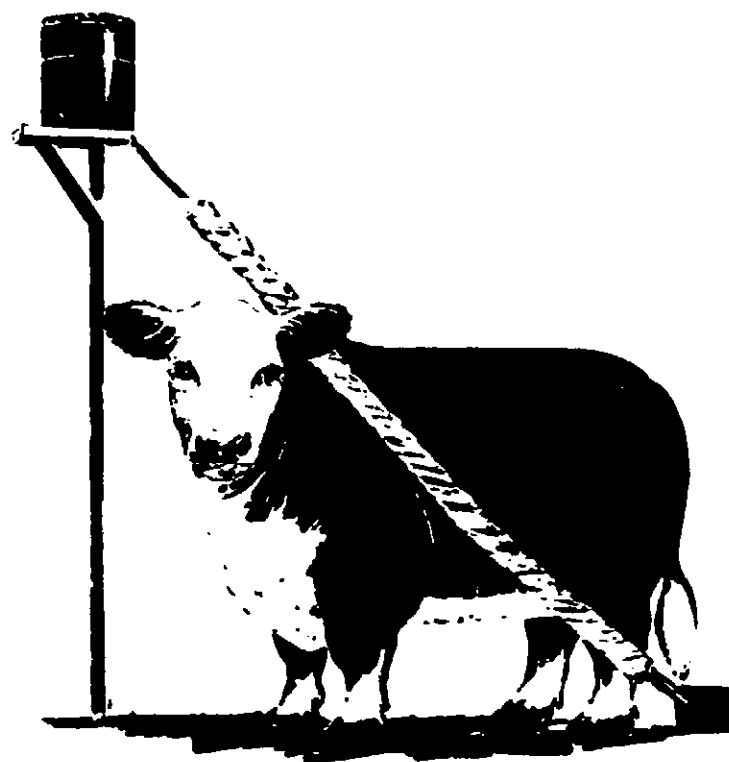


Parsons



KEEP FROM FREEZING

14 point

Parsons LINDANE EMULSIFIABLE CONCENTRATE

MIXES EASILY IN WATER

FOR BEEF CATTLE INSECTICIDE SPRAY

Also FOR BACK RUBBING UNITS

CAUTION — KEEP OUT OF REACH OF CHILDREN SEE OTHER PANELS FOR ADDITIONAL CAUTIONS

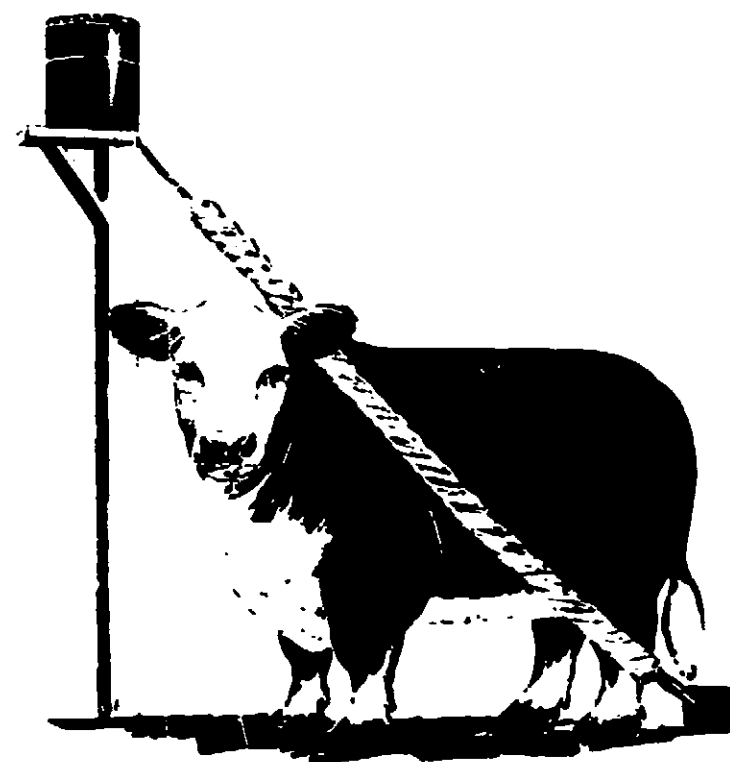
ACTIVE INGREDIENTS: Gamma Isomer of Benzene Hexachloride (from lindane) 20% INERT INGREDIENTS: 80%

Manufacturing Chemists Since 1916

NET CONTENTS 1 QUART

PARSONS CHEMICAL WORKS, Inc. Laboratories - Grand Ledge, Michigan

Parsons



THIS PRODUCT WILL KILL FISH. KEEP OUT OF ANY BODY OF WATER.

NOTICE TO PURCHASER—Parsons Chemical Works, Inc. and Seller make no warranty, expressed or implied, concerning the use of this product other than indicated on the label. Buyer assumes all risk of use and/or handling of this material when such use and/or handling is contrary to label instructions.

USDA REG. NO. 1969-

DIRECTIONS For controlling lice Shake contents vigorously until thoroughly mixed. Inflammable; free-flowing; requires no special preparation; mixes readily with hard or soft water.

One Quart Makes 27 1/2 Gallons of Oil Type Insecticide Treatment for Back Rubbing Units Only.

One Quart Makes 95 Gallons of Water Type Insecticide Treatment for Spraying Beef Cattle.

FOR BACK RUBBING UNITS: Use a 2 1/2% Lindane Oil Solution. Prepare by mixing 1 quart of PARSONS 20% LINDANE EMULSIFIABLE CATTLE SPRAY with 95 gallons of #2 fuel oil. Then treat the burlap wrapped cable with this mixture. One gallon of this mixture will treat 15 to 20 lineal feet of burlap sacks. Re-treat your burlap every 3 to 4 weeks. -B-D

FOR SPRAY: Mix 1 quart PARSONS 20% LINDANE EMULSIFIABLE CATTLE SPRAY in 95 gallons of water applying 2 1/2 gallons of spray per adult animal, using a sprayer giving about 400# pressure. Complete coverage is essential for good control. Keep direct spray out of animals' eyes. -E

—Two applications, a week to 10 days apart, are required.

Repeat as often as necessary

WARNING! HARMFUL VAPOR MAY CAUSE IRRITATION OF SKIN AND EYES

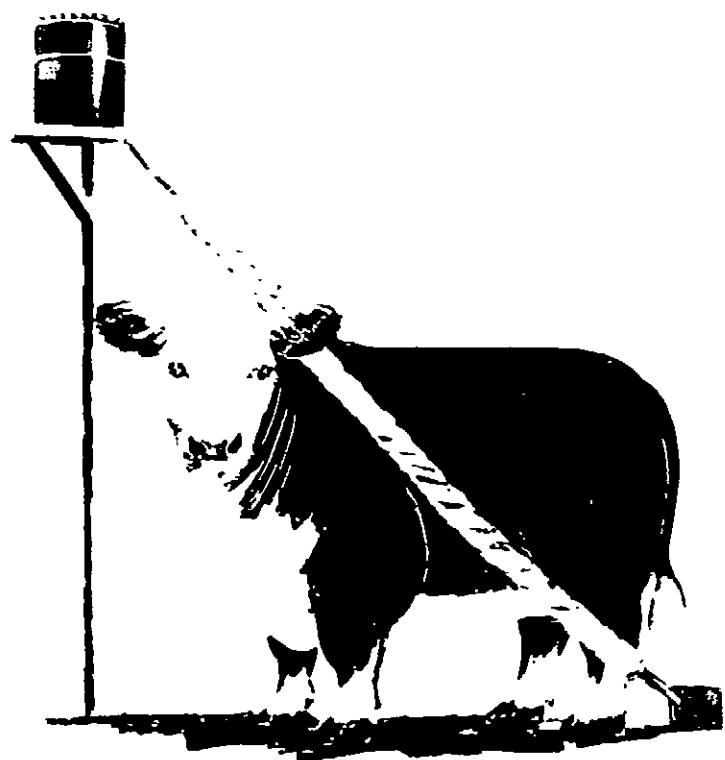
PARSONS CHEMICAL WORKS, Inc. Laboratories - Grand Ledge, Michigan

ACCEPTED WITH COMMENTS

ACCEPTED  
July 3, 1969  
1969-74  
Comments

97 1/2 gallons

*Parsons*



KEEP FROM  
FREEZING

*Parsons*

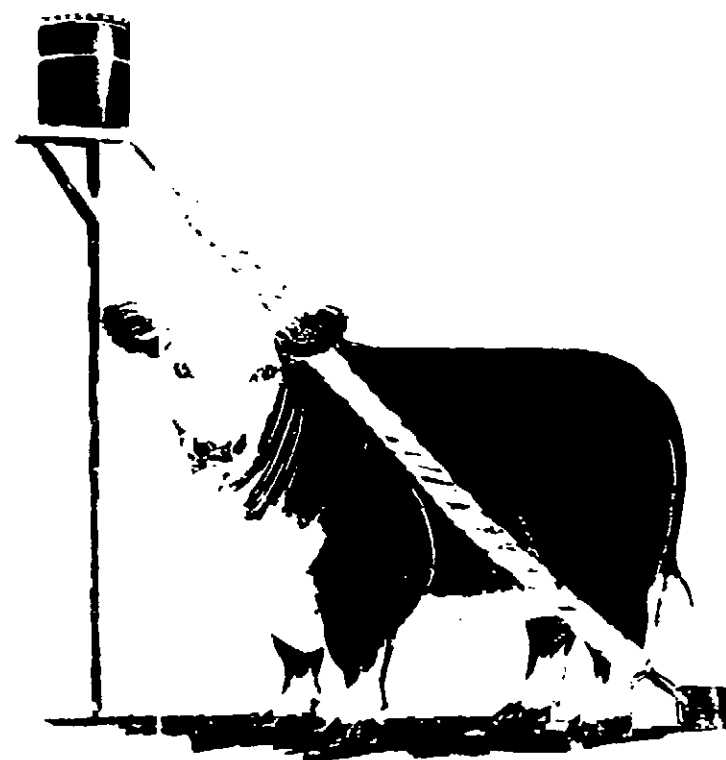
### BEEF CATTLE INSECTICIDE SPRAY

ON OR FOR BACK RUBBING UNITS

CAUTION  
KEEP OUT OF REACH OF CHILDREN

PARSONS CHEMICAL WORKS, Inc.  
*Laboratories Iron Ledge Michigan*

*Parsons*



THIS PRODUCT WILL KILL FISH KEEP OUT  
OF ANY BODY OF WATER

NOTICE TO PURCHASER  
This product is a powerful insecticide and should be used only as directed. It is highly toxic to fish and other aquatic life. Do not use in or near water. Do not use in or near areas where water is used for drinking or irrigation. Do not use in or near areas where water is used for food or feed. Do not use in or near areas where water is used for recreation. Do not use in or near areas where water is used for other purposes. Do not use in or near areas where water is used for any purpose.

USDA REG. NO. 1969

Shake contents vigorously until thoroughly mixed. Inflammable free flowing; requires no special preparation, mixes readily with hard or soft water.

One Quart Makes  $5\frac{1}{2}$  Gallons of Oil Type Insecticide Treatment for Back Rubbing Units Only.

One Quart Makes 95 Gallons of Water Type Insecticide Treatment for Spraying Beef Cattle.

For use on back rubbing units, use a 1% Lindane Oil Solution. Prepare by mixing 1 quart of PARSONS BEEF CATTLE INSECTICIDE SPRAY with 20 quarts of #1 kerosene. Then treat the barrel wrapped cable with this mixture. One gallon of the mixture will treat 15 to 20 feet of cable. Repeat your back rubbing every 4 weeks.

For use on spraying beef cattle, use a 1% Lindane Water Solution. Prepare by mixing 1 quart of PARSONS BEEF CATTLE INSECTICIDE SPRAY with 95 quarts of water. Spray the cattle with this mixture. One gallon of the mixture will treat 15 to 20 head of cattle. Repeat your spraying every 4 weeks.

WARNING: HARMFUL TO FISH AND OTHER AQUATIC LIFE. DO NOT USE IN OR NEAR WATER.

WARNING: HARMFUL TO FISH AND OTHER AQUATIC LIFE. DO NOT USE IN OR NEAR WATER.

**PARSONS CHEMICAL WORKS, Inc.**  
*Laboratories Iron Ledge Michigan*

**A. Harmful if swallowed or absorbed through skin.**

**Avoid inhaling vapor or mist from sprays. Avoid contact with skin or eyes. In case of skin contact, wash with plenty of soap and water. For eyes, flush with plenty of water and get prompt medical attention.**

**Avoid contamination of foodstuffs or food containers.**

**DO NOT USE IN DWELLINGS OR FOR HOUSEHOLD PURPOSES.**

**DO NOT SPRAY FEED, FORAGE, DRINKING AND FEEDING TROUGHS.**

**B. do not make back rubber accessible to cattle within 30 days of slaughter.**

**C. Do not use on Dairy Cattle or in barns or poultry houses.**

**D. Animals under 6 months of age should not be allowed access to the back rubber treatment.**

**E. Limit spray applications to a 0.03% Lindane to young animals over 3 months of age. Caution: Do not treat animals in cold, stormy weather and to avoid treating overheated or sick animals. Mix 1 qt. to 182 gallons of water.**