

[1969-73]

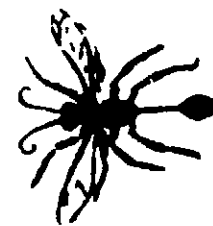
Parsons



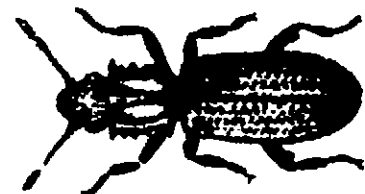
SPIDERS



CONFUSED FLOUR BEETLE



WASPS



SAW-TOOTHED GRAIN BEETLE



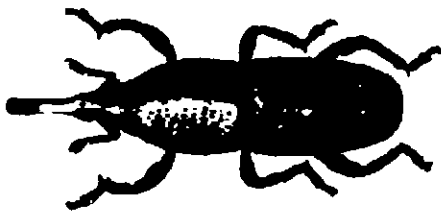
CRICKETS



MEDITERRANEAN FLOUR MOTH AND LARVA



MOSQUITOES



GRAIN WEEVIL

UNDER THE FEDERAL INSECTICIDE FUNGICIDE AND RODENTICIDE ACT FOR ECOLOGICAL PESTICIDE REGISTERED UNDER NO. 1969-73

Aug. 12, 1968

ACCEPTED



INSECT PESTS



- INSTITUTIONS
- INDUSTRIES

- ELEVATORS
- STORES

- MILLS
- HOMES

FOR USE IN FOGGERS HAND ELECTRIC OR POWER SPRAYERS ATOMIZERS AND STEAM DIFFUSORS.

Not to Be Used in Thermo Units Such As B.V.I.s or for Outside Use

CAUTION KEEP OUT OF REACH OF CHILDREN

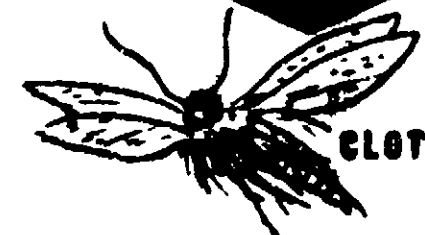
Active Ingredients: 1%

USE A RECOMMENDED BRAND

Manufacturers Chemists Since 1911

PARSONS CHEMICAL WORKS, Inc.
Laboratories Grand Lodge Michigan

Parsons



CLOTHES MOTHS



FLEAS



SILVERFISH

NOTICE TO PURCHASER—Parsons Chemical Works, Inc. and Seller's recommendations for use of this product are based on tests believed to be reliable. The use of this product being beyond our control, no guarantee, expressed or implied, is made as to the effects of such or the results to be obtained if not used in accordance with directions or established safe practice. The buyer must assume all responsibility, including injury or damage, resulting from its mis-use as such, or in combination with other materials.

NET CONTENTS



GALLON

Parsons

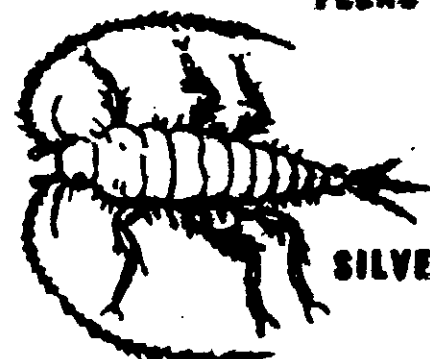
Parsons



CLOTHES MOTHS



FLEAS



SILVERFISH

NOTICE TO PURCHASER—Parsons Chemical Works, Inc. and Seller's recommendations for use of this product are based on tests believed to be reliable. The use of this product being beyond our control, no guarantee, expressed or implied, is made as to the effects of such or the results to be obtained if not used in accordance with directions or established safe practice. The buyer must assume all responsibility, including injury or damage, resulting from its mis-use as such, or in combination with other materials.

DIRECTIONS

Use as it comes from this container—do not dilute with anything else.

INSECTS (X) — Group 1

(Faint, mostly illegible text listing insect species)

PLACES USED—Institutional—Industrial—Household—such as: food processing plants, bottling plants, breweries, canneries, packing houses, bakeries, restaurants, stores, food handling establishments, hotels, theaters.

HOW TO USE—A contact insecticide. Kills flying and crawling insect pests listed above (X). Observe label cautions. Close all room openings such as doors and windows to eliminate drafts. Then fog or spray heavily entire inside area, hitting as many insects as possible. Also be sure to force fog or spray into cracks, crevices and runways where insects frequent. After spraying or fogging operation immediately leave area treated and leave all openings closed for 15 to 30 minutes before airing out. **For Controlling Moths:** Spray thoroughly all articles to be protected, paying particular attention to seams and folds. Spray interior surfaces of storage containers, such as closets and trunks, paying special attention to spraying cracks and corners. Spray thoroughly every month unless the treated articles are stored in a moth-tight container.

For use in Food Processing Plants: Foods should be removed or covered during treatment or thoroughly cleaned before using. For a space spray in these areas, apply only when plant is not in operation. **For Flea Control:** Spray thoroughly sleeping quarters of animals. Repeat this treatment as often as necessary.

INHIBITS INFESTATION OF—Bees, Wasps, Hornets, Yellow Jackets. Spray thoroughly all nests and places where insects abide, hitting as many as possible. If it is more difficult to control bees that enter a structure through a small hole. Therefore, it is advisable that some of the side boards or other obstruction be removed so that spray can penetrate the nest and hit the insects. Re-treat as necessary.

INSECTS (XX) — Group 2

(Faint, mostly illegible text listing insect species)

PLACES USED—Elevator, mills, granaries, grain silos, seed warehouses, ships' holds, box cars (metal and wood).

HOW TO USE—A contact insecticide. Kills by direct contact exposed stages of insects listed (XX). Spray thoroughly all surfaces infested paying special attention to cracks and crevices, hitting as many insects as possible. Also ideal for spraying empty grain bins for visible surface grain weevil. Do not apply directly to grain. Follow procedure approved by Federal Grain Sanitation Program. Repeat this treatment as often as necessary.

CAUTION—Do not spray or fog, store or otherwise expose material to an open flame or hot surfaces. Cover plants, fish water, and food before spraying or fogging. Also, remove birds and pets from the area being treated.

WARNING—Harmful if swallowed. Do not breathe spray mist. Keep away from eyes. Follow manufacturers instructions for proper use of applying equipment. Be sure and point sprayer nozzle away from eyes and body during spraying application.

NET CONTENTS GALLON

PARSONS CHEMICAL WORKS, Inc

Liquidators Grain Loan Michigan

Parsons



CONFUSED
FLOUR BEETLE



RED-TOOTHED
FLOUR BEETLE



MEDITERRANEAN
FLOUR MOTH
LARVA



GRAIN WEEVIL



INSECT

PESTS



In

- INSTITUTIONS
- INDUSTRIES

- ELEVATORS
- STORES

- MILLS
- HOMES

FOR USE IN — FOGGERS, HAND, ELECTRIC OR POWER
SPRAYERS, ATOMIZERS AND STEAM DIFFUSORS —

(Not to Be Used in Thermo Units Such As (BVI's) or for Outside Use)

CAUTION KEEP OUT OF REACH OF CHILDREN

SEE OTHER PANELS FOR ADDITIONAL CAUTIONS

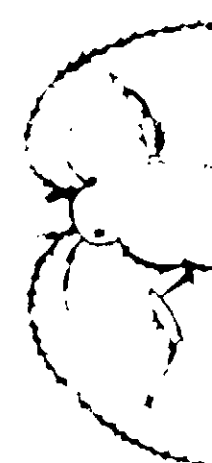
Active Ingredients 100%

Deodorized Base Oil	98.35%
*Technical Piperonyl Butoxide	1.50%
Pyrethrins15%

*Equivalent to 1.20% of (butylcarbityl) (6-propylpiperonyl) ether, and to .30% of related compounds.

USDA REG. NO. 1969

Manufacturing Chemists Since 1916



NOTICE TO PU
and (see
not are t
the use of th
guarantee
the effects
not used i
should sat
responsib
coming from
the with of