

CONCENTRATED NON SELECTIVE WEED KILLER

Equivalent to 6 pounds Arsenic Trioxide (As₂O₃) per gal.

ACTIVE INGREDIENTS:

Sodium Arsenite* NaAsO₂ 55.8%
INERT INGREDIENTS 44.2%

* Total Arsenic, expressed as metallic, all in water-soluble form 32.2%

NOTE: Solidifies at low temperatures. To get solids back into solution, place in warm room.

GENERAL WEED CONTROL

For use on bare ground or small enclosed industrial areas, such as tank farms and substations. Also for use on roads, dikes and drawways to be covered by pavement after treatment. Do not contaminate water used for irrigation or domestic purposes.

TIMING: For best results, apply when weeds are less than 6 inches high.

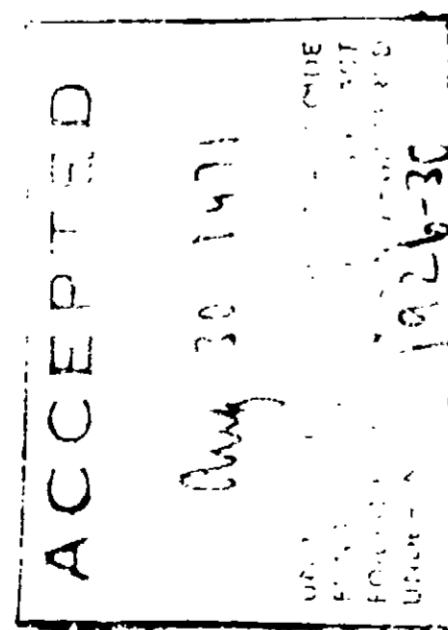
PERENNIAL WEED AND GRASS CONTROL: For use in sprayer, mix 1 part with 5 parts water. For sprinkling can application, mix 1 part with 20 parts water. Thoroughly wet foliage, stems and exposed root crowns with spray mixture. Do not exceed more than 5 pounds of Arsenic Trioxide per acre.

ANNUAL WEED AND GRASS CONTROL: For use in sprayer, mix 1 part with 10 parts water. For sprinkling can application, mix 1 part with 40 parts water. Thoroughly wet foliage, stems and exposed root crowns with spray mixture. Do not exceed more than 50 pounds of Arsenic Trioxide per acre.

PLANT GROWTH PREVENTION: Apply 2 to 3 quart., mixed with 5 or more gallons of water per 100 square feet. Use higher rate for heavy soils or where ground is not bare of vegetation. Treated soil should not be cultivated or disturbed after treatment. Treatment usually retards all plant growth for an extended period, depending upon rate of reaching from soil root zone. This higher rate of application is only to be applied to areas intended to be covered by pavement after treatment.

TREE AND STUMP KILLING: Mix 1 part with 3 parts water For Tree Killing, Cut deep gashes into bark and wood of tree, around tree trunk, two or three inches apart. Fill each gash with this mixture. For best results, make treatment during spring or early summer . . . For Stump Treatment, Soak freshly cut surfaces with this mixture to prevent sprouting.

Tested and approved by Sanitation Assoc. Testing Laboratory and approved Class A.



USDA Reg. No. 1926-30

WK-90

Concentrated Non Selective Weed Killer



navy brand
MANUFACTURING CO.

Net Contents: 1 U.S. Gallons



DANGER: POISON
KEEP OUT OF REACH OF CHILDREN
POISONOUS IF SWALLOWED!

Do not get in eyes, on skin or clothing . . . Do not breathe spray mist. Wear respirator . . . In case of contact, wash thoroughly . . . Keep away from feed and food products and out of reach of children and domestic animals . . . Keep livestock and domestic animals off treated areas . . . Do not use treated vegetation as food or bedding for livestock . . . Do not allow spray or spray drift to contact desirable plants.

KEEP OUT OF REACH OF CHILDREN.

FIRST AID: If swallowed, give a tablespoon of salt in a glass of warm water and repeat until vomit fluid is clear. Then give 2 tablespoonfuls of Epsom Salts or Milk of Magnesia in water, and plenty of milk or water. Have patient lie down and keep quiet. **CALL A PHYSICIAN IMMEDIATELY.**

Do not use or store around the home. Do not reuse container. Destroy when empty.

DO NOT USE THIS PRODUCT ON AREAS UNDER-PAVED WITH ROOTS OF DESIRABLE TREES, SHRUBS OR PLANTS

This product is toxic to wildlife. Birds and other wildlife in treated areas may be killed. Do not apply where runoff is likely to occur. Do not contaminate water by cleaning of equipment, or disposal of wastes.

NOTICE: Seller makes no warranty, expressed or implied, concerning the use of this product other than indicated on the label. Buyer assumes all risk of use and/or handling of this material when such use and/or handling is contrary to label instructions.