

AMAZON[®]

46% Chlordane Concentrate

WATER-EMULSIFIABLE

4 FULL POUNDS OF CHLORDANE
PER GALLON

ACTIVE INGREDIENTS

*Technical Chlordane	46%
Petroleum Distillate	48%

INERT INGREDIENTS

(Emulsifiers)	6%
---------------	----

CAUTION: COMBUSTIBLE MIXTURE.
DO NOT SPRAY NEAR OR TOWARD AN OPEN
FLAME AS IS OR WHEN DILUTED WITH OIL.

N.Y.F.D. PERMIT NO. Y656248

* EQUIVALENT TO 27.6% Octachloro-4,
7-Methanotetrahydroindane
and 18.4% related compounds

CAUTION: KEEP OUT OF REACH OF CHILDREN
HARMFUL IF SWALLOWED.

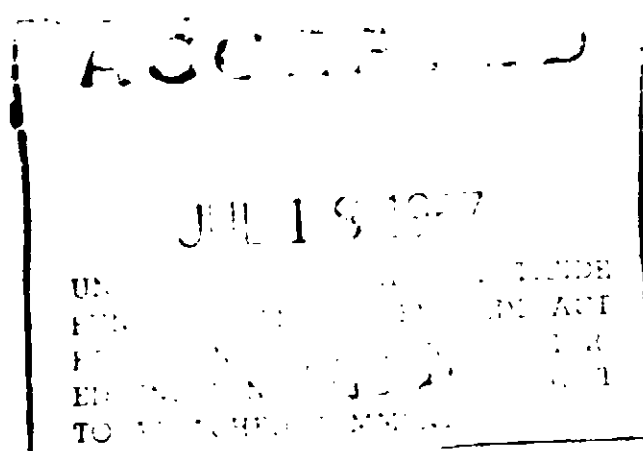
DO NOT USE ON FEED OR FOOD CROPS.
DO NOT USE IN POULTRY HOUSES, DAIRY BARN OR GRAIN AND
BULK FOOD STORAGE BINS.

CONTENTS: 1 GALLON

U.S.D.A. = 1783 - 28

TRIO CHEMICAL WORKS, INC.

Brooklyn 6, N. Y.



CAUTION: READ INSTRUCTIONS BEFORE USING.

ONLY TRAINED PERSONNEL SHOULD APPLY THIS SPRAY.
TOXIC WHEN TAKEN INTERNALLY OR SPILLED ON SKIN. IN CASE OF
SPILLAGE ON SKIN, WASH IMMEDIATELY WITH SOAP AND WATER.
AVOID EXPOSURE TO SPRAYS OR MIST.

THIS MATERIAL SHOULD NOT BE APPLIED FOR COMPLETE COVERAGE
OF WALLS AND CEILINGS OF LIVING QUARTERS, MESS HALLS, ETC. RE-
STRICT ITS USE TO LOCALIZED TREATMENT OF HIDING PLACES AND
RUNWAYS OF INSECTS TO BE CONTROLLED. DO NOT USE IN PLACES
WHERE FOOD IS HANDLED OR STORED.

MIXING INSTRUCTIONS

THIS CONCENTRATE WILL NOT FORM EMULSIONS THAT ARE INDEFIN-
ITELY STABLE. TO INSURE GOOD PERFORMANCE:

1. PREPARE THE EMULSION AS SOON BEFORE ACTUAL USE AS POSSIBLE.
2. POUR THE PROPER AMOUNT OF CONCENTRATE SLOWLY INTO THE
REQUIRED VOLUME OF WATER WITH CONSTANT STIRRING AND CON-
TINUE AGITATION FOR 3 MINUTES AFTER THE ADDITION OF THE
PRODUCT.

(SEE FOLLOWING "DIRECTIONS FOR USE" FOR DILUTIONS RECOM-
MENDED FOR CONTROL OF VARIOUS PESTS.)

3. VIGOROUSLY REAGITATE IMMEDIATELY BEFORE USE.

DIRECTIONS FOR USE —

MOSQUITOES, FLIES AND SAND FLIES

ADD 1 PART OF CONCENTRATE TO 23 PARTS OF WATER (5½ OUNCES PER GALLON
OF WATER) AS ABOVE AND APPLY TO WALLS OF BUILDINGS, OTHER THAN LIVING
QUARTERS, MESS HALLS, ETC., THOROUGHLY WETTING THESE SURFACES. ONE
GALLON WILL COVER 750 SQUARE FEET, APPROXIMATELY. IN LIVING QUARTERS,
ETC., USE OTHER APPROVED INSECTICIDES FOR TREATMENTS REQUIRING COM-
PLETE WALL COVERAGE.

OUTDOOR SPRAY

MOQUITOES, FLIES AND SAND FLIES

FOR CONTROL OF THESE INSECTS ADD 1 PART OF CONCENTRATE TO 47 PARTS OF
WATER (2½ OUNCES PER GALLON OF WATER) AND STIR THOROUGHLY. APPLY
LIGHTLY TO VEGETATION, TREE TRUNKS, ETC., AT THE RATE OF 5 TO 10 GALLONS
PER ACRE DEPENDING ON THE AMOUNT OF VEGETATION AND TYPE TERRAIN
TO BE TREATED.

MITES (CHIGGERS), TICKS, AND ANTS

ADD 1 PART OF CONCENTRATE TO 47 PARTS OF WATER AS ABOVE. FOR MITE AND
TICK CONTROL APPLY TO LOW VEGETATION AT THE RATE OF 10 TO 20 GALLONS
PER ACRE, DEPENDING ON AMOUNT OF VEGETATION.

FOR THE CONTROL OF ANTS APPLY AT THE RATE OF 20 GALLONS PER ACRE.

REMARKS

1. OPERATORS SHOULD BE PROVIDED WITH RESPIRATORS OF A TYPE APPROVED
BY U. S. BUREAU OF MINES FOR USE AROUND ORGANIC VAPORS. (THE MINE SAFE-
TY APPLIANCES COMPANY CHEMICAL CARTRIDGE RESPIRATOR CATALOG NO.
ED43798 IS SUITABLE FOR THIS PURPOSE.)

2. CARE OF EQUIPMENT. — AFTER USE, ALL EQUIPMENT SHOULD BE CAREFULLY
RINSED WITH WATER, DRIED, TREATED WITH AN ANTIRUST AGENT AND STORED
SO AS TO PREVENT CORROSION.

Dispose of wastes by burying in non-crop lands away from
water supply. Containers should be disposed by punching
holes in them and burying with wastes, or by burning.
(KEEP OUT OF SMOKE)

THIS PRODUCT IS TOXIC TO FISH AND WILDLIFE.

KEEP OUT OF LAKES, STREAMS, AND PONDS.

APPLY THIS PRODUCT ONLY AS SPECIFIED ON THIS LABEL.