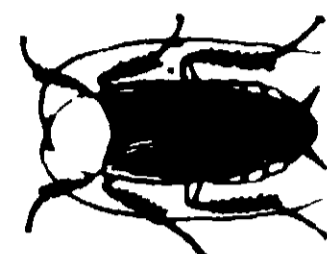


# Grant's



## ROACH TRAP KILLS WITH KEPONE\*

**KILLS ROACHES IN HOMES,  
APARTMENTS, STORES, RESTAURANTS  
AND WAREHOUSES**

Convenient, easy to use control without expensive fumigating. Works when roaches come from their hiding places to feed at night. They enter trap, return to their hiding places, and die.

### TO USE

**PUNCH IN ALL SIDE HOLES.** Place traps where roaches are numerous — in closets, under sinks, behind refrigerator, near baseboards and in other areas where roaches may hide. Replace traps as necessary.

### WARNING

Contents hazardous if swallowed or absorbed through the skin. Do not get on skin, in eyes, or on clothing. Wash with soap and water after using. Do not contaminate feed or foodstuffs. Place traps in areas inaccessible to children and pets. Keep out of reach of children and domestic animals. Destroy container when empty.

**ACTIVE INGREDIENT:**  
Decachlorooctahydro 1, 3, 4 metheno 2H cyclobuta  
(cd) pentalen:2 one 0.125%  
**INERT INGREDIENTS** 99.875%  
Total 100.00%

\*KEPONE is a Reg. T.M. of Allied Chemical Corporation.

U.S. Pat. Release 24,748

**MFG. FOR GRANT LABORATORIES**  
DIVISION OF LEIBURE ENTERPRISES, INC.  
OAKLAND, CA 94608

EPA REG. NO. 1083-22—EPA EST. 1083-0A-1

# Grant's ROACH TRAP

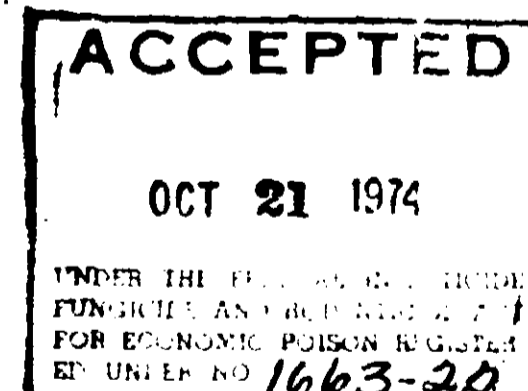
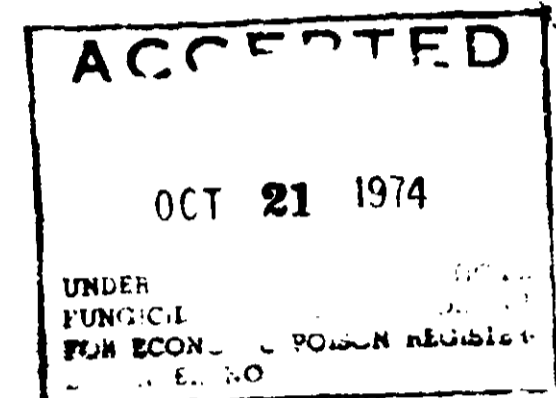
**KILLS  
WITH  
KEPONE\***



**KILLS  
ROACHES  
EFFECTIVELY**



**IN  
HOMES,  
APARTMENTS,  
STORES,  
RESTAURANTS,  
WAREHOUSES**



**WARNING: KEEP OUT OF REACH OF CHILDREN**