

[1645-54]

CONTENTS POUNDS

U.S.P.A. Reg. No. 1645-54



PROFESSIONAL

# F.O.D.

## FUME-O-DEATH

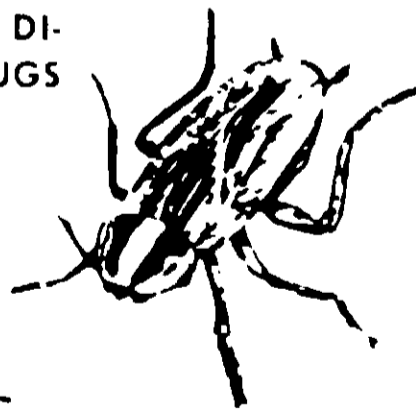
### POWDER INSECTICIDE



ANT

EXTRA POWERFUL —  
KILLS ROACHES, ANTS,  
SILVERFISH. CON-  
TROLS LICE, FLEAS  
AND TICKS ON PETS.

WHEN USED AS DI-  
RECTED KILLS BUGS  
ON CONTACT.



ROACHES

**CAUTION:**

KEEP OUT OF REACH OF CHILDREN  
See Left Panel for Additional Cautions

### DIRECTIONS:

Squeeze container gently and dispense Fume-O-Death Powder evenly into cracks, crevices, et cetera. Approximately two ounces of Fume-O-Death Powder used per 100 square feet will control roaches, silverfish, ants. Dust around and behind, molding, shelving, baseboards, pipe openings, and other areas where insects may hide. For ants, the treatment of ant trails, and areas where these pests enter the premises, such as window-sills and door frames should be included. For bad infestations, apply Fume-O-Death Powder behind cabinets and walls, in crawl spaces and attics at the rate of sixteen ounces per 1,000 square feet of surface area. Distribute powder beneath and behind stoves, refrigerators and appliances. Repeat treatments as often as necessary. For pets (cats and dogs) contact ticks directly with powder. For fleas and lice apply powder liberally to the animal. Work in powder by rubbing until it touches the animal's skin. Repeat as necessary.

### CAUTION:

Avoid prolonged inhalation of powder. Avoid contamination of feed and food stuffs. Keep out of reach of children.

Fume-O-Death Insecticide. This extremely effective insect powder flushes out and kills insects rapidly. It is odorless and non-staining. It may be used in homes, restaurants, factories, hotels, motels, and warehouses.

Active Ingredients	100%
Pyrethrins	1.00%
*Technical Piperonyl Butoxide*	10.00%
Silicon Dioxide	40.00%
Petroleum Hydrocarbons	49.00%

\*Equivalent to 8.00% of dibutylarbityl, isopropyl piperonyl ether and to 2.00% of related compounds.

**KNOX CHEMICAL CO.**

Chicago, Illinois 60611

ACCEPTED  
Apr 25, 1967  
1645-54