

[1645-10]-2 pages

CONTENTS

GALLONS

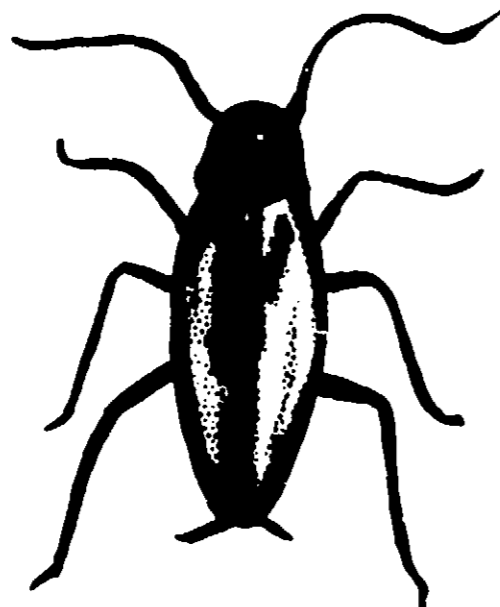
U S D A. Reg No 1645 10
FOR INDUSTRIAL USE ONLY

KNOX PYRENONE* B

Industrial and Mill Spray Concentrate



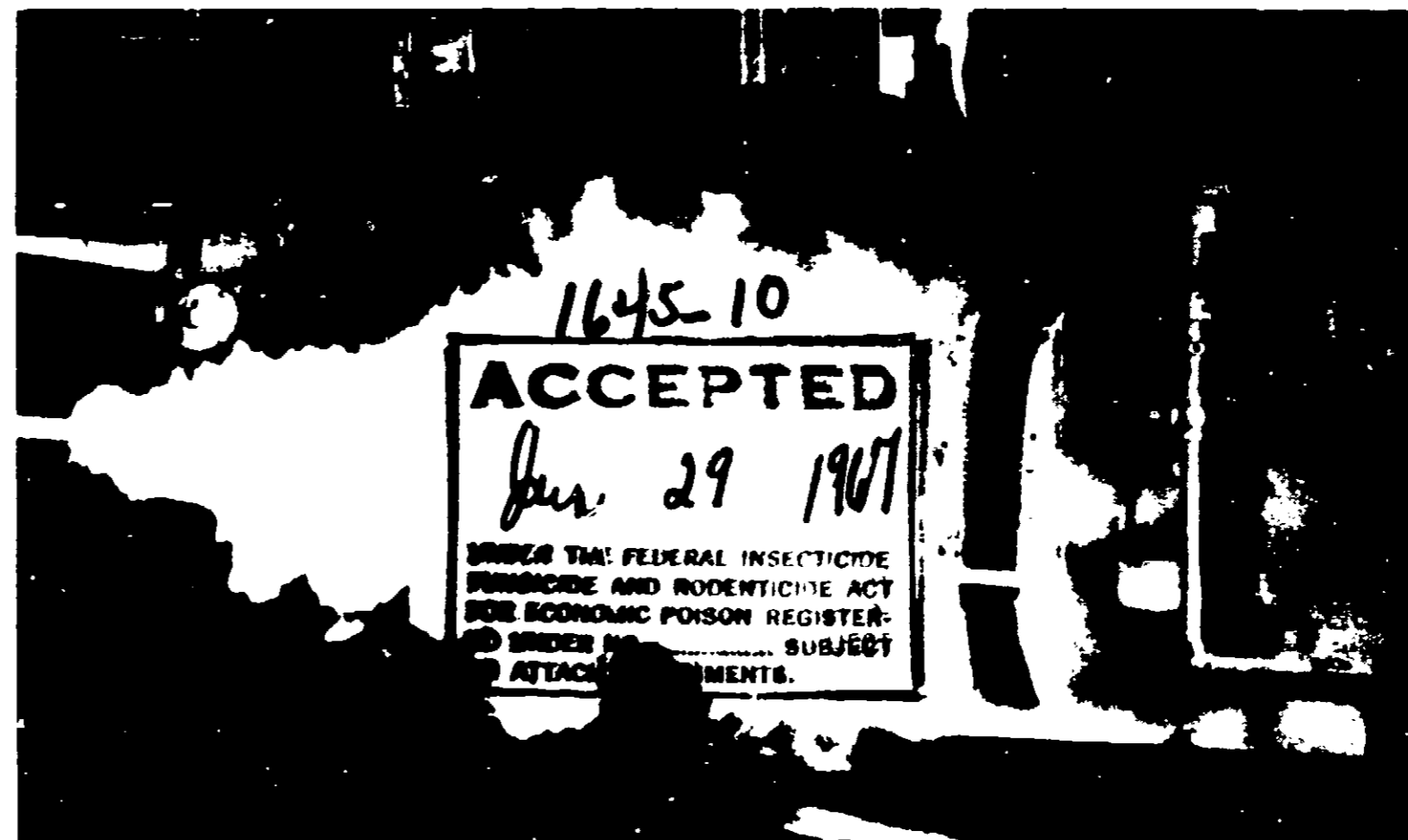
AMERICAN ROACH



GERMAN ROACH



WEBBING CLOTHES
MOTH AND LARVA



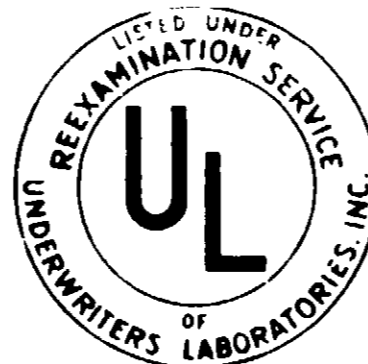
SUPER KILL POWER

Active Ingredient 100%
Petroleum Oil 98.17%
Fatty Acid Soap and Emulsifier 1.53%
Ethers 0.23%

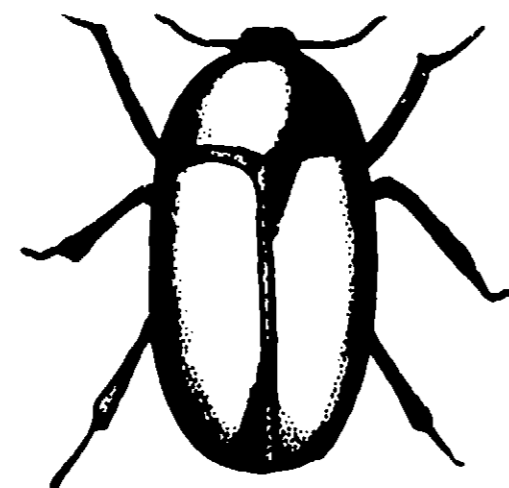
Equivalent to 1.20% of active ingredient
Equivalent to 1.20% of active ingredient
of related compound

This insecticide is a non-flammable material and may be sprayed, stored or otherwise exposed to an open flame.

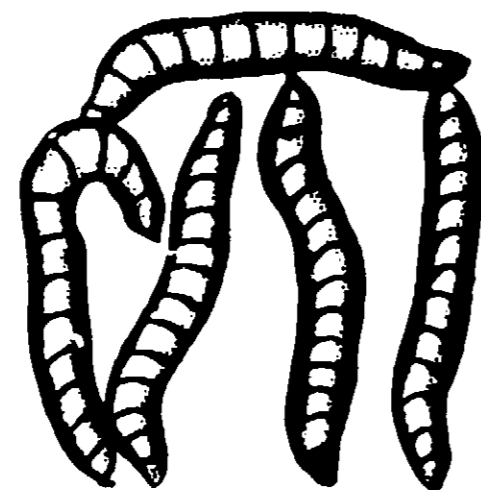
Manufactured by
KNOX CHEMICAL CO.
CHICAGO, ILL. 60611



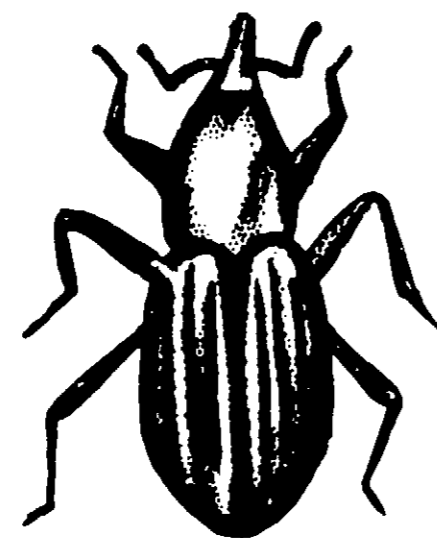
[1145-10]



BLACK BUFFALO
MOTH BEETLE



YELLOW MEAL
MOTH WORMS



GRAIN WEEVIL

KNOX PYRENONE* B

Industrial and Mill Spray Concentrate

Knox Pyrenone* B is a concentrated insecticide containing two of the finest killing ingredients known, namely, Pyrethrum and Piperonyl Butoxide. Independent laboratories report Pyrethrins and Piperonyl Butoxide among the finest of insecticides.

When used in Dyna Fog or similar equipment, be sure to spot treat as well as general fogging to obtain maximum results, using one gallon for 50,000 cubic feet for the kill and control of roaches and certain other crawling insects, and one gallon for 100,000 cubic feet for the kill and control of flies and certain other flying insects.

The dosage recommended below is suggested as most appropriate for control of the exposed stages of insects in stored grain and food products, industrial institutional and household pests in ships' holds, box cars, mills, elevators, granaries, bottling plants, breweries, food processing plants, food handling establishments, canneries, packing houses, bakeries, markets, restaurants, stores, hotels, theaters, and similar situations.

In proper, specialized application Knox Pyrenone* B kills the accessible, exposed stages of flies, mosquitoes, silverfish, gnats, crickets, roaches, spiders, wasps, hornets, flying moths, clover mites, cheese mites, cheese skipper, and most common stored grain pests including granary weevil, rice weevil, confused flour beetle, rust red flour beetle, cadelle, saw toothed grain beetle, spider beetles, angoumois grain moth, Mediterranean flour moth, meal worms, cigarette beetle, drug store beetle, and grain mites. For crawling insects such as roaches, silverfish, granary weevil, rice weevil, confused flour beetle, rust red flour beetle, cadelle, saw toothed grain beetle, spider beetles, angoumois grain moth, Mediterranean flour moth, meal worms, cigarette beetle, drug store beetle, and grain mites, we recommend that the spray be directed into cracks and crevices and other hiding places. Direct contact with the insect produces the best killing results. Repeat treatments at intervals as needed, using one gallon per 100,000-150,000 cubic feet of space.

For the kill and control of clothes moths and carpet beetles, black buffalo moth beetle, spray article to be protected thoroughly, paying particular attention to seams and folds, and also thorough spraying of the inside of closets and other storage containers. Applications should be repeated at 30 day intervals, unless articles are stored in moth tight containers. Carpets and baseboards should also be sprayed thoroughly and repeatedly for carpet beetle control.

For the kill and control of flying insects such as flies, mosquitoes, and flying moths, direct your spraying application toward the ceiling of the room, or rooms, being sure that the room or rooms are closed for 10 to 15 minutes after application. It is often advisable to sweep up and destroy the fallen insects.

CAUTION HARMFUL IF SWALLOWED

The fog or spray should be used in food processing plants when they are in operation. Foods should be removed or covered during treatment and food processing surfaces should be covered or thoroughly cleaned before using.

Manufactured by

KNOX CHEMICAL CO.

100 EAST KINZIE ST.

CHICAGO, ILL. 60611

Jan 27 1961 1645-10