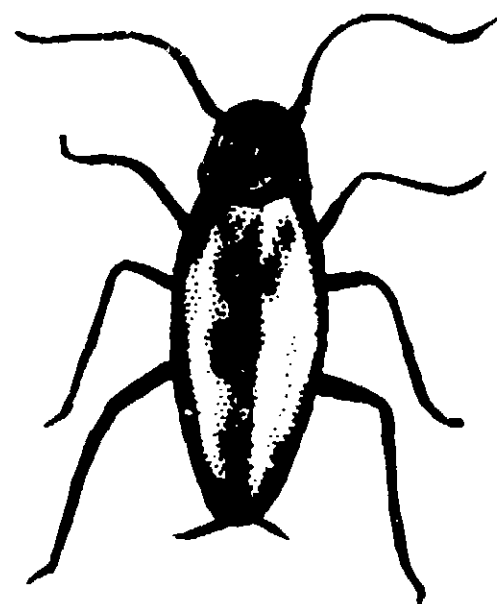


[1645-4]



AMERICAN ROACH



GERMAN ROACH



WEBBING CLOTHES
MOTH AND LARVA

DIRECTIONS

ACTIVE INGREDIENTS 100%

FUME-O-DEATH kills and helps control such disease and filth carrying insects on your premises as flies, roaches and mosquitoes. Because of its highly concentrate of toxic ingredients to crawling insects they are paralyzed and death follows in a matter of minutes.

FUME-O-DEATH is easy to use, non-staining and has fast killing action.

FUME-O-DEATH is compounded from a synthetic toxicant blended with pyrethrins to produce a finished product with maximum knock down and killing powers. It is adaptable for use in either steam or electric sprayers and because of its high concentration is especially suited for steam sprayers where a certain amount of dilution takes place during operation. Use one gallon for 15,000 cubic feet of space.

FUME-O-DEATH contains no kerosene but instead a highly refined mineral oil base is used so as to eliminate staining, spotting or greasy residue after spraying. Because of the carefully chosen base oils and toxic ingredients, it remains suspended in the air for a long period of time, making certain that insects on the ceiling or upper walls are killed.

Warehouses—All places storing food of any type should make a practice of spraying the premises with FUME-O-DEATH periodically in order to prevent roach infestation. Spray shelves and storage areas to kill the exposed stages of yellow meal moth worms and grain weevil. This is truly a place where the old adage "an ounce of prevention is worth a pound of cure" holds true.

Because of its high concentration this product is especially suited for use in steam type vaporizing sprayers.

FUME-O-DEATH has no objectionable odor and will not stain or contaminate foods when used properly. When sprayed it forms a smoke-like fog which remains suspended in the air for a great length of time, penetrating all cracks and crevices and driving the insects out or killing them in their hiding places.

Simply load the sprayer with this con-

centrate and spray directly into insect hiding places.

TO KILL MOTHS. Thoroughly brush and clean the articles to be protected and follow with a thorough spraying.

TO KILL ROACHES OR WATER BUGS: Spray ~~well~~ ^{once} each day for eight or ten days, in cracks, crevices and all places where roaches are found. It will usually control effectively such pests as roaches and flies on premises when used as directed. Spray liberally with force cracks, crevices, cabinets, around pantry shelves, in mouldings and wood work, openings in walls and floors, or wherever these insects are likely to hide. Repeat treatment as often as necessary.

TO KILL BED BUGS: Spray mattress, bedstead, corners, etc., wherever insects might be as well as their holes or cracks in walls of the room.

For the kill and control of clothes moths and carpet beetles (black buffalo moth beetle), spray article to be protected thoroughly, paying particular attention to seams and folds, and also thorough spraying of the inside of closets and other storage containers. Applications should be repeated at 30 day intervals, unless articles are stored in moth tight containers. Carpets and baseboards should also be sprayed thoroughly and repeatedly for carpet beetle control.

For the kill and control of flying insects, such as flies, mosquitoes and flying moths, direct your spraying application toward the ceiling of the room or rooms, being sure that the room or rooms, are closed for 10 to 15 minutes after application. It is often advisable to sweep up and destroy the fallen insects.

CAUTION

CAUTION: The fog or spray should be used in food processing plants when they are not in operation. Foods should be removed or covered during treatment and food processing surfaces should be covered or thoroughly cleaned before using. Remove pets, birds and fish bowls from the room before spraying.

KNOX CHEMICAL CO.

18 EAST KINZIE ST., CHICAGO, ILL. 60611

ACCEPTED