

DIRECTIONS

Stir well before using. Do not thin. Apply with stiff paint brush. Uniformly cover cut surface including the exposed cambium and about one inch of the bark around the cut surface.

Store about 40° F. Close container after use.

INSTRUCTIONS

Asphalt has long been used as an effective dressing on cut surfaces in tree trimming practices. MAINTAIN[®] A combines a growth inhibitor, Chlorflurenol, with an asphalt emulsion and inhibits sprouts from the cut cambium layer of the exposed area and also inhibits adventitious buds from developing near the treated cut.

MAINTAIN[®] A has effectively retarded sprouting and/or epicormic branching in the following species:

American elm	Ulmus americana
Bigtoothed aspen	Populus grandidentata
Black locust	Robinia pseudacacia
Black walnut	Juglans nigra
Box elder	Acer negundo
Decorative olive	Oleaceae spp.
Golden willow	Salix lasiandra
Hickory	Carya spp.
Live oak	Quercus virginiana
Post oak	Quercus stellata
Red oak	Quercus rubra
Salt cedar	Tamarix gallica
Silver maple	Acer saccharinum
Sycamore	Platanus spp.
Water oak	Quercus nigra
Wild cherry	Prunus emarginata
Yellow poplar	Liriodendron tulipifera

IMPORTANT

Care should be taken to confine the use or application to the particular area intended to be treated. Keep livestock off treated area. Do not feed treated vegetation to livestock.

NOTICE

Because of many varying conditions affecting use and application, such as location, seasonal weather, soil composition and type of vegetation, manufacturer warns buyer that these and other conditions may impair or vary the results or effects of the use of this product. In any event, complete elimination of weeds is not guaranteed. It is advisable to consult your State Extension Service or Agricultural Experiment Station weed specialists on specific problems. Neither manufacturer nor seller shall be liable in respect to any injury or damage suffered by reason of the use of this product for a purpose not indicated by the label or when used contrary to the directions or instructions hereon nor with respect to breach of any warranty not expressly specified herein. Buyer accepts this material subject to these terms, and assumes all risk of usage and handling except when used or handled in accordance with this label. Neither manufacturer nor seller makes, and their employees and agents are not permitted to make, any representations or warranties, express or implied by law, not specifically set forth herein.

CAUTION:

Avoid contamination of feed and foodstuffs. Do not leave container where children or animals may take internally. Harmful if swallowed. Do not induce vomiting. May cause irritation of eyes, nose, throat, and skin. Avoid contact with skin and clothing. Wash hands, face, and clothing after use. Do not reuse container. Destroy when empty.

Apply this product only as specified on this label.

Contains Chlorflurenol, a Product of E. Merck Darmstadt, West Germany Patents Pending

®Trademark of United States Borax & Chemical Corporation

© 1970 U.S.B. & C.C.

A 20 MULE TEAM[®] Product

 **BORAX**
A MEMBER OF THE RTZ GROUP

United States Borax & Chemical Corporation
3075 Wilshire Boulevard / Los Angeles, California 90005

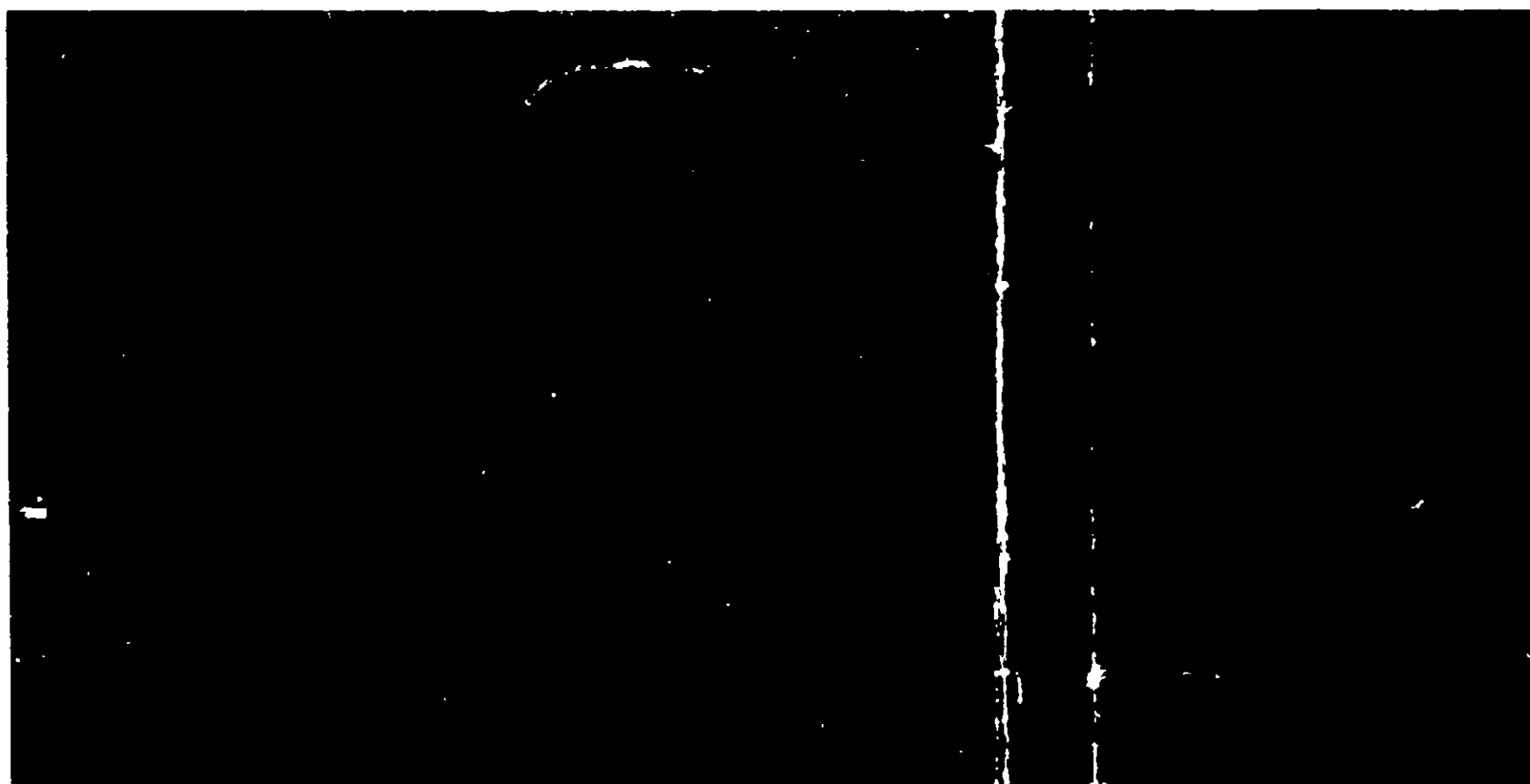
20 MULE TEAM[®] **MAINTAIN A**

20 MULE TEAM[®]
MA

A Tree V
Retardan
plants on
highway
areas.

For U

CAUTION
KEEP OUT
See Other



20 MULE TEAM

A

20 MULE TEAM

A

20 MULE TEAM

A

A Tree Wound Dressing and **Sprout Growth**
Retardant. For retarding growth of woody
plants on noncropland such as utility and
highway rights of way, parks, and similar
areas.

For Use Only By Professional Tree
Trimming Crews.

CAUTION:

KEEP OUT OF REACH OF CHILDREN
See Other Cautions on back of label.

ACTIVE INGREDIENTS:

Methyl 2-chloro-9-hydroxyfluorene- 9-carboxylate	0.18%
Methyl 9-hydroxyfluorene-9-carboxylate	0.04%
Methyl 2, 7-dichloro-9-hydroxyfluorene- 9-carboxylate	0.03%
INERT INGREDIENTS	99.75%

U.S.D.A. Reg. No. 1624 — 102

NET CONTENTS ONE U.S. GALLON