

[1621-1]

1621-1

DIFUSO

CAUTION—COMBUSTIBLE MIXTURE

F.D.N.Y.C. of A. No. 950

DIRECTIONS

Amount of Difuso to use: For common insects such as flies and mosquitoes, use two ounces for every 10,000 cubic feet of space, and increasing quantity for insects more difficult to kill, such as roaches, to five to ten ounces for every 10,000 cubic feet of space.

In the control of the flying insects named, direct spray toward the upper portion of the enclosure and fill the atmosphere with a fine Difuso mist. Against the running and crawling pests named, treat all baseboards, mouldings, furniture, cabinets, shelves, sinks and pipes; toward drains and dark corners, and into cracks, crevices, recesses and similar hiding places. Treat infested areas thoroughly and repeat application as needed.

To effectively control bedbugs, apply liberally to top, ends, sides and bottom of mattresses, spraying thoroughly all tufts, seams, and folds. Spray springs and frame, directing spray into all cracks and lock joints. Treat walls, baseboards, mouldings, floors, closets and bedroom furniture with particular attention to protected bedbug hiding and breeding places.

In controlling infested pantries and food storages, avoid sources of reinfestation by destroying wormy flour, grain, and cereals before treatment. Spray all surfaces thoroughly, with particular attention to cracks, crevices, and other hiding places.

For control of moths (and carpet beetles) spray thoroughly all articles to be protected, paying particular attention to seams and folds. Spray interior surfaces of storage containers, such as closets and trunks with particular attention to cracks where lint might be present. For carpet beetles, treat floor coverings and cracks in floor and around the baseboards. Repeat in thirty days.

For fleas and ticks apply to infested areas and include treatment of sleeping quarters of animal pets.

For flies, mosquitoes, and similar insects, which enter through open doors "Difusing" for only a few minutes at a time at frequent intervals is effective.

Whenever possible, keep doors and windows closed when spraying and for ten minutes after spraying.

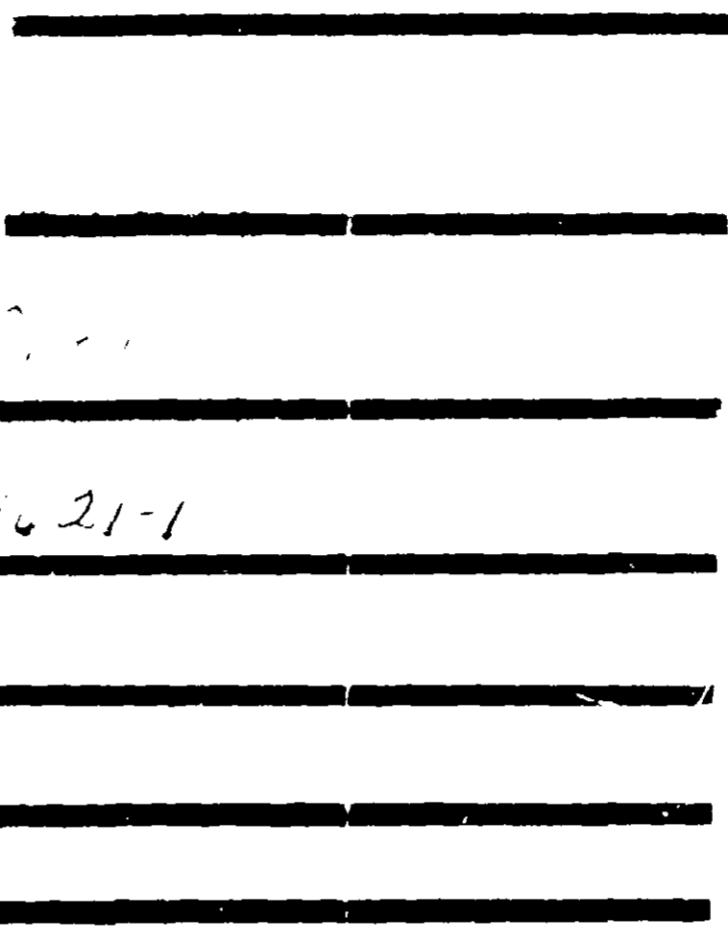
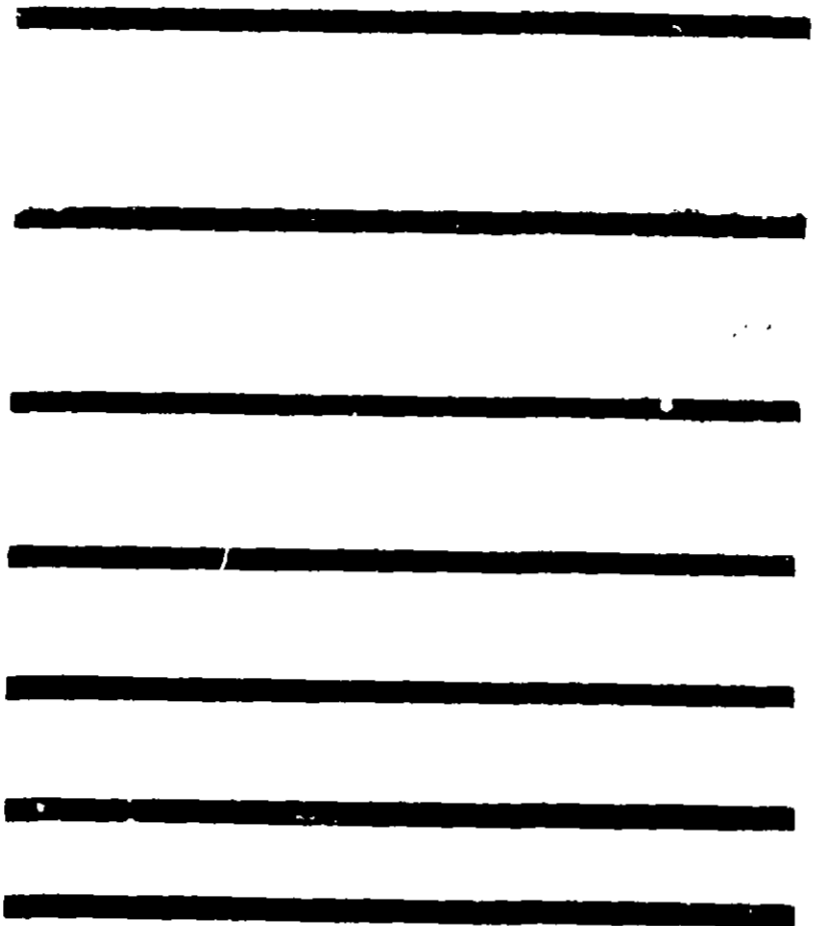
Space spraying in food processing plants should be done when plant is not in operation. Used as a contact spray, food handling surfaces should be covered during treatment or cleaned before re-use.

CAUTION: HARMFUL IF SWALLOWED!

FIRE HAZARD: DO NOT USE OR STORE NEAR HEAT OR OPEN FLAME.

TANGLEFOOT

1621-1



1621-1

GUARANTEE:
Satisfactory Biological
Effectiveness for the
Purposes Claimed When
Used According to Direc-
tions.

**Only the Genuine bears
this trade mark**



USDA REG. NO. 1621-1

DIFUSO

Difuso is recommended for the rapid and effective control of exposed stages of many insect pests including the following:

- | | |
|------------|----------------|
| Roaches | Gnats |
| Silverfish | Wasps |
| Crickets | Hornets |
| Spiders | Boxelder Bugs |
| Scorpions | Clover Mites |
| Ants | Clothes Moths |
| Flies | Carpet Beetles |
| Mosquitoes | Bedbugs |
| Ticks | Fleas |
| | Skippers |

As well as most stored grain pests including granary weevil, rice weevil, confused flour beetle, rust red flour beetle, cadello, sawtoothed grain beetle, spider beetles, angoumois grain moth, Mediterranean flour moth, meal worms, cigarette beetle, drug store beetle and grain mites.

[1621-
38113

NET CONTENTS ONE U.S. GALLON (128 FLUID OUNCES)
4.75 LITER (1.25 GALLON) (15.85 LITER)



INSECTICIDE

CONTAINS PYRETHRUM

ACTIVE INGREDIENTS:

Petroleum Distillates	97.24%
**Piperonyl Butoxide	2.31%
Technical Pyrethrins	.45%

100.00%

***Equivalent to 1.85 (Butylcarbityl) [6-Propylpiperonyl] ether, and to 0.46% of related compounds.

DIFUSO is recommended for use with power applicators such as mechanical aerosol generators and foggers where a highly concentrated and effective insecticide is essential. It is a non-corrosive solution that can be used in any sprayer without injury to equipment.

Recommended for use around food handling and processing establishments. Cover exposed foods.

CAUTION: KEEP OUT OF REACH OF CHILDREN. OBSERVE ALL CAUTION STATEMENTS APPEARING ON LABEL.

THE TANGLEFOOT COMPANY

GRAND RAPIDS, MICHIGAN, U.S.A.