

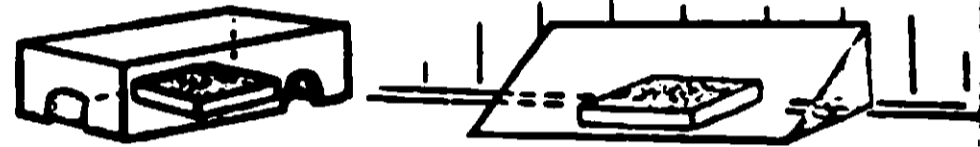
ACCEPTED  
Jan-22-1971

1598-137

**GENERAL DIRECTIONS**

- (a) Place baits in locations where rats and mice feed, water, or travel.
- (b) Contaminated or spoiled baits should be replaced promptly.
- (c) Baiting should continue until all signs of feeding have stopped.
- (d) "Where a continuous source of infestation is present (near-by dumps) permanent bait stations should be established and replenished as needed."

**HOW TO PROTECT TRACKDOWN**



inverted box with 2 inch cut-out holes makes perfect stations.  
OR  
Long plank leaned against wall is simple, effective station

**CAUTION**

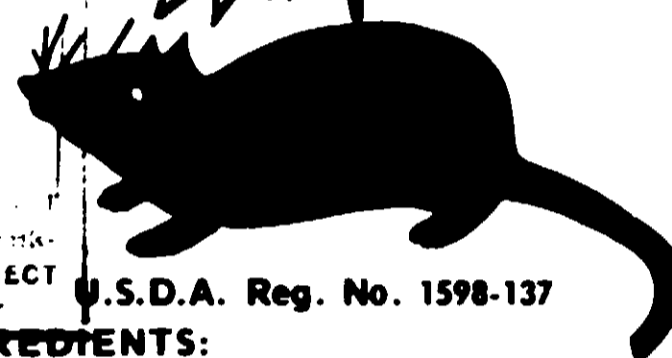
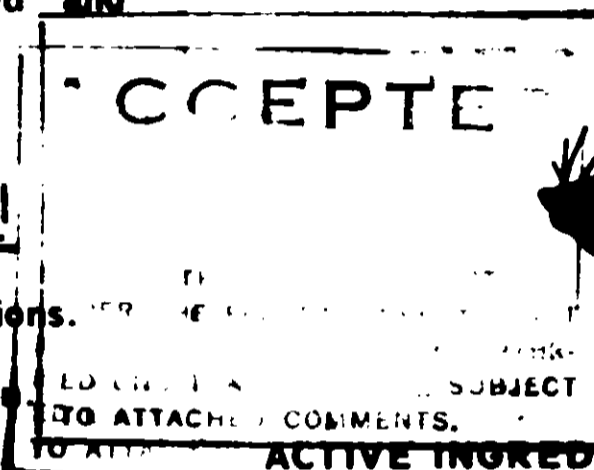
FCX Rat and Mouse Baits contain as its active ingredients and anti-coagulant chemical which if accidentally taken by humans, domestic animals or pets, may reduce the clotting ability of the blood and serious hemorrhage may result. In case baits are eaten, give a tablespoonful of salt in a glass of warm water and repeat until vomit fluid is clear. Call a physician immediately.

**NOTE FOR PHYSICIANS:** When a human has been known to have ingested FCX Rat and Mouse Bait, blood transfusions combined with intravenous injections and oral doses of Vitamin K are indicated as in the case of hemorrhage caused by overdoses of Dicumarol (R).

**NOTICE**

Buyer assumes all risks of use, storage, or handling of this material not in strict accordance with directions given herewith.

**FCX**



<b>ACTIVE INGREDIENTS:</b>	
2-Pivalyl-1, 3-indandione.....	0.025%
<b>INERT INGREDIENTS:</b> .....	99.975%
<b>TOTAL</b> .....	<b>100.000%</b>

**CAUTION**

**KEEP OUT OF REACH OF CHILDREN**

See additional precautionary statements and directions for use on side panels

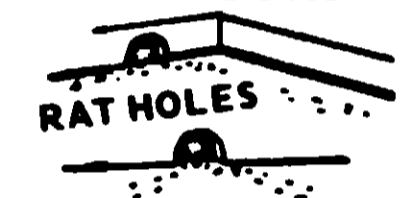
MANUFACTURED BY

**FCX, Inc. RALEIGH, N.C.**

**DIRECTIONS FOR RAT CONTROL**

- (a) Bait should be placed along walls, in corners, and in concealed locations where rats can feed unobserved.
- (b) Four ounces of bait per station should be the minimum amount used.
- (c) Bait should be placed in locations not accessible to children, pets, and domestic animals, or in tamper-proof bait boxes.
- (d) An uninterrupted supply of bait should be maintained for at least 15 days.

**PLACE BAIT**



**OUTDOORS**



**DIRECTIONS FOR MOUSE CONTROL**

- (a) A tablespoon (1/4 to 1/2 ounce) of bait should be placed at 8-12 foot intervals.
- (b) Bait should be placed in locations not accessible to children, pets, or domestic animals, or in tamper-proof bait boxes.
- (c) An uninterrupted supply of bait should be maintained for at least 15 days.

**HOW TO USE BAIT AGAINST MICE**

Place trays against wall or in corners wherever mice are seen.

