

[1588-11]

This finished spray contains insecticidal ingredients that are specifically selected for use around food, food handling utensils and equipment, and in food storage areas. Effective against accessible stages of confused flour beetles, grain weevils, cadelle and other insects infesting grain and food handling plants when used as directed.

Use the product as a space spray in food processing plants only when the plant is not in operation. Foods should be removed or covered during treatment. All food processing surfaces should be covered or thoroughly cleaned before using.

CAUTION

Do not spray into open flame.

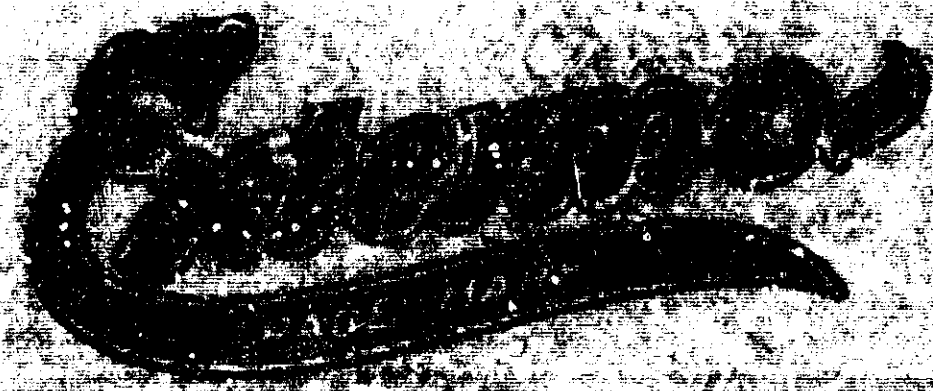
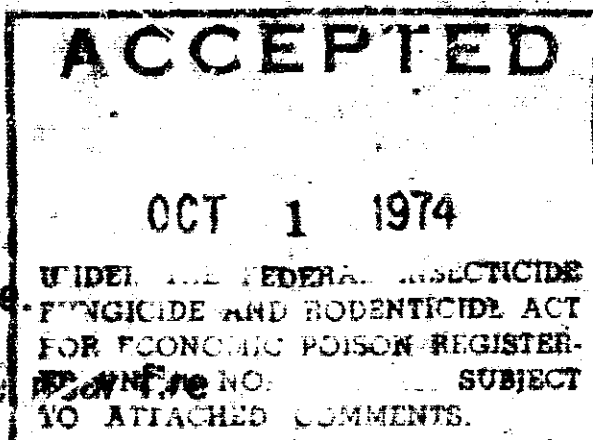
Do not spill, pour, or store near fire or flame.

Keep container sealed.

Do not spray directly on food or feed products.

EPA Est. 1588-IA-1

EPA Est. 1588-NY-1



MILL SPRAY INSECTICIDE

EPA Reg. No. 1588-11

AN EFFICIENT INSECTICIDE For Use in the Food Industries

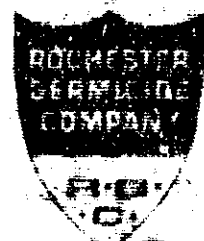
ACTIVE INGREDIENTS 100% CONSISTING OF:
PETROLEUM DISTILLATES-99.05%
N-OCTYL BICYCLO HEPTENE DICARBOXIMIDE-0.50%
PIPERONYL BUTOXIDE, TECHNICAL*-0.30%
PYRETHRINS-0.15%

*Consists of 80% (butylcarbityl) (6-propylpiperonyl) ether and 20% other related compounds.

CAUTION: Keep Out Of Reach Of Children.

Harmful If Swallowed.

See side panel for additional cautions.



ROCHESTER GERMICIDE COMPANY

ROCHESTER, NEW YORK 14603

BRANCH WAREHOUSES IN PRINCIPAL CITIES

STORED FLOUR IN BAGS

Using an electric or compressor type sprayer spray down aisles and under for each sack-load of flour. Sacks should be arranged so that there is at least one foot between each unit.

OVERHEAD PROOFER

Empty proofer and blow out accumulated flour. Pay particular attention to base of elevator. Close openings except at each end. Spray a heavy mist of Extermo Mill Spray into equipment. Spray into and around elevators, then close all openings. Ventilate equipment before using again.

SPACE SPRAYING

Either a steam or compressor type sprayer may be used to clear rooms of house flies. Close openings and fill room with a fog of Extermo Mill Spray. Allow plenty of time for complete deinfestation, air out, and sweep up dead insects.