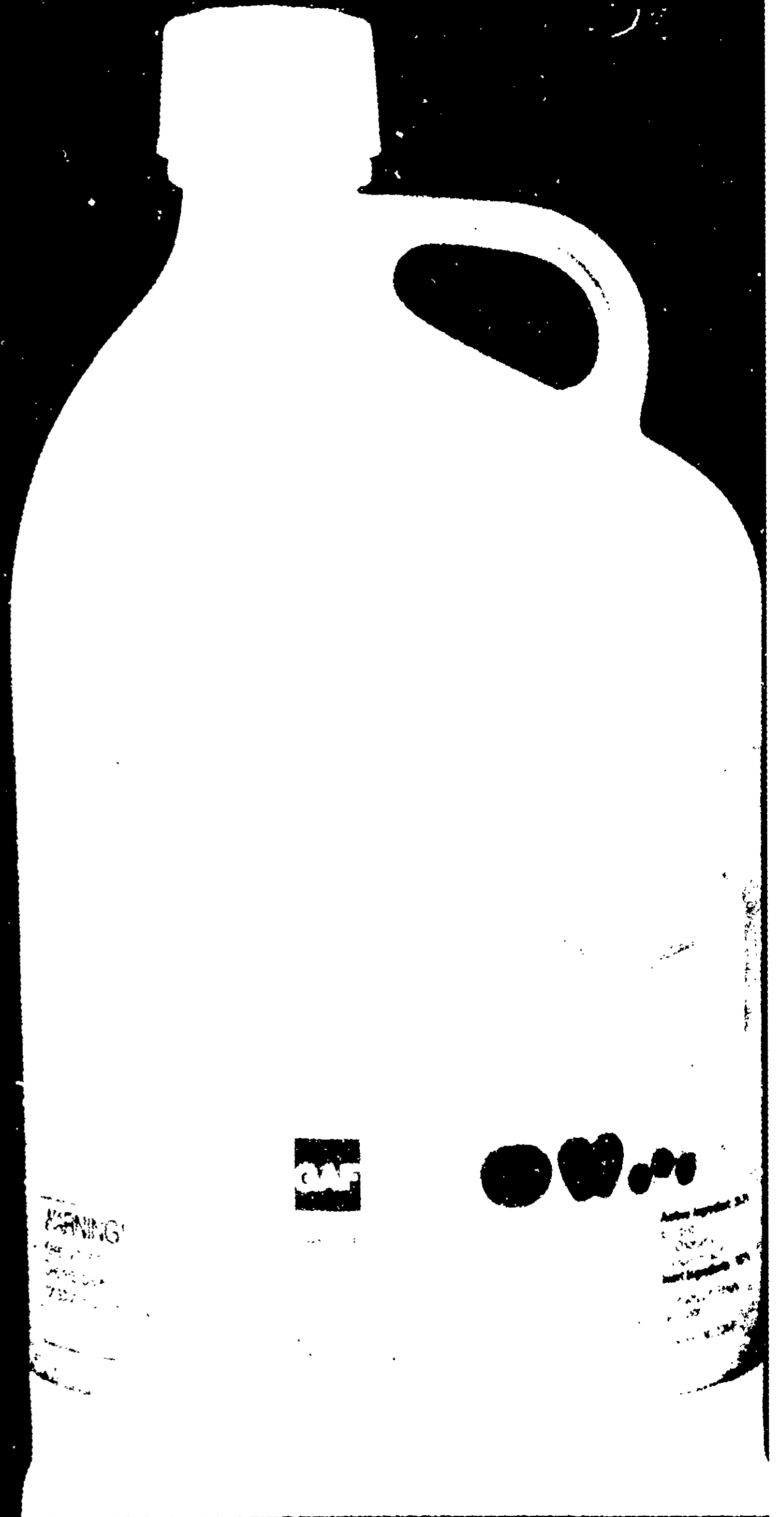
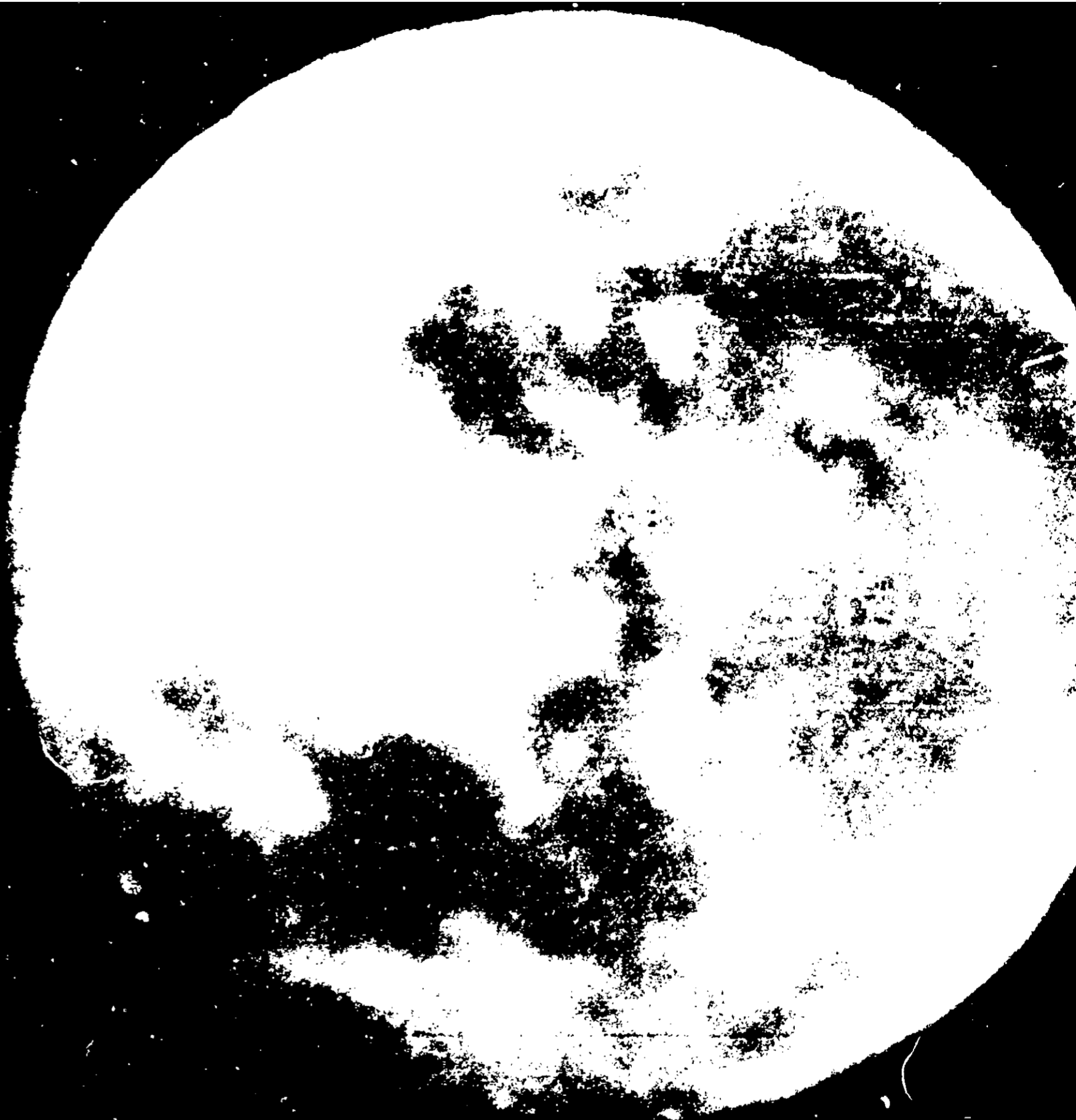


The Harvest Regular





*When your harvest moon is shining,
it's time for GAF Cepha. Make your whole harvest
the pick of the crop with Cepha plant regulator.*

Make your whole harvest the pick of the crop.

The benefits of GAF Cepha plant regulator can be presented in many different ways. But they all add up to one big benefit: with Cepha, you can now regulate your harvest for more profit.

There are many important benefits that result from using Cepha. It's hard to list them all, but we've listed 15 for you. Here's a list:

1. Earlier ripening
2. Earlier marketing
3. More uniform ripening
4. Greater firmness and fruit life
5. Fruit suppleness
6. Schedule flexibility
7. Ability to harvest in stages
8. Increased resistance to disease
9. Increased resistance to insect damage
10. Increased yields
11. Elimination of equipment waiting time
12. Faster harvesting
13. Cleaner harvest
14. Less labor needed for sorting
15. Some grade improvement
16. Even improved flavor

The whole benefit is greater than its parts.

Each of these benefits is important. We don't mean to say that one benefit is more important than another. Each is important. Each is important to the grower. Each is important to the consumer. Each is important to the market. Each is important to the whole. But the whole benefit is greater than its parts. The whole benefit is greater than its parts.

But even that is only part of the story. All of the individual benefits add up to work together in one benefit: leading to another, each complementing the next, and all of them adding up to give you a harvest of more profit, with less time, less wear and tear on your equipment.

Don't think of Cepha as just a plant regulator. It's The Harvest Regulator.

We would like to explain in general how all of the benefits listed to the left can work together to help you manage your harvest for more profits.

First, when you use GAF Cepha plant regulator, you can expect to harvest earlier— from 7 to 14 days earlier. Because by stimulating ethylene production ripening is promoted.

Therefore, there is more uniform ripening. Fruits on the inside and outside of the tree ripen at the same time. As a result, the quality of the fruit is more uniform. You can harvest when you want. In some cases, you'll want to harvest earlier to take advantage of a higher price. In other cases, you'll want to harvest later to take advantage of a higher price. In either case, you'll want to harvest when you want. In some cases, you'll want to harvest earlier to take advantage of a higher price. In other cases, you'll want to harvest later to take advantage of a higher price. In either case, you'll want to harvest when you want.

Some growers who want to harvest earlier will want to use the scheduling feature to coordinate marketing with storage handling facilities and processing facilities.

Because ripening is uniform and predictable, equipment keeps operating without excessive waiting time.

Furthermore, harvesting is easier and faster because Cepha promotes development of the abscisic acid layer that insulates the fruit from the stem. That means less wear and tear on your equipment. And, in the case of orchards, it means less wear and tear on trees.

You will find that there is often some grade improvement. There are two reasons for this. First, Cepha lets you harvest your crop at optimum ripeness. Second, since harvesting is easier and easier, there is less bruising, tearing, and crushing of fruit.

There is also marked improvement in coloration. And apples for the fresh market have been judged sweeter, firmer, and better textured.

Help when you really need it.

Harvest time is when the fruit is mature, the fruit is hard work are fully exposed to natural and manmade threats. This is when you need frost protection and other equipment to breakdown.

Cepha lets you manage the harvest time by making it possible to harvest earlier or later. In either case, you'll want to harvest when you want. In some cases, you'll want to harvest earlier to take advantage of a higher price. In other cases, you'll want to harvest later to take advantage of a higher price. In either case, you'll want to harvest when you want.



GAF

GAF CORPORATION

NET CONTENTS
ONE GALLON

GAF for

*"To me, the big advantage was
the way Cepha works... the way*

Here's what happened. When I left
Cepha, I went to the bank and
the bank gave me a check for
\$100,000. I went to the bank
and I got a check for \$100,000.

He was supposed to arrive on
the 15th of August. The next two
weeks he was supposed to be on
September 3rd. Without Cepha, Mr.
Erke would have been able
to arrive until about a week ago.

*"I don't like to go in October.
We usually start getting heat waves
and get a chance of rain
that holds us here.*

*Some time later I am going
to the bank to get a check.*

The amount of spraying with Cepha
is 1/2 ounce per acre. The amount
of water is 150 gallons per acre. The
amount of water is 150 gallons per
acre. The amount of water is 150
gallons per acre. The amount of
water is 150 gallons per acre.



GAF Cepha plant regulator can be sprayed by
Erb or used as a soil moisture conditioner for

1. Work with the same rate range of GAF Ceph as you regularly use but use it more often than usual. Work through a period of 10 to 15 days, spraying every 7 to 10 days.



3. Be sure to check the root system. Stress that it doesn't show in the top of the plant is not necessarily in the roots. The root on the right has been damaged by over irrigation.



5. Mature greens that look like these are in the right range for spraying. Gel formation shows throughout the flesh. If gel is localized, it's not ready for spraying.

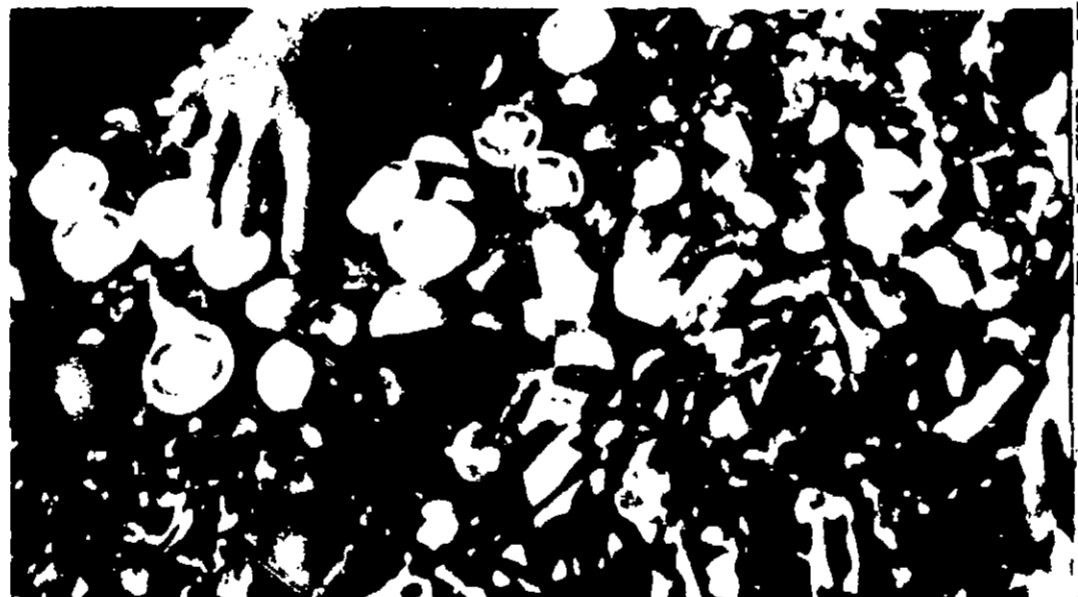


7. Ceph can be applied by ground or air equipment. It's important that, with a thick canopy, you get the maximum coverage. Average coverage is 100 to 150 gallons per acre.

2. Shake the tomatoes off. Then check the plants themselves for signs of stress. If signs of stress are present, do not spray. Plants under severe stress should not be sprayed with Ceph.



4. Slice the tomatoes to determine the percentage of mature greens. A mature green is a tomato in which gel is localized. Show 2 to 3 beginning gel, full gel breaker.



6. You're ready to spray if slicing tests indicate 60% to 75% mature greens. The sampling is a batch, with a few reds, a few green breakers, but mostly mature greens is ready.



8. About a week after spraying GAF Ceph, you should see an increase in weather-related problems. The increase in problems will be most noticeable in the earlier harvest.

TO determine when GAF Ceph

As with any other agricultural chemical, you have to be at the right time, under the right conditions. Every year is evaluated with the help of your county agent.

...the best time to spray is when the tomatoes are in the mature green stage. When the tomatoes are in the mature green stage, they are most susceptible to the damage caused by the fungus. The fungus is most active when the tomatoes are in the mature green stage. The fungus is most active when the tomatoes are in the mature green stage.

Stress calls for caution.

On the other hand, if the tomatoes are in the mature green stage, they are most susceptible to the damage caused by the fungus. The fungus is most active when the tomatoes are in the mature green stage. The fungus is most active when the tomatoes are in the mature green stage.

...the best time to spray is when the tomatoes are in the mature green stage. When the tomatoes are in the mature green stage, they are most susceptible to the damage caused by the fungus. The fungus is most active when the tomatoes are in the mature green stage.

The optimum stage for Ceph.

The optimum stage for Ceph is when the tomatoes are in the mature green stage. When the tomatoes are in the mature green stage, they are most susceptible to the damage caused by the fungus. The fungus is most active when the tomatoes are in the mature green stage.

on tomatoes.

Cyfluthrin is registered with the Environmental Protection Agency (EPA Reg. No. 1529-20) for use on tomatoes. After spraying, it breaks down principally into ethylene and materials found naturally in soil.

WARNING!

Harmful if swallowed. May cause eye damage. Vapor and liquid irritating.

1. Avoid contact with eyes.
2. Avoid contact with skin.
3. Avoid contact with clothing.
4. Avoid contact with food.
5. Avoid contact with water.
6. Avoid contact with animals.

FIRST AID

In case of eye contact, immediately flush eyes with plenty of water for at least 15 minutes. Call a physician.

IMPORTANT

General information. Read carefully.

1. Consult the label for complete directions.
2. Don't mix with other pesticides.
3. One spray only.
4. Spray rates.
5. When spraying.

6. Foliar response

7. Time

8. Do not use

9. Do not use

DIRECTIONS

Midwest and Eastern Areas

When to apply

Spray rate

How to apply

Harvest

Texas, California and Western Areas growing similar varieties in similar climates

Early-midseason varieties

When to apply

Spray rate

How to apply

Harvest

Late season or Coastal Regions

When to apply

Spray rate

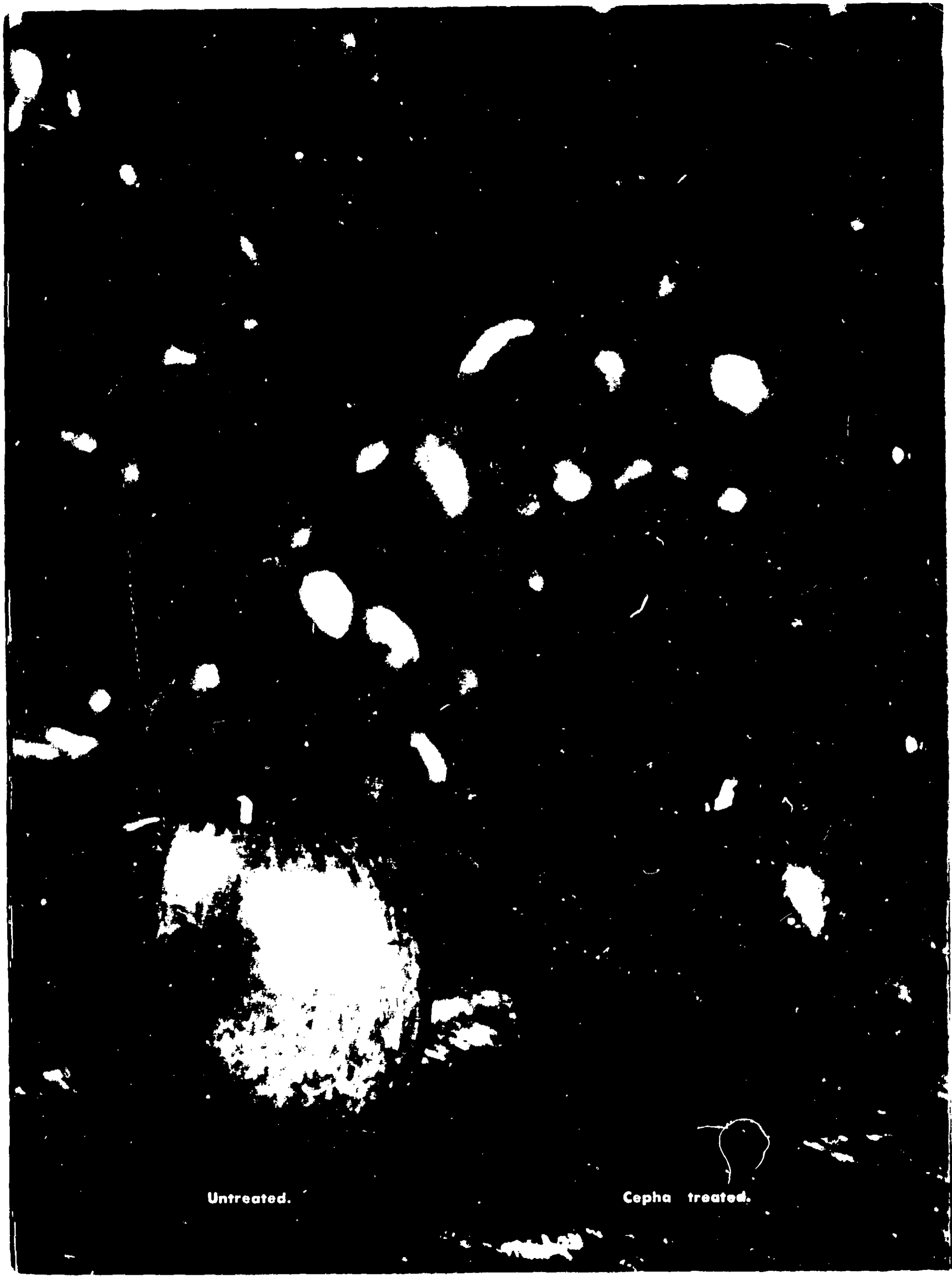
How to apply

Harvest



CAF





Untreated.

Cepha treated.

GAF Cepha for cherries.

"I'm getting my yield from 26 to 30 percent more recovery using Cepha... and we harvest a week early."

—Vern L. Co, Treasurer, M.D. Co.

Mr. Co. who manages a 100-acre orchard in the State of Michigan, says: "I have used GAF Cepha for several years with very good results. It has helped me to get a better yield and a better quality of fruit. I have also found that it has helped me to get a better yield and a better quality of fruit. I have also found that it has helped me to get a better yield and a better quality of fruit."

Before using GAF Cepha, Mr. Co. used to get a yield of 26 percent. Now, using GAF Cepha, he gets a yield of 30 percent. This is a 4 percent increase in yield. He also says that the fruit is of a better quality and that he has been able to harvest a week earlier.

"I have gotten a 26 to 30 percent more recovery using Cepha... and we harvest a week early."

—Vern L. Co, Treasurer, M.D. Co.

Mr. Co. also says that he has found that GAF Cepha has helped him to get a better yield and a better quality of fruit. He also says that he has been able to harvest a week earlier. This is a 4 percent increase in yield. He also says that the fruit is of a better quality and that he has been able to harvest a week earlier.

"I have gotten a 26 to 30 percent more recovery using Cepha... and we harvest a week early."

—Vern L. Co, Treasurer, M.D. Co.

"I have gotten a 26 to 30 percent more recovery using Cepha... and we harvest a week early."

—Vern L. Co, Treasurer, M.D. Co.

"I have gotten a 26 to 30 percent more recovery using Cepha... and we harvest a week early."

—Vern L. Co, Treasurer, M.D. Co.

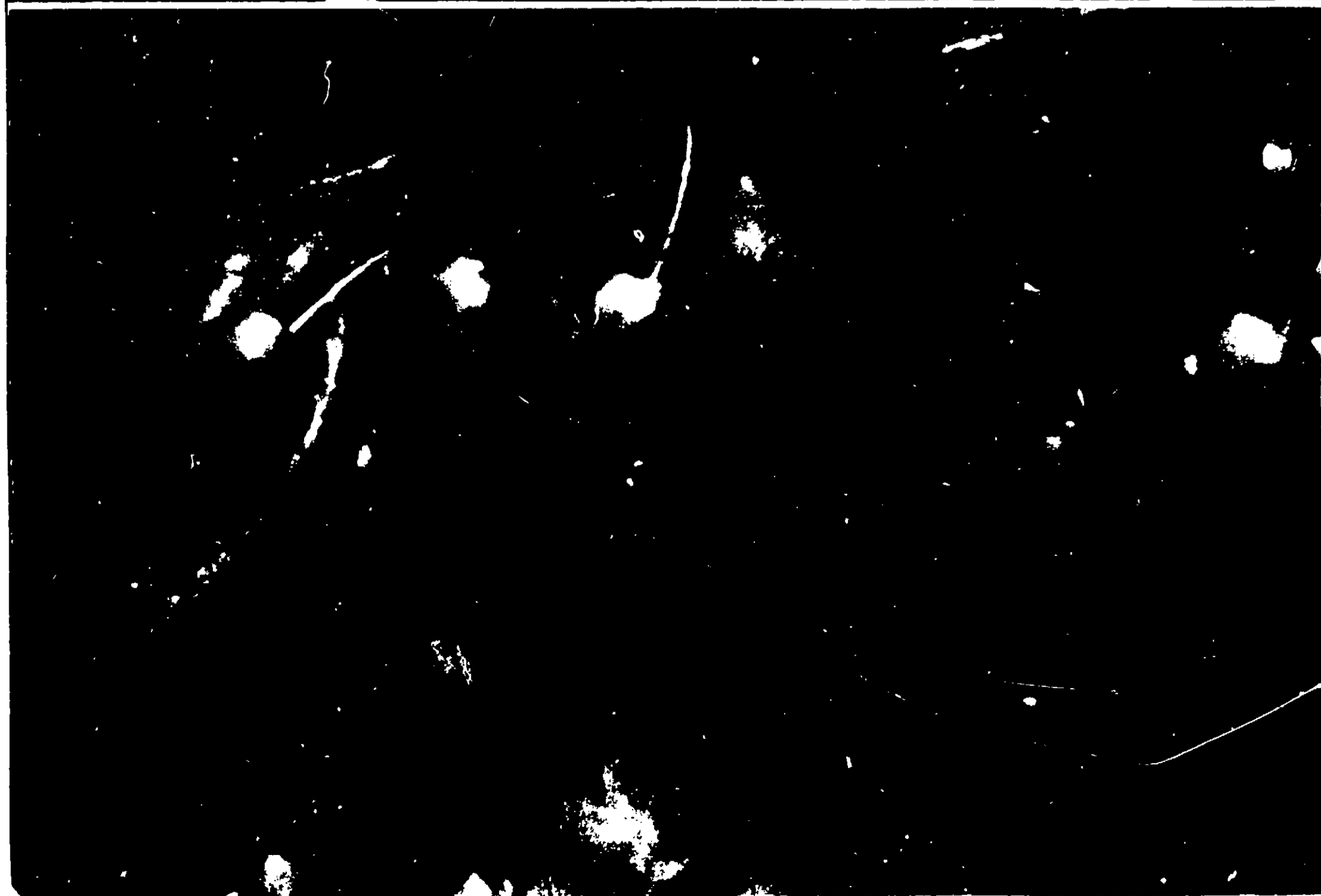
"I have gotten a 26 to 30 percent more recovery using Cepha... and we harvest a week early."

—Vern L. Co, Treasurer, M.D. Co.

"I have gotten a 26 to 30 percent more recovery using Cepha... and we harvest a week early."



Over half recovered... of the crop... in a week... of the crop... in a week...





GAF and you.

Eltherton is a development
of GAF research.

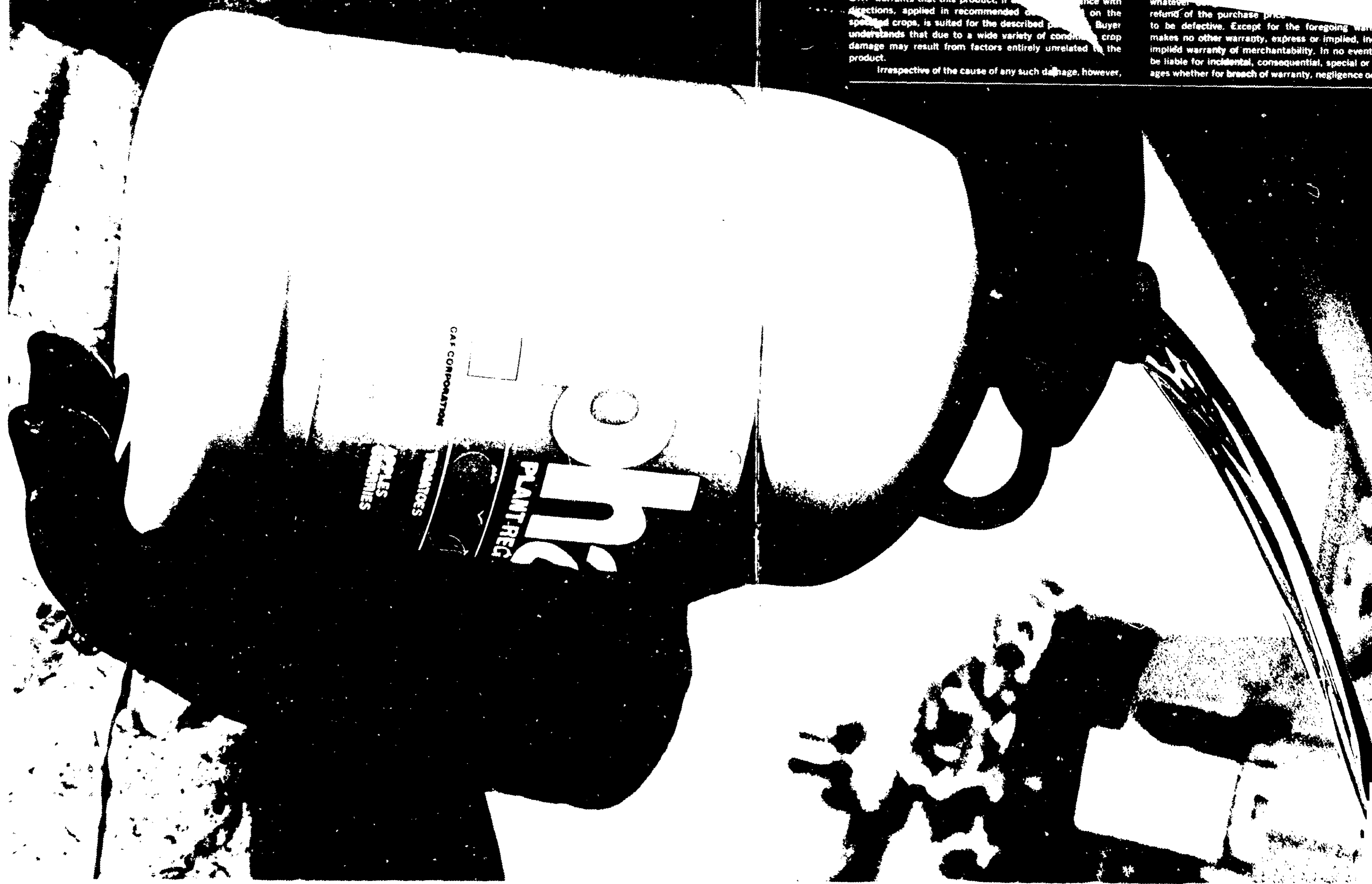
GAF has been
in agricultural chemicals
for many years.

*Cepha plant regulator. It's not just a
plant regulator. It's The Harvest Regulator.*

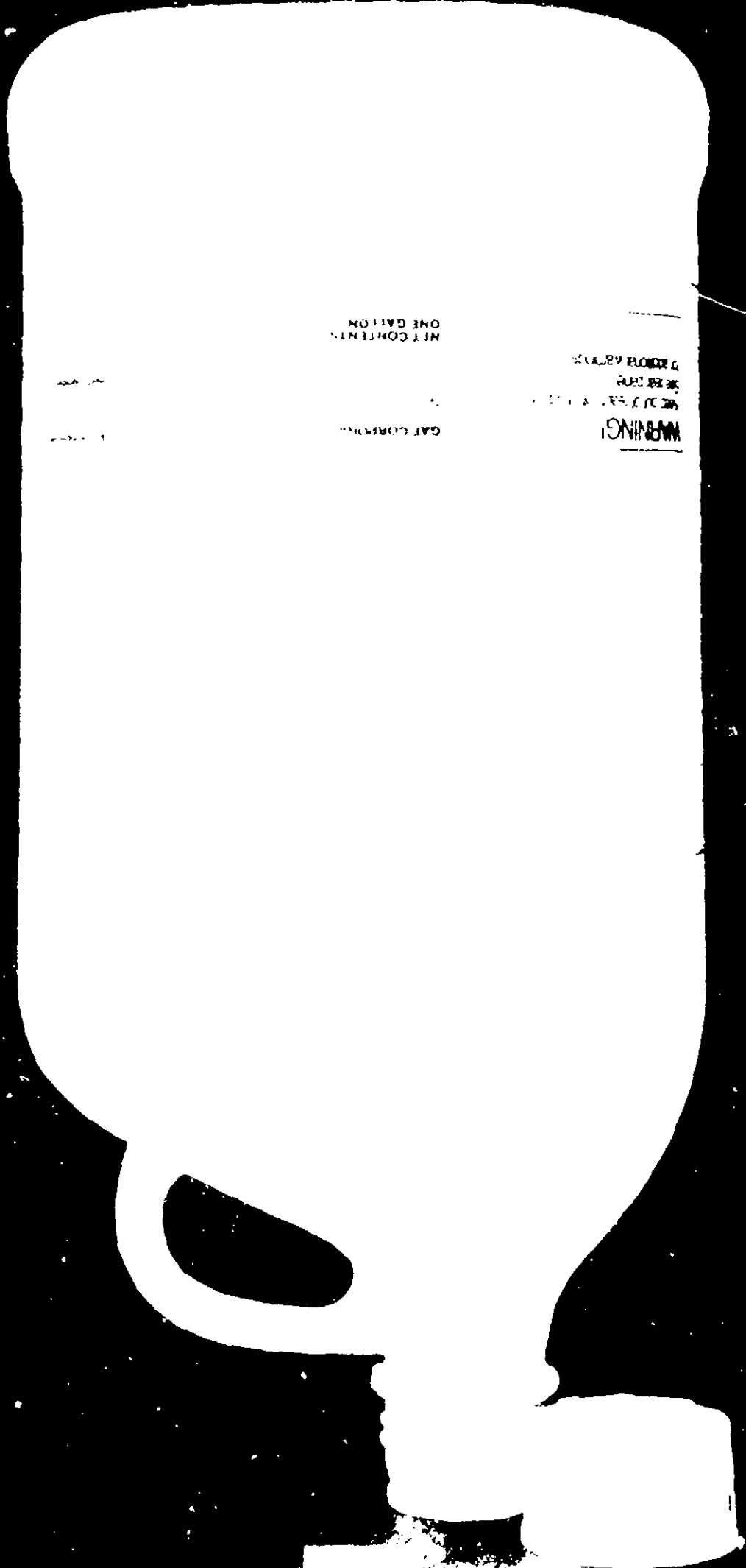
GAF warrants that this product, if used in accordance with directions, applied in recommended quantities on the specified crops, is suited for the described purposes. Buyer understands that due to a wide variety of conditions, crop damage may result from factors entirely unrelated to the product.

Irrespective of the cause of any such damage, however,

whenever the product is found to be defective. Except for the foregoing warranty, GAF makes no other warranty, express or implied, including implied warranty of merchantability. In no event shall GAF be liable for incidental, consequential, special or other damages whether for breach of warranty, negligence or otherwise.



GAF[®] Cepha: The Harvest Regulator.



... first made ethophon.

PRINTED IN U.S.A.