

Keep Out of Reach of Children. Harmful if Swallowed. Do Not Inhale.

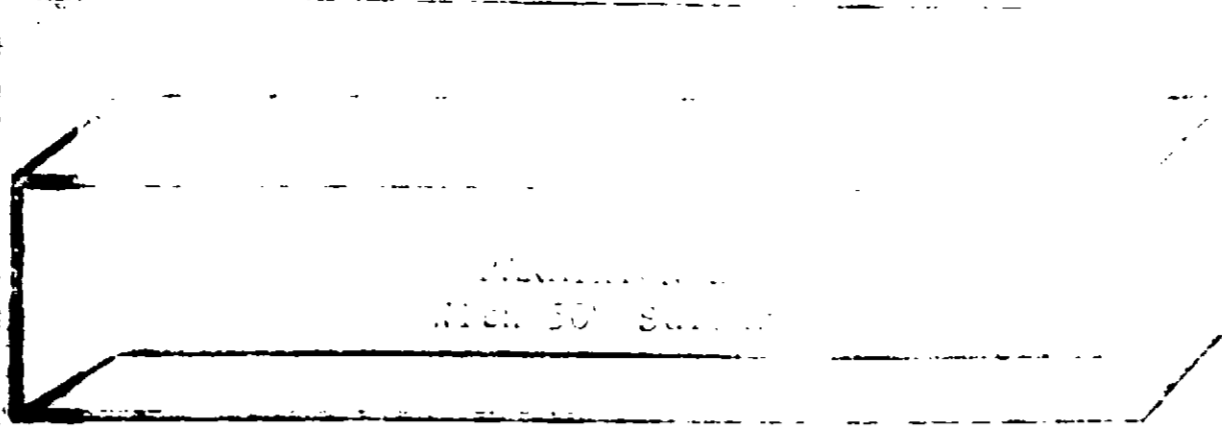
WARNING

May Be Fatal If Swallowed, Inhaled, or Absorbed Through Skin. Rapidly Absorbed Through Skin! Do not get on eyes, on skin, or on clothing. Wear natural rubber gloves, protective clothing and goggles. In case of contact wash immediately with soap and water. Wear a mask or respirator of a type passed by the U.S. Department of Agriculture for Parathion protection. Keep all unprotected persons out of operating areas or vicinity where there may be danger of drift. Vacated areas should not be re-entered until drifting insecticide and volatile residues have dissipated. Do not contaminate feed and feedstuffs. Wash hands, arms, and face thoroughly with soap and water before eating or smoking. Wash all contaminated clothing with soap and hot water before reuse. Keep all unprotected persons out of operating areas or vicinity where there may be danger of drift. Vacated areas should not be re-entered until drifting insecticides and volatile residues have dissipated.

ANTIDOTE

If Swallowed. Give a tablespoonful of salt in a glass of warm water and repeat until vomit fluid is clear. Have victim lie down and keep quiet. DO NOT INDUCE EMESIS!

If on Skin. In case of contact, remove contaminated clothing and immediately wash skin with soap and water.

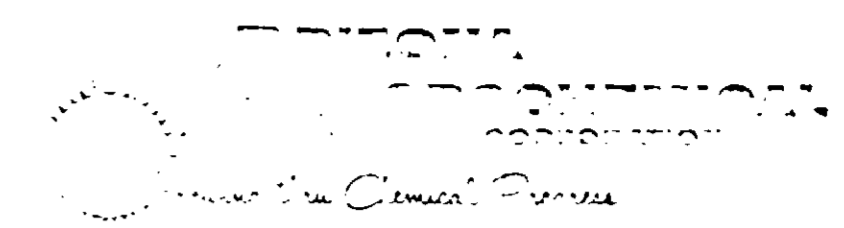


ALFALFA  
MICH 50 Sulfur

U. S. D. A. Reg. No. 1320—

<b>ACTIVE INGREDIENTS:</b>	
Parathion-----	2.7%
Sulfur-----	57.00%
<b>INERT INGREDIENTS:-----</b>	<b>40.30%</b>
	<u>100.00%</u>

\*O,O-diethyl,O-p-nitrophenyl thiophosphate



Head Office: 224 East S. D. Ave. — Phoenix, Arizona 85001 — Phone 253-1111

This insecticide is for the control of aphids, red spiders, beet armyworm, yellow-striped armyworm, leopards, lygus, thrips and grasshoppers on alfalfa, corn, sorghum and wheat. Apply at a rate of 15 to 25 pounds per acre depending upon the type of equipment used, the size and growth of the crops, and the insect to be controlled. Further dustings should be governed by populations of damaging insects. For further information on this material, contact your state agricultural experiment station. Do not apply within 15 days of harvest to any of the crops.

DANGER

Do not allow to drift to sulfur allergic crops such as cucurbits (melons, squash, cucumbers, etc.) or tobacco. Burn or destroy containers, never reuse. Stay out of smoke and fumes.

This product toxic to fish and wildlife. Keep out of ponds, streams, or brooks. Apply this product only as directed on this label.

1526437