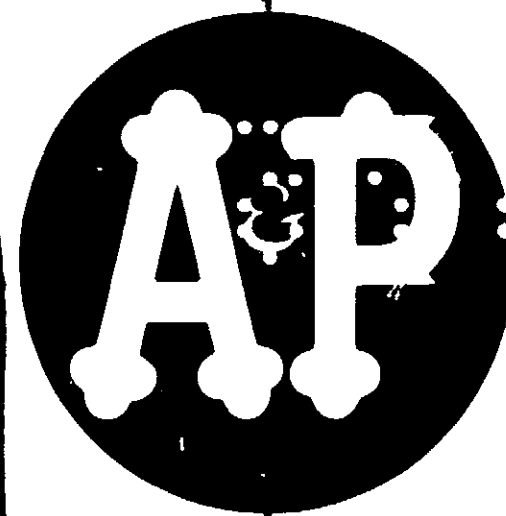


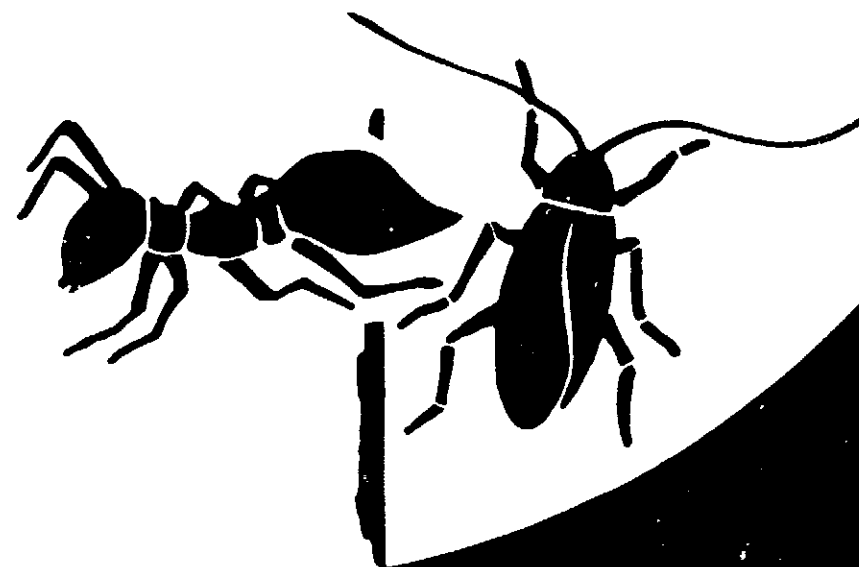
ACCEPTED

MAY 10 1975

Under the Federal Insecticide,  
Fungicide, and Rodenticide Act,  
as amended, the pesticide  
registered under  
EPA Reg. No. 1562-6



# ANT & ROACH KILLER



FOR ANTS, ROACHES, SILVERFISH

NET WT. 14 OZ. 396 G.

**CAUTION: CONTENTS UNDER PRESSURE**  
**KEEP OUT OF REACH OF CHILDREN**

See other cautions on back panel

YELLOW RED BLUE

BLACK 111 405543

## DIRECTIONS

**TO OPERATE:** Spray with can upright approximately 12" from object being sprayed with opening on valve pointing away from people, plants and pets. Spray until wet. Avoid excessive spraying of plastics, rubber and asphalt surfaces.

**ROACHES, CRICKETS, SILVERFISH, SPIDERS, SCORPIONS, SAW-TOOTHED GRAIN BEETLES (EXPOSED STAGE), WATER BUGS:** Spray liberally into cracks, crevices, baseboards, beneath and behind cabinets, refrigerators, sinks, stoves and waste containers. Repeat as necessary.

**For ANTS:** Spray trails and places where ants enter premises. Repeat as necessary.

**BROWN DOG TICKS:** Spray pet's sleeping quarters, baseboards, door frames and around window frames and local floor areas. Repeat as needed. Change bedding after spraying. Do not spray animals.

**OUTDOOR USE: CLOVER MITES, CRICKETS, EARWIGS, FLEAS, MILLIPEDES, SOWBUGS AND BROWN DOG TICKS:** Thoroughly spray infested areas including screens, doors, window frames, foundations, patios, ant hills and runways. Do not spray vegetation.

**ACTIVE INGREDIENTS:** Pyrethrins 0.050%, \*Piperonyl butoxide, technical 0.100%, N-octyl bicycloheptene dicarboximide 0.166%, o-isopropoxyphenyl methylcarbamate 0.500%, Petrolatum distillate 57.711%, **INERT INGREDIENTS:** 41.473%, Total 100.000%.

\*Consists of .08% (butylcarbityl) (6-propylpiperonyl) ether and .02% related compounds.

## CAUTION

May be harmful if swallowed, inhaled, or absorbed through the skin. Do not apply to humans, pets or plants. Avoid breathing of spray-mist and provide adequate ventilation of area being treated. Contact with skin, eyes, or clothing should also be avoided. Wash thoroughly with soap and warm water after handling. Do not spray for more than 1 1/2 minutes in average room. Avoid contamination of food, utensils and food preparation areas. Do not return pets until area is dry.

Do not use in edible product areas of food processing plants, restaurants or other areas where food is commercially prepared or processed. Do not use in serving areas while food is exposed. Do not allow children in treated areas until dry. Should poisoning occur, get prompt medical care. Do not use as a space spray. Not for bedding or flea control indoors.

**FLAMMABLE: DO NOT SPRAY INTO OR NEAR OPEN FLAME. DO NOT SMOKE WHILE USING.**

**WARNING: Flammable!** Contents under pressure. Do not use near fire, sparks, or flame. Do not puncture or incinerate container. Exposure to temperature above 120° F. may cause bursting.

EPA REG. NO. 1562-6  
EST. 1562-NY-1

THE GREAT A&P TEA CO., INC., MONTVALE, N.J. 07645 U.S.A.



CUSTOMER GREAT A&P TEA CO. ENG 111 405543 FCY 068 SIZE 2 1/2 x 6 1/2  
LAYOUT INDEX NO W-11 D 13-17-75 C 8.484 x 6.875 STYLE RD. PRES.  
COLORS YELLOW-RED-BLUE-BLACK — ON WHITE COAT ARTIST 9043-18