



OFFICE OF CHEMICAL SAFETY AND POLLUTION PREVENTION

WASHINGTON, D.C. 20460

January 23, 2026

Kelly Webster
Director, Regulatory Affairs
Willert Home Products
4044 Park Avenue
Saint Louis, MO 63110

Subject: Label Amendment - Registration Review Mitigation for Naphthalene
Product Name: ENOZ REPELLENT STATIONS
EPA Registration Number: 1475-160
Case Number: 480710
Application Dates: 4/27/2021

Dear Kelly Webster:

The Agency, in accordance with the Federal Insecticide, Fungicide, and Rodenticide Act (FIFRA), as amended, has completed reviewing all the information submitted with your application to support the Registration Review of the above referenced product in connection with the Naphthalene Interim Decision, and has concluded that your submission is acceptable. The label referred to above, submitted in connection with registration under FIFRA, as amended, is acceptable.

Should you wish to add/retain a reference to the company's website on your label, then please be aware that the website becomes labeling under the Federal Insecticide, Fungicide, and Rodenticide Act and is subject to review by the Agency. If the website is false or misleading, the product would be misbranded and unlawful to sell or distribute under FIFRA section 12(a)(1)(E). 40 CFR 156.10(a)(5) list examples of statements EPA may consider false or misleading. In addition, regardless of whether a website is referenced on your product's label, claims made on the website may not substantially differ from those claims approved through the registration process. Therefore, should the Agency find or if it is brought to our attention that a website contains false or misleading statements or claims substantially differing from the EPA approved registration, the website will be referred to the EPA's Office of Enforcement and Compliance Assurance.

A stamped copy of your labeling is enclosed for your records. This labeling supersedes all previously accepted labeling and must be used at your next label printing. You must

submit one copy of the final printed labeling before you release the product for shipment with the new labeling. In accordance with 40 CFR 152.130(c), you may distribute or sell this product under the previously approved labeling for 12 months from the date of this letter. After 12 months, you may only distribute or sell this product if it bears this new revised labeling or subsequently approved labeling. "To distribute or sell" is defined under FIFRA section 2(gg) and its implementing regulation at 40 CFR 152.3.

If you have any questions about this letter, please contact Christian Bongard by phone at 202-566-2248, or via email at Bongard.Christian@epa.gov.

Sincerely,

A handwritten signature in black ink that reads "Jaclyn Pyne". The signature is written in a cursive, flowing style.

Jaclyn Pyne, Team Leader
Risk Management and Implementation Branch 3
Pesticide Re-Evaluation Division
Office of Pesticide Programs

ENCLOSURE: Stamped label

MASTER LABEL

ENOZ® REPELLENT STATIONS EPA Reg. No. 1475-160

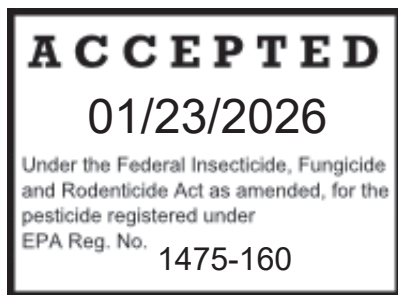
This Master Label contains two (2) sub-labels for the following products:

Enoz Repellent Stations:

Contains 1, 2, 4, 6, or 8 one-ounce repellent station[s]

Enoz Repellent Station Refills

Contains 16, 24, or 32 one-ounce packets to refill repellent stations



Sub-Label #1**ENOZ® REPELLENT STATIONS****Alternate Brand Names**

- Enoz No Zone®
- Enoz No Zone® Refills

FRONT PANEL**Optional Marketing Claims**

1. For Repelling Rabbits, Deer, Tree Squirrels, Bats, Dogs and Cats
2. Rabbit, Deer, Tree Squirrel, Bat, Dog and Cat Repellent
3. Rabbit and Deer Repellent
4. Squirrel and Bat Repellent
5. Repels Squirrels and Bats from Attics.
6. Repels Deer, Rabbits, Squirrels & Bats
7. Repel Deer and Rabbits from Hostas, Gardens, Flower Beds & Potted Plants
8. Durable
9. Pre-filled
10. Repellent Stations
11. No-touch
12. No handling
13. No [direct] contact with skin
14. No mess no guess!
15. Pre-filled for optimum effectiveness
16. Pre-filled for efficiency
17. No-touch pre-filled stations
18. Refillable with Enoz Repellent Station Refills
19. Refillable
20. Easy to Use
21. Contains x – 1 oz. Station[s] (x = count)
22. Contains x Station[s] (x = count)
23. Will not Wash Away
24. Weatherproof Stations protect repellent for ongoing effectiveness
25. Weatherproof Won't Wash Away
26. Weatherproof, camouflaged stations seamlessly blend in with the environment for invisible protection that won't wash away.
27. Protect Your Plants. Create a No-Zone™.
28. Patented Design. U.S. Pat. 9,521,836
29. Includes Stakes to Hang or Place Stations

- 30. No repellent contact with plants
- 31. 99.95% Naphthalene
- 32. Ready-to-Use
- 33. [1][2][4][6][8] Station[s] Pre-filled with Trusted Enoz® Old Fashioned Moth Balls
- 34. Trusted for Generations!
- 35. Protect Your Plants. Money Back Guarantee*
- 36. Hang [or Stake] around Plants [to be Protected]

FRONT PANEL (continued)

ACTIVE INGREDIENT: Naphthalene.....99.95%
OTHER INGREDIENTS:00.05%
TOTAL:100.00%

KEEP OUT OF REACH OF CHILDREN WARNING

See back panel for additional precautionary statements.

Net Weight: 1 oz. (28.3g) or 2 oz (56.5g) or 4 oz. (113g) or 6 oz. (170g) or 8 oz. (226g)

BACK PANEL

Directions for Use:

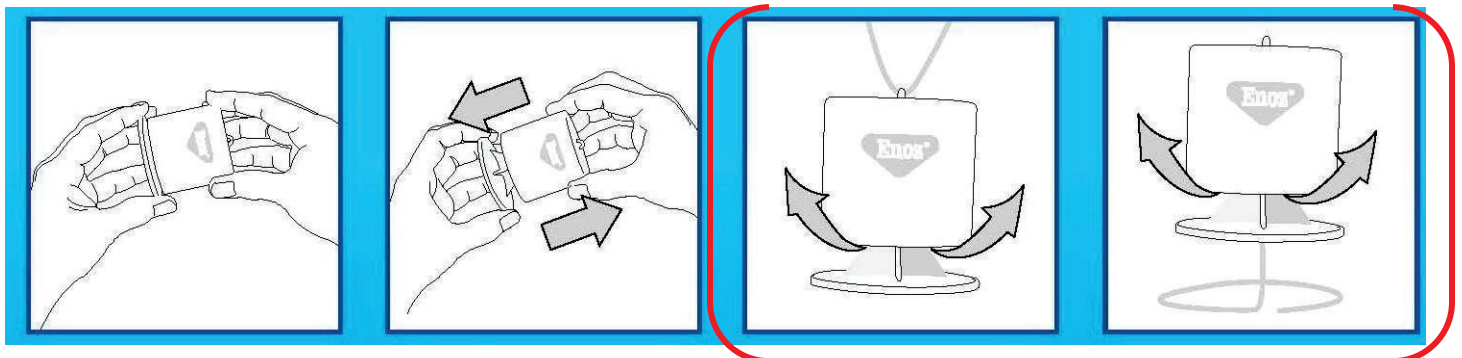
It is a violation of Federal law to use this product in a manner inconsistent with its labeling.

IMPORTANT: Keep out of reach of children and pets. Do not place in areas accessible to children and pets.

ACTIVATING STATION

Remove ENOZ® Repellent Stations from package and place one hand on the top section of the station and the other hand on the bottom section.

To activate the station, pull the two sections away from each other until they click into position. Place stations or use optional wires to hang or stand the stations in areas consistent with the label use directions. [Wire hanger can be threaded through loop at top of station (Fig 3) or inserted into hole on bottom of station (Fig 4) to be staked into ground.] [Wire hanger not included.]



The station is now activated and ready for use. Repeat these steps for each station.

TO REPEL RABBITS, DEER, DOGS AND CATS AROUND ORNAMENTAL PLANTS

Use to reduce the frequency of visits by rabbits, deer, dogs and cats to ornamental plants. *For outdoor use only. If the product's smell persists inside living space after placement, either too much has been applied or applied too close to living spaces.*

Application Directions: At first sign of growth of roses, spring bulbs, flowers and other plants to be protected, place, hang or stake stations 4 to 8 ft. apart in and around plant area. Avoid contact with foliage or stems.

The proper treatment of large areas may require the use of additional packages of ENOZ® Repellent Stations. To insure protection of your plants, use a sufficient number of ENOZ® Repellent Stations.

Re-treatment: In order to maintain protection of your plants, replace repellent stations when empty or refill stations with ENOZ® Repellent Station refills. Hot weather and wind may necessitate more frequent replacement.

TO REPEL TREE SQUIRRELS AND BATS IN ATTICS AND WALL VOIDS

Use to repel tree squirrels and bats from attics and wall voids. *For indoor use only. If the product's smell persists inside living spaces after placement, either too much has been applied or applied too close to living spaces.*

Pre-Application Directions: Calculate the total number of cubic feet to be treated. Divide by 25 cubic feet to determine the number of 1 oz. stations needed.

Application Directions: Each single use ENOZ® Repellent Station can treat up to 25 cubic feet. The repellent stations in this package can treat up to [25 cubic feet] (for 1 oz. package) [50 cubic feet] (for 2 oz. package) [100 cubic feet] (for 4 oz. package) [150 cubic feet] (for 6 oz. package) [200 cubic feet] (for 8 oz. package). Place stations in accessible areas of attics and wall voids so that they can be easily removed if the odor becomes too strong. The proper treatment of larger areas may require the use of additional packages of ENOZ® Repellent Stations. Replace stations when empty or refill stations with ENOZ® Repellent Station refills. Remove stations when animals and their signs cease.

Post-Application Directions: Close all openings through which animals gain access to attic and wall voids (such as small crevices, around eaves, rafters, and around dormers) with strips of wood, metal or steel wool.

STORAGE AND DISPOSAL

Pesticide Storage: Store in the original container in a dry place inaccessible to children and pets.

Pesticide Disposal and Container Handling: Refillable container. Refill this container with Enoz Repellent Station Refills only. Do not use this container for any other purpose. **If empty:** Place in trash or offer for recycling if available. **If partly filled:** Call your local solid waste agency for disposal instructions. Never place unused product down any indoor or outdoor drain.

PRECAUTIONARY STATEMENTS

Hazards to Humans and Domestic Animals

WARNING. May be fatal if inhaled. Do not breathe dust or vapors. Harmful if swallowed and harmful if absorbed through skin. Causes moderate eye irritation. Avoid contact with skin, eyes, or clothing. Wash thoroughly with soap and water after handling and before eating, drinking, chewing gum, or using tobacco. Remove and wash contaminated clothing before use.

FIRST AID

If inhaled

- Move person to fresh air.
- If person is not breathing, call 911 or an ambulance, then give artificial respiration, preferably mouth-to-mouth if possible.
- Call a poison control center or doctor for treatment advice.

If swallowed

- Immediately call poison control center or doctor.
- Do not induce vomiting unless told to do so by a poison control center or doctor.
- Do not give any liquid to the person.
- Do not give anything by mouth to an unconscious person.

If on skin or clothing

- Take off contaminated clothing.
- Rinse skin immediately with plenty of water for 15-20 minutes.
- Call a poison control center or doctor for treatment advice.

If in eyes

- Hold eye open and rinse slowly and gently with water for 15-20 minutes. Remove contact lenses, if present, after the first 5 minutes, then continue rinsing.
- Call a poison control center or doctor for treatment advice.

HOT LINE NUMBER

Have the container or label with you when calling a poison control center or doctor, or going for treatment. You may also contact the National Pesticide Information Center (NPIC) at 1-800-858-7378 for emergency medical treatment information.

PHYSICAL OR CHEMICAL HAZARDS

Combustible. Do not use or store near heat or open flame.

ENVIRONMENTAL HAZARDS

This product is toxic to fish. Do not apply directly to water.

Not For Sale in the State of California.

*Money Back Guarantee – If you are not 100% satisfied with this product, Willert Home Products will refund the purchased price of this product. Please send your written request for a refund to the address on the back panel along with the original dated store receipt showing the price paid and the upc code from the package. Please allow 6-8 weeks for processing.

EPA Reg. No. 1475-160
EPA Est. No. 1475-WV-1

Willert Home Products
4044 Park Ave.
St. Louis, MO 63110 ©2021

Sub-Label #2

ENOZ® REPELLENT STATION REFILLS

FRONT PANEL

Optional Marketing Claims

1. Refills for Enoz Repellent Stations
2. Convenient Refills for Enoz Repellent Stations
3. Individually wrapped packets for refilling Enoz Repellent Stations
4. Each packet refills one Enoz Repellent Station
5. For Repelling Rabbits, Deer, Tree Squirrels, Bats, Dogs and Cats
6. Rabbit, Deer, Tree Squirrel, Bat, Dog and Cat Repellent
7. Repels Deer, Rabbits, Squirrels & Bats
8. Rabbit and Deer Repellent
9. Squirrel and Bat Repellent
10. No-touch
11. No [direct] contact with skin
12. No mess no guess!
13. Easy to Use
14. Contains x – 1 oz. Refills (x = count)
15. Contains x Refills (x = count)
16. Will not Wash Away
17. Weatherproof Won't Wash Away
18. Protect Your Plants. Create a No-Zone™.
19. No repellent contact with plants
20. 99.95% Naphthalene
21. Ready-to-Use
22. Each [refill][packet] contains [trusted] Enoz Old Fashioned Moth Balls
23. Trusted for Generations!

FRONT PANEL (continued)

ACTIVE INGREDIENT: Naphthalene.....99.95%
OTHER INGREDIENTS:00.05%
TOTAL:100.00%

**KEEP OUT OF REACH OF CHILDREN
WARNING**

See back panel for additional precautionary statements.

Net Weight: 16 oz. (453 g) or 24 oz. (680g) or 32 oz. (907g)

BACK PANEL**Directions for Use:**

It is a violation of Federal law to use this product in a manner inconsistent with its labeling.

IMPORTANT: Keep out of reach of children and pets. Do not place in areas accessible to children and pets.

REFILLING STATIONS

Use these packets to refill Enoz Repellent Stations only. Place one hand on the top section of the Enoz Repellent station and the other hand on the bottom section. Pull the two sections away from each other until they come apart. Place one refill packet in the station and then snap back together, making sure to line up the tabs on the inside of the station top with the tracks on the station bottom. Be sure station is in open position before use. *[graphic illustration]*

Place stations or use wires to hang or stand the stations in areas consistent with the label use directions. Wire hanger can be threaded through loop at top of station or inserted into hole on bottom of station to be staked into ground. *[graphic illustration]*

TO REPEL RABBITS, DEER, DOGS AND CATS AROUND ORNAMENTAL PLANTS

Use to reduce the frequency of visits by rabbits, deer, dogs and cats to ornamental plants. *For outdoor use only. If the product's smell persists inside living spaces after placement, either too much has been applied or applied too close to living spaces.*

Application Directions: At first sign of growth of roses, spring bulbs, flowers and other plants to be protected, place, hang or stake stations 4 to 8 ft. apart in and around plant area. Avoid contact with foliage or stems.

The proper treatment of large areas may require the use of additional packages of ENOZ® Repellent Stations. To insure protection of your plants, use a sufficient number of ENOZ® Repellent Stations.

Re-treatment: In order to maintain protection of your plants, replace repellent stations when empty or refill stations with Enoz Repellent Station refills. Hot weather and wind may necessitate more frequent replacement.

TO REPEL TREE SQUIRRELS AND BATS IN ATTICS AND WALL VOIDS

Use to repel tree squirrels and bats from attics and wall voids. *For indoor use only. If the product's smell persists inside living spaces after placement, either too much has been applied or applied too close to living spaces.*

Pre-Application Directions: Calculate the total number of cubic feet to be treated. Divide by 25 cubic feet to determine the number of 1 oz. stations needed.

Application Directions: Each single use ENOZ® Repellent Station can treat up to 25 cubic feet. The repellent station refills in this package can treat up to [400 cubic feet] (for 16 oz. package) [600 cubic feet] (for 24 oz. package) [800 cubic feet] (for 32 oz. package). Place stations in accessible areas of attics and wall voids so that they can be easily removed if the odor becomes too strong. The proper treatment of larger areas may require the use of additional packages of ENOZ® Repellent Stations. Replace stations when empty or refill stations with Enoz Repellent Station refills. Remove stations when animals and their signs cease.

Post-Application Directions: Close all openings through which animals gain access to attic and wall voids (such as small crevices, around eaves, rafters, and around dormers) with strips of wood, metal or steel wool.

STORAGE AND DISPOSAL

Pesticide Storage: Store in the original container in a dry place inaccessible to children and pets.

Pesticide Disposal and Container Handling: Non-refillable container. Do not reuse or refill this container. **If empty:** Place in trash or offer for recycling if available. **If partly filled:** Call your local solid waste agency for disposal instructions. Never place unused product down any indoor or outdoor drain.

PRECAUTIONARY STATEMENTS

Hazards to Humans and Domestic Animals

WARNING. May be fatal if inhaled. Do not breathe dust or vapors. Harmful if swallowed and harmful if absorbed through skin. Causes moderate eye irritation. Avoid contact with skin, eyes, or clothing. Wash thoroughly with soap and water after handling and before eating, drinking, chewing gum, or using tobacco. Remove and wash contaminated clothing before use.

FIRST AID**If inhaled**

- Move person to fresh air.
- If person is not breathing, call 911 or an ambulance, then give artificial respiration, preferably mouth-to-mouth if possible.
- Call a poison control center or doctor for treatment advice.

If swallowed

- Immediately call poison control center or doctor.
- Do not induce vomiting unless told to do so by a poison control center or doctor.
- Do not give any liquid to the person.
- Do not give anything by mouth to an unconscious person.

If on skin or clothing

- Take off contaminated clothing.
- Rinse skin immediately with plenty of water for 15-20 minutes.
- Call a poison control center or doctor for treatment advice.

If in eyes

- Hold eye open and rinse slowly and gently with water for 15-20 minutes. Remove contact lenses, if present, after the first 5 minutes, then continue rinsing.
- Call a poison control center or doctor for treatment advice.

HOT LINE NUMBER

Have the container or label with you when calling a poison control center or doctor, or going for treatment. You may also contact the National Pesticide Information Center (NPIC) at 1-800-858-7378 for emergency medical treatment information.

PHYSICAL OR CHEMICAL HAZARDS

Combustible. Do not use or store near heat or open flame.

ENVIRONMENTAL HAZARDS

This product is toxic to fish. Do not apply directly to water.

Not For Sale in the State of California.

EPA Reg. No. 1475-160
EPA Est. No. 1475-WV-1

Willert Home Products
4044 Park Ave.
St. Louis, MO 63110

©2021