



UNITED STATES ENVIRONMENTAL PROTECTION AGENCY  
WASHINGTON, DC 20460

OFFICE OF CHEMICAL SAFETY  
AND POLLUTION PREVENTION

July 27 2015

Ms. Kathie J. Tryson  
Director, Regulatory Affairs  
Willert Home Products  
4044 Park Avenue  
St. Louis, MO 63110

Subject: Notification per PRN 98-10 – Add Two Alternate Brand Names  
Product Name: Enoz Repellent Stations  
EPA Registration Number: 1475-160  
Application Date: June 10, 2015  
Decision Number: 506971

Dear Ms. Tryson:

The Agency is in receipt of your Application for Pesticide Notification under Pesticide Registration Notice (PRN) 98-10 for the above referenced product. The Registration Division (RD) has conducted a review of this request for its applicability under PRN 98-10 and finds that the action requested falls within the scope of PRN 98-10.

The label submitted with the application has been stamped “Notification” and will be placed in our records. The alternate brand names Enoz No Zone and Enoz No Zone Refills has been added to the product record.

If you have any questions, you may contact Melody Banks at 703 305 5413 or via email at [Banks.Melody@epa.gov](mailto:Banks.Melody@epa.gov).

Sincerely,

A handwritten signature in cursive that reads "Melody Banks for".

Mark Suarez, Product Manager 7  
Invertebrate & Vertebrate Branch 3  
Registration Division (7505P)  
Office of Pesticide Programs

**NOTIFICATION**

1475-160

The applicant has certified that no changes, other than those reported to the Agency have been made to the labeling. The Agency acknowledges this notification by letter dated:

07/27/2015

**MASTER LABEL**

**ENOZ® REPELLENT STATIONS  
EPA Reg. No. 1475-160**

**This Master Label contains two (2) sub-labels for the following products:**

**Enoz Repellent Stations:**

**Contains 4, 6, or 8 one-ounce repellent stations**

**Enoz Repellent Station Refills**

**Contains 16, 24, or 32 one-ounce packets to refill repellent stations**

**Sub-Label #1****ENOZ® REPELLENT STATIONS****Alternate Brand Names**

- Enoz No Zone
- Enoz No Zone Refills

**FRONT PANEL****Optional Marketing Claims**

1. New (to be used for six months after first marketing of product)
2. For Repelling Rabbits, Deer, Tree Squirrels, Bats, Dogs and Cats
3. Rabbit, Deer, Tree Squirrel, Bat, Dog and Cat Repellent
4. Rabbit and Deer Repellent
5. Squirrel and Bat Repellent
6. Repels Squirrels and Bats from Attics.
7. Repels Deer, Rabbits, Squirrels & Bats
8. Repel Deer and Rabbits from Hostas, Gardens, Flower Beds & Potted Plants
9. Durable
10. Pre-filled
11. Repellent Stations
12. No-touch
13. No handling
14. No [direct] contact with skin
15. No mess no guess!
16. Pre-filled for optimum effectiveness
17. Pre-filled for efficiency
18. No-touch pre-filled stations
19. Refillable with Enoz Repellent Station Refills
20. Refillable
21. Easy to Use
22. Contains x – 1 oz. Stations (x = count)
23. Contains x Stations (x = count)
24. Will not Wash Away
25. Weatherproof Stations protect repellent for ongoing effectiveness
26. Weatherproof Won't Wash Away
27. Weatherproof, camouflaged stations seamlessly blend in with the environment for invisible protection that won't wash away.
28. Protect Your Plants. Create a No-Zone™.
29. Patent Pending Design
30. Includes Stakes to Hang or Place Stations
31. No repellent contact with plants

- 32. 99.95% Naphthalene
- 33. Ready-to-Use
- 34. [4][6][8] Stations Pre-filled with Trusted Enoz Old Fashioned Moth Balls
- 35. Trusted for Generations!
- 36. Protect Your Plants. Money Back Guarantee\*

**FRONT PANEL (continued)**

ACTIVE INGREDIENT: Naphthalene.....	99.95%
OTHER INGREDIENTS: .....	00.05%
TOTAL: .....	100.00%

**KEEP OUT OF REACH OF CHILDREN  
WARNING**

See back panel for additional precautionary statements.

Net Weight: 4 oz. (113g) or 6 oz. (170g) or 8 oz. (226g)

**BACK PANEL**

**Directions for Use:**

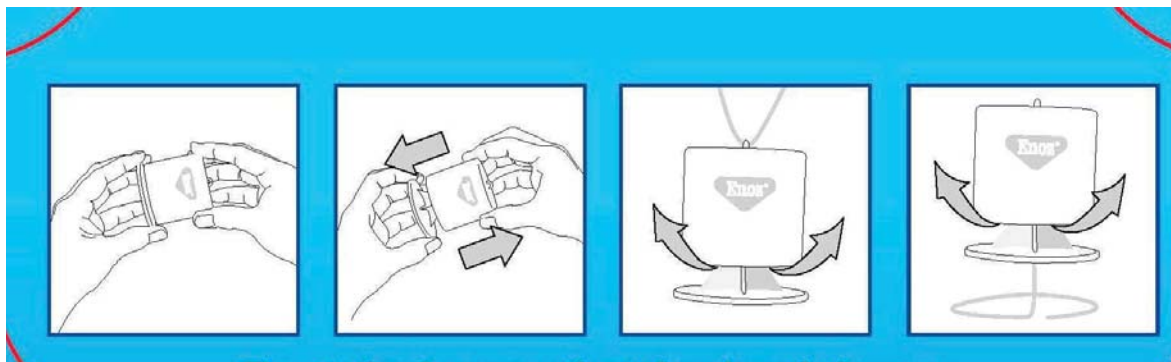
It is a violation of Federal law to use this product in a manner inconsistent with its labeling.

**IMPORTANT: Keep out of reach of children. Do not place in areas accessible to children.**

**ACTIVATING STATION**

Remove ENOZ® Repellent Stations from package and place one hand on the top section of the station and the other hand on the bottom section.

To activate the station, pull the two sections away from each other until they click into position. Place stations or use optional wires to hang or stand the stations in areas consistent with the label use directions. Wire hanger can be threaded through loop at top of station (Fig 3) or inserted into hole on bottom of station (Fig 4) to be staked into ground.



The station is now activated and ready for use. Repeat these steps for each station.

### **TO REPEL RABBITS, DEER, DOGS AND CATS AROUND ORNAMENTAL PLANTS**

Use to reduce the frequency of visits by rabbits, deer, dogs and cats to ornamental plants. *For outdoor use only.*

**Application Directions:** At first sign of growth of roses, spring bulbs, flowers and other plants to be protected, place, hang or stake stations 4 to 8 ft. apart in and around plant area. Avoid contact with foliage or stems.

The proper treatment of large areas may require the use of additional packages of ENOZ® Repellent Stations. To insure protection of your plants, use a sufficient number of ENOZ® Repellent Stations.

**Re-treatment:** In order to maintain protection of your plants, replace repellent stations when empty or refill stations with Enoz Repellent Station refills. Hot weather and wind may necessitate more frequent replacement.

### **TO REPEL TREE SQUIRRELS AND BATS IN ATTICS AND WALL VOIDS**

Use to repel tree squirrels and bats from attics and wall voids. *For indoor use only.*

**Pre-Application Directions:** Calculate the total number of cubic feet to be treated. Divide by 25 cubic feet to determine the number of 1 oz. stations needed.

**Application Directions:** Each single use ENOZ® Repellent Station can treat up to 25 cubic feet. The repellent stations in this package can treat up to [100 cubic feet] (for 4 oz. package) [150 cubic feet] (for 6 oz. package) [200 cubic feet] (for 8 oz. package). Place stations in accessible areas of attics and wall voids so that they can be easily removed if the odor becomes too strong. The proper treatment of larger areas may require the use of additional packages of ENOZ® Repellent Stations. Replace stations when empty or refill stations with Enoz Repellent Station refills. Remove stations when animals and their signs cease.

**Post-Application Directions:** Close all openings through which animals gain access to attic and wall voids (such as small crevices, around eaves, rafters, and around dormers) with strips of wood, metal or steel wool.

### **STORAGE AND DISPOSAL**

**Pesticide Storage:** Store in the original container in a dry place inaccessible to children and pets.

**Pesticide Disposal and Container Handling:** Refillable container. Refill this container with Enoz Repellent Station Refills only. Do not use this container for any other purpose. **If empty:** Place in trash or offer for recycling if available. **If partly filled:** Call your local solid waste agency for disposal instructions. Never place unused product down any indoor or outdoor drain.

## PRECAUTIONARY STATEMENTS

### Hazards to Humans and Domestic Animals

**WARNING.** May be fatal if inhaled. Do not breathe dust or vapors. Harmful if swallowed and harmful if absorbed through skin. Causes moderate eye irritation. Avoid contact with skin, eyes, or clothing. Wash thoroughly with soap and water after handling and before eating, drinking, chewing gum, or using tobacco. Remove and wash contaminated clothing before use.

### FIRST AID

#### If inhaled

- Move person to fresh air.
- If person is not breathing, call 911 or an ambulance, then give artificial respiration, preferably mouth-to-mouth if possible.
- Call a poison control center or doctor for treatment advice.

#### If swallowed

- Immediately call poison control center or doctor.
- Do not induce vomiting unless told to do so by a poison control center or doctor.
- Do not give any liquid to the person.
- Do not give anything by mouth to an unconscious person.

#### If on skin or clothing

- Take off contaminated clothing.
- Rinse skin immediately with plenty of water for 15-20 minutes.
- Call a poison control center or doctor for treatment advice.

#### If in eyes

- Hold eye open and rinse slowly and gently with water for 15-20 minutes. Remove contact lenses, if present, after the first 5 minutes, then continue rinsing.
- Call a poison control center or doctor for treatment advice.

### HOT LINE NUMBER

Have the container or label with you when calling a poison control center or doctor, or going for treatment. You may also contact the National Pesticide Information Center (NPIC) at 1-800-858-7378 for emergency medical treatment information.

### PHYSICAL OR CHEMICAL HAZARDS

Combustible. Do not use or store near heat or open flame.

### ENVIRONMENTAL HAZARDS

This product is toxic to fish. Do not apply directly to water.

**Not For Sale in the State of California.**

\*Money Back Guarantee – If you are not 100% satisfied with this product, Willert Home Products will refund the purchased price of this product. Please send your written request for a refund to the address on the back panel along with the original dated store receipt showing the price paid and the upc code from the package. Please allow 6-8 weeks for processing.

EPA Reg. No. 1475-160  
EPA Est. No. 1475-MO-1

Willert Home Products  
4044 Park Ave.  
St. Louis, MO 63110 ©2015

### Sub-Label #2

## **ENOZ® REPELLENT STATION REFILLS**

### FRONT PANEL

#### Optional Marketing Claims

1. New (to be used for six months after first marketing of product)
2. Refills for Enoz Repellent Stations
3. Convenient Refills for Enoz Repellent Stations
4. Individually wrapped packets for refilling Enoz Repellent Stations
5. Each packet refills one Enoz Repellent Station
6. For Repelling Rabbits, Deer, Tree Squirrels, Bats, Dogs and Cats
7. Rabbit, Deer, Tree Squirrel, Bat, Dog and Cat Repellent
8. Repels Deer, Rabbits, Squirrels & Bats
9. Rabbit and Deer Repellent
10. Squirrel and Bat Repellent
11. No-touch
12. No [direct] contact with skin
13. No mess no guess!
14. Easy to Use
15. Contains x – 1 oz. Refills (x = count)
16. Contains x Refills (x = count)
17. Will not Wash Away
18. Weatherproof Won't Wash Away
19. Protect Your Plants. Create a No-Zone™.
20. No repellent contact with plants
21. 99.95% Naphthalene
22. Ready-to-Use
23. Each [refill][packet] contains [trusted] Enoz Old Fashioned Moth Balls
24. Trusted for Generations!

**FRONT PANEL (continued)**

ACTIVE INGREDIENT: Naphthalene.....99.95%  
 OTHER INGREDIENTS: .....00.05%  
 TOTAL: .....100.00%

**KEEP OUT OF REACH OF CHILDREN  
 WARNING**

See back panel for additional precautionary statements.

Net Weight: 16 oz. (453 g) or 24 oz. (680g) or 32 oz. (907g)

**BACK PANEL**

**Directions for Use:**

It is a violation of Federal law to use this product in a manner inconsistent with its labeling.

**IMPORTANT: Keep out of reach of children. Do not place in areas accessible to children.**

**REFILLING STATIONS**

Use these packets to refill Enoz Repellent Stations only. Place one hand on the top section of the Enoz Repellent station and the other hand on the bottom section. Pull the two sections away from each other until they come apart. Place one refill packet in the station and then snap back together, making sure to line up the tabs on the inside of the station top with the tracks on the station bottom. Be sure station is in open position before use. *[graphic illustration]*

Place stations or use wires to hang or stand the stations in areas consistent with the label use directions. Wire hanger can be threaded through loop at top of station or inserted into hole on bottom of station to be staked into ground. *[graphic illustration]*

**TO REPEL RABBITS, DEER, DOGS AND CATS AROUND ORNAMENTAL PLANTS**

Use to reduce the frequency of visits by rabbits, deer, dogs and cats to ornamental plants. *For outdoor use only.*



**Application Directions:** At first sign of growth of roses, spring bulbs, flowers and other plants to be protected, place, hang or stake stations 4 to 8 ft. apart in and around plant area. Avoid contact with foliage or stems.

The proper treatment of large areas may require the use of additional packages of ENOZ® Repellent Stations. To insure protection of your plants, use a sufficient number of ENOZ® Repellent Stations.

**Re-treatment:** In order to maintain protection of your plants, replace repellent stations when empty or refill stations with Enoz Repellent Station refills. Hot weather and wind may necessitate more frequent replacement.

## TO REPEL TREE SQUIRRELS AND BATS IN ATTICS AND WALL VOIDS

Use to repel tree squirrels and bats from attics and wall voids. *For indoor use only.*

**Pre-Application Directions:** Calculate the total number of cubic feet to be treated. Divide by 25 cubic feet to determine the number of 1 oz. stations needed.

**Application Directions:** Each single use ENOZ® Repellent Station can treat up to 25 cubic feet. The repellent station refills in this package can treat up to [400 cubic feet] (for 16 oz. package) [600 cubic feet] (for 24 oz. package) [800 cubic feet] (for 32 oz. package). Place stations in accessible areas of attics and wall voids so that they can be easily removed if the odor becomes too strong. The proper treatment of larger areas may require the use of additional packages of ENOZ® Repellent Stations. Replace stations when empty or refill stations with Enoz Repellent Station refills. Remove stations when animals and their signs cease.

**Post-Application Directions:** Close all openings through which animals gain access to attic and wall voids (such as small crevices, around eaves, rafters, and around dormers) with strips of wood, metal or steel wool.

## STORAGE AND DISPOSAL

**Pesticide Storage:** Store in the original container in a dry place inaccessible to children and pets.

**Pesticide Disposal and Container Handling:** Non-refillable container. Do not reuse or refill this container. **If empty:** Place in trash or offer for recycling if available. **If partly filled:** Call your local solid waste agency for disposal instructions. Never place unused product down any indoor or outdoor drain.

## PRECAUTIONARY STATEMENTS

### Hazards to Humans and Domestic Animals

**WARNING.** May be fatal if inhaled. Do not breathe dust or vapors. Harmful if swallowed and harmful if absorbed through skin. Causes moderate eye irritation. Avoid contact with skin, eyes, or clothing. Wash thoroughly with soap and water after handling and before eating, drinking, chewing gum, or using tobacco. Remove and wash contaminated clothing before use.

**FIRST AID****If inhaled**

- Move person to fresh air.
- If person is not breathing, call 911 or an ambulance, then give artificial respiration, preferably mouth-to-mouth if possible.
- Call a poison control center or doctor for treatment advice.

**If swallowed**

- Immediately call poison control center or doctor.
- Do not induce vomiting unless told to do so by a poison control center or doctor.
- Do not give any liquid to the person.
- Do not give anything by mouth to an unconscious person.

**If on skin or clothing**

- Take off contaminated clothing.
- Rinse skin immediately with plenty of water for 15-20 minutes.
- Call a poison control center or doctor for treatment advice.

**If in eyes**

- Hold eye open and rinse slowly and gently with water for 15-20 minutes. Remove contact lenses, if present, after the first 5 minutes, then continue rinsing.
- Call a poison control center or doctor for treatment advice.

**HOT LINE NUMBER**

Have the container or label with you when calling a poison control center or doctor, or going for treatment. You may also contact the National Pesticide Information Center (NPIC) at 1-800-858-7378 for emergency medical treatment information.

**PHYSICAL OR CHEMICAL HAZARDS**

Combustible. Do not use or store near heat or open flame.

**ENVIRONMENTAL HAZARDS**

This product is toxic to fish. Do not apply directly to water.

**Not For Sale in the State of California.**

EPA Reg. No. 1475-160  
EPA Est. No. 1475-MO-1

Willert Home Products  
4044 Park Ave.  
St. Louis, MO 63110

©2015