



UNITED STATES ENVIRONMENTAL PROTECTION AGENCY  
WASHINGTON, DC 20460

OFFICE OF CHEMICAL SAFETY  
AND POLLUTION PREVENTION

March 20, 2018

Ms. Kelly Webster  
Director, Regulatory Affairs  
Willert Home Products  
4044 Park Avenue  
St. Louis, MO 63110

Subject: Label Amendment – Change in Packaging, Directions for Use  
and Optional Marketing Claims  
Product Name: ENOZ Moth Bar  
EPA Registration Number: 1475-113  
Application Date: November 20, 2017  
Decision Number: 536333

Dear: Ms. Webster:

The amended label referred to above, submitted in connection with registration under the Federal Insecticide, Fungicide and Rodenticide Act, as amended, is acceptable. This approval does not affect any conditions that were previously imposed on this registration. You continue to be subject to existing conditions on your registration and any deadlines connected with them.

A stamped copy of your labeling is enclosed for your records. This labeling supersedes all previously accepted labeling. You must submit one copy of the final printed labeling before you release the product for shipment with the new labeling. In accordance with 40 CFR 152.130(c), you may distribute or sell this product under the previously approved labeling for 18 months from the date of this letter. After 18 months, you may only distribute or sell this product if it bears this new revised labeling or subsequently approved labeling. "To distribute or sell" is defined under FIFRA section 2(gg) and its implementing regulation at 40 CFR 152.3.

Should you wish to add/retain a reference to the company's website on your label, then please be aware that the website becomes labeling under the Federal Insecticide Fungicide and Rodenticide Act and is subject to review by the Agency. If the website is false or misleading, the product would be misbranded and unlawful to sell or distribute under FIFRA section 12(a)(1)(E). 40 CFR 156.10(a)(5) list examples of statements EPA may consider false or misleading. In addition, regardless of whether a website is referenced on your product's label, claims made on the website may not substantially differ from those claims approved through the registration process. Therefore, should the Agency find or if it is brought to our attention that a website contains false or misleading statements or claims substantially differing from the EPA approved registration, the website will be referred to the EPA's Office of Enforcement and Compliance.

Page 2 of 2  
EPA Reg. No. 1475-113  
Decision No. 536333

Your release for shipment of the product constitutes acceptance of these conditions. If these conditions are not complied with, the registration will be subject to cancellation in accordance with FIFRA section 6. If you have any questions, please contact Melody Banks by phone at (703) 305-5413, or via email at [Banks.Melody@epa.gov](mailto:Banks.Melody@epa.gov).

Sincerely,

A handwritten signature in blue ink, appearing to read "Gene Benbow".

Gene Benbow, Product Manager 7  
Invertebrate & Vertebrate Branch 3  
Registration Division (7505P)  
Office of Pesticide Programs

**ACCEPTED**

03/20/2018

Under the Federal Insecticide, Fungicide and Rodenticide Act as amended, for the pesticide registered under

EPA Reg. No. 1475-113

**MASTER LABEL - ENOZ® MOTH BAR**

**This Master Label contains Nine (9) sub-labels**

- A. **ENOZ® Moth Bar**  
Net Weight 11 oz. (311g)
- B. **ENOZ® Moth Bar**  
Net Weight 6 oz. (170g)
- C. 1.) **ENOZ® Plastic Hang-Up Moth Case**  
2.) **ENOZ® Moth & Deodorant Cakes Perfumed Refills for Hang-Up Plastic Case**  
[Contains] 2 – 2 oz. cakes, Total Net Wt. 4 oz. (113g)  
[Contains] 3 – 2 oz. cakes, Total Net Wt. 6 oz. (170g)  
[Contains] 4 – 2 oz. cakes, Total Net Wt. 8 oz. (226g)
- D. **ENOZ® Moth Cake**  
Net Weight 4 oz. (113g)
- E. **ENOZ® Moth Killer**  
Net Weight 9 oz. (255g)
- F. **ENOZ® Moth Blox**  
Net Weight 9.5 oz. (269g)
- G. **ENOZ® Moth Bar with Peel-Off Label**  
Net Weight 6 oz. (170g)
- H. **ENOZ® Moth Bar Refill**  
Net Weight 6 oz. (170g)
- I. **REEFER-GALLER® MOTH CAKE**  
Net Weight 6 oz. (170g)

**SUBLABEL A**

**[FRONT LABEL]**

**Enoz® Moth Bar**

**[Cedar Scented] [Lavender Scented] [Linen Scented]**

**Protects Clothing**

Kills Clothes Moths and Carpet Beetles and Their Eggs and Larvae,

Aids in Mildew Control, When Used In Air-Tight Containers

This product can treat up to 34.4 cu. ft.

|   |               |
|---|---------------|
| ACTIVE INGREDIENT: p-Dichlorobenzene..... | 99.68%        |
| OTHER INGREDIENTS:.....                   | <u>00.32%</u> |
| TOTAL:.....                               | 100.00%       |

KEEP OUT OF REACH OF CHILDREN

**WARNING**

See back panel for additional precautionary statements.

Net Weight: 11 oz. (311g)

**[BACK LABEL]**

**DIRECTIONS FOR USE**

It is a violation of Federal law to use this product in a manner inconsistent with its labeling.

**IMPORTANT: Keep out of reach of children. Do not place in areas accessible to children.**

**Use Restrictions:** This product can treat up to 34.4 cubic feet. Kills clothes moths and carpet beetles and their eggs and larvae in clean, airtight containers, such as chests, trunks, and garment bags. Do not use dry cleaning bags, garbage bags or other containers that allow vapors to escape into occupied rooms. This product can damage some plastics, use only in polyethylene or polypropylene containers. Do not mix p-dichlorobenzene or use it together with other moth preventive chemicals.

**Pre-Application Directions:** For all fabric types: Dry clean, wash or brush articles to be protected prior to storage.

**Application Directions:** Unwrap the bar and while holding bar by the cellophane wrapper hang at the top of the storage container. The vapors work downward. Keep product in airtight space for a minimum of 7 days. When bar has dissipated replace with new unit. Odor quickly vanishes when articles are aired.

**Retreatment:** Since moths are active all year, replenish air-tight containers and bags 2 times a year.

**STORAGE AND DISPOSAL**

**Pesticide Storage:** Store in the original container, in a dry place inaccessible to children and pets. **Pesticide Disposal and Container Handling:** Nonrefillable container. Do not reuse or refill this container. **If empty:** Place in trash or offer for recycling if available. **If partly filled:** Call your local solid waste agency for disposal instructions. Never place unused product down any indoor or outdoor drain.

**PRECAUTIONARY STATEMENTS**

**HAZARDS TO HUMANS AND DOMESTIC ANIMALS**

**WARNING.** Causes substantial but temporary eye injury. Wear protective eyewear. Harmful if swallowed. Harmful if inhaled. Do not get in eyes or on clothing. Avoid contact with skin. Avoid breathing dust. Wash thoroughly with soap and water after handling and before eating, drinking, chewing gum, or using tobacco or using the toilet. Remove and wash contaminated clothing before reuse.

**NOTICE:** This product contains a chemical known to the State of California to cause cancer.

| <b>FIRST AID</b>  |  |
|---|--|
| If in eyes  | <ul style="list-style-type: none"> <li>• Hold eye open and rinse slowly and gently with water for 15-20 minutes.</li> <li>• Remove contact lenses, if present, after the first 5 minutes, then continue rinsing eye.</li> <li>• Call a poison control center or doctor for treatment advice.</li> </ul>  |
| If swallowed  | <ul style="list-style-type: none"> <li>• Call poison control center or doctor immediately for treatment advice.</li> <li>• Have person sip a glass of water if able to swallow.</li> <li>• Do not induce vomiting unless told to do so by a poison control center or doctor.</li> <li>• Do not give anything by mouth to an unconscious person.</li> </ul> |
| If on skin or clothing  | <ul style="list-style-type: none"> <li>• Take off contaminated clothing.</li> <li>• Rinse skin immediately with plenty of water for 15-20 minutes.</li> <li>• Call a poison control center or doctor for treatment advice.</li> </ul>  |
| If inhaled  | <ul style="list-style-type: none"> <li>• Move person to fresh air.</li> <li>• If person is not breathing, call 911 or an ambulance, then give artificial respiration, preferably mouth-to-mouth if possible.</li> <li>• Call a poison control center or doctor for treatment advice.</li> </ul>  |
| <b>HOT LINE NUMBER</b>  |  |
| Have the container or label with you when calling a poison control center or doctor, or going for treatment. You may also contact the National Pesticide Information Center (NPIC) at 1-800-858-7378 for emergency medical treatment information. |  |
| <b>NOTE TO PHYSICIAN</b>  |  |
| Probable mucosal damage may contraindicate the use of gastric lavage.   |  |

**PHYSICAL OR CHEMICAL HAZARDS:** Combustible. Do not use or store near heat or open flame.

EPA Reg. No. 1475-113  
 EPA Est. No. 1475-MO-1  
 ©2017

Willert Home Products  
 4044 Park Ave.  
 St. Louis, MO 63110

**SUBLABEL B**

**[FRONT LABEL] 1.) ENOZ® Moth Bar**

**[Cedar Scented] [Lavender Scented] [Linen Scented] [Linen Scent]**

Marketing Claims:

- Protects Clothing
- Kills Clothes Moths and Carpet Beetles and Their Eggs and Larvae,
- Aids in Mildew Control, When Used in Air-Tight Containers
- This Product can treat up to 18.8 cu. ft.
- New! Easy Open Container (for use for 6 months)
- Easy Open Container
- Easy to Open
- Now Easier to Open
- No Direct Contact with Skin
- No mess
- No Clinging Odor
- Now Refillable (for use for 6 months)
- Refillable [Container]
- Refills available [[at] [visit] [shop.willert.com](http://shop.willert.com)]
- For Use in Closets, Wardrobes and Garment Bags
- For Hanging Garments

ACTIVE INGREDIENT: p-Dichlorobenzene.....99.68%  
 OTHER INGREDIENTS:.....00.32%  
 TOTAL:.....100.00%

KEEP OUT OF REACH OF CHILDREN

**WARNING**

See back panel for additional precautionary statements.

Net Weight: 6 oz. (170g)

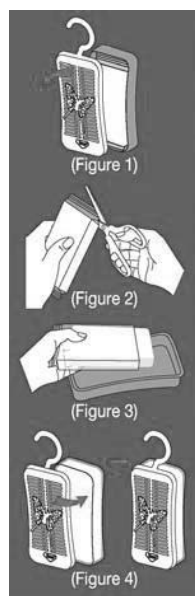
### DIRECTIONS FOR USE

It is a violation of Federal law to use this product in a manner inconsistent with its labeling.

**IMPORTANT: Keep out of reach of children. Do not place in areas accessible to children.**

**Use Restrictions:** This product can treat up to 18.8 cubic feet. Kills clothes moths and carpet beetles and their eggs and larvae in clean, airtight containers, such as chests, trunks, and garment bags. Do not use dry cleaning bags, garbage bags or other containers that allow vapors to escape into occupied rooms. This product can damage some plastics, use only in polyethylene or polypropylene containers. Do not mix p-dichlorobenzene or use it together with other moth preventive chemicals.

**Pre-Application Directions:** For all fabric types: Dry clean, wash or brush articles to be protected prior to storage. Prevents moth infestation regardless of fabric type.



**Application Directions:** Remove lid to open [plastic case] [container] (Figure 1). Cut Open Pouch (Figure 2). While holding bar by wrapper, transfer into the plastic [case][container] (Figure 3). Replace lid. (Figure 4). Place the filled plastic case at the top of the storage container. The vapors work downward. Keep product in airtight space for a minimum of 7 days. When product has dissipated, replace with new unit or refill this container with ENOZ Moth Bar Refills. Odor quickly vanishes when articles are aired.

**Retreatment:** Since moths are active all year, replenish air-tight containers and bags 2 times a year.

### STORAGE AND DISPOSAL

**Pesticide Storage:** Store in the original container, in a dry place inaccessible to children and pets. **Pesticide Disposal and Container Handling: Nonrefillable container.** Do not reuse or refill this container except as allowed in the directions for use. **If empty:** Place in trash or offer for recycling if available. **If partly filled:** Call your local solid waste agency for disposal instructions. Never place unused product down any indoor or outdoor drain.

**PRECAUTIONARY STATEMENTS**

**HAZARDS TO HUMANS AND DOMESTIC ANIMALS**

**WARNING.** Causes substantial but temporary eye injury. Wear protective eyewear. Harmful if swallowed. Harmful if inhaled. Do not get in eyes or on clothing. Avoid contact with skin. Avoid breathing dust. Wash thoroughly with soap and water after handling and before eating, drinking, chewing gum, or using tobacco or using the toilet. Remove and wash contaminated clothing before reuse.

**NOTICE:** This product contains a chemical known to the State of California to cause cancer.

| FIRST AID   |  |
|---|--|
| If in eyes  | <ul style="list-style-type: none"> <li>• Hold eye open and rinse slowly and gently with water for 15-20 minutes.</li> <li>• Remove contact lenses, if present, after the first 5 minutes, then continue rinsing eye.</li> <li>• Call a poison control center or doctor for treatment advice.</li> </ul>  |
| If swallowed  | <ul style="list-style-type: none"> <li>• Call poison control center or doctor immediately for treatment advice.</li> <li>• Have person sip a glass of water if able to swallow.</li> <li>• Do not induce vomiting unless told to do so by a poison control center or doctor.</li> <li>• Do not give anything by mouth to an unconscious person.</li> </ul> |
| If on skin or clothing  | <ul style="list-style-type: none"> <li>• Take off contaminated clothing.</li> <li>• Rinse skin immediately with plenty of water for 15-20 minutes.</li> <li>• Call a poison control center or doctor for treatment advice.</li> </ul>  |
| If inhaled  | <ul style="list-style-type: none"> <li>• Move person to fresh air.</li> <li>• If person is not breathing, call 911 or an ambulance, then give artificial respiration, preferably mouth-to-mouth if possible.</li> <li>• Call a poison control center or doctor for treatment advice.</li> </ul>  |
| HOT LINE NUMBER   |  |
| Have the container or label with you when calling a poison control center or doctor, or going for treatment. You may also contact the National Pesticide Information Center (NPIC) at 1-800-858-7378 for emergency medical treatment information. |  |
| NOTE TO PHYSICIAN   |  |
| Probable mucosal damage may contraindicate the use of gastric lavage.   |  |

**PHYSICAL OR CHEMICAL HAZARDS:** Combustible. Do not use or store near heat or open flame.

EPA Reg. No. 1475-113  
 EPA Est. No. 1475-MO-1, 88559-CHN-1  
 ©2017

Willert Home Products  
 4044 Park Ave.  
 St. Louis, MO 63110



**SUBLABEL C**

**[FRONT LABEL]**

- 1.) ENOZ® Plastic Hang-Up Moth Case**
- 2.) ENOZ® Moth & Deodorant Cakes Perfumed Refills for Hang-Up Plastic Case**

**[Cedar Scented] [Lavender Scented] [Linen Scented]**

**Protects Clothing**

Kills Clothes Moths and Carpet Beetles and Their Eggs and Larvae,

Aids in Mildew Control, When Used In Air-Tight Containers

[for 4 oz. size] This product can treat up to 12.5 cu. ft.

[for 6 oz. size] This product can treat up to 18.8 cu. ft.

[for 8 oz. size] This product can treat up to 24.8 cu. ft.

|   |         |
|---|---------|
| ACTIVE INGREDIENT: p-Dichlorobenzene..... | 99.68%  |
| OTHER INGREDIENTS:.....                   | 00.32%  |
| TOTAL:.....                               | 100.00% |

KEEP OUT OF REACH OF CHILDREN

**WARNING**

See back panel for additional precautionary statements.

[Contains] Two 2 oz. Cakes, Total Net Wt. 4 oz. (113g)

[Contains] Two 3 oz. Cakes, Total Net Wt. 6 oz. (170g)

[Contains] Three 2 oz. Cakes, Total Net Wt. 6 oz. (170g)

[Contains] Four 2 oz. Cakes, Total Net Wt. 8 oz. (226g)

**BACK LABEL:**

**DIRECTIONS FOR USE**

It is a violation of Federal law to use this product in a manner inconsistent with its labeling.

**IMPORTANT: Keep out of reach of children. Do not place in areas accessible to children.**

**Use Restrictions:** Each cake can treat up to 6.3 cubic feet. Kills clothes moths and carpet beetles and their eggs and larvae in clean, airtight containers, such as chests, trunks, and garment bags. Do not use dry cleaning bags, garbage bags or other containers that allow vapors to escape into occupied rooms. This product can damage some plastics, use only in polyethylene or polypropylene containers. Do not mix p-dichlorobenzene or use it together with other moth preventive chemicals.

**Pre-Application Directions:** For all fabric types: Dry clean, wash or brush articles to be protected prior to storage.

**Application Directions:** Open plastic case. Unwrap each cake, and while holding each cake by the cellophane wrapper, transfer back into the plastic case. Place the filled plastic case at the top of the storage container. The vapors work downward. Keep product in airtight space for a minimum of 7 days. When cakes have dissipated replace with new unit. Odor quickly vanishes when articles are aired.

**Retreatment:** Since moths are active all year, replenish air-tight containers and bags 2 times a year. [HANDY 3-IN-1 PACKS OF PERFUMED REFILLS CAKES ARE AVAILABLE.]

**STORAGE AND DISPOSAL**

**Pesticide Storage:** Store in the original container, in a dry place inaccessible to children and pets. **Pesticide Disposal and Container Handling:** Nonrefillable container. Do not reuse or refill this container. **If empty:** Place in trash or offer for recycling if available. **If partly filled:** Call your local solid waste agency for disposal instructions. Never place unused product down any indoor or outdoor drain.

**PRECAUTIONARY STATEMENTS**

**HAZARDS TO HUMANS AND DOMESTIC ANIMALS**

**WARNING.** Causes substantial but temporary eye injury. Wear protective eyewear. Harmful if swallowed. Harmful if inhaled. Do not get in eyes or on clothing. Avoid contact with skin. Avoid breathing dust. Wash thoroughly with soap and water after handling and before eating, drinking, chewing gum, or using tobacco or using the toilet. Remove and wash contaminated clothing before reuse.

NOTICE: This product contains a chemical known to the State of California to cause cancer.

| FIRST AID   |  |
|---|--|
| If in eyes  | <ul style="list-style-type: none"> <li>• Hold eye open and rinse slowly and gently with water for 15-20 minutes.</li> <li>• Remove contact lenses, if present, after the first 5 minutes, then continue rinsing eye.</li> <li>• Call a poison control center or doctor for treatment advice.</li> </ul>  |
| If swallowed  | <ul style="list-style-type: none"> <li>• Call poison control center or doctor immediately for treatment advice.</li> <li>• Have person sip a glass of water if able to swallow.</li> <li>• Do not induce vomiting unless told to do so by a poison control center or doctor.</li> <li>• Do not give anything by mouth to an unconscious person.</li> </ul> |
| If on skin or clothing  | <ul style="list-style-type: none"> <li>• Take off contaminated clothing.</li> <li>• Rinse skin immediately with plenty of water for 15-20 minutes.</li> <li>• Call a poison control center or doctor for treatment advice.</li> </ul>  |
| If inhaled  | <ul style="list-style-type: none"> <li>• Move person to fresh air.</li> <li>• If person is not breathing, call 911 or an ambulance, then give artificial respiration, preferably mouth-to-mouth if possible.</li> <li>• Call a poison control center or doctor for treatment advice.</li> </ul>  |
| HOT LINE NUMBER   |  |
| Have the container or label with you when calling a poison control center or doctor, or going for treatment. You may also contact the National Pesticide Information Center (NPIC) at 1-800-858-7378 for emergency medical treatment information. |  |
| NOTE TO PHYSICIAN   |  |
| Probable mucosal damage may contraindicate the use of gastric lavage.   |  |

**PHYSICAL OR CHEMICAL HAZARDS:** Combustible. Do not use or store near heat or open flame.

**SUBLABEL D**

**FRONT LABEL:**

**ENOZ® Moth Cake**

**[Cedar Scented] [Lavender Scented] [Linen Scented]**

**Protects Clothing**

Kills Clothes Moths and Carpet Beetles and Their Eggs and Larvae,

Aids in Mildew Control, When Used In Air-Tight Containers

This product can treat up to 12.5 cu. ft.

ACTIVE INGREDIENT: p-Dichlorobenzene..... 99.68%  
 OTHER INGREDIENTS:..... 00.32%  
 TOTAL:..... 100.00%

KEEP OUT OF REACH OF CHILDREN

**WARNING**

See back panel for additional precautionary statements.

Net Weight: 4 oz. (113g)

**BACK LABEL:**

**DIRECTIONS FOR USE**

It is a violation of Federal law to use this product in a manner inconsistent with its labeling.

**IMPORTANT: Keep out of reach of children. Do not place in areas accessible to children.**

**Use Restrictions:** This product can treat up to 12.5 cubic feet. Kills clothes moths and carpet beetles and their eggs and larvae in clean, airtight containers, such as chests, trunks, and garment bags. Do not use dry cleaning bags, garbage bags or other containers that allow vapors to escape into occupied rooms. This product can damage some plastics, use only in polyethylene or polypropylene containers. Do not mix p-dichlorobenzene or use it together with other moth preventive chemicals.

**Pre-Application Directions:** For all fabric types: Dry clean, wash or brush articles to be protected prior to storage.

**Application Directions:** Unwrap the cake and while holding cake by the cellophane wrapper hang at the top of the storage container. The vapors work downward. Keep product in airtight space for a minimum of 7 days. When cake has dissipated replace with new unit. Odor quickly vanishes when articles are aired.

**Retreatment:** Since moths are active all year, replenish air-tight containers and bags 2 times a year.

**STORAGE AND DISPOSAL**

**Pesticide Storage:** Store in the original container, in a dry place inaccessible to children and pets. **Pesticide Disposal and Container Handling:** Nonrefillable container. Do not reuse or refill this container. **If empty:** Place in trash or offer for recycling if available. **If partly filled:** Call your local solid waste agency for disposal instructions. Never place unused product down any indoor or outdoor drain.

**PRECAUTIONARY STATEMENTS**

**HAZARDS TO HUMANS AND DOMESTIC ANIMALS**

**WARNING.** Causes substantial but temporary eye injury. Wear protective eyewear. Harmful if swallowed. Harmful if inhaled. Do not get in eyes or on clothing. Avoid contact with skin. Avoid breathing dust. Wash thoroughly with soap and water after handling and before eating, drinking, chewing gum, or using tobacco or using the toilet. Remove and wash contaminated clothing before reuse.

**NOTICE:** This product contains a chemical known to the State of California to cause cancer.

| FIRST AID   |  |
|---|--|
| If in eyes  | <ul style="list-style-type: none"> <li>• Hold eye open and rinse slowly and gently with water for 15-20 minutes.</li> <li>• Remove contact lenses, if present, after the first 5 minutes, then continue rinsing eye.</li> <li>• Call a poison control center or doctor for treatment advice.</li> </ul>  |
| If swallowed  | <ul style="list-style-type: none"> <li>• Call poison control center or doctor immediately for treatment advice.</li> <li>• Have person sip a glass of water if able to swallow.</li> <li>• Do not induce vomiting unless told to do so by a poison control center or doctor.</li> <li>• Do not give anything by mouth to an unconscious person.</li> </ul> |
| If on skin or clothing  | <ul style="list-style-type: none"> <li>• Take off contaminated clothing.</li> <li>• Rinse skin immediately with plenty of water for 15-20 minutes.</li> <li>• Call a poison control center or doctor for treatment advice.</li> </ul>  |
| If inhaled  | <ul style="list-style-type: none"> <li>• Move person to fresh air.</li> <li>• If person is not breathing, call 911 or an ambulance, then give artificial respiration, preferably mouth-to-mouth if possible.</li> <li>• Call a poison control center or doctor for treatment advice.</li> </ul>  |
| HOT LINE NUMBER   |  |
| Have the container or label with you when calling a poison control center or doctor, or going for treatment. You may also contact the National Pesticide Information Center (NPIC) at 1-800-858-7378 for emergency medical treatment information. |  |
| NOTE TO PHYSICIAN   |  |
| Probable mucosal damage may contraindicate the use of gastric lavage.   |  |

**PHYSICAL OR CHEMICAL HAZARDS:** Combustible. Do not use or store near heat or open flame.

EPA Reg. No. 1475-113  
 EPA Est. No. 1475-MO-1  
 ©2017

Willert Home Products  
 4044 Park Ave.  
 St. Louis, MO 63110

**SUBLABEL E**

**FRONT LABEL:**

**ENOZ® Moth Killer**

**[Cedar Scented] [Lavender Scented] [Linen Scented]**

**Protects Clothing**

Kills Clothes Moths and Carpet Beetles and Their Eggs and Larvae,

Aids in Mildew Control, When Used In Air-Tight Containers

This product can treat up to 28.1 cu. ft.

|   |         |
|---|---------|
| ACTIVE INGREDIENT: p-Dichlorobenzene..... | 99.68%  |
| OTHER INGREDIENTS:.....                   | 00.32%  |
| TOTAL:.....                               | 100.00% |

**KEEP OUT OF REACH OF CHILDREN**

**WARNING**

See back panel for additional precautionary statements.

Net Weight: 9 oz. (255g)

**BACK LABEL:**

**DIRECTIONS FOR USE**

It is a violation of Federal law to use this product in a manner inconsistent with its labeling.

**IMPORTANT: Keep out of reach of children. Do not place in areas accessible to children.**

**Use Restrictions:** This product can treat up to 28.1 cubic feet. Kills clothes moths and carpet beetles and their eggs and larvae in clean, airtight containers, such as chests, trunks, and garment bags. Do not use dry cleaning bags, garbage bags or other containers that allow vapors to escape into occupied rooms. This product can damage some plastics, use only in polyethylene or polypropylene containers. Do not mix p-dichlorobenzene or use it together with other moth preventive chemicals.

**Pre-Application Directions:** For all fabric types: Dry clean, wash or brush articles to be protected prior to storage.

**Application Directions:** Open plastic case. Unwrap each cake, and while holding cake by the cellophane wrapper, transfer back into the plastic case. Place the filled plastic case at the top of the storage container. The vapors work downward. Keep product in airtight space for a minimum of 7 days. When cakes have dissipated replace with refill cakes. Odor quickly vanishes when articles are aired.

**Retreatment:** Since moths are active all year, replenish air-tight containers and bags 2 times a year.

**STORAGE AND DISPOSAL**

**Pesticide Storage:** Store in the original container, in a dry place inaccessible to children and pets. **Pesticide Disposal and Container Handling:** Nonrefillable container. Do not reuse or refill this container. **If empty:** Place in trash or offer for recycling if available. **If partly filled:** Call your local solid waste agency for disposal instructions. Never place unused product down any indoor or outdoor drain.

**PRECAUTIONARY STATEMENTS**

**HAZARDS TO HUMANS AND DOMESTIC ANIMALS**

**WARNING.** Causes substantial but temporary eye injury. Wear protective eyewear. Harmful if swallowed. Harmful if inhaled. Do not get in eyes or on clothing. Avoid contact with skin. Avoid breathing dust. Wash thoroughly with soap and water after handling and before eating, drinking, chewing gum, or using tobacco or using the toilet. Remove and wash contaminated clothing before reuse.

**NOTICE:** This product contains a chemical known to the State of California to cause cancer.

| FIRST AID   |  |
|---|--|
| If in eyes  | <ul style="list-style-type: none"> <li>• Hold eye open and rinse slowly and gently with water for 15-20 minutes.</li> <li>• Remove contact lenses, if present, after the first 5 minutes, then continue rinsing eye.</li> <li>• Call a poison control center or doctor for treatment advice.</li> </ul>  |
| If swallowed  | <ul style="list-style-type: none"> <li>• Call poison control center or doctor immediately for treatment advice.</li> <li>• Have person sip a glass of water if able to swallow.</li> <li>• Do not induce vomiting unless told to do so by a poison control center or doctor.</li> <li>• Do not give anything by mouth to an unconscious person.</li> </ul> |
| If on skin or clothing  | <ul style="list-style-type: none"> <li>• Take off contaminated clothing.</li> <li>• Rinse skin immediately with plenty of water for 15-20 minutes.</li> <li>• Call a poison control center or doctor for treatment advice.</li> </ul>  |
| If inhaled  | <ul style="list-style-type: none"> <li>• Move person to fresh air.</li> <li>• If person is not breathing, call 911 or an ambulance, then give artificial respiration, preferably mouth-to-mouth if possible.</li> <li>• Call a poison control center or doctor for treatment advice.</li> </ul>  |
| HOT LINE NUMBER   |  |
| Have the container or label with you when calling a poison control center or doctor, or going for treatment. You may also contact the National Pesticide Information Center (NPIC) at 1-800-858-7378 for emergency medical treatment information. |  |
| NOTE TO PHYSICIAN   |  |
| Probable mucosal damage may contraindicate the use of gastric lavage.   |  |

**PHYSICAL OR CHEMICAL HAZARDS:** Combustible. Do not use or store near heat or open flame.

EPA Reg. No. 1475-113  
 EPA Est. No. 1475-MO-1  
 ©2017

Willert Home Products  
 4044 Park Ave.  
 St. Louis, MO 63110

**SUBLABEL F**

[FRONT LABEL]

**ENOZ® Moth Blox**  
**[Cedar Scented] [Lavender Scented] [Linen Scented]**

**Protects Clothing**

Kills Clothes Moths and Carpet Beetles and Their Eggs and Larvae,

Aids in Mildew Control, When Used In Air-Tight Containers

This product can treat up to 29.7 cu. ft.

|   |               |
|---|---------------|
| ACTIVE INGREDIENT: p-Dichlorobenzene..... | 99.68%        |
| OTHER INGREDIENTS:.....                   | <u>00.32%</u> |
| TOTAL:.....                               | 100.00%       |

**KEEP OUT OF REACH OF CHILDREN**

**WARNING**

See back panel for additional precautionary statements.

Net Weight: 9.5 oz. (269g)

**BACK LABEL:**

**DIRECTIONS FOR USE**

It is a violation of Federal law to use this product in a manner inconsistent with its labeling.

**IMPORTANT: Keep out of reach of children. Do not place in areas accessible to children.**

**Use Restrictions:** This product can treat up to 29.7 cubic feet. Kills clothes moths and carpet beetles and their eggs and larvae in clean, airtight containers, such as chests, trunks, and garment bags. Do not use dry cleaning bags, garbage bags or other containers that allow vapors to escape into occupied rooms. This product can damage some plastics, use only in polyethylene or polypropylene containers. Do not mix p-dichlorobenzene or use it together with other moth preventive chemicals.

**Pre-Application Directions:** For all fabric types: Dry clean, wash or brush articles to be protected prior to storage.

**Application Directions:** Open package. Unwrap each cake, and while holding cake by the cellophane wrapper, transfer into the plastic case. Place the filled plastic case at the top of the storage container. The vapors work downward. Keep product in airtight space for a minimum of 7 days. When cake has dissipated replace with new refill cake. Odor quickly vanishes when articles are aired.

**Retreatment:** Since moths are active all year, replenish air-tight containers and bags 2 times a year.

**STORAGE AND DISPOSAL**

**Pesticide Storage:** Store in the original container, in a dry place inaccessible to children and pets. **Pesticide Disposal and Container Handling:** Nonrefillable container. Do not reuse or refill this container. **If empty:** Place in trash or offer for recycling if available. **If partly filled:** Call your local solid waste agency for disposal instructions. Never place unused product down any indoor or outdoor drain.

**PRECAUTIONARY STATEMENTS**

**HAZARDS TO HUMANS AND DOMESTIC ANIMALS**

**WARNING.** Causes substantial but temporary eye injury. Wear protective eyewear. Harmful if swallowed. Harmful if inhaled. Do not get in eyes or on clothing. Avoid contact with skin. Avoid breathing dust. Wash thoroughly with soap and water after handling and before eating, drinking, chewing gum, or using tobacco or using the toilet. Remove and wash contaminated clothing before reuse.

**NOTICE:** This product contains a chemical known to the State of California to cause cancer.

| FIRST AID   |  |
|---|--|
| If in eyes  | <ul style="list-style-type: none"> <li>• Hold eye open and rinse slowly and gently with water for 15-20 minutes.</li> <li>• Remove contact lenses, if present, after the first 5 minutes, then continue rinsing eye.</li> <li>• Call a poison control center or doctor for treatment advice.</li> </ul>  |
| If swallowed  | <ul style="list-style-type: none"> <li>• Call poison control center or doctor immediately for treatment advice.</li> <li>• Have person sip a glass of water if able to swallow.</li> <li>• Do not induce vomiting unless told to do so by a poison control center or doctor.</li> <li>• Do not give anything by mouth to an unconscious person.</li> </ul> |
| If on skin or clothing  | <ul style="list-style-type: none"> <li>• Take off contaminated clothing.</li> <li>• Rinse skin immediately with plenty of water for 15-20 minutes.</li> <li>• Call a poison control center or doctor for treatment advice.</li> </ul>  |
| If inhaled  | <ul style="list-style-type: none"> <li>• Move person to fresh air.</li> <li>• If person is not breathing, call 911 or an ambulance, then give artificial respiration, preferably mouth-to-mouth if possible.</li> <li>• Call a poison control center or doctor for treatment advice.</li> </ul>  |
| HOT LINE NUMBER   |  |
| Have the container or label with you when calling a poison control center or doctor, or going for treatment. You may also contact the National Pesticide Information Center (NPIC) at 1-800-858-7378 for emergency medical treatment information. |  |
| NOTE TO PHYSICIAN   |  |
| Probable mucosal damage may contraindicate the use of gastric lavage.   |  |

**PHYSICAL OR CHEMICAL HAZARDS:** Combustible. Do not use or store near heat or open flame.

EPA Reg. No. 1475-113  
 EPA Est. No. 1475-MO-1  
 ©2017

Willert Home Products  
 4044 Park Ave.  
 St. Louis, MO 63110



**SUBLABEL G**

[FRONT LABEL]

**Enoz® Moth Bar [with Peel-Off Label]**

**[PEEL HERE TO REMOVE]**

**[Cedar Scented] [Lavender Scented] [Linen Scented]**

**Protects Clothing**

Kills Clothes Moths and Carpet Beetles and Their Eggs and Larvae,  
Aids in Mildew Control, When Used in Air-Tight Containers

[For Use in Closets, Wardrobes and Garment Bags]

[For Hanging Garments]

This Product can treat up to 18.8 cu.ft.

[NO CLINGING ODOR!]

|   |         |
|---|---------|
| ACTIVE INGREDIENT: p-Dichlorobenzene..... | 99.68%  |
| OTHER INGREDIENTS:.....                   | 00.32%  |
| TOTAL:.....                               | 100.00% |

KEEP OUT OF REACH OF CHILDREN

WARNING

See back panel for additional precautionary statements.

Net Wt. 6 oz (170g)

**[BACK LABEL]**

**[PEEL HERE TO REMOVE] [PEEL HERE FOR SPANISH]**

**DIRECTIONS FOR USE**

It is a violation of Federal law to use this product in a manner inconsistent with its labeling.

**Use Restrictions:** This product can treat up to 18.8 cubic feet. Kills clothes moths and carpet beetles and their eggs and larvae in clean, airtight containers, such as chests, trunks, and garment bags. Do not use dry cleaning bags, garbage bags or other containers that allow vapors to escape into occupied rooms. This product can damage some plastics, use only in polyethylene or polypropylene containers. Do not mix p-dichlorobenzene or use it together with other moth preventive chemicals.

**Pre-Application Directions:** For all fabric types: Dry clean, wash or brush articles to be protected prior to storage.

**Application Directions:** Peel away front and back labels to release vapors. Hang or place unit at the top of the storage container. The vapors work downward. Keep product in airtight space for a minimum of 7 days. When product has dissipated replace with a new unit. Odor quickly vanishes when articles are aired.

**Retreatment:** Since moths are active all year, replenish airtight containers and bags 2 times a year.

**STORAGE AND DISPOSAL**

**Pesticide Storage:** Store in the original container, in a dry place inaccessible to children and pets. **Pesticide Disposal and Container Handling:** Nonrefillable container. Do not reuse or refill this container. **If empty:** Place in trash or offer for recycling if available. **If partly filled:** Call your local solid waste agency for disposal instructions. Never place unused product down any indoor or outdoor drain.

**PRECAUTIONARY STATEMENTS**

**HAZARDS TO HUMANS AND DOMESTIC ANIMALS**

**WARNING.** Causes substantial but temporary eye injury. Wear protective eyewear. Harmful if swallowed. Harmful if inhaled. Do not get in eyes or on clothing. Avoid contact with skin. Avoid breathing dust. Wash thoroughly with soap and water after handling and before eating, drinking, chewing gum, or using tobacco or using the toilet. Remove and wash contaminated clothing before reuse.

NOTICE: This product contains a chemical known to the State of California to cause cancer.

| FIRST AID   |  |
|---|--|
| If in eyes  | <ul style="list-style-type: none"> <li>• Hold eye open and rinse slowly and gently with water for 15-20 minutes.</li> <li>• Remove contact lenses, if present, after the first 5 minutes, then continue rinsing eye.</li> <li>• Call a poison control center or doctor for treatment advice.</li> </ul>  |
| If swallowed  | <ul style="list-style-type: none"> <li>• Call poison control center or doctor immediately for treatment advice.</li> <li>• Have person sip a glass of water if able to swallow.</li> <li>• Do not induce vomiting unless told to do so by a poison control center or doctor.</li> <li>• Do not give anything by mouth to an unconscious person.</li> </ul> |
| If on skin or clothing  | <ul style="list-style-type: none"> <li>• Take off contaminated clothing.</li> <li>• Rinse skin immediately with plenty of water for 15-20 minutes.</li> <li>• Call a poison control center or doctor for treatment advice.</li> </ul>  |
| If inhaled  | <ul style="list-style-type: none"> <li>• Move person to fresh air.</li> <li>• If person is not breathing, call 911 or an ambulance, then give artificial respiration, preferably mouth-to-mouth if possible.</li> <li>• Call a poison control center or doctor for treatment advice.</li> </ul>  |
| HOT LINE NUMBER   |  |
| Have the container or label with you when calling a poison control center or doctor, or going for treatment. You may also contact the National Pesticide Information Center (NPIC) at 1-800-858-7378 for emergency medical treatment information. |  |
| NOTE TO PHYSICIAN   |  |
| Probable mucosal damage may contraindicate the use of gastric lavage.   |  |

**PHYSICAL OR CHEMICAL HAZARDS:** Combustible. Do not use or store near heat or open flame.

EPA Reg. No. 1475-113  
EPA Est. No. 1475-MO-1

Willert Home Products  
4044 Park Ave.  
St. Louis, MO 63110

**SUBLABEL H**

[FRONT LABEL]

**1.) ENOZ® Moth Bar Refill**

[Cedar Scented] [Lavender Scented] [Linen Scented] [Linen Scent]

Marketing Claims:

- Protects Clothing
- Kills Clothes Moths and Carpet Beetles and Their Eggs and Larvae,
- Aids in Mildew Control, When Used in Air-Tight Containers
- Each Refill can treat up to 18.8 cu. ft.
- Contains x Refills [x = # of refills in container]
- No mess
- Convenient Refills [For Enoz Moth Bar Plastic Case]
- [Moth Bar][Moth Cake] Refills for Plastic Hanger
- Refills available at shop.willert.com
- For Use in Closets, Wardrobes and Garment Bags

ACTIVE INGREDIENT: p-Dichlorobenzene.....99.68%  
 OTHER INGREDIENTS:.....00.32%  
 TOTAL:.....100.00%

KEEP OUT OF REACH OF CHILDREN

WARNING

See back panel for additional precautionary statements.

Net Weight: 6 oz. (170g)  
 12 oz. (340g)  
 1 lb. 2 oz. (510g)  
 1 lb. 8 oz. (680g)

**[BACK LABEL]**

**DIRECTIONS FOR USE**

It is a violation of Federal law to use this product in a manner inconsistent with its labeling.

**IMPORTANT: Keep out of reach of children. Do not place in areas accessible to children.**

**Use Restrictions:** Each refill can treat up to 18.8 cubic feet. Kills clothes moths and carpet beetles and their eggs and larvae in clean, airtight containers, such as chests, trunks, and garment bags. Do not use dry cleaning bags, garbage bags, or other containers that allow vapors to escape into occupied rooms. This product can damage some plastics, use only in polyethylene or polypropylene containers. Do not mix p-dichlorobenzene or use it together with other moth preventive chemicals.

**Pre Application Directions:** For all fabric types: Dry clean, wash or brush articles to be protected prior to storage. Prevents moth infestation regardless of fabric type.

**Application Directions:** Cut open [package][pouch]. While holding [cake][bar] by the wrapper, transfer into the plastic case. Place the filled plastic case at the top of the storage container. The vapors work downward. Keep product in airtight space for minimum of 7 days. When product has dissipated replace with new unit. Odor quickly vanishes when articles are aired.

**Retreatment:** Since moths are active all year, replenish air-tight containers and bags 2 times per year.

**STORAGE AND DISPOSAL**

**Pesticide Storage:** Store in the original container, in a dry place inaccessible to children and pets. **Pesticide Disposal and Container Handling.** Non-refillable container. Do not reuse or refill this container. **If empty:** Place in trash or offer for recycling if available. **If partly filled.** Call your local solid waste agency for disposal instructions. Never place unused product down any indoor or outdoor drain.

**PRECAUTIONARY STATEMENTS**

**HAZARDS TO HUMANS AND DOMESTIC ANIMALS**

**WARNING.** Causes substantial but temporary eye injury. Wear protective eyewear. Harmful if swallowed. Harmful if inhaled. Do not get in eyes or on clothing. Avoid contact with skin. Avoid breathing dust. Wash thoroughly with soap and water after handling and before eating, drinking, chewing gum, or using tobacco or using the toilet. Remove and wash contaminated clothing before reuse.

**NOTICE:** This product contains a chemical known to the State of California to cause cancer.

| <b>FIRST AID</b>  |  |
|---|--|
| If in eyes  | <ul style="list-style-type: none"> <li>• Hold eye open and rinse slowly and gently with water for 15-20 minutes.</li> <li>• Remove contact lenses, if present, after the first 5 minutes, then continue rinsing eye.</li> <li>• Call a poison control center or doctor for treatment advice.</li> </ul>  |
| If swallowed  | <ul style="list-style-type: none"> <li>• Call poison control center or doctor immediately for treatment advice.</li> <li>• Have person sip a glass of water if able to swallow.</li> <li>• Do not induce vomiting unless told to do so by a poison control center or doctor.</li> <li>• Do not give anything by mouth to an unconscious person.</li> </ul> |
| If on skin or clothing  | <ul style="list-style-type: none"> <li>• Take off contaminated clothing.</li> <li>• Rinse skin immediately with plenty of water for 15-20 minutes.</li> <li>• Call a poison control center or doctor for treatment advice.</li> </ul>  |
| If inhaled  | <ul style="list-style-type: none"> <li>• Move person to fresh air.</li> <li>• If person is not breathing, call 911 or an ambulance, then give artificial respiration, preferably mouth-to-mouth if possible.</li> <li>• Call a poison control center or doctor for treatment advice.</li> </ul>  |
| <b>HOT LINE NUMBER</b>  |  |
| Have the container or label with you when calling a poison control center or doctor, or going for treatment. You may also contact the National Pesticide Information Center (NPIC) at 1-800-858-7378 for emergency medical treatment information. |  |
| <b>NOTE TO PHYSICIAN</b>  |  |
| Probable mucosal damage may contraindicate the use of gastric lavage.   |  |

**PHYSICAL OR CHEMICAL HAZARDS:** Combustible. Do not use or store near heat or open flame.

**SUBLABEL I**

**[FRONT LABEL]**

**Reefer-Galler® Moth Cake**

**[Cedar Scented] [Lavender Scented] [Linen Scented] [Linen Scent]**

Marketing Claims:

- Protects Clothing
- Kills Clothes Moths and Carpet Beetles and Their Eggs and Larvae,
- Aids in Mildew Control, When Used in Air-Tight Containers
- This Product can treat up to 18.8 cu. ft.
- New! Easy Open Container (for use for 6 months)
- Easy Open Container
- Easy to Open
- Now Easier to Open
- No Direct Contact with Skin
- No mess
- No Clinging Odor
- For Use in Closets, Wardrobes and Garment Bags
- For Hanging Garments

ACTIVE INGREDIENT: p-Dichlorobenzene.....99.68%  
 OTHER INGREDIENTS:.....00.32%  
 TOTAL:.....100.00%

KEEP OUT OF REACH OF CHILDREN

**WARNING**

See back panel for additional precautionary statements.

Net Weight: 6 oz. (170g)

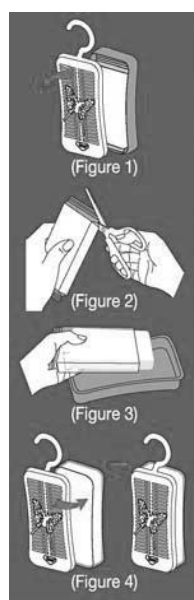
**[BACK LABEL]****DIRECTIONS FOR USE**

It is a violation of Federal law to use this product in a manner inconsistent with its labeling.

**IMPORTANT: Keep out of reach of children. Do not place in areas accessible to children.**

**Use Restrictions:** -This product can treat up to 18.8 cubic feet. Kills clothes moths and carpet beetles and their eggs and larvae in clean, airtight containers, such as chests, trunks, and garment bags. Do not use dry cleaning bags, garbage bags or other containers that allow vapors to escape into occupied rooms. This product can damage some plastics, use only in polyethylene or polypropylene containers. Do not mix p-dichlorobenzene or use it together with other moth preventive chemicals.

**Pre-Application Directions:** For all fabric types: Dry clean, wash or brush articles to be protected prior to storage. Prevents moth infestation regardless of fabric type.



**Application Directions:** Remove lid to open [plastic case] [container] (Figure 1). Cut Open Pouch (Figure 2). While holding cake by wrapper, transfer into the plastic [case][container] (Figure 3). Replace lid. (Figure 4). Place the filled plastic case at the top of the storage container. The vapors work downward. Keep product in airtight space for a minimum of 7 days. When product has dissipated replace with new unit. Odor quickly vanishes when articles are aired.

**Retreatment:** Since moths are active all year, replenish air-tight containers and bags 2 times a year.

**STORAGE AND DISPOSAL**

**Pesticide Storage:** Store in the original container, in a dry place inaccessible to children and pets. **Pesticide Disposal and Container Handling: Nonrefillable container.** Do not reuse or refill this container. **If empty:** Place in trash or offer for recycling if available. **If partly filled:** Call your local solid waste agency for disposal instructions. Never place unused product down any indoor or outdoor drain.

**PRECAUTIONARY STATEMENTS**

**HAZARDS TO HUMANS AND DOMESTIC ANIMALS**

**WARNING.** Causes substantial but temporary eye injury. Wear protective eyewear. Harmful if swallowed. Harmful if inhaled. Do not get in eyes or on clothing. Avoid contact with skin. Avoid breathing dust. Wash thoroughly with soap and water after handling and before eating, drinking, chewing gum, or using tobacco or using the toilet. Remove and wash contaminated clothing before reuse.

**NOTICE:** This product contains a chemical known to the State of California to cause cancer.

| FIRST AID   |  |
|---|--|
| If in eyes  | <ul style="list-style-type: none"> <li>• Hold eye open and rinse slowly and gently with water for 15-20 minutes.</li> <li>• Remove contact lenses, if present, after the first 5 minutes, then continue rinsing eye.</li> <li>• Call a poison control center or doctor for treatment advice.</li> </ul>  |
| If swallowed  | <ul style="list-style-type: none"> <li>• Call poison control center or doctor immediately for treatment advice.</li> <li>• Have person sip a glass of water if able to swallow.</li> <li>• Do not induce vomiting unless told to do so by a poison control center or doctor.</li> <li>• Do not give anything by mouth to an unconscious person.</li> </ul> |
| If on skin or clothing  | <ul style="list-style-type: none"> <li>• Take off contaminated clothing.</li> <li>• Rinse skin immediately with plenty of water for 15-20 minutes.</li> <li>• Call a poison control center or doctor for treatment advice.</li> </ul>  |
| If inhaled  | <ul style="list-style-type: none"> <li>• Move person to fresh air.</li> <li>• If person is not breathing, call 911 or an ambulance, then give artificial respiration, preferably mouth-to-mouth if possible.</li> <li>• Call a poison control center or doctor for treatment advice.</li> </ul>  |
| HOT LINE NUMBER   |  |
| Have the container or label with you when calling a poison control center or doctor, or going for treatment. You may also contact the National Pesticide Information Center (NPIC) at 1-800-858-7378 for emergency medical treatment information. |  |
| NOTE TO PHYSICIAN   |  |
| Probable mucosal damage may contraindicate the use of gastric lavage.   |  |

**PHYSICAL OR CHEMICAL HAZARDS:** Combustible. Do not use or store near heat or open flame.

EPA Reg. No. 1475-113  
 EPA Est. No. 1475-MO-1, 88559-CHN-1  
 ©2017

Willert Home Products  
 4044 Park Ave.  
 St. Louis, MO 63110