



OFFICE OF CHEMICAL SAFETY AND POLLUTION PREVENTION

WASHINGTON, D.C. 20460

March 3, 2026

Kelly Webster
Director, Regulatory Affairs
Willert Home Products
4044 Park Avenue
Saint Louis, MO 63110

Subject: Label Amendment - Registration Review Mitigation for Paradichlorobenzene
Product Name: ENOZ MOTH CAKE
EPA Registration Number: 1475-7
Case Number: 472024
Application Dates: 5/13/2021

Dear Kelly Webster:

The Agency, in accordance with the Federal Insecticide, Fungicide, and Rodenticide Act (FIFRA), as amended, has completed reviewing all the information submitted with your application to support the Registration Review of the above referenced product in connection with the Paradichlorobenzene Interim Decision, and has concluded that your submission is acceptable. The label referred to above, submitted in connection with registration under FIFRA, as amended, is acceptable.

Should you wish to add/retain a reference to the company's website on your label, then please be aware that the website becomes labeling under the Federal Insecticide, Fungicide, and Rodenticide Act and is subject to review by the Agency. If the website is false or misleading, the product would be misbranded and unlawful to sell or distribute under FIFRA section 12(a)(1)(E). 40 CFR 156.10(a)(5) list examples of statements EPA may consider false or misleading. In addition, regardless of whether a website is referenced on your product's label, claims made on the website may not substantially differ from those claims approved through the registration process. Therefore, should the Agency find or if it is brought to our attention that a website contains false or misleading statements or claims substantially differing from the EPA approved registration, the website will be referred to the EPA's Office of Enforcement and Compliance Assurance.

A stamped copy of your labeling is enclosed for your records. This labeling supersedes all previously accepted labeling and must be used at your next label printing. You must

submit one copy of the final printed labeling before you release the product for shipment with the new labeling. In accordance with 40 CFR 152.130(c), you may distribute or sell this product under the previously approved labeling for 12 months from the date of this letter. After 12 months, you may only distribute or sell this product if it bears this new revised labeling or subsequently approved labeling. "To distribute or sell" is defined under FIFRA section 2(gg) and its implementing regulation at 40 CFR 152.3.

If you have any questions about this letter, please contact Christian Bongard by phone at 202-566-2248, or via email at Bongard.Christian@epa.gov.

Sincerely,

A handwritten signature in black ink that reads "Jaclyn Pyne". The signature is written in a cursive style and is centered below the word "Sincerely,".

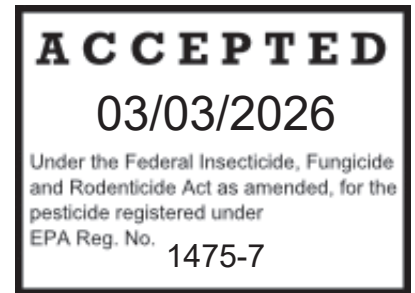
Jaclyn Pyne, Team Leader
Risk Management and Implementation Branch 3
Pesticide Re-Evaluation Division
Office of Pesticide Programs

ENCLOSURE: Stamped label

MASTER LABEL

This Master Label contains six (6) sub-labels for the following products:

- 1. ENOZ® Moth Cake
ENOZ® Since 1918 Moth Cake
Hang up Cake, Net Weight 2 oz.
- 2. ENOZ® Moth Cake Refills
ENOZ® Since 1918 Moth Cake Refills
Hang up Cakes, Contains 2 – 2 oz. Refills, Total Net Wt. 4 oz.
- 3. ENOZ® Moth Cake
ENOZ® Since 1918 Moth Cake
Hang up Cakes, Contains 3 – 2 oz. Cakes, Total Net Wt. 6 oz.
- 4. ENOZ® Moth Cake
ENOZ® Since 1918 Moth Cake
Hang up Cake, Net Weight 6 oz.
- 5. ENOZ® Moth Cake
ENOZ® Since 1918 Moth Cake
With peel-off label, Net Weight 6 oz.
- 6. ENOZ® Moth Cake Refill[s]
ENOZ® Since 1918 Moth Cake Refill[s]



Active Ingredient: p-Dichlorobenzene.....99.90%
 Other Ingredients:00.10%
 Total:100.00%

**KEEP OUT OF REACH OF CHILDREN
WARNING**

See individual sub-labels for additional Precautionary Statements and Directions for Use.

EPA Reg. No. 1475-7
EPA Est. No. 1475-MO-1, 88559-CHN-1, 86723-PHL-1

SUB-LABEL 1

**Enoz[®] Moth Cake
Enoz[®] Since 1918 Moth Cake
(2 oz. Hang up Cake)**

[FRONT LABEL]

Kills Clothes Moths and Carpet Beetles and Their Eggs and Larvae,
When Used In Air-Tight Containers
This product can treat up to 6.25 cu. ft.
No Clinging Odor
Protects Clothing

ACTIVE INGREDIENT: p-Dichlorobenzene..... 99.90%
OTHER INGREDIENTS00.10%
TOTAL.....100.00%

KEEP OUT OF REACH OF CHILDREN

WARNING

See back panel for additional precautionary statements.

Net Weight: 2 oz. (56g)

[BACK LABEL]

DIRECTIONS FOR USE

It is a violation of Federal law to use this product in a manner inconsistent with its labeling.

IMPORTANT: Keep out of reach of children and pets. Do not place in areas accessible to children and pets.

Use Restrictions: This product can treat up to 6.25 cubic feet. Kills clothes moths and carpet beetles and their eggs and larvae in clean, airtight containers which could include chests, trunks, garment bags and storage closets. Do not use dry cleaning bags, garbage bags or other containers that allow vapors to escape into occupied rooms. If the product’s smell persists after placing it inside a container and sealing it, that container is not airtight and is not suitable for applying this product. This product can damage some plastics, use only in polyethylene or polypropylene containers. Do not mix p-dichlorobenzene or use it together with other moth preventive chemicals.

Pre-Application Directions: For all fabric types: Dry clean, wash or brush articles to be protected prior to storage.

Application Directions: Open plastic hanger. Unwrap the cake, and while holding cake by the cellophane wrapper, transfer back into the plastic hanger. Place the filled plastic hanger at the top of the storage container. The vapors work downward. Keep product in airtight space for a minimum of 7 days. When cake has dissipated replace with new unit. Odor quickly vanishes when articles are aired.

Retreatment: Since moths are active all year, replenish air-tight containers and bags 2 times a year.

STORAGE AND DISPOSAL

Pesticide Storage: Store in the original container, in a dry place inaccessible to children and pets.

Pesticide Disposal and Container Handling: Refillable container. Refill this container with Enoz Moth Cake Refills only. Do not use this container for any other purpose. **If empty:** Place in trash or offer for recycling if available. **If partly filled:** Call your local solid waste agency for disposal instructions. Never place unused product down any indoor or outdoor drain.

PRECAUTIONARY STATEMENTS

Hazards to Humans and Domestic Animals

WARNING. Causes substantial but temporary eye injury. Wear protective eyewear. Harmful if swallowed. Harmful if inhaled. Do not get in eyes or on clothing. Avoid contact with skin. Avoid breathing dust. Wash thoroughly with soap and water after handling and before eating, drinking, chewing gum, using tobacco or using the toilet. Remove and wash contaminated clothing before reuse.

NOTICE: This product contains a chemical known to the State of California to cause cancer.

FIRST AID	
If in eyes	<ul style="list-style-type: none"> • Hold eye open and rinse slowly and gently with water for 15-20 minutes. • Remove contact lenses, if present, after the first 5 minutes, then continue rinsing eye. • Call a poison control center or doctor for treatment advice.
If swallowed	<ul style="list-style-type: none"> • Call poison control center or doctor immediately for treatment advice. • Have person drink several glasses of water. • Do not induce vomiting. • Do not give anything by mouth to an unconscious person.
If on skin or clothing	<ul style="list-style-type: none"> • Take off contaminated clothing. • Rinse skin immediately with plenty of water for 15-20 minutes. • Call a poison control center or doctor for treatment advice.
If inhaled	<ul style="list-style-type: none"> • Move person to fresh air. • If person is not breathing, call 911 or an ambulance, then give artificial respiration, preferably mouth-to-mouth if possible. • Call a poison control center or doctor for treatment advice.
HOT LINE NUMBER	
Have the container or label with you when calling a poison control center or doctor, or going for treatment. You may also contact the National Pesticide Information Center (NPIC) at 1-800-858-7378 for emergency medical treatment information.	
NOTE TO PHYSICIAN	
Probable mucosal damage may contraindicate the use of gastric lavage.	

PHYSICAL OR CHEMICAL HAZARDS: Combustible. Do not use or store near heat or open flame.

EPA Reg. No. 1475-7
 EPA Est. No. 1475-MO-1
 ©2021

Willert Home Products
 4044 Park Avenue
 St. Louis, MO 63110

SUB-LABEL 2
Enoz® Moth Cake Refills
Enoz® Since 1918 Moth Cake Refills
(2 - 2 oz. Cakes)

[FRONT LABEL]

Kills Clothes Moths and Carpet Beetles and Their Eggs and Larvae,
When Used In Air-Tight Containers

Contains 2 – 2 oz. refills

Each refill can treat up to 6.25 cu. ft.

No Clinging Odor

Protects Clothing

[For Hang-up Plastic Case]

[Moth Cake Refills for Plastic Hanger]

ACTIVE INGREDIENT: p-Dichlorobenzene.....	99.90%
OTHER INGREDIENTS	<u>00.10%</u>
TOTAL.....	100.00%

KEEP OUT OF REACH OF CHILDREN

WARNING

See back panel for additional precautionary statements.

Contains 2 - 2 oz. Cakes, Total Net Wt. 4 oz. (113g)

[BACK LABEL]

DIRECTIONS FOR USE

It is a violation of Federal law to use this product in a manner inconsistent with its labeling.

IMPORTANT: Keep out of reach of children and pets. Do not place in areas accessible to children and pets.

Use Restrictions: Each refill can treat up to 6.25 cubic feet. Kills clothes moths and carpet beetles and their eggs and larvae in clean, airtight containers which could include chests, trunks, garment bags and storage closets. Do not use dry cleaning bags, garbage bags or other containers that allow vapors to escape into occupied rooms. If the product’s smell persists after placing it inside a container and sealing it, that container is not airtight and is not suitable for applying this product. This product can damage some plastics, use only in polyethylene or polypropylene containers. Do not mix p-dichlorobenzene or use it together with other moth preventive chemicals.

Pre-Application Directions: For all fabric types: Dry clean, wash or brush articles to be protected prior to storage.

Application Directions: Open box. Unwrap the cake, and while holding cake by the cellophane wrapper, transfer into the plastic hanger. Place the filled plastic hanger at the top of the storage container. The vapors work downward. Keep product in airtight space for a minimum of 7 days. When cake has dissipated replace with new unit. Odor quickly vanishes when articles are aired.

Retreatment: Since moths are active all year, replenish air-tight containers and bags 2 times a year.

STORAGE AND DISPOSAL

Pesticide Storage: Store in the original container, in a dry place inaccessible to children and pets.

Pesticide Disposal and Container Handling: Nonrefillable container. Do not reuse or refill this container. **If empty:** Place in trash or offer for recycling if available. **If partly filled:** Call your local solid waste agency for disposal instructions. Never place unused product down any indoor or outdoor drain.

PRECAUTIONARY STATEMENTS

Hazards to Humans and Domestic Animals

WARNING. Causes substantial but temporary eye injury. Wear protective eyewear. Harmful if swallowed. Harmful if inhaled. Do not get in eyes or on clothing. Avoid contact with skin. Avoid breathing dust. Wash thoroughly with soap and water after handling and before eating, drinking, chewing gum, using tobacco or using the toilet. Remove and wash contaminated clothing before reuse.

NOTICE: This product contains a chemical known to the State of California to cause cancer.

FIRST AID	
If in eyes	<ul style="list-style-type: none"> • Hold eye open and rinse slowly and gently with water for 15-20 minutes. • Remove contact lenses, if present, after the first 5 minutes, then continue rinsing eye. • Call a poison control center or doctor for treatment advice.
If swallowed	<ul style="list-style-type: none"> • Call poison control center or doctor immediately for treatment advice. • Have person drink several glasses of water. • Do not induce vomiting. • Do not give anything by mouth to an unconscious person.
If on skin or clothing	<ul style="list-style-type: none"> • Take off contaminated clothing. • Rinse skin immediately with plenty of water for 15-20 minutes. • Call a poison control center or doctor for treatment advice.
If inhaled	<ul style="list-style-type: none"> • Move person to fresh air. • If person is not breathing, call 911 or an ambulance, then give artificial respiration, preferably mouth-to-mouth if possible. • Call a poison control center or doctor for treatment advice.
HOT LINE NUMBER	
Have the container or label with you when calling a poison control center or doctor, or going for treatment. You may also contact the National Pesticide Information Center (NPIC) at 1-800-858-7378 for emergency medical treatment information.	
NOTE TO PHYSICIAN	
Probable mucosal damage may contraindicate the use of gastric lavage.	

PHYSICAL OR CHEMICAL HAZARDS: Combustible. Do not use or store near heat or open flame.

EPA Reg. No. 1475-7
 EPA Est. No. 1475-MO-1
 ©2021

Willert Home Products
 4044 Park Avenue
 St. Louis, MO 63110

SUB-LABEL 3

**ENOZ® Moth Cake
Enoz® Since 1918 Moth Cake
(3 – 2 oz. cakes)**

[FRONT LABEL]

Kills Clothes Moths and Carpet Beetles and Their Eggs and Larvae,
When Used In Air-Tight Containers
Hangs Easily In Clothing Storage Containers
This [package][product] can treat up to 18.8 cu. ft.
No Clinging Odor
Protects Clothing

ACTIVE INGREDIENT: p-Dichlorobenzene..... 99.90%
OTHER INGREDIENTS00.10%
TOTAL.....100.00%

KEEP OUT OF REACH OF CHILDREN

WARNING

See back panel for additional precautionary statements.

Contains 3 – 2 oz. Cakes, Total Net Wt. 6 oz. (170g)

[BACK LABEL]

DIRECTIONS FOR USE

It is a violation of Federal law to use this product in a manner inconsistent with its labeling.

IMPORTANT: Keep out of reach of children and pets. Do not place in areas accessible to children and pets.

Use Restrictions: Each cake can treat up to 6.25 cubic feet. Kills clothes moths and carpet beetles and their eggs and larvae in clean, airtight containers which could include chests, trunks, garment bags and storage closets. Do not use dry cleaning bags, garbage bags or other containers that allow vapors to escape into occupied rooms. If the product’s smell persists after placing it inside a container and sealing it, that container is not airtight and is not suitable for applying this product. This product can damage some plastics, use only in polyethylene or polypropylene containers. Do not mix p-dichlorobenzene or use it together with other moth preventive chemicals.

Pre-Application Directions: For all fabric types: Dry clean, wash or brush articles to be protected prior to storage.

Application Directions: Open plastic hanger. Unwrap the cake, and while holding the cake by the cellophane wrapper, transfer back into the plastic hanger. Place the filled plastic hanger at the top of the storage container. The vapors work downward. Keep product in airtight space for a minimum of 7 days. When cake has dissipated replace with new unit. Odor quickly vanishes when articles are aired.

Retreatment: Since moths are active all year, replenish air-tight containers and bags 2 times a year.

STORAGE AND DISPOSAL

Pesticide Storage: Store in the original container, in a dry place inaccessible to children and pets.

Pesticide Disposal and Container Handling: Nonrefillable container. Do not reuse or refill this container. **If empty:** Place in trash or offer for recycling if available. **If partly filled:** Call your local solid waste agency for disposal instructions. Never place unused product down any indoor or outdoor drain.

PRECAUTIONARY STATEMENTS

Hazards to Humans and Domestic Animals

WARNING. Causes substantial but temporary eye injury. Wear protective eyewear. Harmful if swallowed. Harmful if inhaled. Do not get in eyes or on clothing. Avoid contact with skin. Avoid breathing dust. Wash thoroughly with soap and water after handling and before eating, drinking, chewing gum, using tobacco or using the toilet. Remove and wash contaminated clothing before reuse.

NOTICE: This product contains a chemical known to the State of California to cause cancer.

FIRST AID	
If in eyes	<ul style="list-style-type: none"> • Hold eye open and rinse slowly and gently with water for 15-20 minutes. • Remove contact lenses, if present, after the first 5 minutes, then continue rinsing eye. • Call a poison control center or doctor for treatment advice.
If swallowed	<ul style="list-style-type: none"> • Call poison control center or doctor immediately for treatment advice. • Have person drink several glasses of water. • Do not induce vomiting. • Do not give anything by mouth to an unconscious person.
If on skin or clothing	<ul style="list-style-type: none"> • Take off contaminated clothing. • Rinse skin immediately with plenty of water for 15-20 minutes. • Call a poison control center or doctor for treatment advice.
If inhaled	<ul style="list-style-type: none"> • Move person to fresh air. • If person is not breathing, call 911 or an ambulance, then give artificial respiration, preferably mouth-to-mouth if possible. • Call a poison control center or doctor for treatment advice.
HOT LINE NUMBER	
Have the container or label with you when calling a poison control center or doctor, or going for treatment. You may also contact the National Pesticide Information Center (NPIC) at 1-800-858-7378 for emergency medical treatment information.	
NOTE TO PHYSICIAN	
Probable mucosal damage may contraindicate the use of gastric lavage.	

PHYSICAL OR CHEMICAL HAZARDS: Combustible. Do not use or store near heat or open flame.

EPA Reg. No. 1475-7
 EPA Est. No. 1475-MO-1
 ©2021

Willert Home Products
 4044 Park Avenue
 St. Louis, MO 63110

SUB-LABEL 4

ENOZ[®] Moth Cake
ENOZ[®] Since 1918 Moth Cake

[FRONT LABEL]

Marketing Claims:

- Protects Clothing
- Kills Clothes Moths and Carpet Beetles and Their Eggs and Larvae,
- Aids in Mildew Control, When Used in Air-Tight Containers
- This Product can treat up to 18.8 cu. ft.
- New! Easy Open Container
- Easy Open Container
- Easy to Open
- Now Easier to Open
- No Direct Contact with Skin
- No mess
- No Clinging Odor
- Refills available [[at] [visit] shop.willert.com]
- For Use in Closets, Wardrobes and Garment Bags
- For Hanging Garments

ACTIVE INGREDIENT: p-Dichlorobenzene.....	99.90%
OTHER INGREDIENTS	<u>00.10%</u>
TOTAL.....	100.00%

KEEP OUT OF REACH OF CHILDREN

WARNING

See back panel for additional precautionary statements.

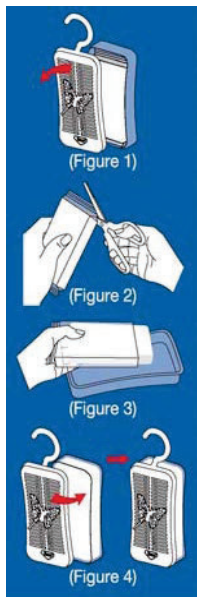
Net Weight: 6 oz. (170g)

[BACK LABEL]**DIRECTIONS FOR USE**

It is a violation of Federal law to use this product in a manner inconsistent with its labeling.

IMPORTANT: Keep out of reach of children and pets. Do not place in areas accessible to children and pets.

Use Restrictions: This product can treat up to 18.8 cubic feet. Kills clothes moths and carpet beetles and their eggs and larvae in clean, airtight containers which could include chests, trunks, garment bags and storage closets. Do not use dry cleaning bags, garbage bags or other containers that allow vapors to escape into occupied rooms. If the product's smell persists after placing it inside a container and sealing it, that container is not airtight and is not suitable for applying this product. This product can damage some plastics, use only in polyethylene or polypropylene containers. Do not mix p-dichlorobenzene or use it together with other moth preventive chemicals.



Pre-Application Directions: For all fabric types: Dry clean, wash or brush articles to be protected prior to storage. Prevents moth infestation regardless of fabric type.

Application Directions: Remove lid to open [plastic case] [container] (Figure 1). Cut Open Pouch (Figure 2). While holding cake by wrapper, transfer into the plastic [case][container] (Figure 3). Replace lid. (Figure 4). Place the filled plastic case at the top of the storage container. The vapors work downward. Keep product in airtight space for a minimum of 7 days. When product has dissipated replace with new unit or refill this container with ENOZ Moth Cake Refills. Odor quickly vanishes when articles are aired.

Retreatment: Since moths are active all year, replenish air-tight containers and bags 2 times a year

STORAGE AND DISPOSAL

Pesticide Storage: Store in the original container, in a dry place inaccessible to children and pets.

Pesticide Disposal and Container Handling: Nonrefillable container. Do not reuse or refill this container except as allowed in the directions for use. **If empty:** Place in trash or offer for recycling if available. **If partly filled:** Call your local solid waste agency for disposal instructions. Never place unused product down any indoor or outdoor drain.

PRECAUTIONARY STATEMENTS

Hazards to Humans and Domestic Animals

WARNING. Causes substantial but temporary eye injury. Wear protective eyewear. Harmful if swallowed. Harmful if inhaled. Do not get in eyes or on clothing. Avoid contact with skin. Avoid breathing dust. Wash thoroughly with soap and water after handling and before eating, drinking, chewing gum, using tobacco or using the toilet. Remove and wash contaminated clothing before reuse.

NOTICE: This product contains a chemical known to the State of California to cause cancer.

FIRST AID	
If in eyes	<ul style="list-style-type: none"> • Hold eye open and rinse slowly and gently with water for 15-20 minutes. • Remove contact lenses, if present, after the first 5 minutes, then continue rinsing eye. • Call a poison control center or doctor for treatment advice.
If swallowed	<ul style="list-style-type: none"> • Call poison control center or doctor immediately for treatment advice. • Have person drink several glasses of water. • Do not induce vomiting. • Do not give anything by mouth to an unconscious person.
If on skin or clothing	<ul style="list-style-type: none"> • Take off contaminated clothing. • Rinse skin immediately with plenty of water for 15-20 minutes. • Call a poison control center or doctor for treatment advice.
If inhaled	<ul style="list-style-type: none"> • Move person to fresh air. • If person is not breathing, call 911 or an ambulance, then give artificial respiration, preferably mouth-to-mouth if possible. • Call a poison control center or doctor for treatment advice.
HOT LINE NUMBER	
Have the container or label with you when calling a poison control center or doctor, or going for treatment. You may also contact the National Pesticide Information Center (NPIC) at 1-800-858-7378 for emergency medical treatment information.	
NOTE TO PHYSICIAN	
Probable mucosal damage may contraindicate the use of gastric lavage.	

PHYSICAL OR CHEMICAL HAZARDS: Combustible. Do not use or store near heat or open flame.

EPA Reg. No. 1475-7
 EPA Est. No. 1475-MO-1, 88559-CHN-1,86723-PHL-1

Willert Home Products
 4044 Park Avenue
 St. Louis, MO 63110

©2021

SUB-LABEL 5

**ENOZ® Moth Cake
ENOZ® Since 1918 Moth Cake
[with peel-off label]
6 oz. cake**

[FRONT LABEL]

[Peel here to remove]

Kills Clothes Moths and Carpet Beetles and Their Eggs and Larvae,
When Used In Air-Tight Containers
Hangs Easily In Clothing Storage Containers
This product can treat up to 18.8 cu. ft.
No Clinging Odor
Protects Clothing

ACTIVE INGREDIENT: p-Dichlorobenzene.....	99.90%
OTHER INGREDIENTS	<u>00.10%</u>
TOTAL.....	100.00%

KEEP OUT OF REACH OF CHILDREN

WARNING

See back panel for additional precautionary statements.

Net Wt. 6 oz. (170g)

[BACK LABEL]

DIRECTIONS FOR USE

It is a violation of Federal law to use this product in a manner inconsistent with its labeling.

IMPORTANT: Keep out of reach of children and pets. Do not place in areas accessible to children and pets.

Use Restrictions: This product can treat up to 18.8 cubic feet. Kills clothes moths and carpet beetles and their eggs and larvae in clean, airtight containers which could include chests, trunks, garment bags and storage closets. Do not use dry cleaning bags, garbage bags or other containers that allow vapors to escape into occupied rooms. If the product’s smell persists after placing it inside a container and sealing it, that container is not airtight and is not suitable for applying this product. This product can damage some plastics, use only in polyethylene or polypropylene containers. Do not mix p-dichlorobenzene or use it together with other moth preventive chemicals.

Pre-Application Directions: For all fabric types: Dry clean, wash or brush articles to be protected prior to storage.

Application Directions: Peel away front and back labels to release vapors. Hang or place unit at the top of the storage container. The vapors work downward. Keep product in airtight space for a minimum of 7 days. When product has dissipated replace with new unit. Odor quickly vanishes when articles are aired.

Retreatment: Since moths are active all year, replenish air-tight containers and bags 2 times a year.

STORAGE AND DISPOSAL

Pesticide Storage: Store in the original container, in a dry place inaccessible to children and pets.

Pesticide Disposal and Container Handling: Nonrefillable container. Do not reuse or refill this container. **If empty:** Place in trash or offer for recycling if available. **If partly filled:** Call your local solid waste agency for disposal instructions. Never place unused product down any indoor or outdoor drain.

PRECAUTIONARY STATEMENTS**Hazards to Humans and Domestic Animals**

WARNING. Causes substantial but temporary eye injury. Wear protective eyewear. Harmful if swallowed. Harmful if inhaled. Do not get in eyes or on clothing. Avoid contact with skin. Avoid breathing dust. Wash thoroughly with soap and water after handling and before eating, drinking, chewing gum, using tobacco or using the toilet. Remove and wash contaminated clothing before reuse.

NOTICE: This product contains a chemical known to the State of California to cause cancer.

FIRST AID	
If in eyes	<ul style="list-style-type: none"> • Hold eye open and rinse slowly and gently with water for 15-20 minutes. • Remove contact lenses, if present, after the first 5 minutes, then continue rinsing eye. • Call a poison control center or doctor for treatment advice.
If swallowed	<ul style="list-style-type: none"> • Call poison control center or doctor immediately for treatment advice. • Have person drink several glasses of water. • Do not induce vomiting. • Do not give anything by mouth to an unconscious person.
If on skin or clothing	<ul style="list-style-type: none"> • Take off contaminated clothing. • Rinse skin immediately with plenty of water for 15-20 minutes. • Call a poison control center or doctor for treatment advice.
If inhaled	<ul style="list-style-type: none"> • Move person to fresh air. • If person is not breathing, call 911 or an ambulance, then give artificial respiration, preferably mouth-to-mouth if possible. • Call a poison control center or doctor for treatment advice.
HOT LINE NUMBER	
Have the container or label with you when calling a poison control center or doctor, or going for treatment. You may also contact the National Pesticide Information Center (NPIC) at 1-800-858-7378 for emergency medical treatment information.	
NOTE TO PHYSICIAN	
Probable mucosal damage may contraindicate the use of gastric lavage.	

PHYSICAL OR CHEMICAL HAZARDS: Combustible. Do not use or store near heat or open flame.

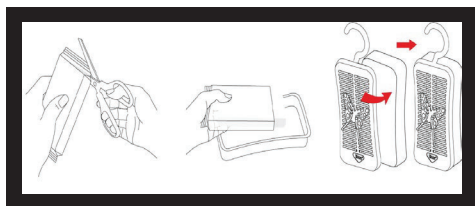
EPA Reg. No. 1475-7
EPA Est. No. 1475-MO-1
©2021

Willert Home Products
4044 Park Avenue
St. Louis, MO 63110

SUB-LABEL 6
ENOZ® Moth Cake Refill[s]
ENOZ® Since 1918 Moth Cake Refill[s]

Marketing Claims:

- Protects Clothing
- Kills Clothes Moths and Carpet Beetles and Their Eggs and Larvae,
- Aids in Mildew Control, When Used in Air-Tight Containers
- Each Refill can treat up to 18.8 cu. ft.
- Contains x Refills [x = # of refills in container]
- No mess
- Convenient Refill[s] [For Enoz Moth Cake Plastic Case]



- [Moth Cake] Refills for Plastic Hanger
- Refills available at shop.willert.com
- For Use in Closets, Wardrobes and Garment Bags

ACTIVE INGREDIENT: p-Dichlorobenzene.....99.90%
 OTHER INGREDIENTS:.....00.10%
 TOTAL:.....100.00%

KEEP OUT OF REACH OF CHILDREN
 WARNING

See back panel for additional precautionary statements.

Net Weight: 6 oz. (170g)
 12 oz. (340g)
 1 lb. 2 oz. (510g)
 1 lb. 8 oz. (680g)

DIRECTIONS FOR USE

It is a violation of Federal law to use this product in a manner inconsistent with its labeling. **IMPORTANT: Keep out of reach of children and pets. Do not place in areas accessible to children and pets.**

Use Restrictions: Each refill can treat up to 18.8 cubic feet. Kills clothes moths and carpet beetles and their eggs and larvae in clean, airtight containers which could include chests, trunks, garment bags and storage closets. Do not use dry cleaning bags, garbage bags or other containers that allow vapors to escape into occupied rooms. If the product’s smell persists after placing it inside a container and sealing it, that container is not airtight and is not suitable for applying this product. This product can damage some plastics, use only in polyethylene or polypropylene containers. Do not mix p-dichlorobenzene or use it together with other moth preventive chemicals.

Pre Application Directions: For all fabric types: Dry clean, wash or brush articles to be protected prior to storage. Prevents moth infestation regardless of fabric type.

Application Directions: Cut open [package][pouch]. While holding cake by the wrapper, transfer into the plastic case. Place the filled plastic case at the top of the storage container. The vapors work downward. Keep

product in airtight space for minimum of 7 days. When cake has dissipated replace with new unit. Odor quickly vanishes when articles are aired.

Retreatment: Since moths are active all year, replenish air-tight containers and bags 2 times per year.

STORAGE AND DISPOSAL

Pesticide Storage: Store in the original container, in a dry place inaccessible to children and pets. **Pesticide Disposal and Container Handling.** Non-refillable container. Do not reuse or refill this container. **If empty:** Place in trash or offer for recycling if available. **If partly filled.** Call your local solid waste agency for disposal instructions. Never place unused product down any indoor or outdoor drain.

PRECAUTIONARY STATEMENTS

HAZARDS TO HUMANS AND DOMESTIC ANIMALS

WARNING. Causes substantial but temporary eye injury. Wear protective eyewear. Harmful if swallowed. Harmful if inhaled. Do not get in eyes or on clothing. Avoid contact with skin. Avoid breathing dust. Wash thoroughly with soap and water after handling and before eating, drinking, chewing gum, or using tobacco or using the toilet. Remove and wash contaminated clothing before reuse.

NOTICE: This product contains a chemical known to the State of California to cause cancer.

FIRST AID	
If in eyes	<ul style="list-style-type: none"> • Hold eye open and rinse slowly and gently with water for 15-20 minutes. • Remove contact lenses, if present, after the first 5 minutes, then continue rinsing eye. • Call a poison control center or doctor for treatment advice.
If swallowed	<ul style="list-style-type: none"> • Call poison control center or doctor immediately for treatment advice. • Have person sip a glass of water if able to swallow. • Do not induce vomiting unless told to do so by a poison control center or doctor. • Do not give anything by mouth to an unconscious person.
If on skin or clothing	<ul style="list-style-type: none"> • Take off contaminated clothing. • Rinse skin immediately with plenty of water for 15-20 minutes. • Call a poison control center or doctor for treatment advice.
If inhaled	<ul style="list-style-type: none"> • Move person to fresh air. • If person is not breathing, call 911 or an ambulance, then give artificial respiration, preferably mouth-to-mouth if possible. • Call a poison control center or doctor for treatment advice.
HOT LINE NUMBER	
Have the container or label with you when calling a poison control center or doctor, or going for treatment. You may also contact the National Pesticide Information Center (NPIC) at 1-800-858-7378 for emergency medical treatment information.	
NOTE TO PHYSICIAN	
Probable mucosal damage may contraindicate the use of gastric lavage.	

PHYSICAL OR CHEMICAL HAZARDS: Combustible. Do not use or store near heat or open flame.

EPA Reg. No. 1475-7
 EPA Est. No. 1475-MO-1, 88559-CHN-1, 86723-PHL-1
 ©2021

Willert Home Products
 4044 Park Ave.
 St. Louis, MO 63110