

NET CONTENTS  
1 LIQUID PINT

**HOW TO USE:** Spray early in spring. Repeat every 10 to 14 days. Spray leaves and plant parts, thoroughly. Commonly used fungicides are compatible with this spray and can be combined with it.

**MIXING DIRECTIONS:** Determine amount of spray desired. First, place concentrate in sprayer at rate of 1 ounce (2 tablespoonsful) per gallon of water. Then, add water. No need to stir.

**NOTE:** Take care not to spill or splash concentrate on skin. If this occurs, wash immediately with soap and water. Immediately discard bottle when empty. Do not re-use.

U.S. PAT. 2,941,444

# TRI-CIDE

## SYSTEMIC INSECT SPRAY

Containing META-SYSTOX-R

**KILLS INSECTS AND MITES (attacking ornamentals, roses and other flowers) THREE WAYS\***

**ON SPRAY CONTACT AND SYSTEMICALLY**

Japanese beetles  
Moth caterpillars  
Twospotted spider mites  
White flies  
Leafhoppers

**ON SPRAY CONTACT AND RESIDUALLY**

Japanese beetles  
Moth caterpillars  
Rose chafers  
Fall armyworms  
White flies  
Cotton bollworms  
Scale insects  
Trips  
Squash bugs  
Leaf miners  
Triat caterpillars  
Fire beetles

**\*1. CONTACT  
KILLS INSECTS  
AND MITES ON  
PLANT WHEN  
SPRAYED**



**\*2. SYSTEMIC  
SPRAY IS ABSORBED INTO  
PLANT'S SYSTEM, CIRCULATES TO KILL SUCKING  
PESTS FOR 10 TO 14 DAYS**



**\*3. RESIDUAL  
KILLS CHEWING  
INSECTS WITH  
RESIDUE ON  
LEAVES AND  
STEMS**



**WARNING:** May be harmful if swallowed or inhaled. Hazardous by skin absorption. Do not get in eyes, on skin, or clothing. Do not breathe spray mist. After use, wash thoroughly with soap and warm water. Should poisoning occur, obtain prompt medical aid. Atropine is antidotal. Wash clothing with soap and water before re-wearing.

Avoid contamination of foods, feeds. DO NOT USE ON VEGETABLES, OTHER EDIBLE PLANTS.

This product is toxic to fish and wildlife. Keep out of lakes, streams and ponds. Apply this product only as specified on this label.

NET CONTENTS  
1 LIQUID PINT  
HO 85

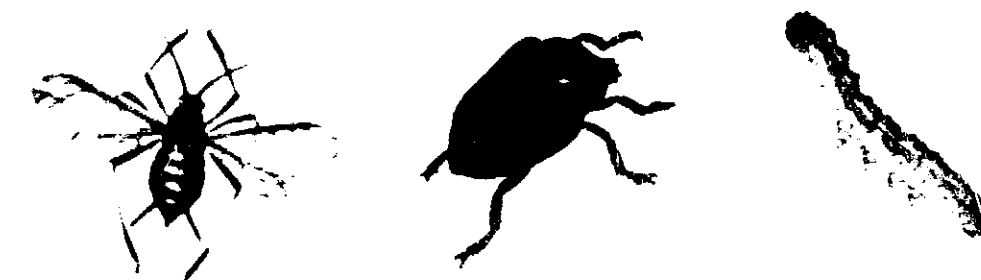
\$298

# TRI-CIDE

## SYSTEMIC INSECT SPRAY

MAKES UP TO 16 GALLONS

**3-WAY INSECT CONTROL FOR FLOWERS & SHRUBS \***



© Lilly

# TRI-CIDE

SYSTEMIC INSECT SPRAY

1. CONTACT KILLS INSECTS AND MITES ON PLANT WHEN SPRAYED



1. CONTACT  
KILLS INSECTS  
AND MITES ON  
PLANT WHEN  
SPRAYED

2. SYSTEMIC  
SPRAY IS ABSORBED INTO  
PLANT'S SYSTEM, CIRCULATES TO KILL SUCKING  
PESTS FOR 10 TO 14 DAYS



3. RESIDUAL  
KILLS CHEWING  
INSECTS WITH  
RESIDUE ON  
LEAVES AND  
STEMS



WARNING: May be harmful if swallowed or absorbed. Keep out of reach of children. Do not use on food crops. After use wash thoroughly with soap and water. Wash hands after use. Do not use on food crops. Do not use on food crops.

ALL OTHERS: Do not use on food crops. DO NOT USE ON VEGETABLES OR OTHER EDIBLE PLANTS.

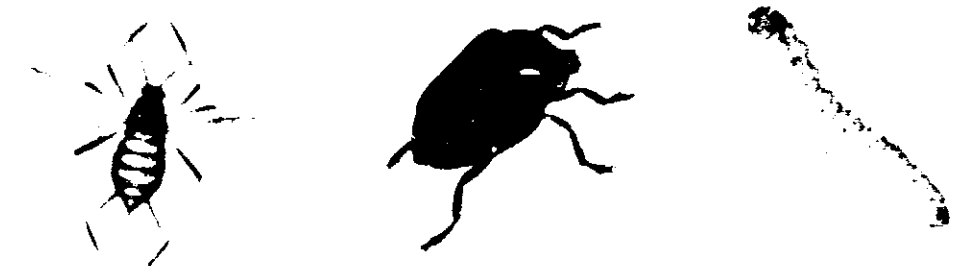
This product is toxic to fish and wildlife. Keep out of lakes, streams, ponds. Apply only to ground away from water.

# TRI-CIDE

SYSTEMIC INSECT SPRAY

MAKES UP TO 16 GALLONS

3-WAY INSECT CONTROL FOR FLOWERS & SHRUBS \*



© Lilly