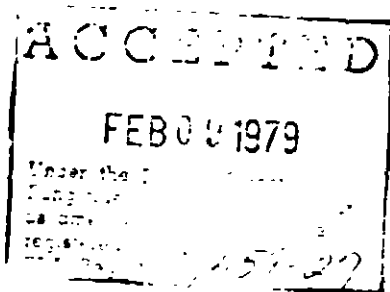


BEST AVAILABLE COPY

# Bullen



## COMMERCIAL AND INSTITUTIONAL FORMULA

DRIVES INSECTS FROM THEIR HIDING PLACES. MADE ESPECIALLY FOR INDUSTRIAL AND INSTITUTIONAL USE — HOTELS, MOTELS, SCHOOLS, COLLEGES, STORES, SUPER MARKETS, OFFICES, HOSPITALS AND MANUFACTURING PLANTS

A HIGHLY EFFECTIVE, READY TO USE FORMULATION FOR CONTROL OF THE INSECTS LISTED BELOW — EVEN THOSE RESISTANT TO CERTAIN CHLORINATED HYDRO-CARBON AND PHOSPHATE INSECTICIDES.

**CAUTION: COMBUSTIBLE MIXTURE.** Do not use or store near heat or open flame. Do not smoke while spraying.

**RESTRICTIONS:** Do not use as a space spray. Use with adequate ventilation. Do not allow children to contact treated surfaces until thoroughly dry. Do not store near food or food products. Avoid contamination of food, food processing equipment and food handling surfaces. Do not apply to animals. Remove pets and cover fish before spraying. Do not spray plants.

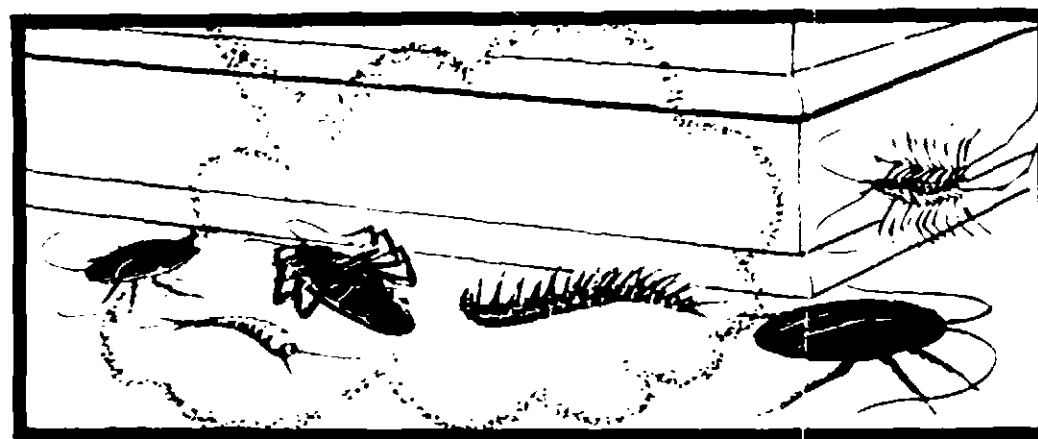
**CAUTION:** Harmful if swallowed, inhaled or absorbed through the skin. Do not get in eyes, on skin or on clothing. In case of contact, wash immediately with soap and warm water before eating or smoking. Wash all contaminated clothing with soap and hot water before re-use. Do not use in edible products area of food processing plants. Use in other areas only when not processing. Should illness occur, get prompt medical aid.

**TO PHYSICIAN —** Atropine sulfate is antidotal.

EPA Reg. No. 1459-27

EPA Est. No. 1459-IL-1

EPA Est. No. 1459 PA 1



## ACTIVE INGREDIENTS:

o-Isopropoxyphenyl methylcarbamate*	10%
2-Butoxyethanol	90%
Petroleum distillates	90.0%
Total	100.0%

\*BAYGON is the registered trademark of Farbenfabriken Bayer A.G.,  
Chemagro Corporation Licensee - U.S. Patent No. 3,111,539

**CAUTION: Keep Out of Reach of Children**  
SEE SIDE PANEL FOR ADDITIONAL CAUTIONS

MANUFACTURED BY

**BULLEN CHEMICAL COMPANY, FOLCROFT, PA. 19032**

**PHONE 215 SA 4-8100**

## IMPORTANT — USE AS DIRECTED

Apply with low pressure sprayer equipped with coarse spray nozzle. Spray surface only until wet. Avoid excessive run-off. Apply to all infested areas, to breeding sites and harborages. Spray adjacent exposed surfaces where insects may crawl when they come out of hiding.

**TO KILL COCKROACHES:** Spray infested area thoroughly, then baseboards, cracks and crevices; around window and door frames; undersides of shelves, drawers, work tables; behind and beneath cabinets, refrigerators, sinks and stoves, in and around waste containers, switch panels, junction boxes, floor drains and other possible hiding or resting places.

**TO KILL ANTS:** Indoors—spray trails and places where ants appear to be entering the building. Outdoors—spray hills and runways.

**TO KILL CADELLES, CIGARETTE BEETLES, DERMESTIDS, DRUG-STORE BEETLES, INDIAN MEAL MOTHS, RED FLOUR BEETLES, SAW-TOOTHED GRAIN BEETLES AND WEEVILS:** (Exposed stages): Remove dishes and packaged food. Spray floors and walls of the infested area thoroughly, with special attention to cracks, crevices, corners and perimeters. Sanitation and dust control are of prime importance. Fumigate or destroy infested products. Allow treated areas to dry before replacing dishes and food.

**TO KILL SILVERFISH, FIREBRATS AND PAPER LICE:** Spray localized infested areas thoroughly. Apply behind and beneath book-cases and into corners of storage areas.

**TO KILL BROWN DOG TICKS:** Spray pets' sleeping area, and surrounding area including window and door frames, all cracks and crevices. Replace with fresh bedding after spraying. Repeat when needed. Do not spray animals.

**TO KILL CLOVER MITES, CRICKETS, EARWIGS, MILLIPEDES, CENTIPEDES, SOWBUGS, SCORPIONS AND SPIDERS:** Spray interior and exterior perimeter of infested areas thoroughly. For clover mites pay special attention to window sills.

**TO KILL FLEAS, FLIES, GNATS, MOSQUITOS, PUNKIES AND SANDFLIES (Outdoors only):** Spray infested areas thoroughly. Include outside surfaces of screens, doors, window frames, foundations and other areas where insects may enter.

**NET: U.S. GALLONS**