

[1431-26] 2 pages



It is highly effective in bakeries, dairies, and other food processing plants.

7/27/71 DIRECTIONS

1431-26

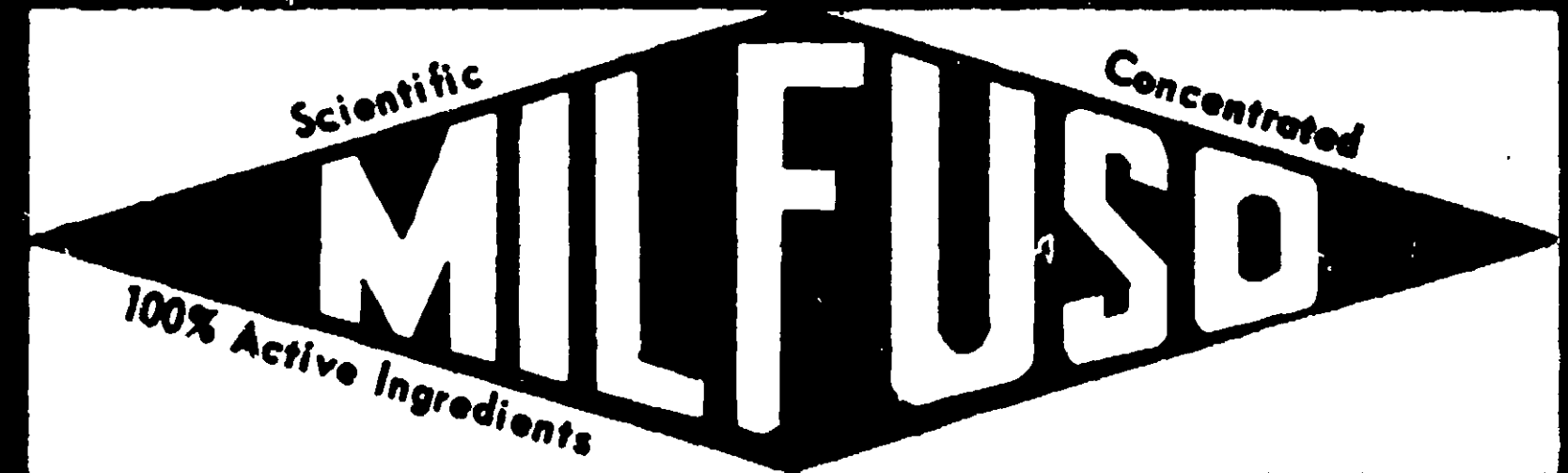
TO KILL COCKROACHES, ANTS, WATERBUGS, SILVER-FISH, SPIDERS, CRICKETS, EXPOSED WEEVILS, BED-BUGS, Fleas, Mosquitoes, Residual Insecticide for treating cracks, crevices, corners, under pipes, under fixtures, under counters, and wherever possible direct at insects. A thorough and repeated treatment of infested areas, including walls and ceiling, the various surfaces frequented by these pests, should be made and repeated as often as necessary. Repeated applications should be made. A thorough and repeated treatment of infested areas, including walls and ceiling, the various surfaces frequented by these pests, should be made and repeated as often as necessary. Repeated applications should be made.

FOR CONTROL OF MOSQUITOES, use in areas where they breed.

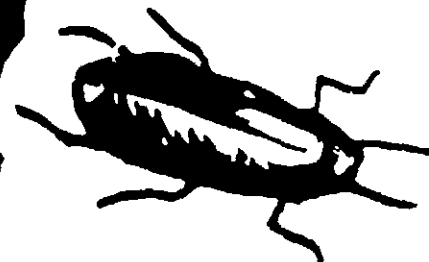
FOR CONTROL OF FLEAS, GNATS, BLACK FLIES, SAND-FLIES, and other biting insects, use in areas where they breed.

CAUTION: Do not use or store near open flame. Avoid contamination of feed and foodstuff. Remove or protect food during treatment. Do not spray while food plants are in operation. Food handling equipment should be protected or washed before reuse. Harmful if swallowed. Do not remain in enclosed treated areas. Ventilate after treatment is completed.

Do not reuse empty containers. Destroy by crushing. Bury or discard in safe place.



FOG GENERATOR INSECT SPRAY



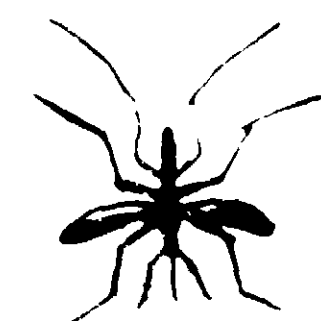
ROACHES



GNATS



MOTHS



MOSQUITOES



WEEVILS



BEDBUGS



FLIES

100% ACTIVE INGREDIENTS

Petroleum Distillate

*Piperonyl Butoxide Technical

*Consists of (Butylcarbityl) (6-Propylpiperonyl)

ether and related compounds

Pyrethrins

CAUTION: KEEP OUT OF REACH OF CHILDREN.

See side panel for additional cautions.

MANUFACTURED BY

THE MILFRED CO.

CONTENTS 5 GALLONS

PITTSBURGH, PA.

[1431-26]

DIRECTIONS

TO KILL ADULT MOTHS—(Always use Milfred machine). Remove clothing from infested areas. Brush thoroughly and air in the open. After clothing has been thoroughly brushed and aired, hold nozzle of Milfred Fog Machine not less than 6 ft. away from fabric and adjust to finest mist to avoid possible staining and spray all surfaces with particular emphasis on seams, pleats and folds. Spray may stain fabric light or pastel shade if applied too heavily. After spraying store garments in moth proof container for best results. Spray thoroughly all surfaces both interior and exterior of empty closet or storage space directing vapor into all cracks. Keep doors closed for 30 minutes afterwards. Repeat application in 30 days.

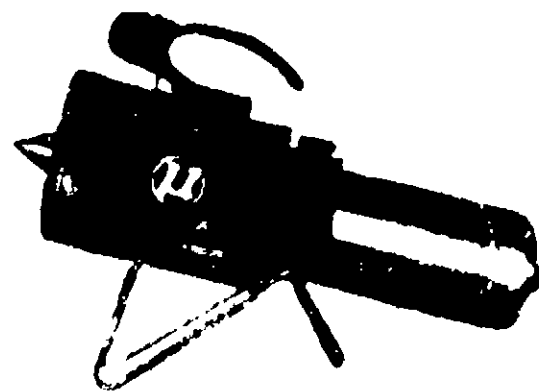
MILFUSO Fog Generator insect Spray may be applied by brush for protection against crawling insects.

MILFUSO IS EFFECTIVE EVERYWHERE

*Satisfaction Guaranteed
if Used as Directed*

Can be used for SPRAYING with

MILFRED FOG GENERATORS



U.S.D.A. Registration No. 1431-26



Milfuso is widely used in restaurants.

7/27/71

1431-26



Milfuso is ideal for homes, offices, and small stores.