

PENTA CONCENTRATE

KEEP OUT OF REACH OF CHILDREN
WARNING

See Side Panel For Additional Precautionary Statements

ACTIVE INGREDIENTS

Pentachlorophenol*	35.26%
Other chlorophenols and related compounds	4.10%
Petroleum hydrocarbons	41.00%
INERT INGREDIENTS	<u>19.64%</u>
Total	100.00%

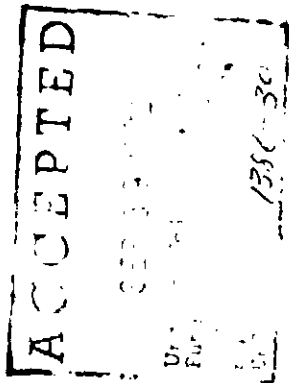
*CONTAINS 41% TECHNICAL PENTACHLOROPHENOL AS DEFINED IN FEDERAL SPECIFICATION TT-W-570

Net Volume: 1 Gallon
Prod. 501

EPA Reg. No. 1386-30
EPA Est. No. 1386-OH-1



UNIVERSAL COOPERATIVES, INC.
MINNEAPOLIS, MN 55440



**PRECAUTIONARY
STATEMENTS
HAZARDS TO HUMANS
AND DOMESTIC ANIMALS**

WARNING

Harmful if swallowed or absorbed through skin. Causes eye and skin irritation. Do not breathe vapor or spray mist. Do not get in eyes, on skin or on clothing. Wear rubber gloves and protective clothing when applying or when handling freshly treated lumber.

**STATEMENT OF
PRACTICAL TREATMENT**

If swallowed: Give 1 or 2 glasses of water and induce vomiting by touching back of throat with finger. Do not induce vomiting or give anything by mouth to an unconscious person. Call a physician. **If on skin:** Wash with soap and water. Remove and wash contaminated clothing before reuse. **If in eyes:** Immediately flood with water for at least 15 minutes. Call a physician. **If inhaled:** Remove victim to fresh air. Apply respiration if indicated.

ENVIRONMENTAL HAZARDS

This product is toxic to fish and wildlife. Do not apply directly to water. Do not contaminate water by cleaning of equipment or disposal of wastes.

**PHYSICAL OR
CHEMICAL HAZARDS**

Do not use or store near heat or open flame.

STORAGE AND DISPOSAL

Do not store inside the home. Do not reuse empty container. Wrap container and put in trash collection.

NOTICE

Use only for the purposes and in compliance with the limitations, cautions, or warnings stated on this label.

Penta Concentrate

DIRECTIONS FOR USE

It is a violation of Federal law to use this product in a manner inconsistent with its labeling.

Penta Concentrate is a clean petroleum oil solution containing 41% of technical pentachlorophenol to be used to protect wood against dry rot and mildew which cause decay and stains, termites (both as a wood preservative prior to construction and as a soil treatment), and powder post beetles.

Before using, mix or dilute one part of Penta Concentrate with ten parts by volume of a suitable petroleum solvent such as naphtha, kerosene, light fuel oil, mineral spirits, range oil, or petroleum equivalent.

Wear protective clothing and rubber gloves when applying or when handling freshly treated lumber.

WARNING: Do not allow the penta solution or spray to contact desirable or beneficial plants. Do not apply to or use treated wood for fruit and vegetable containers, plant stakes, flats, hotbed frames, and greenhouse benches.

FENCE POSTS AND POLES: Posts or poles should be peeled or barked and seasoned until dry. Soak posts and poles in the diluted penta solution for 48 hours, preferably in a vertical position with large end downward.

MILL WORK: To protect windows, doors, screens, door frames, window frames, and tool handles, give the unpainted lumber a 3-minute dip, or two thorough brushings or sprayings with the diluted penta solution.

FLOORS, SUB-FLOORS, SILLS, STUDDING, JOISTS OR OTHER BUILDING SUPPORTS: Dip or spray unpainted lumber with the diluted penta solution before construction. If this is impossible, spray, swab or brush, both interior and exterior, particularly all joists and sills, with two liberal coats of the diluted penta solution. Allow 2 or 3 days for each to dry. If wood is immersed, treat five minutes per inch of thickness. If treated wood is to be painted, use clear, clean naphtha or mineral spirits for the dilution of Penta Concentrate. Wood intended for use in contact with the ground should receive at least two heavy brush coats, if such wood cannot be dipped.

NOTE: All wood should be normally dry before treating. Estimated coverage: 5 to 10 gallons per 1,000 board feet for open tank treating; 200 square feet per gallon for brush or spray application. Do not paint or varnish wood that has been treated for at least 10 days.

SUBTERRANEAN TERMITE CONTROL — DIRECTIONS FOR HOMEOWNER USE: To control termites in buildings with basements or crawl-spaces, first remove all cellulose material and wood in contact with the soil and replace with penta treated wood (treated as above), or concrete. Destroy termite tubes on inside and outside of walls of the building. Remove all wood debris and wood forms. Around piers, pipes, chimney bases and along foundations of poured concrete, dig a trench 6 inches wide and 4 inches deep. For brick and block foundations dig the trench about 12 inches deep. If footing is more than 12 inches deep, make holes with a crowbar, pipe, or rod about one foot apart that extend from the trench bottom to the top of the footing. Make holes closer in hard-packed clay soils. NEVER DIG BELOW THE TOP OF THE FOOTING. Apply the solution in the trench at a rate of 4 gallons per 10 linear feet per foot of depth. Apply half of this to the back-fill. Likewise treat along the inside of foundations of crawl-space buildings. Cover treated soil with a thin layer of untreated soil.

For raised porches, terraces, and entrance slabs, drill holes at one foot intervals, 6 inches from the foundation, and pour one-half gallon of solution into each hole. Refill holes. Slabs with heat ducts or radiating heat pipes should be treated by commercial pest control operators.

The object is to establish a treated soil barrier which will prevent termite entry. Other critical areas may also require treatment, particularly if there are inaccessible areas, basements or slab-type construction. It is suggested that you contact the Agricultural Cooperative Extension Service for advice or consult a Commercial Pest Control Service.

Avoid contamination of public and private water supplies by following these precautions: Do not allow a hose or any type of faucet extension to reach into the termite chemical solution while filling or mixing this material with water. Use anti-back-flow or anti-siphonage equipment on all filling equipment. These devices can be purchased at hardware or plumbing supply stores. Use of anti-back-flow equipment will help to insure that the user of this product will not contaminate domestic water supplies. Refer to Federal (Federal Housing Administration), State, and local specifications for safe distances of treatment areas from wells. Soil in the vicinity of wells, cisterns or ponds should not be treated if it is water saturated, subject to excessive saturation due to an accumulation of water or if the soil to be treated around the perimeter of the structure is at a grade lower than surrounding yard or property area. If this is the situation treat as follows: **Do Not Apply Under Pressure.** Soil should be removed to an area safe from well or domestic water contamination, treated, allowed to stand undisturbed for two to four hours then returned to the trench which has been lined with 4 mil plastic sheeting. Be careful not to puncture the plastic sheeting when returning soil to the trench. Do not treat structures that contain cisterns or wells.

Trees, shrubs, or flowers planted nearer than 3 feet should be protected from treated soil by tar paper or heavy kraft paper. Saturating the soil with water the day before treatment minimizes danger of injury.

TO CONTROL POWDER POST BEETLES: Spray the diluted penta solution directly on infested wood using a compressed air sprayer and holding the nozzle about 3 inches from the surface being treated. A brush may be used to apply the penta solution to small areas. Apply thoroughly, wetting all surfaces with two spray applications or brush coats. One gallon of the diluted penta solution will cover about 250 square feet of rough surface or 450 square feet of finished surfaces.

905014-B-82



UNIVERSAL COOPERATIVES, INC.