



PENTA CONCENTRATE

INGREDIENTS

ACTIVE INGREDIENTS:

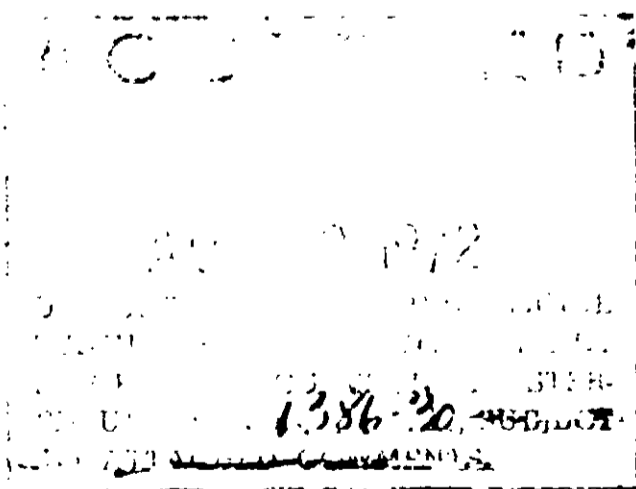
Pentachlorophenol*	35.26%
Other chlorophenols and related compounds	4.10%
Petroleum hydrocarbons	41.00%

INERT INGREDIENTS	19.64%
Total	100.00%

*CONTAINS 41% TECHNICAL PENTACHLOROPHENOL
AS DEFINED IN FEDERAL SPECIFICATION TT-W-570

WARNING

KEEP OUT OF REACH OF CHILDREN
See Remaining of WARNING Statements on Side Panel
EPA Reg. No. 1386-30



Net Volume

5 U.S. Gallons Liquid

FC-86A-S-2

PROD. 501

Distributed By

UNITED CO-OPERATIVES, INC., ALLIANCE, OHIO 44601

TO CONTROL TERMITES:—First, remove all cellulose material and wood in contact with the soil and replace with penta treated wood (treated as above), or concrete. Destroy termite tubes on inside and outside of walls of the building and spray under building at the rate of 2 gallons of diluted penta solution per 5 square feet of surface. Where construction permits, dig a trench directly against both sides of all foundations and around piers. This trench should be 8 to 10 inches wide and 30 inches deep, but not deeper than the top of the footing. Spray or soak the soil on both sides and in bottom of trench and replace dirt, respraying at 6-inch intervals as the soil is replaced. Use 1 gallon per linear foot of trench for trenches over 15 inches in depth; ½ gallon per linear foot for shallower trenches. Trees, shrubs, or flowers planted nearer than 3 feet should be protected from the treated soil by tar paper or heavy kraft paper. Saturating the soil with water the day before treatment minimizes danger of injury. For treating infestations under concrete floors and porches, drill holes near the house foundation at 2-foot intervals and inject the diluted penta solution at the rate of 1 gallon per linear foot. Inspect treated areas annually and re-treat when necessary.

The objective is to establish a treated soil barrier which will prevent termite entry. Other critical areas may also require treatment. It is suggested that you consult the State Extension Service for advice.

TO CONTROL POWDER POST BEETLES: Spray the diluted penta solution directly on infested wood, using a compressed air sprayer, and holding the nozzle about 3 inches from the surface being treated. A brush may be used to apply penta solution to small areas. Apply thoroughly, wetting all surfaces with two spray application or brush coats. One gallon of the diluted penta solution will cover about 250 square feet of rough surface or 450 square feet of finished surface.

WARNING: Do not allow the penta solution or spray to contact desirable or beneficial plants. Do not apply to or use treated wood for fruit and vegetable containers, plant stakes, flats, hotbed frames, and greenhouse benches.

WARNING

Harmful if swallowed or absorbed through skin! Causes skin irritation. Do not breathe vapor or spray mist. Do not get in eyes, on skin, or clothing. Wash thoroughly after handling.

This product is toxic to fish and wildlife. Keep out of lakes, streams, or ponds. Do not contaminate water by cleaning of equipment or disposal of wastes.

DESTROY EMPTY CONTAINERS. Do not reuse this container for any purpose. Punch holes in top and bottom of empty containers and burn in a hot fire, outdoors, in an isolated area. The smoke is hazardous. Stay well away from the smoke. Crush burned containers, when cooled, under wheels of heavy vehicle, and bury deeply in an isolated area on non-crop land well away from water supplies.

NOTICE

Use only for the purposes and in compliance with the limitations, cautions or warnings stated on this label.

ACCEPTED
8-30-72
1386-30

UNICO Penta Concentrate

DIRECTIONS FOR USE

UNICO Penta Concentrate is a clean petroleum oil solution containing 41% of technical pentachlorophenol to be used to protect wood against dry rot and mildew which cause decay and stains, termites (both as a wood preservative prior to construction and as a soil treatment), and powder post beetles.

Before using, mix or dilute one part of UNICO Penta Concentrate with ten parts by volume of a suitable petroleum solvent such as naphtha, kerosene, light fuel oil, mineral spirits, range oil, or petroleum equivalent.

Wear protective clothing and rubber gloves when handling the freshly treated lumber.

FENCE POSTS AND POLES—Posts or poles should be peeled or barked and seasoned until dry. Soak posts and poles in the diluted penta solution for 48 hours, preferably in a vertical position with large end downward.

MILL WORK—To protect windows, doors, screens, door frames, window frames, and tool handles, give the unpainted lumber a 3-minute dip, or two thorough brushings or sprayings with the diluted penta solution.

FLOORS, SUB-FLOORS, SILLS, STUDDING, JOISTS, OR OTHER BUILDING SUPPORTS—Dip or spray unpainted lumber with the diluted penta solution before construction. If this is impossible, spray, swab, or brush, both interior and exterior, particularly all joists and sills, with two liberal coats of the diluted penta solution. Allow 2 or 3 days for each to dry. If wood is immersed, treat five minutes per inch of thickness. If treated wood is to be painted, use clear, clean naphtha or mineral spirits for the dilution of UNICO Penta Concentrate. Wood intended for use in contact with the ground should receive at least two heavy brush coats, if such wood cannot be dipped.

NOTE: All wood should be normally dry before treating. Estimated coverage: 5 to 10 gallons per 1,000 board feet for open tank treating; 200 square feet per gallon for brush or spray application. Do not paint or varnish wood that has been treated for at least 10 days.

UNICO

3116172
UNDER THE FEDERAL
INQUIRY AND REGISTERED
EPA REG. NO. 1386-99

BORDEAUX SPRAY POWDER

A dry Bordeaux mixture, of well-balanced formula, uniform in composition, having excellent suspension and adhesive qualities.

INGREDIENTS

ACTIVE INGREDIENTS:	
Copper, expressed as metallic	12.75%
INERT INGREDIENTS	87.25%
<hr/>	
Total	100.00%

CAUTION

KEEP OUT OF REACH OF CHILDREN

See Remainder of CAUTION Statement on Back Panel
USDA Reg. No. 1386-99

NET WEIGHT

4 POUNDS

FC-850-C10-70

PROD. 1207

DISTRIBUTED BY
UNITED CO-OPERATIVES, INC.
ALLIANCE, OHIO 44601

UNICO Bordeaux Spray Powder

DIRECTIONS FOR USE

UNICO Bordeaux Spray Powder is a properly prepared copper fungicide (copper sulphate and hydrated lime) in ready-to-use form to be mixed with water for application as a spray.

To control BLOTCH, BITTER ROT, BLACK ROT, and LATE SCAB of APPLES (after early growing season); BROWN ROT of APRICOTS, PLUMS (except Japanese varieties), and PRUNES; BLACK ROT of GRAPES; and BLIGHT of POTATOES and TOMATOES, use at standard strength from mixing chart below. For apples after early growing season, add hydrated lime at rate equal to Bordeaux Spray Powder used.

To control STRAWBERRY LEAF SPOT, TOMATO LEAF SPOT, and CELERY BLIGHT, use at low strength from chart below.

To control certain LEAF SPOTS AND BLIGHTS of DELPHINIUM, GERANIUM, LAUREL, LILAC, and RHODODENDRON, use at two-third of low strength; for HOLLYHOCK, IVY, PHLOX, and LEAF BLOTCH of PEONY, use at low strength; and for BOXWOOD, CHRYSANTHEMUM, and IRIS LEAF SPOTS, use at standard strength from mixing chart below.

MIXING CHART

Use LEVEL MEASURE in every case.

Amount of Spray Desired	Amount of Bordeaux Spray Powder to Use	
	Low Strength	Standard Strength
1 Quart	1½ to 1¾ Tablespoonfuls	2 to 3 Tablespoonfuls
1 Gallon	6 to 7 Tablespoonfuls	8 to 12 Tablespoonfuls
3 Gallons	1½ to 1¾ Cupfuls	1½ to 2¼ Cupfuls
100 Gallons	6 to 7 Pounds	8 to 12 Pounds

The sprays should be applied to apricots, plums, prunes, and grapes at petal fall and should be repeated at 7 to 10-day intervals according to local weather conditions. Apply to apples only after the early growing season and repeat at 7 to 10-day intervals as conditions favorable of development of diseases warrant. The sprays should be applied to potatoes, tomatoes, strawberries, celery, and to the ornamental flowering plants named before diseases become apparent, and should be repeated at 7 to 10 day intervals as required by conditions favorable to the development of diseases.

To control PEACH LEAF CURL, use at the rate of 12 to 16 pounds per 100 gallons of water (12 to 16 level tablespoonfuls per gallon), and apply in the fall or early spring only, when trees are dormant. DO NOT APPLY AT ANY OTHER TIME.

To control LEAF SPOT ON CHERRIES, use at the rate of 4 pounds per 100 gallons of water (5 level tablespoonfuls per gallon) with an equal amount of hydrated lime. Begin applications at petal fall stage and make 2 or 3 applications at 10 to 14 day intervals and again immediately after harvest.

HOW TO MIX—Wash the powder into the spray tank through strainer during filling operation. Agitate or stir thoroughly. Agitation is required during spray application.

CAUTION

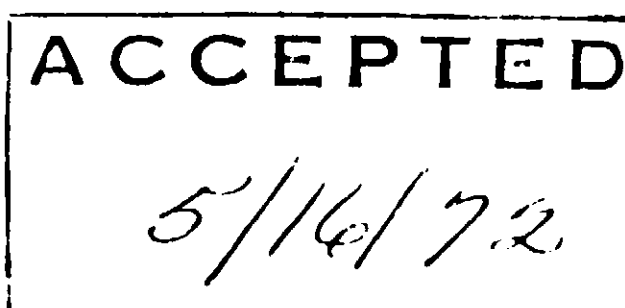
HARMFUL IF SWALLOWED. DO NOT USE FOR SPRAYING OF FOLIAGE OF PEACHES AND JAPANESE PLUMS. DO NOT USE FOR SPRAYING OF APPLES DURING EARLY GROWING PERIOD. BORDEAUX SPRAY POWDER IS NOT RECOMMENDED FOR USE IN EARLY RAINY SEASONS WHEN TEMPERATURE IS BELOW 50 DEGREES F.

DESTROY EMPTY CONTAINERS. Do not reuse this container for any purpose. Burn empty container (paper) in a hot fire, outdoors, in an isolated area. The smoke is hazardous. Stay well away from the smoke.

NOTICE

Use only for the purposes and in compliance with the limitations, cautions or warnings stated on this label.

FC-880-C1070



PROD. 1207

UNCO

PENTA CONCENTRATE

INGREDIENTS

ACTIVE INGREDIENTS:	
Pentachlorophenol*	35.26%
Other chlorophenols and related compounds	4.10%
Petroleum hydrocarbons	41.00%
INERT INGREDIENTS	19.64%
Total	100.00%

*CONTAINS 41% TECHNICAL PENTACHLOROPHENOL AS DEFINED IN FEDERAL SPECIFICATION TT-W-570

WARNING

KEEP OUT OF REACH OF CHILDREN

See Remaining of WARNING Statements on Side Panel

EPA Reg. No. 1384-30

Net Volume

5 U.S. Gallons Liquid

PC-66A-9-72

PROD. 501

Distributed By

TO CONTROL TERMITES: First, remove all cellulose material and wood in contact with the soil and replace with penta treated wood (treated as above), or concrete. Destroy termite tubes on inside and outside of wall of the building and spray under building at the rate of 2 gallons of diluted penta solution per 5 square feet of surface. Where construction permits, dig a trench directly against both sides of all foundations and around piers. This trench should be 8 to 10 inches wide and 30 inches deep, but not deeper than the top of the footing. Spray or soak the soil on both sides and in bottom of trench and replace dirt, respraying at 6-inch intervals as the soil is replaced. Use 1 gallon per linear foot of trench for trenches over 15 inches in depth; 1/2 gallon per linear foot for shallower trenches. Trees, shrubs, or flowers planted nearer than 3 feet should be protected from the treated soil by tar paper or heavy kraft paper. Saturating the soil with water the day before treatment minimizes danger of injury. For treating infestation under concrete floors and porches, drill holes near the house foundation at 2-foot intervals and inject the diluted penta solution at the rate of 1 gallon per linear foot. Inspect treated areas annually and re-treat when necessary.

The objective is to establish a treated soil barrier which will prevent termite entry. Other critical areas may also require treatment. It is suggested that you consult the State Extension Service for advice.

TO CONTROL POWDER POST BEETLES: Spray the diluted penta solution directly on infested wood, using a compressed air sprayer, and holding the nozzle about 3 inches from the surface being treated. A brush may be used to apply penta solution to small areas. Apply thoroughly, wetting all surfaces with two spray application or brush coats. One gallon of the diluted penta solution will cover about 250 square feet of rough surface or 450 square feet of finished surface.

WARNING: Do not allow the penta solution or spray to contact desirable or beneficial plants. Do not apply to or use treated wood for fruit and vegetable containers, plant stakes, flats, hotbed frames, and greenhouse benches.

WARNING

Harmful if swallowed or absorbed through skin! Causes skin irritation. Do not breathe vapor or spray mist. Do not get in eyes, on skin, or clothing. Wash thoroughly after handling.

This product is toxic to fish and wildlife. Keep out of lakes, streams, or ponds. Do not contaminate water by cleaning of equipment or disposal of wastes.

DESTROY EMPTY CONTAINERS: Do not reuse this container for any purpose. Punch holes in top and bottom of empty containers and burn in a hot fire, outdoors, in an isolated area. The smoke is hazardous. Stay well away from the smoke. Crush burned containers, when cooled, under wheels of heavy vehicle, and bury deeply in an isolated area on non-crop land well away from water supplies.

NOTICE

Use only for the purposes and in compliance with the limitations, cautions or warnings stated on this label.

COATED
156 20

UNITED CO-OPERATIVES, INC., ALLIANCE, OHIO 44601



8-30-72

1586-20

UNICO Penta Concentrate

DIRECTIONS FOR USE

UNICO Penta Concentrate is a clean petroleum oil solution containing 41% of technical pentachlorophenol to be used to protect wood against dry rot and mildew which cause decay and stain, termites (both as a wood preservative prior to construction and as a soil treatment), and powder post beetles.

Before using, mix or dilute one part of UNICO Penta Concentrate with ten parts by volume of a suitable petroleum solvent such as naphtha, kerosene, light fuel oil, mineral spirits, range oil, or petroleum equivalent.

Wear protective clothing and rubber gloves when handling the freshly treated lumber.

FENCE POSTS AND POLES—Posts or poles should be peeled or barked and seasoned until dry. Soak posts and poles in the diluted penta solution for 48 hours, preferably in a vertical position with large end downward.

MILL WORK—To protect windows, doors, screens, door frames, window frames, and tool handles, give the unpainted lumber a 3-minute dip, or two thorough brushings or sprayings with the diluted penta solution.

FLOORS, SUB-FLOORS, SILLS, STUDDING, JOISTS, OR OTHER BUILDING SUPPORTS—Dip or spray unpainted lumber with the diluted penta solution before construction. If this is impossible, spray, swab, or brush, both interior and exterior, particularly all joists and sills, with two liberal coats of the diluted penta solution. Allow 2 or 3 days for each to dry. If wood is immersed, treat five minutes per inch of thickness. If treated wood is to be painted, use clear, clean naphtha or mineral spirits for the dilution of UNICO Penta Concentrate. Wood intended for use in contact with the ground should receive at least two heavy brush coats, if such wood cannot be dipped.

NOTE: All wood should be normally dry before treating. Estimated coverage: 5 to 10 gallons per 1,000 board feet for open tank treating; 200 square feet per gallon for brush or spray application. Do not paint or varnish wood that has been treated for at least 16 days.

