

# UNICO

# INSECT SPRAY

Ready-to-Use Household Spray For Flies,  
Mosquitoes, Moths, and Certain Other Insects.

### INGREDIENTS

#### ACTIVE INGREDIENTS

0,0 dimethyl 2, 2 dichlorovinyl phosphate (DDVP)	0.180%
Related Compounds*	0.020%
Piperonyl butoxide, technical**	0.300%
Pyrethrins	0.035%
Petroleum Distillate	99.415%

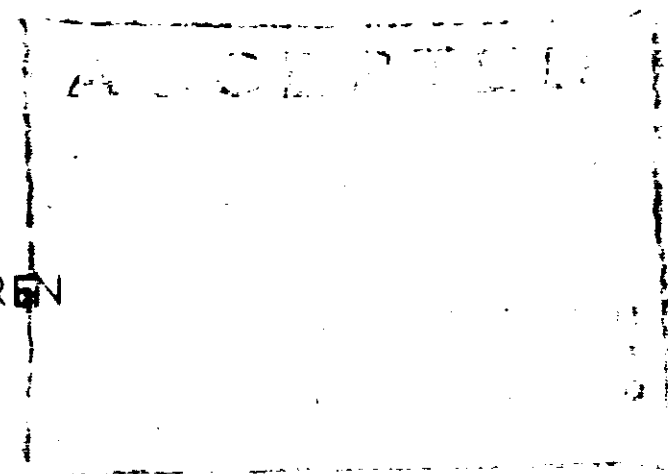
#### INERT INGREDIENTS

\*Equivalent to 0.20% VAPONA R Insecticide  
 \*\*Equivalent to 0.24% butylcarbityl 6-propylpiperonyl  
 and 0.06% related compounds

### CAUTION

KEEP OUT OF REACH OF CHILDREN

See Remainder of CAUTION Statements on Side Panel  
EPA Reg. No. 1386-9



NET VOLUME

1 U.S. GALLON LIQUID

UNICO 7-72

PROD. 2124

MANUFACTURED BY

UNICO I

DIRECTIO

### CAUTION

HARMFUL IF SWALLOWED, INHALED,  
OR ABSORBED THROUGH SKIN. Do not  
breathe vapor or spray mist. Avoid contact  
with skin or eyes. Wash thoroughly with  
soap and water after handling and before  
eating or smoking. Do not contaminate water,  
feed, or foodstuffs.

If swallowed, induce vomiting immediately  
and get medical attention. Atropine is anti-  
dotal. Do not use, spill, pour, or store near  
open flame. Do not store with or near feed  
or food products.

Do not use in edible products areas of food  
processing plants, restaurants or other areas  
where food is commercially prepared or pro-  
cessed. Do not use in serving areas while  
food is exposed.

DESTROY EMPTY CONTAINERS. Do not  
reuse empty container. Wash thoroughly with  
water and detergent. Discard in a safe place.

### NOTICE

Use only for the purposes and in com-  
pliance with the limitations, cautions or warn-  
ings stated on this label.

UNICO Insect Spray is prepared for use  
atomized spray to kill insects upon contact  
mosquitoes, gnats, ants, bedbugs, midges, v

**FLIES, MOSQUITOES, GNATS, MIDGES**  
in room to be sprayed. Spray with hand or  
surfaces where these insects alight or crawl  
seconds of spraying. Remove pets and cover  
Repeat as necessary.

Do not remain in treated area. Ventil

**CLOTHES MOTHS:** Clean closet or other  
cracks in the floor, along baseboard, and a  
be protected. Spray woolen articles thorou  
along the seams and into folds or pleats  
from the fabric. The spray must be applic  
staining. Allow sprayed articles to dry  
applications every 30 days, unless articles are  
tight containers, previously cleaned and - r

Do not remain in treated areas. Ventil

**ANTS:** With hand sprayer capable of prod  
trails where ants are crawling, paying part  
where they enter the house. Repeat as nee

**BEDBUGS:** Spray mattress along seams  
before using. Do not spray general surface  
(treat box springs same as mattress) with  
into hiding places in walls and floor cover  
moulding, under loose wallpaper, and unde

Do not remain in treated areas. Ventil

## UNICO Insect Spray

### DIRECTIONS FOR USE

#### CAUTION

HARMFUL IF SWALLOWED, INHALED, OR ABSORBED THROUGH SKIN. Do not breathe vapor or spray mist. Avoid contact with skin or eyes. Wash thoroughly with soap and water after handling and before eating or smoking. Do not contaminate water, feed, or foodstuffs.

If swallowed, induce vomiting immediately and get medical attention. Atropine is antidotal. Do not use, spill, pour, or store near open flame. Do not store with or near feed or food products.

Do not use in edible products areas of food processing plants, restaurants or other areas where food is commercially prepared or processed. Do not use in serving areas while food is exposed.

DESTROY EMPTY CONTAINERS. Do not reuse empty container. Wash thoroughly with water and detergent. Discard in a safe place.

---

#### NOTICE

Use only for the purposes and in compliance with the limitations, cautions or warnings stated on this label.

UNICO Insect Spray is prepared for use particularly in the home. Apply as finely atomized spray to kill insects upon contact with the mist or vapors. Controls house flies, mosquitoes, gnats, ants, bedbugs, midges, window flies, and moths.

**FLIES, MOSQUITOES, GNATS, MIDGES, AND WINDOW FLIES:** Close all openings in room to be sprayed. Spray with hand or electric sprayer, directing upward and toward surfaces where these insects alight or crawl. An average size room will require 15 to 20 seconds of spraying. Remove pets and cover fish bowls and aquaria before spraying room. Repeat as necessary.

Do not remain in treated area. Ventilate the area after treatment is completed.

**CLOTHES MOTHS:** Clean closet or other area and spray thoroughly, particularly into cracks in the floor, along baseboard, and around mouldings. Clean and brush articles to be protected. Spray woolen articles thoroughly on upper and lower surfaces, especially along the seams and into folds or pleats, with nozzle of sprayer held at least 18 inches from the fabric. The spray must be applied carefully and evenly as a light mist to avoid staining. Allow sprayed articles to dry thoroughly before storing or using. Repeat applications every 30 days, unless articles are stored immediately after treatment in moth-tight containers, previously cleaned and sprayed as directed above.

Do not remain in treated areas. Ventilate the area after treatment is completed.

**ANTS:** With hand sprayer capable of producing driving spray, spray infested areas and trails where ants are crawling, paying particular attention to wet with spray all places where they enter the house. Repeat as necessary.

**BEDBUGS:** Spray mattress along seams and under tufts. Allow at least 4 hours to dry before using. Do not spray general surface of mattress. Spray bed frame and springs (treat box springs same as mattress) with particular attention to joints and cracks. Spray into hiding places in walls and floor of room, such as the space along baseboards and moulding, under loose wallpaper, and under picture frames. Repeat as necessary.

Do not remain in treated area. Ventilate the area after treatment is completed.