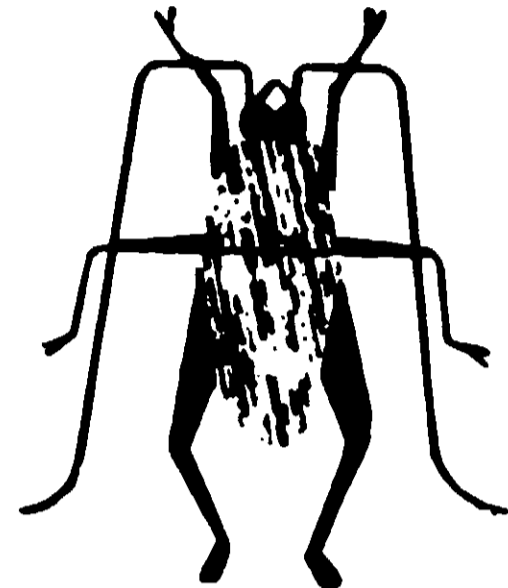
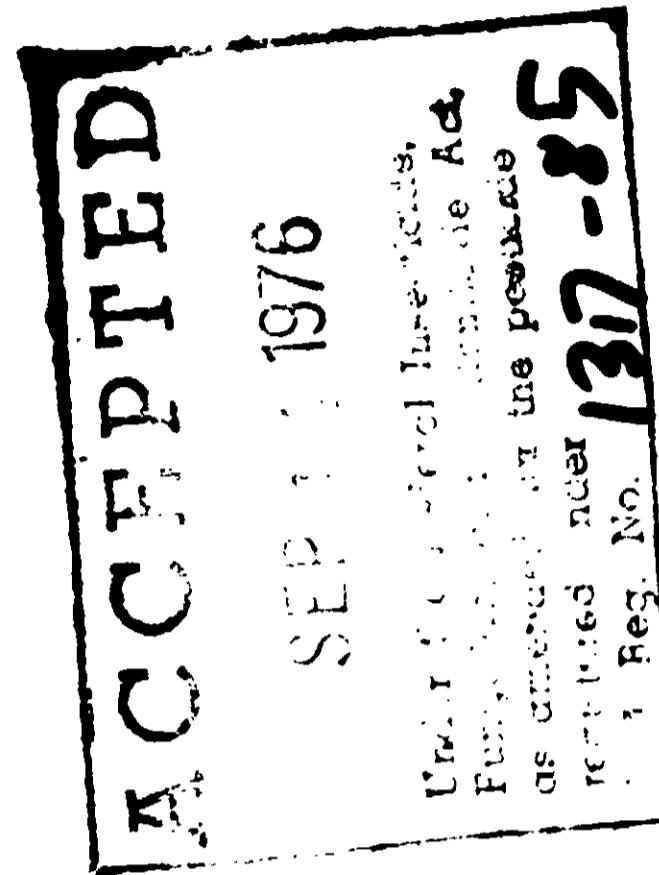


A GUARANTEED PRODUCT  
**ROACH  
 FOIL**



**kills  
 roaches**



**ANTS SILVERFISH BEDBUGS FLEAS SPIDERS**

<b>ACTIVE INGREDIENTS</b> . . . . .	<b>100%</b>
Pyrethrins . . . . .	1.00%
Technical Piperonyl Butoxide* . . . . .	10.00%
Amorphous Silica Gel . . . . .	40.00%
Petroleum Hydrocarbons . . . . .	49.00%

\* Equivalent to 8.00% of (butylcarbityl) (6-propylpiperonyl) ether and to 2.00% of related compounds.

**CAUTION: KEEP OUT OF REACH OF CHILDREN**  
 See other precautions on back panel

**AVOID INHALATION. DO NOT CONTAMINATE FOODSTUFFS OR FEED. DO NOT DUST INTO OPEN FLAME OR PILOT LIGHTS.**

**Net Weight 2 oz.**

Roach-Foil is a fortified sorptive dust which kills insects quickly on contact through a physical-chemical action. Being odorless and non-staining it may be used in homes, hospitals, restaurants, stores, school, jails, ships, hotels.

Do not use in edible-products areas of food processing plants, restaurants, or other areas where food is commercially prepared or processed. Do not use in serving areas while food is exposed.

Do not reuse container. Destroy when empty.

**DIRECTIONS FOR USE:**

If inhaled Roach-Foil may be irritating. **USE WITH CARE.** Use of a dust mask is recommended. To increase volume of duster cut a little off tip end.

**ROACHES, ANTS, SILVERFISH, SPIDERS:** Distribute Roach-Foil in a visible film at the rate of 1-oz. per 60 sq. ft. under and behind appliances, stoves, drawers, shelves, baseboards, sink cabinets, moldings and into cracks, crevices, holes, where insects hide. For severe infestations apply behind cabinets, walls, sub-floors, attics and other hiding places.

**FLEAS:** Dogs and Cats—rub Roach-Foil to the skin but protect eyes and nose. Dust kennels, beds and infested areas at the rate of 1-oz. per 60 sq. ft.

**BEDBUGS:** Dust infested area including bedstead, springs, mattress including seams.

**NOTE:** IN ALL CASES REPEAT TREATMENT AS NECESSARY. FOR LARGE AREAS HAND OR POWDER DUSTERS MAY BE USED. LARGER PACKAGES OF ROACH-FOIL ARE AVAILABLE. VACUUM CLEANER, WET CLOTH OR MOP WILL REMOVE EXCESS DUST FROM CONSPICIOUS PLACES.

PERSISTENTLY USED, ROACH-FOIL IS GUARANTEED TO CONTROL THESE PESTS

E.P.A. Est. 1317-CA-1  
 E.P.A. Reg. No. 1317-85

**AN-FO MANUFACTURING CO.**  
 Oakland, California 94601