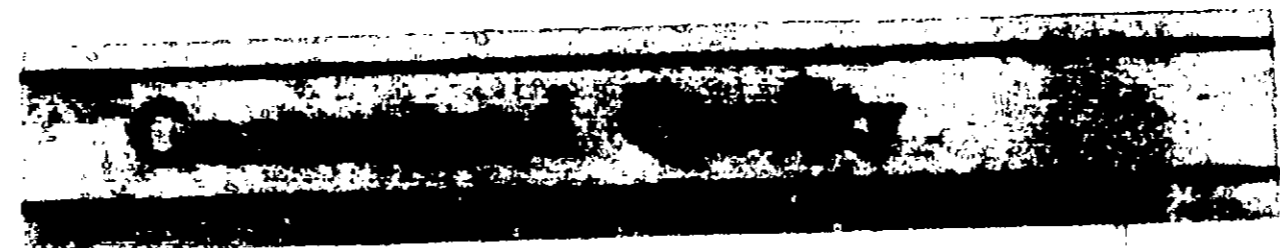


Center Panel

+



# MAGNA-TOX SUPER

#150

KILLS LIVESTOCK PESTS QUICKLY - PROTECTS  
AGAINST REINFESTATION - 1 GALLON  
MAKES 150 GALLONS OF SPRAY OR DIP

Effective against Horn Flies, Ticks, Fleecce Worms,  
Sarcoptic Mange, Sheep Scab

ACTIVE INGREDIENTS:

Toxaphene - Technical Chlorinated Camphene (Chlorine Content 67-69%)	45.00%
Gamma Isomer of Benzene Hexachloride <sup>(FROM LINDANE)</sup>	2.00%
<del>Gamma Isomer of Benzene Hexachloride</del>	<del>2.00%</del>
<del>Methylated Naphthalene</del>	<del>2.00%</del>
<del>PETROLEUM DISTILLATE</del>	<del>48.00%</del>
INERT INGREDIENTS:	5.00%

WARNING: Keep out of reach of children.  
See side panel for additional cautions.

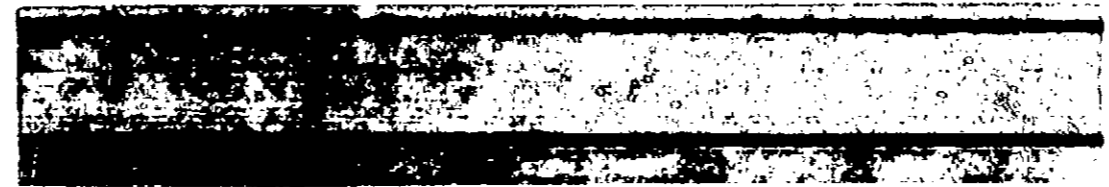
U.S.D.A. Reg. No. -----

MAGNOLIA CHEMICAL CO., INC.  
P. O. BOX 2017  
2646 RODNEY LANE  
DALLAS, TEXAS  
(214-771-7111)

ACCEPTED WITH COMMENTS

Left Panel

7



DIRECTIONS FOR USE

1. CATTLE-TICK, HORN FLIES AND LICE — DIP OR SPRAY  
Accurately mix MAGNA-TOX SUPER at the rate of 1 gallon to 150 gallons of water for complete kill of ticks, horn flies and lice present, and protection against reinfestation. Thorough wetting of the animals is essential for best results. Repeat applications as necessary.

SHEEP AND GOATS — LICE AND SHEEP TICKS — DIP OR SPRAY  
Mix MAGNA-TOX SUPER at the rate of 1 gallon to 500 gallons of water. Thorough wetting is essential for best results. A single application is usually sufficient for control of these pests.

FLEECE WORMS AND TICKS (KEDS) — DIP OR SPRAY  
Dilute MAGNA-TOX SUPER at the rate of 1 gallon to 150 gallons of water. Wet sheep thoroughly. Repeat as necessary.

SHEEP SCAB — DIP  
Accurately mix MAGNA-TOX SUPER at the rate of 1 gallon to 100 gallons of water for complete cure of scab in a single dipping. Immerse sheep not less than 1/2 minute, ducking heads at least twice. When large herds are dipped, the dip should be frequently checked by a vat-side test to assure proper dipping strength.

1706 LICE — DIP OR SPRAY  
Mix MAGNA-TOX SUPER at the rate of one gallon to 150 gallons of water. A single application is usually sufficient to control this pest.

2. SARCOPTIC MANGE — ON CATTLE, SHEEP, GOATS  
Mix MAGNA-TOX SUPER at the rate of 1 gallon to 150 gallons of water. Spray animals twice at a 14 day interval. Thorough wetting of animals is essential.

For Back Rubbers- In aid of horn flies and lice on beef cattle, dilute 1 pint of Magna Tox Super with 1 1/2 gallons of diesel fuel or light motor oil. Charge burlap bags by saturating with solution so that it is thoroughly wet, but do not wet to the point of dripping. Repeat charging as necessary. This application results in the rapid reduction of horn flies after exposure of animal, but regular exposure of 10 weeks is necessary for good results against lice.

For SMALL QUANTITIES —  
2 7/8 table-ponsof MAGNA-TOX SUPER makes 1/2 gallon of spray or dip.

## Right Panel

**MIXING MAGNA-TOX SUPER WITH WATER** <sup>REQUIRED</sup>  
Add MAGNA-TOX SUPER directly to ~~the~~ amount of water in accordance with directions recommended on the label. Stir or agitate the resulting mixture thoroughly before each ~~use~~ USE.

**REPLENISHING DIPPING VATS --**  
Add MAGNA-TOX SUPER in accordance with recommended dilution for all fresh water added to the vat, or control replenishment by vat-side test.

**WARNING: May be fatal if swallowed! Do not breath spray mist. May be absorbed through skin. Do not get in eyes, on skin, or on clothing. Use respirator or goggles for protection if necessary. In case of skin contact, wash immediately with soap and water. Avoid contamination of food and feed-stuffs. Concentrations of Magna Tox Super greater than those recommended should never be used. Do not use on household pets or humans. Do not use on dairy animals, in dairy barns, in milk rooms, or on feed to be fed to livestock. Do not dip calves under the age of 6 months. If treatment of young animals is necessary, spraying is recommended. Do not apply toxaphene to calves less than three months of age. Do not dip animals within 60 days of slaughter. Do not spray animals within 30 days of slaughter. Do not permit animals access to backrubbers within 30 days of slaughter. Do not treat animals under 3 months of age. Do not treat sows within two weeks of farrowing nor for at least three weeks thereafter. Avoid treating animals in cold, stormy weather. Avoid treating overheated or sick animals.**

To protect fish and wildlife, do not contaminate streams, lakes, or ponds with this material. Do not store near heat or open flames.

Do not reuse empty container. wash thoroughly with water and detergent. Discard in a safe place.

**ANTIDOTE -- EXTERNAL --** Wash with plenty of soap and water.

**HUMAN INTERNAL --** Give sodium chloride 15 grains and tablespoonful of salt in a glass of warm water. Repeat until vomit is clear. Call a doctor immediately.

**NET CONTENTS** 1 Gallon