

Pm 17.

1 of 2

1270-152

ACCEPTED
JUL 19 1971
UNDER THE FEDERAL INSECTICIDE
FUNGICIDE AND RODENTICIDE ACT
FOR ECONOMIC POISON REGISTER-
ED UNDER NO. 1270-152 SUBJECT
TO ATTACHED COMMENTS.

0 2
0 2
0 2
0 2
0 2

CAUTION

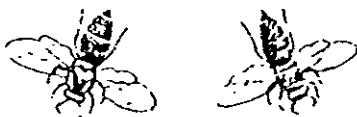
Avoid contamination of feed and foodstuffs. Cover or remove fish-bowls. Contents under pressure. Do not puncture. Do not expose container to temperatures above 120°F. Never throw container into fire or incinerator. Harmful if swallowed.

NON-FLAMMABLE

U.S.D.A. Reg. No. 1270-152



PRESSURIZED SPRAY INSECTICIDE



A New Synthetic Pyrethroid for Controlling the Following Household Flying and Crawling Insects: Houseflies, Mosquitoes, Gnats, Wasps, Roaches, Ants, Earwigs, Spiders, Grain Mites, Sowbugs and Centipedes.

ACTIVE INGREDIENTS:

2-(5-Benzyl-3-furyl)methyl, 2,2-dimethyl-3-[2-methylpropenyl]cyclopropane-carboxylate	0.250% w/w
Related compounds	0.034%
Aromatic petroleum hydrocarbons	0.332%
INERT INGREDIENTS:	99.384%
	100.000%

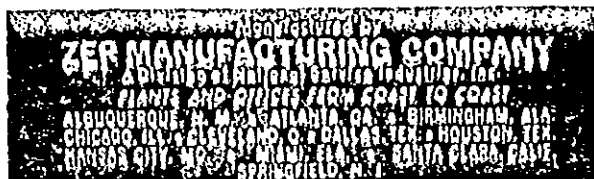
* Cis/trans isomers ratio: max. 30% (±) cis and min. 70% (±) trans. †U.S. Patent No. 3,465,007.

NET WT. 1 lb. 2 oz. Av. (18 oz. Av.)

CAUTION:

KEEP OUT OF REACH OF CHILDREN

Contents under pressure. See side panel for additional precautionary statements.



DIRECTIONS FOR USE:

Shake well before each use. Remove protective cap. Aim spray opening away from person. Push button to spray.

FOR HOUSEFLIES, MOSQUITOES, AND GNATS: Close all doors and windows. Point nozzle upward, direct the spray mist to all parts of the room, especially windows and other light sources which attract these insects. Fill the room with mist, then leave the treated area. Keep the room closed for at least 15 minutes. Ventilate the room when treatment is completed.

WASPS: Application should be made in late evening when insects are at rest. Spray liberally into hiding and breeding places, contacting as many insects as possible. Repeat as necessary.

FOR CRAWLING INSECTS: Roaches, earwigs, grain mites, sowbugs, spiders and centipedes: Spray thoroughly into hiding places such as cracks, crevices, moist areas, openings around pipes and sinks, under refrigerators, baseboards, and storage areas. Spray directly on insects where possible. Repeat as necessary.

ANTS: Spray trails, nests and points of entry. Spray on ants where possible. Repeat as necessary.



BEST AVAILABLE COPY