

# MoorMan's®

# Hi-Mag IGR Minerals®

To prevent the breeding of horn flies in the manure of treated cattle only.  
A pesticidally active mineral feed for beef and dairy cattle containing methoprene\* insect growth regulator for continuous feeding during the fly season.

**ACTIVE INGREDIENT:** methoprene [Isopropyl (E,E)-11-methoxy-3,7,11-trimethyl-2,4-dodecadienoate]\* ..... 0.02%

**OTHER INGREDIENTS:** ..... 99.98%

**TOTAL**..... 100.00%

### GUARANTEED ANALYSIS

Calcium (Ca), not less than.....	9.2%
Calcium (Ca), not more than.....	11.0%
Phosphorus (P), not less than.....	6.0%
Salt (NaCl), not less than .....	13.4%
Salt (NaCl), not more than .....	16.0%
Magnesium (Mg), not less than .....	14.0%
Potassium (K), not less than.....	0.2%
Copper (Cu), not less than .....	1100 ppm
Selenium (Se), not less than .....	39 ppm
Zinc (Zn), not less than .....	3800 ppm
Vitamin A, not less than 200,000 International Units per pound.	

### FEED INGREDIENTS

Magnesium Oxide, Monocalcium Phosphate, Dicalcium Phosphate, Salt, Defluorinated Phosphate, Soybean Meal, Calcium Carbonate, Petrolatum, Cane Molasses, Magnesium-Mica, Manganous Oxide, Calcium Sulfate, Iron Oxide, Brewer's Condensed Solubles, Zinc Oxide, Potassium Sulfate, Copper Sulfate, Dried Corn Syrup, Ferrous Sulfate, Vitamin A Acetate, Ethylenediamine Dihydriodide, Potassium Iodide, Sodium Selenite. Cobalt Carbonate, Mineral Oil, D-Activated Animal Sterol (Source of Vitamin D<sub>3</sub>),

\*As the insect growth regulator ALTOSID® CP-10, a registered trademark of Wellmark International.

Use this product only as specified on the back of the bag.

Keep out of reach of children.

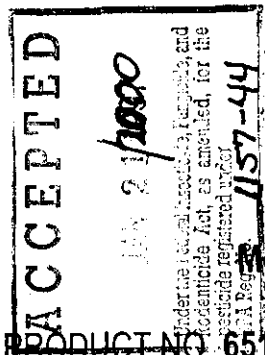
## CAUTION

NET WT 50 LB (22.67 kg)

MoorMan's, Inc., General Office, Quincy, Illinois 62305-3115

EPA REG. NO. 1157-44

EPA Est. 1157-IL-1



PRODUCT NO. 651

2/2

# MoorMan's Hi-Mag IGR Minerals

## DIRECTIONS FOR USE

It is a violation of Federal law to use this product in a manner inconsistent with its labeling.

This product only prevents emergence of adult horn flies from the manure of treated cattle. Begin use in the spring before horn flies appear on cattle and continue feeding until cold weather restricts horn fly activity. Introduction of the product when significant numbers of adult horn flies are present may require the use of adulticide sprays or dusts.

### Free-Choice Feeding (self-feeding)

Make sure cattle are not starved for minerals or salt by providing them before feeding MoorMan's Hi-Mag IGR Minerals. Then remove salt or mineral supplement and start continuous feeding of MoorMan's Hi-Mag IGR Minerals.

The recommended consumption of MoorMan's Hi-Mag IGR Minerals is 0.25 lb (1/4 lb) to 0.5 lb (1/2 lb) per 100 lb of body weight per month. Place MoorMan's Hi-Mag IGR Minerals near watering or loafing areas and provide one feeder for each 15 to 20 head. Put out only a 5-7 day supply of MoorMan's Hi-Mag IGR Minerals at one time and protect it from rain.

If consumption of MoorMan's Hi-Mag IGR Minerals is above 0.5 lb (1/2 lb) per 100 lb of body weight per month, reduce the number of feeding stations or relocate feeders in areas frequented less by cattle.

If consumption of MoorMan's Hi-Mag IGR Minerals is below 0.25 lb (1/4 lb) per 100 lb of body weight per month, increase the number of feeding stations or relocate feeders in areas more frequented by cattle.

### Mixed Ration Feeding (hand-feeding)

When cattle are on supplemental feeds or if mineral consumption is not as recommended, mix MoorMan's Hi-Mag IGR Minerals with other non-medicated feeds and feed daily to provide 0.25 lb (1/4 lb) to 0.5 lb (1/2 lb) of MoorMan's Hi-Mag IGR Minerals per 100 lb of body weight per month.

## STORAGE AND DISPOSAL

Do not contaminate water or food by storage or disposal.

**STORAGE:** Store in a dry area. Do not contaminate with pesticides or fertilizer.

**PESTICIDE DISPOSAL:** Wastes resulting from the use of this product may be disposed of on site or at an approved waste disposal facility.

**CONTAINER DISPOSAL:** Completely empty bag into application equipment. Then dispose of empty bag in a sanitary landfill or by incineration, or, if allowed by State and local authorities, by burning. If burned, stay out of smoke.

PRODUCT NO. 651

11  
C. No. 651CWC