

DIRECTIONS FOR USE

Initial Dose: 1 Gallon Swimicide to 50,000 Gallons of Water. Maintenance Dose: 1 quart Swimicide to 50,000 Gallons of Water.

Initial dose is used when filling pool at beginning of swimming season. If pool has visible algae growth, treat with initial dose. Vacuum pool after 24 hours to remove algae debris. If visible algae are still present or reappear, repeat this treatment procedure as necessary. When Pool is free of visible algae, use the recommended maintenance dose.

Maintenance dose should be added at 3-5 day intervals. If high temperatures prevail or pool has unusually heavy use, add maintenance dose more frequently.

If make up water is added at the rate of more than 10% per week of pool capacity, add 1 quart of Swimicide for each 10,000 Gallons of fresh make up water added per week.

When swimming season is over, add 1 Gallon of Swimicide to 50,000 gallons of water in treating water left in pool. This dose helps provide a measure of control of algae growth during the winter months. This treatment will also help the servicing of the pool before it is returned to use the following season.

NET CONTENTS
SO-PRO-CO
SWIMICIDE

CONCENTRATED SWIMMING POOL ALGAECIDE
Keeps pool water clear and free of visible algae.
Controls Algae Slimes.

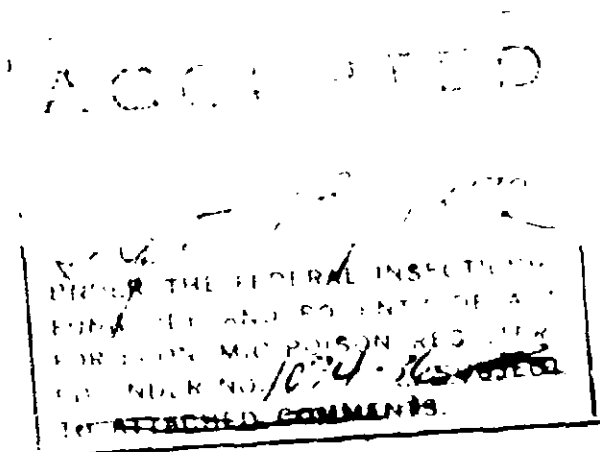
Active Ingredients:

n-Alkyl (60%C ₁₄ , 30%C ₁₆ , 5%C ₁₂ , 5%C ₁₈)	
Dimethyl Benzyl Ammonium Chloride.....	5.0%
N Alkyl (68%C ₁₂ , 32%C ₁₄) Dimethyl ethylbenzyl Ammonium Chloride.....	5.0%
Inert Ingredients	90.0%
	<hr/> 100.0%
NET WEIGHT: _____	

DANGER
 KEEP OUT OF REACH OF CHILDREN.
 SEE OTHER WARNINGS ON SIDE PANEL.

EPA REG. NO. 1074-36

SOUTHERN PRODUCTS COMPANY
 1301 Heistan Pl. 1101 So. 6th St.
 Memphis, Tenn. Nashville, Tenn.



When Swimicide is used as directed, it will prevent development of chloridis pyrenoidosa (green), Phormidium inudetum (black algae), Lyngbaversicolor (blue), and other swimming pool algae.

Swimicide is compatible with most commonly used swimming pool chemicals, but should not be mixed with soap or other cleaners, or premixed with other water treating chemicals. Swimicide works best when added by itself directly to pool water. Swimicide at use dilution is non-corrosive to inanimate surfaces.

DANGER

Keep out of reach of children. Causes severe eye and skin damage. Do not get in eyes, on skin or on clothing. Wear goggles or face shield, and rubber gloves when handling. Harmful or fatal if swallowed. Avoid contamination of food.

Probable mucosal damage may contraindicate the use of gastric lavage. Measures against circulatory shock, respiratory depression and convulsion may be needed.

This product is toxic to fish. Treated effluent should not be discharged where it will drain into lakes, streams, ponds or public water.

FIRST AID

In case of contact, immediately flush eyes or skin with plenty of water for at least 15 minutes. For eyes, call a physician. Remove and wash all contaminated clothing before re-use. If swallowed, drink milk, egg whites, gelatin solution, or if these are not available, drink large quantities of water. Call a physician. Rinse and discard container.