

1072-5

9/13/2010

1/5



UNITED STATES ENVIRONMENTAL PROTECTION AGENCY
WASHINGTON, DC 20460

SEP 13 2010

OFFICE OF CHEMICAL SAFETY
AND POLLUTION PREVENTION

Kim Davis
Consultant/Agent for GEA Farm Technologies, Inc.
RegWest Company, LLC
8203 West 20th Street
Suite A
Greeley, CO 80634

FILE COPY

Subject: Zinicin
EPA Reg. No. 1072-5
Application Dated: July 9, 2010
Receipt Date: July 12, 2010

Dear Ms. Davis:

The following amendment, submitted in connection with registration under the Federal Insecticide, Fungicide, and Rodenticide Act (FIFRA), as amended, is acceptable.

Proposed Amendment:

- Label amendment to consolidate previous notification revisions

General Comments

A stamped copy of the accepted labeling is enclosed. Submit 1 copy of your final printed label before distributing or selling the product bearing the revised labeling.

Should you have any questions or comments concerning this letter, please contact me at Henson.Wanda@epa.gov or call (703) 308-6345.

Sincerely,

A handwritten signature in black ink that reads "Wanda Henson".

Wanda Henson
Acting Product Manager (32)
Regulatory Management Branch II
Antimicrobials Division (7510P)

ZINICIN™

Chlorinated Sanitizer



GEA Farm Technologies

ACCEPTED
SEP 13 2010
Under the Federal Insecticide, Fungicide, and
Rodenticide Act as amended, for the
pesticide, registered under
EPA Reg. No. 1072-5

[Distributed by:]
GEA Farm Technologies, Inc.

1880 Country Farm Drive
Naperville, IL 60563 U.S.A.

ONLY FOR FARM, COMMERCIAL & INDUSTRIAL USE.
ZINICIN is a Trademark of GEA Farm Technologies, Inc. Made in U.S.A.

Active Ingredient:

Sodium Hypochlorite	12.5%
Other Ingredients	87.5%
Total	100.0%

EPA Reg. No. 1072-5
EPA Est. _____

KEEP OUT OF REACH OF CHILDREN
DANGER

[See side panel for First Aid and additional Precautionary Statements]

First Aid

If in Eyes:	<ul style="list-style-type: none"> Hold eye open and rinse slowly and gently with water for 15-20 minutes. Remove contact lenses, if present, after the first 5 minutes, then continue rinsing eye. Call a poison control center or doctor for treatment advice.
If on Skin or Clothing:	<ul style="list-style-type: none"> Take off contaminated clothing. Immediately rinse skin with plenty of water for 15-20 minutes. Call a poison control center or doctor for treatment advice.
If Swallowed:	<ul style="list-style-type: none"> Immediately call a poison control center or doctor for treatment advice. Immediately drink large quantities of milk if available; otherwise drink large quantities of water. Do not induce vomiting unless told to do so by the poison control center or doctor. Do not give anything by mouth to an unconscious person.

Have the product container or label with you when calling a poison control center or doctor, or going for treatment. You may also contact 1-877-741-1032 for emergency medical treatment information.

Note to Physician: Probable mucosal damage may contraindicate the use of gastric lavage.

(Note: The first aid statements' grid format will be used if market label space permits; otherwise a paragraph format will be used.)

PRECAUTIONARY STATEMENTS

Hazards to Humans and Domestic Animals

DANGER: Corrosive, may cause severe skin and eye irritation or chemical burns to broken skin. Causes eye damage. Wear safety glasses or goggles and rubber gloves when handling this product. Wash after handling. Avoid breathing vapors. Vacate poorly ventilated areas as soon as possible. Do not return until odors have dissipated.

Physical or Chemical Hazards

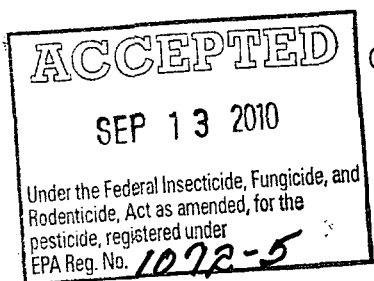
Strong oxidizing agent. Mix only with water according to label directions. Mixing this product with chemicals (e.g. ammonia, acids, detergents, etc.) or organic matter (e.g. urine, feces, etc.) will release chlorine gas which is irritating to eyes, lungs and mucous membranes.

Environmental Hazards

This pesticide is toxic to fish and aquatic organisms. Do not discharge effluent containing this product into lakes, streams, ponds, estuaries, oceans or other waters unless in accordance with the requirements of a National Pollutant Discharge Elimination System (NPDES) permit and the permitting authority has been notified in writing prior to discharge. Do not discharge effluent containing this product to sewer systems without previously notifying the local sewage treatment plant authority. For guidance contact your State Water Board or Regional Office of the EPA.

State and Local Regulations

Consult your dealer, state or local health authorities for additional information.



[TABLE OF PROPORTIONS – AVAILABLE CHLORINE

- 100 ppm – 1 fluid oz. (30 ml) in 10 gallons (38 liters) water
- 200 ppm – 2 fluid oz. (60 ml) in 10 gallons (38 liters) water
- 600 ppm – 6 fluid oz. (180 ml) in 10 gallons (38 liters) water]

DIRECTIONS FOR USE

It is a violation of Federal law to use this product in a manner inconsistent with its labeling.

Degrades with age. Use a test kit and increase dosage as necessary to obtain the required level of available chlorine.

Sanitization of Nonporous Food Contact Surfaces: Rinse/Immersion Method: Use a solution of 100 ppm available chlorine in the sanitizing solution if a chlorine test kit is available. Solutions containing an initial concentration of 100 ppm available chlorine must be tested and adjusted periodically to ensure that the available chlorine does not drop below 50 ppm. Prepare a 100 ppm sanitizing solution by thoroughly mixing 1 oz. of this product with 10 gallons of water. If no test kit is available, prepare a sanitizing solution by thoroughly mixing 2 oz. of this product with 10 gallons of water to provide approximately 200 ppm available chlorine by weight.

Clean equipment surfaces in the normal manner. Prior to use, thoroughly rinse or immerse all surfaces with the sanitizing solution, maintaining contact with the sanitizer for at least 2 minutes and allow the sanitizer to drain. If solution contains less than 50 ppm available chlorine, as determined by a suitable test kit, either discard the solution or add sufficient product to reestablish a 200 ppm residual. Do not rinse equipment with water after treatment and do not soak equipment overnight. Sanitizers used in automated systems may be used for general cleaning but may not be reused for sanitizing purposes.

Sanitization of Porous Food Contact Surfaces: Rinse Method: Prepare a 600 ppm solution by thoroughly mixing 6 oz. of this product with 10 gallons of water. Clean all surfaces in the normal manner. Thoroughly rinse/immerse all surfaces with the 600 ppm solution, maintaining contact for at least 2 minutes. Prior to using equipment, rinse/immerse all surfaces with a 200 ppm available chlorine solution. Do not rinse with water after treatment and do not soak equipment overnight.

Agricultural Uses: Food Egg Sanitization: Thoroughly clean all eggs. Thoroughly mix 2 oz. of this product with 10 gallons of water to produce a 200 ppm available chlorine solution. Do not allow the sanitizer temperature to exceed 130°F. Spray the warm sanitizer so that the eggs are thoroughly wetted. Allow the eggs to thoroughly dry before casing or breaking. Do not apply a potable water rinse. Do not reuse the solution to sanitize eggs.

4/5

{For product in refillable containers}

Storage and Disposal

Do not contaminate water, food or feed by storage or disposal.

Storage: Store in a cool, dry area, away from direct sunlight and heat to avoid deterioration. Keep from freezing. If frozen, separation may occur. Completely thaw and mix well prior to use. In case of spill, flood area with large quantities of water. **Pesticide Disposal:** Pesticide wastes are acutely hazardous. Improper disposal of excess pesticide, spray mixture or rinsate is a violation of Federal law. If these wastes cannot be disposed of by use according to label instructions, contact your state pesticide or environmental control agency or the hazardous waste representative at the nearest EPA Regional Office for guidance. **Container Disposal:** Refillable container. Refill this container only with Sodium Hypochlorite. Do not reuse this container for any other purpose. Cleaning the container before final disposal is the responsibility of the person disposing of the container. Cleaning before refilling is the responsibility of the refiller. To clean the container before final disposal, empty the remaining contents from this container into application equipment or mix tank. Fill the container about 10 percent full with water. Agitate vigorously or recirculate water with the pump for 2 minutes. Pour or pump rinsate into application equipment or rinsate collection system. Repeat this rinsing procedure two more times.

{For products in rigid, non-refillable containers 5 gallons or less}

Storage and Disposal

Do not contaminate water, food or feed by storage or disposal

Storage: Store in a cool, dry area, away from direct sunlight and heat to avoid deterioration. Keep from freezing. If frozen, separation may occur. Completely thaw and mix well prior to use. In case of spill, flood area with large quantities of water. **Pesticide Disposal:** Pesticide wastes are acutely hazardous. Improper disposal of excess pesticide, spray mixture or rinsate is a violation of Federal law. If these wastes cannot be disposed of by use according to label instructions, contact your state pesticide or environmental control agency or the hazardous waste representative at the nearest EPA Regional Office for guidance. **Container Disposal:** Non-refillable container; do not reuse or refill this container. Offer for recycling, if available. Promptly clean container after emptying. Triple rinse as follows: Empty the remaining contents into application equipment or a mix tank and drain for 10 seconds after the flow begins to drip. Fill the container ¼ full with water and recap. Shake for 10 seconds. Pour rinsate into application equipment or a mix tank or store rinsate for later use or disposal. Drain for 10 seconds after the flow begins to drip. Repeat this procedure two more times.

{For product in rigid, non-refillable containers greater than 5 gallons}

Storage and Disposal

Do not contaminate water, food or feed by storage or disposal

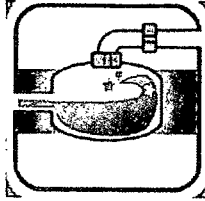
Storage: Store in a cool, dry area, away from direct sunlight and heat to avoid deterioration. Keep from freezing. If frozen, separation may occur. Completely thaw and mix well prior to use. In case of spill, flood area with large quantities of water. **Pesticide Disposal:** Pesticide wastes are acutely hazardous. Improper disposal of excess pesticide, spray mixture or rinsate is a violation of Federal law. If these wastes cannot be disposed of by use according to label instructions, contact your state pesticide or environmental control agency or the hazardous waste representative at the nearest EPA Regional Office for guidance. **Container Disposal:** Non-refillable container; do not reuse or refill this container. Triple rinse (or equivalent) container promptly after emptying. Triple rinse as follows: Empty the remaining contents into application equipment or a mix tank. Fill the container ¼ full with water. Replace and tighten closures. Tip container on its side and roll it back and forth, ensuring at least one complete revolution, for 30 seconds. Stand the container on its end and tip it back and forth several times. Turn the container over onto its other end and tip it back and forth several times. Empty the rinsate into application equipment or a mix tank or store rinsate for later use or disposal. Repeat this procedure two more times. Then offer for recycling, if available; or reconditioning, if appropriate; or puncture and dispose of in a sanitary landfill.

ACCEPTED
SEP 13 2010
Under the Federal Insecticide, Fungicide, and Rodenticide, Act as amended, for the pesticide, registered under EPA Reg. No. 1072-5

5/5

Net Contents: __ U.S. Gallons [(__ L)]
{Date Code}

{Product in non-refillable containers will bear a lot number/batch code per PR Notice 2007-4}



- [] Denotes alternate/optional language
- { } Denotes language not appearing on market label

ACCEPTED
 SEP 13 2010

Under the Federal Insecticide, Fungicide, and
 Rodenticide Act as amended, for the
 pesticide, registered under
 EPA Reg. No. 1072-5