

CAUTION**KEEP OUT OF REACH OF CHILDREN**

May be harmful if swallowed, inhaled or absorbed through the skin. Avoid breathing spray mist. Avoid contact with skin, eyes or clothing. After handling, wash thoroughly with soap and warm water. Avoid contamination of food, beverages, utensils and food preparation areas. Avoid contamination of fish ponds. Remove pets from area before spraying.

If poisoning occurs, get prompt medical aid.

To physician: atropine sulfate is antidotal.

FLAMMABLE. Do not spray near open flame. Do not smoke while spraying.

Avoid excess wetting of plastic, rubber and asphalt.

Before using on easily stained surfaces, test on a small area.

Spray may harm flowers and ornamentals.

CONTENTS UNDER PRESSURE. Keep container away from stoves, radiators and other hot surfaces. Temperature over 120° may cause container to burst. Do not puncture or incinerate.

ACTIVE INGREDIENTS

	By Weight
Pyrethrins	0.10%
Piperonyl butoxide, technical*	0.20%
†N-Octyl bicycloheptene dicarboximide	0.33%
o-Isopropoxyphenyl methylcarbamate**	0.50%
petroleum distillate	51.87%
INERT INGREDIENTS	47.00%
TOTAL	100.00%

*Consists of 0.16% (butylcarbityl) (6-propyl piperonyl) ether and .04% other related compounds.

**Baygon ® U.S. Pat. No. 3,111,539.

†MGK 264. Insecticide Synergist.

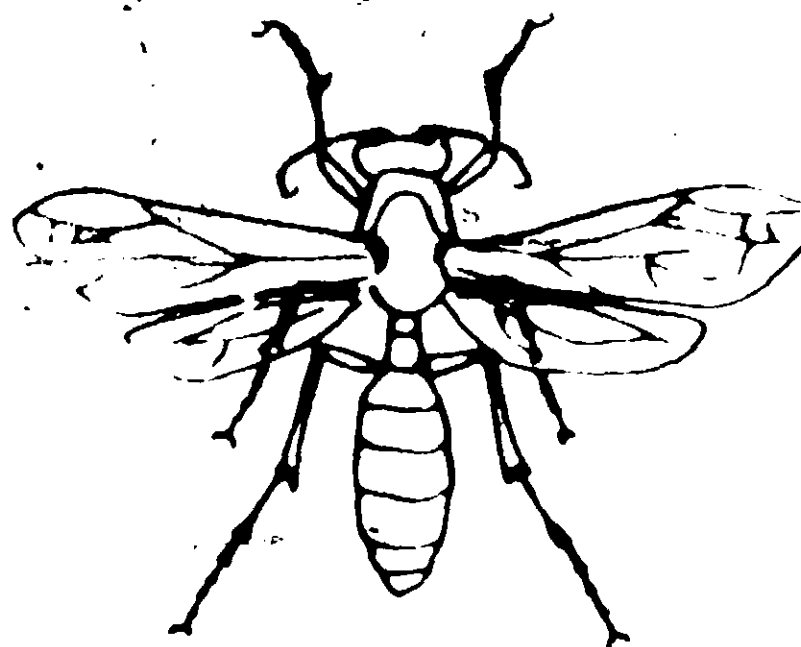
WAZ

KILLS WASPS, HORNETS

USE OUTDOORS ONLY

1-17-72

1057-55



**Shoots a Concentrated Spray Cone
to Give Quick Knockdown and Kill.**

CAUTION

KEEP OUT OF REACH OF CHILDREN

FLAMMABLE — CONTENTS UNDER PRESSURE

Read Precautions on Side Panels

NET WEIGHT: 11.5 OZ.

While many wasps and related insects are beneficial, they become dangerous when they build nests close to windows, doorways or children's play areas.

DIRECTIONS

Use WAZ outdoors only for spot application in areas indicated below.

To control wasps and hornets, apply after sun has set and insects have returned to nests. Aim valve opening at nest and press button, soaking nest with spray. Spray under porches, eaves and around window and door frames. Repeat as necessary. Keep spray off vegetation. Do not use as space spray.

Other Uses. To control chigger mites, crickets, earwigs, millipedes, sowbugs and brown dog ticks, thoroughly spray infested areas, including outside surfaces of screen frames, window frames, doors, foundations, patios and other places which may harbor insects or provide portals of entry.

To control ants spray hills and runways. Repeat as necessary.

To control spiders spray directly on them and their webs. Also spray tracking areas about porches, under eaves and along foundations. Repeat as necessary.

NOTICE: Buyer assumes all responsibility for safety and for use not in accordance with directions.

E.P.A. Reg. No. 1857-55

Dependable
DOLGE

The C.B. DOLGE Co., WESTPORT, CONN.