

WEED-FREE[®] S P

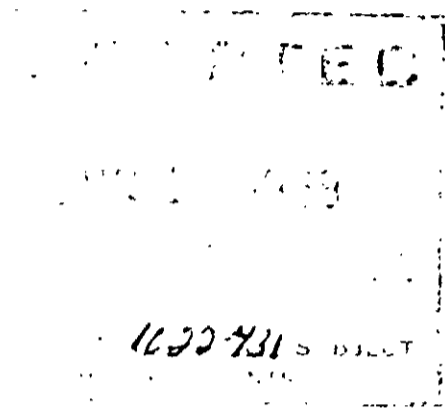
NET CONTENTS ___ LBS.

FOR NON-SELECTIVE OR INDUSTRIAL WEED CONTROL

READ THIS LABEL BEFORE USING PRODUCT

INGREDIENT STATEMENT

Simazine	ACTIVE (2-chloro-4,6-bis-(ethylamino)-s-triazine)	4.00%
	INERT	96.00%
		100.00%



GENERAL INFORMATION

WEED-FREE S4P controls both broadleaf weeds and grasses. It is most effective as a pre-emergence herbicide and should be applied just prior to, or during, weed emergence.

WEED-FREE S4P acts through the roots and its effect on weeds is therefore dependent upon rainfall to move the chemical into the root zone. Excessively dry soil conditions and absence of rain may result in poor weed control.

WEED-FREE S4P can be used at the recommended industrial rates wherever long-term, broad-spectrum weed control is desired on non-crop land. Some examples are petroleum tank farms, railway yards, rights-of-way, transfer stations, outdoor storage areas, lumber yards, above-ground pipelines, fire lanes, ditch banks, fence lines, outdoor theaters, camp sites and picnic areas, road sides, and cemeteries.

DIRECTIONS FOR USE

WEED-FREE S4P should be distributed uniformly over the soil surface by means of a cyclone spreader or other suitable mechanical application. For treatment of small areas, application by hand may be adequate.

NON-SELECTIVE OR INDUSTRIAL WEED CONTROL

Use 250 lbs. of WEED-FREE S4P per acre prior to, or during, weed emergence for control of species such as barnyard grass, witch grass, yellow foxtail, wild oats, crabgrass, quackgrass, broadleaf plantain, lambsquarters, pigweed, ragweed, nightshade, purslane, velvet leaf and mustard. For longer residual action and for control of more resistant perennials such as bull nettle, use 375 lbs. per acre. For best results, application should be made during the fall, winter or early spring. For spot treatments, use 6-9 lbs. of WEED-FREE S4P per 1,000 sq. ft.

NON-WARRANTY

Neither the Manufacturer nor the seller makes any representation or warranty, expressed or implied concerning this product, except that it is of the Manufacturer's standard quality. Neither shall be held responsible in any manner for any personal injury, property damage or other type of loss resulting from the improper handling, storage and use of this product. The buyer accepts and uses this product on these conditions.

KEEP OUT OF REACH OF CHILDREN!

Harmful if swallowed. Avoid contact with skin. Avoid storage near feed and food products. KEEP AWAY FROM CHILDREN AND DOMESTIC ANIMALS.

Do not apply to areas underlaid by roots of desirable trees and shrubs. Do not contaminate water used for irrigation or domestic purposes.

USDA Reg. No.

Chapman's Note
Poor Copy