



UNITED STATES ENVIRONMENTAL PROTECTION AGENCY  
WASHINGTON, DC 20460

OFFICE OF CHEMICAL SAFETY  
AND POLLUTION PREVENTION

August 30, 2018

Mr. Thomas A. Lennan  
Regulatory Affairs Specialist  
McLaughlin Gormley King Company  
8810 10<sup>th</sup> Avenue North  
Minneapolis, MN 55427

Subject: Label Amendment – Addition of Graphics, Optional Marketing Statements, and Unit Conversion Calculation for Users  
Product Name: Sumilarv® 0.5  
EPA Registration Number: 1021-2819  
Application Date: May 4, 2018  
Decision Number: 543072, 543496 & 543741

Dear Mr. Lennan:

The amended label referred to above, submitted in connection with registration under the Federal Insecticide, Fungicide and Rodenticide Act, as amended, is acceptable. This approval does not affect any conditions that were previously imposed on this registration. You continue to be subject to existing conditions on your registration and any deadlines connected with them.

A stamped copy of your labeling is enclosed for your records. This labeling supersedes all previously accepted labeling. You must submit one copy of the final printed labeling before you release the product for shipment with the new labeling. In accordance with 40 CFR 152.130(c), you may distribute or sell this product under the previously approved labeling for 18 months from the date of this letter. After 18 months, you may only distribute or sell this product if it bears this new revised labeling or subsequently approved labeling. "To distribute or sell" is defined under FIFRA section 2(gg) and its implementing regulation at 40 CFR 152.3.

Should you wish to add/retain a reference to the company's website on your label, then please be aware that the website becomes labeling under the Federal Insecticide Fungicide and Rodenticide Act and is subject to review by the Agency. If the website is false or misleading, the product would be misbranded and unlawful to sell or distribute under FIFRA section 12(a)(1)(E). 40 CFR 156.10(a)(5) list examples of statements EPA may consider false or misleading. In addition, regardless of whether a website is referenced on your product's label, claims made on the website may not substantially differ from those claims approved through the registration process. Therefore, should the Agency find or if it is brought to our attention that a website contains false or misleading statements or claims substantially differing from the EPA approved registration, the website will be referred to the EPA's Office of Enforcement and Compliance.

Page 2 of 2  
EPA Reg. No. 1021-2819  
Decision No. 543072, 543496 & 543741

Your release for shipment of the product constitutes acceptance of these conditions. If these conditions are not complied with, the registration will be subject to cancellation in accordance with FIFRA section 6. If you have any questions, please contact Mr. Carmen J. Rodia, Jr. by phone at (703) 306-0327, or via email at [Rodia.Carmen@epa.gov](mailto:Rodia.Carmen@epa.gov).

Sincerely,



Richard Gebken  
Product Manager 10  
Invertebrate & Vertebrate Branch 2  
Registration Division (7505P)  
Office of Pesticide Programs

*Enclosure: Stamped "Accepted" Master Label, dated August 30, 2018*

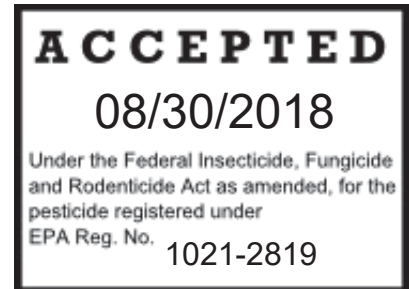
PYRIPROXYFEN	GROUP	<b>7C</b>	INSECTICIDE
--------------	-------	-----------	-------------

Controlled release insect growth regulator formulation to break mosquito life-cycle and prevent their emergence

- Prevents adult mosquito emergence (*including those which may transmit West Nile Virus*)
- Prevents mosquitos from becoming breeding, biting adults
- Easy to apply sand granule

ACTIVE INGREDIENTS:

[1-Methyl-2-(4-phenoxyphenoxy) ethoxy] pyridine.....	0.50%
OTHER INGREDIENTS .....	99.50%
	100.00%



KEEP OUT OF REACH OF CHILDREN  
**CAUTION**

FIRST AID	
IF IN EYES:	<ul style="list-style-type: none"> <li>▪ Hold eye open and rinse slowly and gently with water for 15-20 minutes.</li> <li>▪ Remove contact lenses, if present, after the first 5 minutes, then continue rinsing.</li> <li>▪ Call a poison control center or doctor for treatment advice.</li> </ul>
Have the product container or label with you when calling a poison control center or doctor, or going for treatment. For information regarding medical emergencies or pesticide incidents, call 1-888-740-8712.	

PRECAUTIONARY STATEMENTS HAZARDS TO HUMANS AND DOMESTIC ANIMALS
<p><b>CAUTION:</b> Causes moderate eye irritation. Avoid contact with eyes. Wash hands thoroughly with soap and water after handling and before eating, drinking, chewing gum, or using tobacco.</p> <p><b><u>ENVIRONMENTAL HAZARDS</u></b></p> <p>This pesticide is toxic to fish and aquatic invertebrates. Do not apply directly to treated, finished drinking water reservoirs or drinking water receptacles when the water is intended for human consumption. <b>This product must only be applied to catch basins and listed sites, which do not drain into natural water bodies.</b> Do not apply to areas where surface water is present, or to intertidal areas below the mean high water mark. Do not contaminate water when disposing of equipment wash water or rinsate.</p>

Manufactured by:  
  
 8810 Tenth Avenue North  
 Minneapolis, MN 55427

EPA Reg. No. 1021-2819

EPA Est. No. 1021-MN-2

Net Weight: \_\_\_\_\_

#### DIRECTIONS FOR USE

It is a violation of Federal law to use this product in a manner inconsistent with its labeling.

#### READ ALL DIRECTIONS COMPLETELY BEFORE USE

Before making the first application of the season, it is advisable to consult with the state or tribal agency with primary responsibility for pesticide regulation to determine if other regulatory requirements exist.

Do not apply more than 0.1 lbs pyriproxyfen per acre per year or (20 lbs. of Sumilarv 0.5g/acre/year).

Do not apply or allow drift onto pastureland, cropland, or potable water supplies.

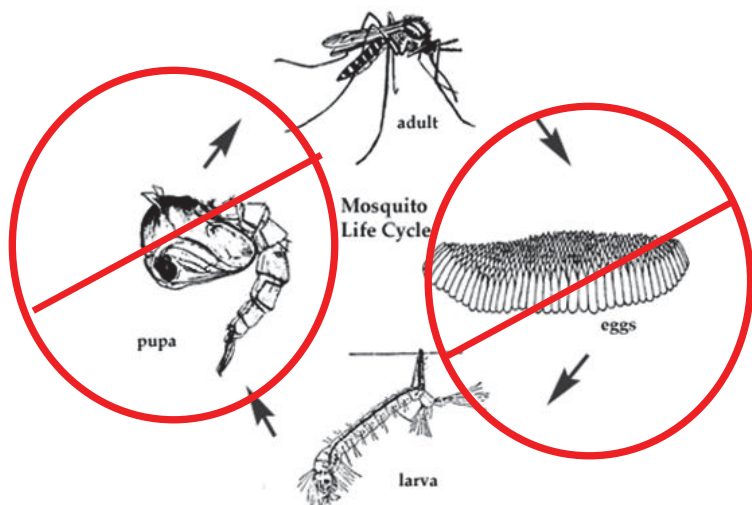
In the treatment of corral lots, feedlots, swine lots and zoos, cover any exposed drinking water, drinking water fountains, and animal feed before application.

#### MOSQUITO SPECIES CONTROLLED:

Pyriproxyfen effectively controls several mosquito species which can vector West Nile Virus, Dengue, Eastern equine encephalitis (EEE), Western equine encephalitis (WEE), and St. Louis encephalitis (SLE), and dog heartworm in the USA. These include:

*Aedes aegypti*  
*Ae. albopictus*  
*Ae. vexans*  
*Anopheles quadrimaculatus*  
*Culex pipiens*  
*Cx quinquefasciatus*  
*Cx. tarsalis*

*Cx. restuans* and other *Cx. spp.*  
*Ochlerotatus stimulans*  
*Ochlerotatus nigromaculis*  
*Ochlerotatus taeniorhynchus*  
*Ochlerotatus sollicitans*  
*Ochlerotatus triseriatus*  
*Psorophora columbiae*



Introduction of Sumilarv 0.5g into larval habitats where mosquitoes breed and develop will prevent adult mosquito emergence and affects reproductive viability of exposed mosquito eggs and adult female mosquitos. Frequency of application will depend on three factors: dose rate, water quality (e.g. pollution) and dilution caused by rain fall or removal & replenishment of water within the treatment site. Generally repeat treatment every 4 to 5 weeks, If rain events are frequent or significant. Note: presence of actively swimming larvae after a Sumilarv 0.5g treatment is normal. Sumilarv does not act until the pupal stage of a mosquito.

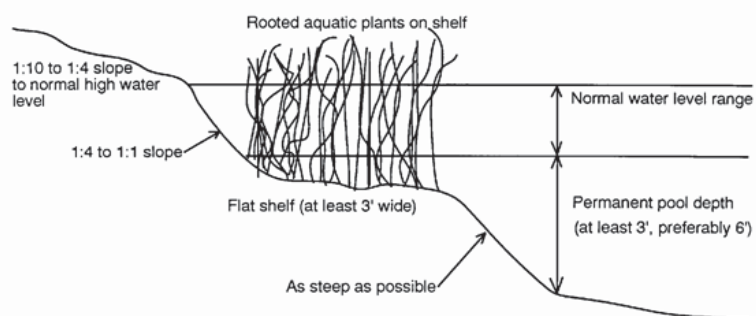
#### APPLICATION TO CATCH BASINS & WATER RENTION PONDS

Individual catch basins are one of the main breeding sites for mosquitoes that can transmit West Nile virus and cause biting nuisance in urban, suburban and rural environments. Sumilarv 0.5G can be applied to catch basins by dropping them in at the rate specified on this label.

The granules may be applied as a pre-treatment to mosquito breeding catch basins or during the season to catch basins containing mosquito larvae. Once applied, Sumilarv 0.5G will be unaffected by dry, hot, cold or sunny conditions and will begin working when the catch basin is flooded during rain events until the active ingredient degrades below effective levels.

Treatments should be repeated every 4-5 weeks (28-35 days). More frequent applications may be necessary to achieve control of mosquito larvae if frequent rain events flush pyriproxyfen out of the catch basins.

### Typical Water Retention Pond or Storm Water Catch Basin



To determine the volume of water in gallons for a specific treatment site, use the following formulation and calculation method:

Total cubic ft. of target treatment site (ft. <sup>3</sup>) = surface area (ft. <sup>2</sup>) x average depth (ft.)

Note: 7.5 gallons per cubic ft.

Total water volume = Total cubic feet of treatment site x 7.5 gallons

### Application Rates to Use for the Control of Mosquito Larvae

Treatment site (Volume of Water in Gallons)	Water Depth Less than or Equal to (ft)	Amount of Sumilarv <sup>®</sup> 0.5G (grams)	lb AI Sumilarv <sup>®</sup> /acre based on 1 or 2 basins/acre
0 – 500	1	10	0.00011
500 – 1500	2	30	0.00033
1500 – 3000	4	60	0.00066
3000 – 4500	6	90	0.00099
4500 – 6000	8	120	0.00132

**Sumilarv<sup>®</sup> 0.5G can be applied only to sites that do not drain into natural water bodies.** Apply at the rate specified in the application rate table above to the following sites:

**TEMPORARY OR PERMANENT WATER HOLDING SITES:**

Ornamental ponds, fountains, cesspools, abandoned swimming pools, gutters, construction site depressions, septic tanks, flooded basements, gutters, animal waste lagoons, livestock runoff lagoons, sewers, waste water impoundments associated with organic pollutants & industrial run offs, waste settling ponds, tire tracks, landfills, salvage yards, tire dumps, vehicle impounds, junk yards, manmade depressions and vegetation-choked phosphate pits.

**NATURAL AND ARTIFICIAL WATER HOLDING CONTAINERS:**

Tires, hollow trees and tree holes, potted plants, bird baths, rain barrels, flooded roof tops, flower pots, buckets, and abandoned vehicles.

**STORAGE AND DISPOSAL**

Do not contaminate water, food or feed by storage and disposal.

PESTICIDE STORAGE: Keep this product in its tightly closed original container. Store in a cool dry (preferably locked) area that is away from water, other pesticides fertilizers, veterinary supplies, food or feed, in a place that is inaccessible to children and animals.

PESTICIDE DISPOSAL: To avoid wastes, use all material in this container by application according to label directions. If wastes cannot be avoided, offer remaining product to a waste disposal facility or pesticide disposal program.

CONTAINER HANDLING: Nonrefillable Container. Do not reuse or refill this container. Offer for recycling if available, or puncture and dispose of empty container in a sanitary landfill, or by other procedures approved by state and local authorities.