

SHAKE WELL B  
spray as directec  
soft cloth or fine

28022-406

EVERCIDE® Horse & Dog Spray 28022

**MGK®**

McLAUGHLIN  
GORMLEY  
KING COMPANY

Do not apply in a

**DIRECTIONS:**

To operate spray  
[for] cracks and c  
position.) [After

For best results,  
electrical equipr

HORSES, PONI  
Stable Flies, Hor  
Flies, Mosquitoe  
Punkies and No-  
Indian Meal, Ang  
Star, Deer, Othe

For initial treatm  
treatment every  
washed or expo:

USE AS A WIPE  
the point of dripp  
hair growth. Gi  
flies most often  
on your horses.  
the coat.

USE AS A ROL'  
mouth. May als  
application to ey  
2 to 3 days.

USE AS A SPR  
the cap onto the  
trigger to spray)  
by flies. Do not  
thoroughly to br

8810 Tenth Avenue N. / Minneapolis, Minnesota 55427-4372 U.S.A. - Telephone (763) 544-0341

( ) indicates optional language

Ready to Use Insecticide & Repellent

For Use Only on Horses, Ponies, Dogs, and as a Premise spray

For Use Only on Horses and Ponies

Kills and Repels (More Than 70 Species Including): Biting Flies, Stable Flies, Horn Flies, House Flies, Face Flies, Horse Flies, Deer Flies, Gnats, No-See-Ums, Carpenter Bees, Fleas, Ticks, Chiggers, Lice and Mosquitoes including Culex species which may transmit West Nile Virus.

Kills Insects On Contact: Cockroaches, Scorpions, Beetles, Centipedes, Millipedes, Fire Ants, Carpenter Ants, Crickets, and Spiders including, Black Widows on premises.

Rapid knockdown, kill and repellency (for up to 14 days)

Also approved for use on dogs and use as a premise spray

Kills (Over 70 Species of) Flying and Crawling Insects on Contact

**ACTIVE INGREDIENTS:**

• Permethrin .....	0.20%
• Pyrethrins .....	0.10%
** N-Octyl bicycloheptene dicarboximide .....	0.50%
OTHER INGREDIENTS .....	99.20%
	100.00%

• Cis, trans isomers ratio: Min. 35% (+ or -)trans and Max. 65% (+ or -)cis

\*\* MGK® 264 Insecticide Synergist

EVERCIDE®, MGK® - Registered trademarks of McLaughlin Gormley King Company

**KEEP OUT OF REACH OF CHILDREN**

**CAUTION**

FIRST AID	
IF SWALLOWED:	<ul style="list-style-type: none"> <li>• Immediately call a poison control center or doctor.</li> <li>• Do not induce vomiting unless told to do so by poison control center or doctor.</li> <li>• Do not give any liquid to the person.</li> <li>• Do not give anything by mouth to an unconscious person.</li> </ul>
IF ON SKIN OR CLOTHING:	<ul style="list-style-type: none"> <li>• Take off contaminated clothing.</li> <li>• Rinse skin immediately with plenty of water for 15-20 minutes.</li> <li>• Call a poison control center or doctor for treatment advice.</li> </ul>
Have the product container or label with you when calling a poison control center or doctor, or going for treatment. For information regarding medical emergencies or pesticide incidents, call 1-888-740-8712.	

Net Contents \_\_\_\_\_  
Manufactured by:  
Mc LAUGHLIN GORMLEY KING COMPANY  
8810 Tenth Avenue North  
Minneapolis, MN 55427

EPA Reg. No. 1021-1817

EPA Est. No. 1021-MN-2

Stays active for up to 14 days

Kills fleas and ticks on dogs

Effective long-term control (for up to 14 days)

Sweat and Water Resistant (Proof) (Formula)

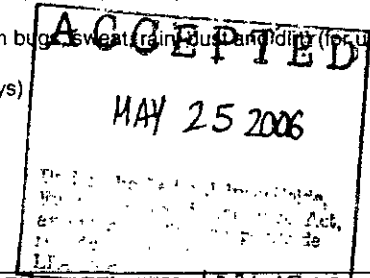
Sweat (and Water) Protection

Weatherproof formula binds to the hair shaft to repel and protect (from listed insects, sweat, rain, dust and dirt for up to 14 days)

Weatherproof formula repels and protects (from bugs, sweat, rain, dust and dirt) (for up to 14 days)

Protection for pastured horses (for up to 14 days)

Works Rain or Shine



**PRECAUTIONARY STATEMENTS 1021-1817**  
**HAZARDS TO HUMANS AND DOMESTIC ANIMALS**

**CAUTION**

Harmful if absorbed through the skin. Avoid contact with skin, eyes, or clothing. Wash hands thoroughly after handling and before eating, drinking, chewing gum, or using tobacco. Remove and wash contaminated clothing before reuse.

**ENVIRONMENTAL HAZARDS**

This pesticide is extremely toxic to fish and aquatic invertebrates. Do not apply directly to water. Do not contaminate water when disposing of equipment wash waters or rinsate. This pesticide is toxic to bees exposed to direct treatment on blooming crops or weeds. Do not apply this product or allow drift when bees are actively visiting treatment area.

**PHYSICAL AND CHEMICAL HAZARDS**

Do not apply this product around electrical equipment due to the possibility of shock hazard.

EVERCIDE® Horse & Dog Spray 28022 is an outstanding value because it is proven to kill and repel (more than 70 species of) flying, crawling, creeping and biting pests. It is approved for use on horses, ponies, and dogs and as a premise spray.

**DIRECTIONS FOR USE**

It is a violation of Federal Law to use this product in a manner inconsistent with its labeling.

**READ ALL DIRECTIONS COMPLETELY BEFORE USE**

1021-1817

05/25/2006

1/2

**SHAKE WELL BEFORE USE** – Ready to use. No mixing necessary. Hold container upright and spray as directed. EVERCIDE® Horse & Dog Spray 28022 may be applied directly with either a soft cloth or fine mist spray.

Do not apply in any room while people are present. Avoid contamination of food or feedstuff.

**DIRECTIONS:**

To operate sprayer, [turn tip to proper setting [for] (broad) (fine)] spray surfaces or pin stream [for] cracks and crevices, and pump trigger to spray as directed. [Do not operate in OFF position.] [After use, turn tip to OFF to avoid accidental spraying.]

For best results, follow directions for specific use areas. Do not use this product in or on electrical equipment due to possibility of shock hazard.

**HORSES, PONIES AND FOALS:** Do not apply to foals under 12 weeks of age. Kills and repels Stable Flies, Horn Flies, House Flies, Face Flies, Horse Flies, Deer Flies, Cluster Flies, Sciarid Flies, Mosquitoes including Culex species which may transmit West Nile Virus, Gnats, Midges, Punkies and No-See-Ums, Carpenter Bees, Moths including Almond, Chocolate, Tobacco, Indian Meal, Angoumois Grain, and other flying moths, Fleas, Ticks including Grown Dog, Lone Star, Deer, Other Ixodid Species, American Dog, and Gulf Coast), Chiggers and Lice.

For initial treatment, apply 1-2 ounces daily for 2 to 3 days. (As infestation subsides, repeat treatment every 7-14 days or as prescribed by a veterinarian). Also re-apply every time animal is washed or exposed to heavy rain.

**USE AS A WIPE ON:** Brush animal to remove excess dirt and dust. Moisten but do not wet to the point of dripping a soft cloth and rub over the hair. It is best to apply by rubbing against the hair growth. Give special attention to the legs, shoulders, shanks, neck and facial areas where flies most often are seen. Only a light application is required. Avoid using an excessive amount on your horses. Do not wet skin. After application, brush thoroughly to bring out bright sheen on the coat.

**USE AS A ROLL ON:** Remove cap from bottle. Apply around animal's nose, eyes, ears and mouth. May also be used as a spot treatment on areas where flies gather. Avoid direct application to eyes, nose and mouth. Replace cap after use. For initial treatment apply daily for 2 to 3 days.

**USE AS A SPRAY:** (Remove the cap and heat seal. Insert the hose into the bottle and secure the cap onto the bottle). (Activate the sprayer by pumping the handle 3 to 4 times. Press the trigger to spray). Apply to face, legs, flanks, top line, and other body areas commonly attacked by flies. Do not wet horse's skin or exceed two ounces per application. After application, brush thoroughly to bring out a bright sheen on the coat.

**DOGS:** Kills and repels fleas, ticks and lice. Consult a veterinarian before using this product on debilitated, medicated, aged, pregnant or nursing animals. Do not apply to puppies under the age of 12 weeks.

Sensitivities may occur after using ANY pesticide product for pets. If signs of sensitivity occur, bathe your pet with mild soap and rinse with large amounts of water. If signs continue, consult a veterinarian immediately.

Cover animal's eyes with a hand. Do not spray directly on mouth, nose and eyes. Spray neck, ears and chest until damp. With fingertips, rub into face, and around mouth, nose, and eyes. Then spray from the neck to the tail, finishing legs last. For best penetration of spray to skin and on heavily coated animals, direct spray against the natural lay of the hair, spraying the ruffled hair directly behind the hand. Make sure the spray thoroughly wets ticks. (When used on miniature and toy breeds of dogs, towel dry the animal after ½ hour if not completely dry). Avoid contact with genitalia.

**USE AS A PREMISE SPRAY (Barns, Stables, Farms, Farm Building, Buildings housing animals, Homes:** Kills insects on contact such as: Cockroaches, including Smoky Brown, Brown Banded, Asian, German, American, Australian and Oriental Cockroaches, Scorpions, Black Widow Spiders, Cellar Spiders, Grain Mites, Clover Mites, Beetles, (including Carpet, Flat Grain, Flour, Cigarette, Confused Flour, Drugstore, Lesser Grain Borer, Merchant Grain, Saw-toothed Grain, Warehouse, Red Flour, Ground, Elm Leaf), Rice Weevils, Centipedes, Millipedes, Fire Ants, Carpenter Ants, Foraging Ants and Pharaoh Ants, Palmetto Bugs, Water Bugs, Cadelles, Indian Meal Worms, Sowbugs, Boxelder Bugs, Earwigs, Pillbugs, Firebrat, Silverfish, Clothes Moths, Booklice, and Crickets.

In the home, remove all exposed food and cooking utensils. Cover all food handling surfaces or was thoroughly after treatment and before use.

Spray in areas where insects congregate. Direct spray to contact insects for rapid knockdown and kill. Spray around outside of door facings and screens to render area unattractive to insects. This will help to repel insects and prevent entrance into building.

**STORAGE AND DISPOSAL**

Do not contaminate water, food or feed by storage or disposal.

**STORAGE:** Store product with spray nozzle closed. Store in a cool, dry storage area, preferably one that can be locked. Store in the original container. Store container upright.

**DISPOSAL:**

If empty: Do not reuse this container. Place in trash or offer for recycling if available.

If partly filled: Call your local solid waste agency or 1-800-CLEANUP for disposal instructions. Never place unused product down any indoor or outdoor drain.

2/2