

Please read instructions before completing form



United States Environmental Protection Agency Washington, DC 20460

Registration Amendment Other X OPP Identifier Number

Application for Pesticide - Section I

1. Company/Product Number 1021-1760
2. EPA Product Manager George LaRocca
3. Proposed Classification None Restricted
4. Company/Product (Name) EVERCIDE Outdoor Insect Control 2790
5. Name and Address of Applicant McLAUGHLIN GORMLEY KING COMPANY
6. Expedited Review. In accordance with FIFRA Section 3(c)(3)(b)(i), my product is similar or identical in composition and labeling to:
EPA Reg. No. NOTIFICATION
Product Name APR 27 2006

Section - II

Amendment - Explain below. Final printed labels in response to Agency letter dated
Resubmission in response to Agency letter dated "Me Too" Application.
Notification - Explain below. Other - Explain below.

Explanation: Use additional page(s) if necessary. (For section I and Section II.)

By notification, we are correcting an error by deleting text to eliminate contradictory statements.

Section - III

1. Material This Product Will Be Packaged In: Child-Resistant Packaging, Unit Packaging, Water Soluble Packaging, 2. Type of Container Metal, Plastic, Glass, Paper, Other
3. Location of Net Contents information Label, Container, 4. Size(s) Retail Container, 5. Location of Label Directions On Label, On Labeling accompanying product
6. Manner in Which Label is Affixed to Product Lithograph, Paper glued, Stenciled, Other

Section - IV

1. Contact Point (Complete items directly below for identification of individual to be contacted, if necessary, to process this application.)
Name Thomas A. Lennan, Title Registration Specialist, Telephone No. (763) 544-0311
Certification I certify that the statements I have made on this form and all attachments thereto are true, accurate and complete.
2. Signature [Signature], 3. Title Registration Specialist
4. Typed Name Thomas A. Lennan, 5. Date 3/24/2006
6. Date Application Received (Stamped)

APR 27 2006

MGK®McLAUGHLIN
GORMLEY
KING COMPANY

8810 Tenth Avenue N. / Minneapolis, Minnesota 55427-4372 U.S.A. - Telephone (763) 544-0341

[] Denotes optional language

- For Use on Residential Areas Such as: Lawns, Ornamentals, Porches, Patios, Foundations, Wood Piles, Stored Lumber, Trench Around Building Foundation
- CONTROLS WOOD DESTROYING INSECTS
- Concentrated, Water Dilutable Product to control wood destroying, home invading and lawn insects
- Aids in Reducing Annoyance from Mosquitoes and Other Flying Insects
- Controls Wood Destroying Insects such as Termites, Carpenter Ants, Carpenter Bees, Powder Post Beetles, Deathwatch Beetles
- Kills Home Invading Pests Outdoors such as Ants, Beetles, Box Elder Bugs, Cockroaches, Crickets, Earwigs, Fleas, Ticks, Scorpions and other crawling and flying insects
- Kills Deer Ticks that may Transmit Lyme Disease
- Treats 22 linear feet for Termites
- For homeowner post construction use only
- Effective as an outdoor home barrier spray against listed crawling pests
- Kills Ants (including Fire Ants) and other home invading pests

Optional wording when Booklet Label is used

[OPEN Resealable Label for Directions and Precautions
PRESS to reuse]

ACTIVE INGREDIENT:

• Permethrin (3-phenoxyphenyl)methyl(±)-cis,trans-3-(2,2-dichloroethenyl)-2,2-dimethylcyclopropanecarboxylate	9.00%
** OTHER INGREDIENTS.....	91.00%
	100.00%

• Cis,trans ratio: Min. 35% (±) cis and max 65% (±) trans

** Contains petroleum distillates

EVERCIDE® - Registered trademark of McLaughlin Gormley King Company

KEEP OUT OF REACH OF CHILDREN

CAUTION

FIRST AID

IF SWALLOWED:	<ul style="list-style-type: none"> • Immediately call a poison control center or doctor. • Do not induce vomiting unless told to do so by a poison control center or doctor. • Do not give any liquid to the person. • Do not give anything by mouth to an unconscious person.
IF IN EYES:	<ul style="list-style-type: none"> • Hold eye open and rinse slowly and gently with water for 15 – 20 minutes. • Remove contact lenses, if present, after the first 15 minutes. • Call a poison control center or doctor for treatment advice.
IF ON SKIN OR CLOTHING:	<ul style="list-style-type: none"> • Take off contaminated clothing. • Rinse skin immediately with plenty of water for 15 – 20 minutes. • Call a poison control center or doctor for treatment advice.

Have the product container or label with you when calling a poison control center or doctor, or going for treatment. For information regarding medical emergencies or pesticide incidents, call 1-888-740-8712.

NET CONTENTS _____

Manufactured by:
Mc LAUGHLIN GORMLEY KING COMPANY
8810 Tenth Avenue North
Minneapolis, MN 55427

EPA Reg. No. 1021-1760

EPA Est. No. 1021-MN-2

PRECAUTIONARY STATEMENTS
HAZARDS TO HUMANS AND DOMESTIC ANIMALS**CAUTION**

Causes eye irritation. Harmful if swallowed, inhaled, or absorbed through skin. Avoid contact with skin, eyes, or clothing. Avoid breathing vapor or spray mist. Wash thoroughly with soap and water after handling and before eating, drinking, chewing gum, or using tobacco. Remove and wash contaminated clothing before reuse.

ENVIRONMENTAL HAZARDS

This pesticide is extremely toxic to fish. Do not apply directly to water. Do not contaminate water when disposing of equipment wash waters or rinsate. Drift and runoff may be hazardous to aquatic organisms in water adjacent to treated areas. This product is highly toxic to bees exposed to direct treatment on blooming crops or weeds. Do not apply this product or allow it to drift to blooming crops or weeds while bees are actively visiting the treatment area.

DIRECTIONS FOR USE

It is a violation of Federal Law to use this product in a manner inconsistent with its labeling.

GENERAL INFORMATION:

1 Tablespoon (Tbs) = 3 teaspoons (tsp) 1 fl oz = 2 Tbs 4 fl oz = 1/2 cup

SHAKE WELL BEFORE USE

Specially Formulated for residential use. DO NOT USE INSIDE DWELLINGS.

This product is easy to apply and can be used to control wood destroying, home-invading, and lawn insects. This product may be used for treatment of localized areas of wooden structures, wood piles, and stored lumber to control wood infesting borers, carpenter ants, and carpenter

bees. Do not spray animals with this product. Do not allow people or pets to enter treated area until after spray has dried.

HOW TO APPLY:

This product may be applied using a hose-end sprayer, pump [up] [style] pressure sprayer, by watering [sprinkling] can [or by Mosquito 86™ applicator]. Carefully dilute the recommended amount of concentrate and water according to the desired insect control directions. Using a clean sprayer, apply insecticide when insects first appear and repeat as necessary. Flush sprayer or watering can with clean water after each use.

LAWN PESTS: Ants, Armyworms, Brown Dog Ticks, Chinch Bugs, Crickets, Cutworms, Deer Ticks, Fleas, Grasshoppers, Japanese Beetle Grubs, Mole Crickets, Pillbugs, and Millipedes: Home lawns should not be longer than 3 inches at time of application. Use 4 fluid ounces of concentrate to 5 gallons of water for coverage of 800 square feet. For heavy infestations, repeat application after 2 weeks.

FOR SURFACE INSECT CONTROL (Armyworm, Cutworms, Fleas, etc.): For optimum control of surface feeding insect pests, delay watering or mowing for 12 to 24 hours

THATCH INHABITATING INSECT CONTROL (Chinch Bugs, Pillbugs, etc.): Lightly irrigate with up to 1/2 inch of water after application Evercide® Outdoor Insect Control 2790 into the thatch layer. If irrigation is not available, then use high water application rates for optimum results.

SUBSURFACE INSECT CONTROL (Mole Crickets, Grubs, etc.): Apply to lawns wet with dew, rain, or irrigation. For optimum results, immediately after application, water-in with 1/4 to 1/2 inch of water for optimum results.

ORNAMENTALS IN RESIDENTIAL LANDSCAPED AREAS (Including Trees, Shrubs, Flowers, Evergreens, Foliage Plants, and Ground Covers): Ants, Aphids, Bagworms, Beet Armyworms, Cabbage Loopers, Citrus Thrips, Fungus Gnats, Heliothis spp., Japanese Beetles, Lace Bugs, Leaf Feeding Caterpillars, Leafminers, Leafhoppers, Leafrollers, Lygus Bugs, Mealybugs, Root Weevils (Adult), and Whiteflies: Dilute 5 teaspoons of concentrate in 1 gallon of water. Apply sufficient volume of water to adequately cover foliage. Apply product when insects appear or feeding is noticed. Before treating a large number of plants, treat a few plants and re-check prior to full-scale application. Direct application to blooms may cause browning of petals. Repeat application as needed to maintain control.

FIRE ANT MOUNDS: Dilute 5 teaspoons of concentrate in 1 gallon of water. Using a sprinkling can, apply 1 or 2 gallons of diluent evenly over and around each mound in a 4-foot diameter circle until wet. Apply gently to avoid disturbing ants and causing them to move and form new mounds. For best results, apply in cool weather, such as in early morning or late evening hours. Do not apply in the heat of the day. Treat new mounds as they appear.

[TREATMENT FOR] HOME-INVADING PESTS – OUTDOORS including Ants, Asian Cockroaches, Bees, Beetles, Boxelder Bugs, Centipedes, Clover Mites, Cockroaches, Crickets, Earwigs, Elm Leaf Beetles, Firebrats, Fleas, Flies, Ground Beetles, Gypsy Moths (adult and caterpillar), Hornets, House Flies, Millipedes, Mosquitoes, Scorpions, Silverfish, Sowbugs, Spiders (including Black Widow and Brown Recluse), Ticks, Wasps, and Yellow Jackets: For use in hose-end sprayer, tank-type sprayer, or sprinkling can. Dilute 5 teaspoons of concentrate in 1 gallon of water to cover 300 square feet or 60 linear feet. To keep insects from entering the house, spray a 3-foot band of soil around the house next to the foundation. Also, spray the foundation of the house to a height of 2 feet. Also spray walks, garbage cans and garbage areas, window frames and doorways, porches, patios and shrubs and trees. **DO NOT** treat pets with this product. **DO NOT** use this product indoors.

[When using with the Mosquito 86™ sprayer for outdoor mosquito and flying insect control:

Dispense 7.5 teaspoons (1 ¼ oz.) of concentrate into sprayer tank. Fill tank with 1.5 gallons of water (to the fill line) to cover 450 square feet or 90 linear feet. Gently tighten the cap. Put the backpack on and tighten the straps by pulling downward. Attach the quick disconnect to the blower tubing; push together until it clicks. Start the blower and set to highest rpm setting. Squeeze together the two sides of the shutoff valve located on top of the blower tube together to begin fluid flow. Begin spraying. Spray with a brisk back and forth motion, walking along as you spray, keeping the wind at your back. **ALWAYS KEEP THE NOZZLE MOVING BRISKLY BACK AND FORTH.** To keep insects from entering the house, spray a 3-foot band of soil around the house next to the foundation and the house foundation to a height of 2 feet; also spray walks, garbage cans and garbage areas, window frames, doorways, porches, patios, and shrubs and trees.

When spraying is complete, push button on shutoff to stop fluid flow prior to reducing blower speed. Turn off the blower. Rinse tank with clean water; then fill tank half full with water and flush sprayer. Allow tank and sprayer to air dry before storing.]

MOSQUITOES – OUTDOORS: Mosquitoes coming to rest on areas treated for the control of lawn and home-invading pests will be killed for varying periods of time after application, depending on exposure of treated areas to weathering conditions.

TREATMENT FOR WOOD DESTROYING PESTS – OUTDOORS including Carpenter Ants, Carpenter Bees, Powder Post Beetles, False Powder Post Beetles, Deathwatch Beetles, Old House Borers, and Ambrosia Beetles: Treat localized areas of infested wood. Add 7 1/4 fluid ounces (14 ½ Tbs) to 1 gallon of water.

HOW TO APPLY

Fences and Outdoor Wood Surfaces of Building: Apply evenly on wood surfaces with a paintbrush. Allow to dry and repeat application to ensure the insecticide soaks into the wood.

Wood Piles and Stored Lumber: Use a hose-end or tank sprayer or sprinkling can to deliver a coarse drenching spray. Do not apply to firewood.

[TREATMENT FOR] SUBTERRANEAN TERMITES – OUTDOORS: For outdoor, homeowner post-construction use only. **DO NOT** use under slabs, in crawl spaces, or indoors. If termites are found within the house or structure, contact a licensed pest control operator for treatment.

MIXING INSTRUCTIONS FOR TERMITE CONTROL: Add 7 1/4 fluid ounces (14 ½ Tbs) to 1 gallon of water for each 5 linear feet (1 quart of EVERCIDE® Outdoor Insect Control 2790 makes 4.4 gallons of diluted solution and covers 22 linear feet. 1/2 gallon of EVERCIDE® Outdoor Insect Control 2790 makes 8.8 gallons of diluted solution and covers 44 linear feet).

HOW TO APPLY

TRENCH TREATMENT: Remove all wood debris and wood forms.

Poured Concrete Foundations: Dig a trench next to the foundation 6 inches wide and 4 inches deep or down to the top of the footing, whichever is less.

Brick and Block Foundations: Dig a trench 6 inches wide and 12 inches deep. To avoid shifting your house foundation, never dig below the top of the footing. Mix diluted product into soil as soil is replaced in the trench.

FENCE POSTS: Using a sprinkling can, pour 1/2 gallon of diluted product into fence post hole and add another 1/2 gallon to the soil when filling the hole so that all the fill soil is treated to form a protective barrier.

• WHEN TO APPLY

Only reapply for subterranean termites when there has been a disruption of the chemical barrier in the soil due to construction, excavation, landscaping, etc. Reapply as a spot treatment to those areas. Avoid annual reapplication of entire premises.

IMPORTANT: DO NOT treat structures that contain cisterns or wells. DO NOT treat soil in the vicinity of wells, cisterns, or ponds. For those situations, contact your County Cooperative Extension Agent or consult a commercial pest control service. DO NOT treat soil that is water saturated or frozen, or in any conditions where run-off or movement from the treatment area (site) is likely to occur. DO NOT apply while it is raining. DO NOT use on pets. DO NOT use on edible or ornamental plants. Immediately rinse with water spray drift onto these plants.

STORAGE AND DISPOSAL

Do not contaminate water, food, or feed by storage and disposal.

STORAGE: Keep container closed when not in use. Do not store near food or feed. Protect from freezing. In case of spill or leak on floor or paved surfaces, soak up with sand, earth, or synthetic absorbent. Remove to chemical waste area.

DISPOSAL:

If empty: Do not reuse this container. Place in trash or offer for recycling if available.
If partly filled: Call your local solid waste agency or 1-800-CLEANUP for disposal instructions. Never place unused product down any indoor or outdoor drain.

2/10

Mosquito 86 Assembly and Usage

1. Remove the following items from box:

- Tank/Harness Assembly
- Nozzle/Pipe Assembly
- Plastic bag containing hose loops for blower

2. Remove the hose loops from the poly bag and attach as shown to the two small tabs on the blower handle with the plastic push snap connectors.



3. Attach the nozzle/pipe assembly to the blower.



4. Thread the hose end through loops to the back of the blower.



5. Dispense 1 1/4 oz. of Mosquito 86 Agent E into the tank.



6. Add water to the tank up to the fill line (1.5 gallons). Gently tighten the cap.



7. Put the backpack on and tighten the straps by pulling downward.



8. Attach the quick disconnect to the blower tubing. Push together until it clicks.



9. Start the blower and set to highest rpm setting.



10. Squeeze the two sides of the shutoff valve located on top of the blower tube together to begin fluid flow. Begin spraying. (See instruction band on blower pipe).



11. Spray with a back and forth motion, walking along as you spray keeping the wind at your back. **ALWAYS KEEP THE NOZZLE MOVING BRISKLY BACK AND FORTH.**



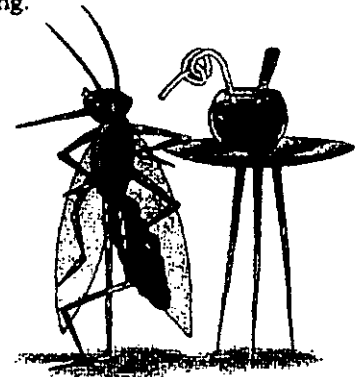
12. When spraying is complete, push button on shutoff to stop fluid flow prior to reducing blower speed.



Turn off the blower.

13. Rinse tank with clean water, then fill tank half full with water and flush sprayer. Allow tank and sprayer to air dry before storing.

ENJOY
YOUR
YARD
AGAIN!!!



Questions? Call 1-847-639-8686 or visit www.mosquito86.com



McLAUGHLIN GORMLEY KING COMPANY
8810 Tenth Avenue North • Minneapolis, MN 55427-4319 U.S.A.
763-544-0341 • 800-645-6466 • Fax 763-544-6437 • www.mgk.com

March 24, 2006

Document Processing Desk (NOTIF)
U.S. ENVIRONMENTAL PROTECTION AGENCY
Office of Pesticide Programs (7504C)
Ariel Rios Building
1200 Pennsylvania Avenue
Washington, DC 20460-001

Via Courier

Subject: EVERCIDE® Outdoor Insect Control 2790
EPA Reg. No. 1021-1760
Notification per PR Notice 98-10

Dear Sir or Madam:

By notification, we are correcting an error by deleting text to eliminate contradictory statements on the label. Under the Ornamentals in Residential Landscaped Areas heading we have directions to spray to cover foliage. Under the heading Treatment for Home Invading pests-Outdoors, which has the same dilution rate as the ornamental use pattern, we have directions to avoid spraying foliage. We are deleting "avoid spraying foliage" in order to correct the contradiction on the label since this product is intended to be used on foliage and ornamental plants at the listed dilution rate.

Enclosed are 2 copies of the label, 1 copy has the changes highlighted in yellow.

I certify that no other changes have been made to the labeling or the confidential statement of formula of this product. I understand that it is a violation of 18 U.S.C. Sec. 1001 to willfully make any false statement to EPA. I further understand that if this notification is not consistent with the terms of PR Notice 98-10 and 40 CFR 152.46, then this product may be in violation of FIFRA and I may be subject to enforcement action and penalties under sections 12 and 14 of FIFRA.

If there are any questions or you need anything further, please contact this office.

Sincerely,

McLAUGHLIN GORMLEY KING COMPANY

Thomas A. Lennan
Registration Specialist

Enclosure