



**OFFICE OF CHEMICAL SAFETY AND POLLUTION PREVENTION**

WASHINGTON, D.C. 20460

September 05, 2025

**SENT BY EMAIL**

Chantha Coursolle  
chantha.coursolle@mgk.com  
MCLAUGHLIN GORMLEY KING COMPANY, D/B/A MGK

Subject: Labeling Notification per Pesticide Registration Notice (PRN) 98-10 - Added optional images to the label  
Product Name: EVERCIDE PERMETHRIN MULTI-PURPOSE SPRAY 27781  
Admin Number: 1021-1740  
EPA Receipt Date: 08/28/2025  
Action Case Number: 00665720

Dear Chantha Coursolle:

The U.S. Environmental Protection Agency is in receipt of your application for notification under Pesticide Registration Notice 98-10 for the above referenced product. The EPA has conducted a review of this request for its applicability under PRN 98-10 and finds that the action requested falls within the scope of PRN 98-10.

The labeling submitted with this application has been stamped "Notification" and will be placed in our records.

Should you wish to add/retain a reference to your company's website on your label, then please be aware that the website becomes labeling under the Federal Insecticide, Fungicide, and Rodenticide Act and is subject to review by the EPA. If the website is false or misleading, the product will be considered to be misbranded and sale or distribution of the product is unlawful under FIFRA section 12(a)(1)(E). 40 CFR § 156.10(a)(5) lists examples of statements the EPA may consider false or misleading. In addition, regardless of whether a website is referenced on your product's label, claims made on the website may not substantially differ from those claims approved through the registration process. Therefore, should the EPA find or if it is brought to our attention that a website contains statements or claims substantially differing from statements or claims made in connection with obtaining a FIFRA section 3 registration, the website will be referred to the EPA's Office of Enforcement and Compliance Assurance.

If you have questions, please contact Robert Mitchell via email at [mitchell.robert@epa.gov](mailto:mitchell.robert@epa.gov).

Sincerely,

Elizabeth Fertich, Product Manager 04  
IVB1, RD  
Office of Pesticide Programs

# EVERCIDE® PERMETHRIN Multi-Purpose Spray 27781

## EVERCIDE® Permethrin Multi-Purpose Spray 27781

### MASTER LABEL

SUB-LABEL A: RESIDENTIAL USE

SUB-LABEL B: COMMERCIAL USE

### NOTIFICATION

1021-1740

The applicant has certified that no changes, other than those reported to the Agency have been made to the labeling. The Agency acknowledges this notification by letter dated:

09/05/2025

#### ACTIVE INGREDIENT:

Permethrin [\* (3-Phenoxyphenyl) methyl (+ or -) cis-trans-3-(2,2-dichloroethenyl) 2,2-dimethylcyclopropanecarboxylate) .....

0.50%

OTHER INGREDIENTS .....

99.50%

100.00%

\* Cis-trans isomers ratio: Min. 35% (+ or -) cis and Max. 65% (+ or -) trans

EVERCIDE® - Registered trademark of McLaughlin Gormley King Company

KEEP OUT OF REACH OF CHILDREN  
**CAUTION**

Manufactured by



7325 Aspen Lane North  
Minneapolis, MN 55428

EPA Reg. No. 1021-1740

EPA Est. No. 1021-MN-2

Net Contents: \_\_\_\_\_

# EVERCIDE® Permethrin Multi-Purpose Spray 27781

SUB-LABEL A: RESIDENTIAL USE

# EVERCIDE® PERMETHRIN Multi-Purpose Spray 27781

[ ] OR ( ) indicates alternate or optional wording

For domestic use both indoors and outdoors

For control of Fleas, Brown Dog Ticks, and Lice on dogs and on premises

For premise control of Ticks which may cause Lyme disease

For control of livestock pests

Controls Fleas and Ticks on dogs for 35 days

Provides 60-day [two months] control of Cockroaches

Provides 60-day [two months] control of Fleas

Provides 60-day [two months] control of stored product pests

[Protects your Animals from listed pests]

[Indoor/outdoor + on-animal use]

[Kills & repels Flies (6 types), Mosquitoes & Gnats]

[35-day control of Fleas & Ticks on dogs]

[60-day control of Cockroaches, Spiders & Ants]

[Water-based, no oily residue]

[Easy to use]

[Lock & load cartridge]

[No mixing, no handling, no mess]

[Protects your yard from biting adult mosquitoes]

[Spray (EVERCIDE® PERMETHRIN Multi-Purpose Spray 27781) before your event to kill (control) flies, mosquitoes and gnats]

[A residual barrier control product to kill mosquitoes in outdoor residential areas]

[Mosquitoes are not only a nuisance; they can transmit diseases that are a serious health threat to people and pets. With just one bite, mosquitoes can transmit West Nile Virus and encephalitis. They can also transmit heartworm disease to dogs and cats.]

[Kills Stink Bugs, Brown Marmorated Stink Bugs (BMSB), Asian Lady Beetles, and Boxelder Bugs]

[Kills and Repels mosquitoes that may carry/transmit the Zika virus]

[Kills and Repels Aedes mosquitoes that may carry/transmit the Zika virus]

[Kills and Repels Aedes mosquitoes]

[Kills and repels mosquitoes, including those/(Aedes), that may carry and transmit Zika virus]

[Kills Ticks, Mosquitoes, and Chiggers]

[Effective for 6 weeks on treated fabric]

[(EVERCIDE® PERMETHRIN Multi-Purpose Spray 27781) provides rapid kill of listed insects without objectionable residues]

## ACTIVE INGREDIENT:

Permethrin [\* (3-Phenoxyphenyl) methyl (+ or -) cis-trans-3-(2,2-

dichloroethenyl) 2,2-dimethylcyclopropanecarboxylate] ..... 0.50%

OTHER INGREDIENTS ..... 99.50%

100.00%

\* Cis-trans isomers ratio: Min. 35% (+ or -) cis and Max. 65% (+ or -) trans

EVERCIDE® - Registered trademark of McLaughlin Gormley King Company

## KEEP OUT OF REACH OF CHILDREN CAUTION

[See back [side] [booklet] [panel] for additional precautionary statements and first aid.]

FIRST AID	
IF ON SKIN OR CLOTHING:	<ul style="list-style-type: none"><li>▪ Take off contaminated clothing.</li><li>▪ Rinse skin immediately with plenty of water for 15-20 minutes.</li><li>▪ Call a poison control center or doctor for treatment advice.</li></ul>
IF SWALLOWED:	<ul style="list-style-type: none"><li>▪ Immediately call a poison control center or doctor.</li><li>▪ Do not induce vomiting unless told to do so by a poison control center or doctor.</li><li>▪ Do not give <b>any</b> liquid to the person.</li><li>▪ Do not give anything by mouth to an unconscious person.</li></ul>
IF INHALED:	<ul style="list-style-type: none"><li>▪ Move person to fresh air.</li><li>▪ If person is not breathing, call 911 or an ambulance, then give artificial respiration, preferably mouth-to-mouth if possible.</li><li>▪ Call a poison control center or doctor for further treatment advice.</li></ul>
IF IN EYES:	<ul style="list-style-type: none"><li>▪ Hold eye open and rinse slowly and gently with water for 15-20 minutes.</li><li>▪ Remove contact lenses, if present, after the first 5 minutes, then continue rinsing eyes.</li><li>▪ Call a poison control center or doctor for treatment advice.</li></ul>
Have the product container or label with you when calling a poison control center or doctor or going for treatment. For information regarding medical emergencies or pesticide incidents, call the International Poison Center at 1-888-740-8712.	

Net Contents: \_\_\_\_\_

**PRECAUTIONARY STATEMENTS**  
**HAZARDS TO HUMANS AND DOMESTIC ANIMALS**

**CAUTION**

Harmful if inhaled or absorbed through skin. Avoid contact with skin, eyes, or clothing. Avoid breathing spray mist. Wash thoroughly after handling and before eating, drinking, chewing gum, or using tobacco. Remove and wash contaminated clothing before reuse.

**ENVIRONMENTAL HAZARDS**

This pesticide is extremely toxic to aquatic organisms, including fish and invertebrates. To protect the environment, do not allow pesticide to enter or runoff into storm drains, drainage ditches, gutters or surface waters. Applying this product in calm weather when rain is not predicted for the next 24 hours will help to ensure that wind or rain does not blow or wash pesticide off the treatment area.

This pesticide is highly toxic to bees exposed to direct treatment on blooming crops or weeds. Do not apply this product or allow it to drift to blooming crops or weeds while bees are foraging in the treatment area.

**DIRECTIONS FOR USE**

It is a violation of Federal law to use this product in a manner inconsistent with its labeling.

READ ENTIRE LABEL BEFORE EACH USE.

FOR PET USE. USE ONLY ON DOGS.

**USE RESTRICTIONS:**

**Precautions and Restrictions:**

**Entry Restrictions:**

Except when applying as a fabric treatment or to dogs or livestock, do not allow adults, children, or pets to enter until sprays have dried.

**Application Restrictions:**

Do not breathe dust, vapors, or spray mist.

Do not apply when food is present.

In the home, all food processing surfaces and utensils should be covered during treatment or thoroughly washed before use. Exposed food should be covered or removed.

Not for broadcast use on indoor residential surfaces.

All outdoor applications must be limited to spot or crack and crevice treatments only, except for the following permitted uses:

- (1) Treatment to soil or vegetation around structures;
- (2) Application to lawns, turf, and other vegetation.

Other than applications to building foundations, all outdoor applications to impervious surfaces such as sidewalks, driveways, patios, porches and structural surfaces (such as windows, doors and eaves) are limited to spot and crack and crevice applications, only.

Do not water the treated area to the point of runoff.

Do not make applications during rain.

Application is prohibited directly into sewers or drains, or to any area like a gutter where drainage to sewers, storm drains, water bodies, or aquatic habitat can occur. Do not allow the product to enter any drain during or after application.

Do not use in aircraft cabins.

Not for use in outdoor residential misting systems.

Affix trigger, pump or other type sprayer to container for application. Do not transfer to another container.

**SHAKE WELL BEFORE USING.**

Avoid contamination of feed and foodstuffs. Remove pets and birds and cover fish aquariums before surface applications. Do not use on humans. Do not allow children or pets to contact treated areas until surfaces are dry.

Do not use in commercial food/feed handling establishments, restaurants or other commercial facilities where food is commercially prepared, processed, or served. Do not use in institutions, schools, office buildings or similar commercial buildings.

#### INDOOR APPLICATION:

For spot application only. Do not use as a space spray indoors.

#### SURFACE SPRAYING:

For 60-day (two months) control of ASIAN LADY BEETLES, BOXELDER BUGS, BROWN MARMORATED STINK BUGS, STINK BUGS, COCKROACHES, WATERBUGS, PALMETTO BUGS, SCORPIONS, MILLIPEDES, CENTIPEDES, SOWBUGS, PILLBUGS, ANTS, SILVERFISH, FIREBRATS, SPIDERS, CRICKETS, CLOVER MITES, CHEESE MITES, GRANARY WEEVILS, RICE WEEVILS, CONFUSED FLOUR BEETLES, RUST RED FLOUR BEETLES, DRUGSTORE BEETLES, MEALWORMS, GRAIN MITES AND CADELLES: Direct the spray into hiding places, cracks and crevices, and behind shelves and drawers. For Silverfish, spray bookcases. For Ants, spray trails, nests and points of entry.

TO CONTROL CARPET BEETLES: Spray edges of carpeting and under carpeting and rugs. Make localized application to floor and baseboards. Spray directly into cracks, crevices and infested areas of shelving.

TO CONTROL BED BUGS: Spray mattresses lightly, particularly around tufts and seams. Take beds apart and spray in all joints. Allow to dry thoroughly before remaking bed. Treat baseboards, moldings and floors.

TO CONTROL FLEAS (ADULTS AND LARVAE) AND TICKS, INCLUDING TICKS WHICH MAY CARRY LYME DISEASE (ADULTS AND LARVAE):

Thoroughly spray infested areas, pet beds, resting quarters, nearby cracks and crevices, along and behind baseboards, moldings, window and door frames. Apply as a spot treatment to floors and floor coverings. Fresh bedding should be placed in animal quarters following treatment. Repeat treatment every 35 days as needed. Allow to dry thoroughly before allowing pets to contact treated areas. To control the source of flea infestations, treat your pet with a product registered for animal application. Also, treat your yard with a product registered for yard application.

TO CONTROL CLOTHES MOTHS: Remove any infested articles from storage, brush thoroughly and air for several hours in sunlight if possible. Apply spray liberally to empty chests, closets, bureaus and other storages directing the spray into cracks, joints and crevices. After airing, infested articles may be treated lightly keeping nozzle at least three feet from fabric to avoid staining.

TO KILL LICE AND LOUSE EGGS: Spray in an inconspicuous area to test for possible staining or discoloration. Inspect again after drying then proceed to spray entire area to be treated. Spray from a distance of 8 to 10 inches. Treat only those garments and parts of bedding including mattresses and furniture that cannot be either laundered or dry-cleaned. Allow all treated articles to dry thoroughly before use.

#### ON LIVESTOCK:

TO PROTECT CATTLE (BEEF AND DAIRY), GOATS, SHEEP, HOGS AND HORSES FROM HORN FLIES, FACE FLIES, HOUSE FLIES, MOSQUITOES AND GNATS: Apply a light mist sufficient to wet the surface of the hair. For Face Flies, spray face and head but do not spray into eyes.

TO CONTROL STABLE FLIES, HORSE FLIES AND DEER FLIES: Apply at a rate of 2 ounces per adult animal sufficient to wet the hair thoroughly. Repeat treatment daily or at intervals necessary to give continued protection.

TO CONTROL BLOOD SUCKING LICE: Apply a light mist sufficient to wet the infested areas of the animal using a stiff brush to get the spray to the base of the hair. Repeat every 3 weeks if required.

TO CONTROL POULTRY LICE: Spray roosts, walls and nests or cages thoroughly, followed by spraying over the birds with a fine mist.

TO CONTROL BED BUGS AND MITES IN POULTRY HOUSES: Spray crevices of roost poles, cracks in walls and cracks in nests where the bed bugs and mites hide.

#### ON DOGS:

Consult a veterinarian before using this product on debilitated, medicated, aged, pregnant or nursing animals. Sensitivities may occur after using ANY pesticide product for pets. If signs of sensitivity occur bathe your pet with mild soap and rinse with large amounts of water. If signs continue, consult a veterinarian immediately.

TO CONTROL FLEAS, TICKS AND LICE: Start spraying at the tail moving the dispenser rapidly and making sure that the animal's entire body is covered including the legs and under body. While spraying, fluff the hair so that the spray will penetrate to the skin. Make sure spray wets thoroughly but do not saturate animal. Do not spray into eyes or face. Avoid contact with genitalia. Use protective gloves or mitts when applying product. Repeat every 35 days as necessary for control.

NOTE: Not recommended for use on puppies less than 12 weeks old. DO NOT USE ON CATS OR KITTENS.

#### USE INSTRUCTIONS FOR CLOTHING TREATMENT:

For protection against Ticks (including those which may carry Lyme disease), chiggers and mosquitoes, apply product as directed below. For further protection, use in conjunction with an insect repellent registered for direct application to the skin and utilize the following primary preventive measures. Avoid areas where the pests are found, wear appropriate protective clothing (light-colored, long-sleeved shirt and long pants tucked into socks) and inspect body daily for ticks. Pant cuffs should be worn inside the socks or footwear to ensure full protection against ticks and chiggers.

#### INITIAL TREATMENT INSTRUCTIONS:

1. Select a well-ventilated outdoor area protected from wind and lay out the clothing to be treated (as complete outfit; shirt, trousers and socks).
2. Spray about 6 to 8 inches from surface of the [article or] clothing and spray with a slow sweeping motion to lightly moisten the surface of the fabric.
3. Continue spraying over entire [article or] outfit, until the outer surface of the fabric is moist enough to cause a slight color change or darkening. Pay special attention to socks, trouser cuffs and shirt cuffs.
4. Turn the [article or] clothing over and treat the other side as described in steps 2 & 3.
5. Hang the treated [article or] clothing and allow to dry for at least 2 hours (4 hours under humid conditions) before wearing.

#### RETREATMENT INSTRUCTIONS:

This product contains an active ingredient which actually binds to the fabric being treated, providing residual protection which lasts a minimum of six weeks, and holds up through several machine washings. DO NOT RETREAT CLOTHING MORE THAN ONCE EVERY SIX WEEKS. LAUNDRER CLOTHING AT LEAST ONCE BEFORE RETREATING. For retreatment, follow instructions for initial treatment.

## INITIAL TREATMENT INSTRUCTIONS ON NETS, TENTS, SLEEPING BAGS AND BACKPACKS:

### Do not treat inside of sleeping bag. Spray exterior surfaces of tent only.

Select a well-ventilated outdoor area protected from wind and lay out article to be treated. Spray about 6 to 8 inches from surface of the article and spray with a slow sweeping motion to lightly moisten the surface of the fabric. Continue spraying over entire article, until the outer surface of the article is moist enough to cause a light color change or darkening. Turn the article over and treat the other side as described in steps 2 and 3. Hang the treated article and allow to dry for at least 2 hours (4 hours under humid conditions) before using.

### RETREATMENT INSTRUCTIONS:

This product contains an active ingredient that actually binds to the fabric being treated, providing residual protection that lasts a minimum of six weeks. DO NOT RETREAT ARTICLES MORE THAN ONCE EVERY SIX WEEKS. For retreatment, follow instructions for initial treatment.

### OUTDOOR APPLICATION:

TO CONTROL TICKS INCLUDING TICKS WHICH MAY CARRY LYME DISEASE AND OTHER LISTED CRAWLING INSECTS (PERIMETER TREATMENT): Use EVERCIDE® PERMETHRIN Multi-Purpose Spray 27781 as a residual treatment to control TICKS including the DEER TICK (*Ixodes dammini*), LONE STAR TICK (*Amblyomma americanum*), BROWN DOG TICK (*Rhipicephalus sanguineus*), AMERICAN DOG TICK (*Dermacentor variabilis*), and WESTERN BLACKLEGGED TICK (*Ixodes pacificus*) and other listed crawling insects such as ASIAN LADY BEETLES, BOXELDER BUGS, BROWN MARMORATED STINK BUGS (BMSB) AND STINK BUGS: For each areas listed below, apply until surface is wet, but not to the point of runoff (approximately 1 gal/750-1,000 ft.).

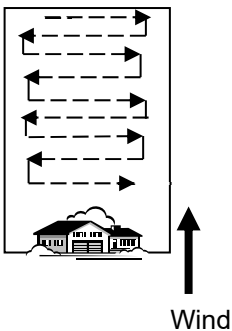
Treat around windows and doors, porches, screens, eaves, patios, garages, under stairways and in crawl spaces where these pests may enter.

Treat a band of vegetation and leaf litter 6 to 10 feet wide around and the outside of buildings to help control ticks occurring there. To help control ticks in outdoor activity areas, treat a band of vegetation and leaf litter 6 to 10 feet wide and adjacent to activity areas, especially where dense vegetation occurs.

FOR CONTROL OF GARDEN INSECTS: For use on roses, dahlias, asters and other ornamentals to kill JAPANESE BEETLES hit by spray as well as WHITEFLIES, APHIDS, EXPOSED THRIPS, SPIDERS, RED MITES, STINK BUGS, BROWN MARMORATED STINK BUGS (BMSB), BOXELDER BUGS and LEAFMINERS. May be used on plants as a multi-purpose spray in small gardens and for spot treatments of incipient insect infestations to prevent spreading in large garden areas.

May also be used on other plants such as African violets, asters, azaleas, begonias, camellias, carnations, chrysanthemums, dahlias, delphiniums, dogwoods, English ivy, euonymus, fuschia, geraniums, crassula grape vines, Kentia palms, laurels, marigolds, rhododendrons, roses, rubber plants, snapdragons, stocks, wandering Jews and zinnias.

Effective when used as directed against WHITEFLIES, APHIDS, SPIDER AND RED MITES, EXPOSED THRIPS, LACE BUGS, JAPANESE BEETLES, BOXELDER BUGS, BROWN MARMORATED STINK BUGS (BMSB), STINK BUGS, PAVEMENT ANTS, CLOVER MITES AND ARMYWORMS.



TO KILL MOSQUITOES, GNATS, AND FLIES (OUTDOOR BARRIER TREATMENT): Caution should be taken to avoid spraying when wind conditions could create a mist to blow back to the applicator. Do not apply this product in or around bodies of water. Barrier applications provide long-lasting control of adult mosquitoes by applying a residual product to cool, humid areas where adult mosquitoes congregate during sunny warm dry periods. Barrier treatments of harboring vegetation not only control adult mosquitoes within, but also prevent rapid re-infestation of residential and recreational areas.

[For use with the Clarke Mosquito Sweeper and lock & load Sweeper Cartridge: Shake cartridge gently before use. DO NOT open cartridge. Do not puncture tip. Follow equipment manufacturer's directions for loading the cartridge into the spray unit. The Clarke Mosquito Sweeper has a fixed flow rate of 3.2 fluid ounces per minute. No adjustment is necessary. One cartridge treats up to 5,000 sq. ft.] Apply when walking at a slow, comfortable pace to the perimeter of residential yards, paths, recreational or other outdoor treatment areas. Pay special attention to standing weeds, bushy non-crop areas, grasses and other areas of dense vegetation where mosquitoes may harbor. Treat a band of vegetation up to 10 feet wide. Use a sweeping motion. Ensure even coverage of entire harborage areas.

For use in open outdoor areas, begin spraying at the furthest downwind edge of the treatment area. While walking at a slow, comfortable pace, spray perpendicular to the wind pointing the nozzle downwind, until reaching the opposite edge of the treatment area. Continue this motion upwind every 10 feet until entire treatment area has been sprayed (see treatment diagram).

When spraying plants, do not operate closer than 18 inches. Use sweeping motion. Be cautious about wetting tender foliage, young plants and new growth. Do not spray plants when temperatures exceed 90°F. Directly contact insects whenever possible.

Not for use on plants being grown for sale or other commercial uses or for commercial seed production or for research purposes.



## STORAGE AND DISPOSAL

Do not contaminate water, food, or feed by storage and disposal.

### PESTICIDE STORAGE

Store in a cool, dry area. Always store pesticides in the original container. Store away from food and pet food.

### PESTICIDE DISPOSAL AND CONTAINER HANDLING

Non-refillable container. Do not reuse or refill this container.

If empty:

Place in trash or offer for recycling if available.

If partly filled:

Call your local solid waste agency for disposal instructions. Never place unused product down any indoor or outdoor drain.

[Optional storage and disposal for containers larger than 5 gallon capacity:]

## STORAGE AND DISPOSAL

Do not contaminate water, food or feed by storage and disposal.

PESTICIDE STORAGE: Store in a cool, dry place. Keep container closed.

PESTICIDE DISPOSAL: Wastes resulting from the use of this product may be disposed of on site or at an approved waste disposal facility.

### CONTAINER HANDLING & DISPOSAL:

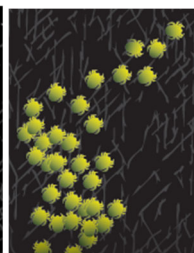
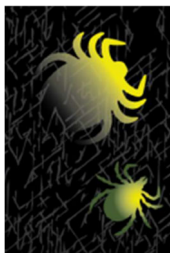
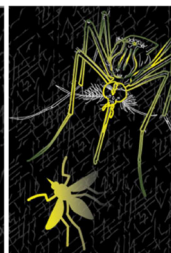
[For non-refillable containers:]

Non-refillable container. Do not reuse or refill this container. Empty the remaining contents into the application equipment or a mix tank. Fill the container  $\frac{1}{4}$  full with water. Replace and tighten closures. Tip container on its side and roll it back and forth, ensuring at least one complete revolution, for 30 seconds. Stand the container on its end and tip it back and forth several times. Turn the container over onto its other end and tip it back and forth several times. Empty the rinsate into application equipment or a mix tank or store rinsate for later use or disposal. Repeat this procedure two more times. Offer for recycling if available or reconditioning if appropriate, or puncture and dispose of in a sanitary landfill, or by other procedures approved by state and local authorities.

[For Refillable containers:]

Refillable container. Refill this container with pesticide only. Do not reuse this container for any other purpose. Cleaning before refilling is the responsibility of the refiller. To clean the container before final disposal, empty the remaining contents from this container into application equipment or mix tank. Fill the container about 10 percent full with water. Agitate vigorously or recirculate water with the pump for 2 minutes. Pour or pump rinsate into rinsate collection system. Repeat this rinsing procedure two more times. Offer for recycling if available or reconditioning if appropriate, or puncture and dispose of in a sanitary landfill, or by other procedures approved by state and local authorities.

### Optional Images for Residential Use





# EVERCIDE® Permethrin Multi-Purpose Spray 27781

SUB-LABEL B: COMMERCIAL USE

# EVERCIDE® PERMETHRIN Multi-Purpose Spray 27781

[ ] OR ( ) indicates alternate or optional wording

For control of Fleas, Brown Dog Ticks, and Lice on dogs and on premises

For premise control of Ticks which may cause Lyme disease

For control of livestock pests

Controls Fleas and Ticks on dogs for 35 days

Provides 60-day [two months] control of Cockroaches

Provides 60-day [two months] control of Fleas

Provides 60-day [two months] control of Stored Product Pests

[Protects your animals from listed pests]

[Indoor/Outdoor + on-animal use]

[Kills & repels Flies (6 types), Mosquitoes & Gnats]

[35-day control of Fleas & Ticks on dogs]

[60-day control of Cockroaches, Spiders & Ants]

[Water-based, no oily residue]

[Easy to use]

[Kills Stink Bugs, Brown Marmorated Stink Bugs (BMSB), Asian Lady Beetles, and Boxelder Bugs]

[Kills and repels mosquitoes that may carry/transmit the Zika virus]

[Kills and repels Aedes mosquitoes that may carry/transmit the Zika virus]

[Kills and repels Aedes mosquitoes]

[Kills and repels mosquitoes, including those/(Aedes), that may carry and transmit Zika virus]

[(EVERCIDE® PERMETHRIN Multi-Purpose Spray 27781) provides rapid kill of listed insects without objectionable residues]

## ACTIVE INGREDIENT:

Permethrin [\* (3-Phenoxyphenyl) methyl (+ or -) cis-trans-3-(2,2-

dichloroethenyl) 2,2-dimethylcyclopropanecarboxylate) ..... 0.50%

OTHER INGREDIENTS ..... 99.50%

100.00%

\* Cis-trans isomers ratio: Min. 35% (+ or -) cis and Max. 65% (+ or -) trans

EVERCIDE® - Registered trademark of McLaughlin Gormley King Company

KEEP OUT OF REACH OF CHILDREN

## CAUTION

FIRST AID	
IF ON SKIN OR CLOTHING:	<ul style="list-style-type: none"><li>Take off contaminated clothing.</li><li>Rinse skin immediately with plenty of water for 15-20 minutes.</li><li>Call a poison control center or doctor for treatment advice.</li></ul>
IF SWALLOWED:	<ul style="list-style-type: none"><li>Immediately call a poison control center or doctor.</li><li>Do not induce vomiting unless told to do so by a poison control center or doctor.</li><li>Do not give <b>any</b> liquid to the person.</li><li>Do not give anything by mouth to an unconscious person</li></ul>
IF INHALED:	<ul style="list-style-type: none"><li>Move person to fresh air.</li><li>If person is not breathing, call 911 or an ambulance, then give artificial respiration, preferably mouth-to-mouth if possible.</li><li>Call a poison control center or doctor for further treatment advice.</li></ul>
IF IN EYES:	<ul style="list-style-type: none"><li>Hold eye open and rinse slowly and gently with water for 15-20 minutes.</li><li>Remove contact lenses, if present, after the first 5 minutes, then continue rinsing eyes.</li><li>Call a poison control center or doctor for treatment advice.</li></ul>
Have the product container or label with you when calling a poison control center or doctor or going for treatment. For information regarding medical emergencies or pesticide incidents, call the International Poison Center at 1-888-740-8712.	

Manufactured by



7325 Aspen Lane North  
Minneapolis, MN 55428

EPA Reg. No. 1021-1740

EPA Est. No. 1021-MN-2

Net Contents: \_\_\_\_\_

PRECAUTIONARY STATEMENTS  
HAZARDS TO HUMANS AND DOMESTIC ANIMALS

## CAUTION

Harmful if inhaled or absorbed through skin. Avoid contact with skin, eyes, or clothing. Avoid breathing spray mist. Wash thoroughly after handling and before eating, drinking, chewing gum, or using tobacco. Remove and wash contaminated clothing before reuse.

### PERSONAL PROTECTIVE EQUIPMENT (PPE)

All applicator, and other handlers must wear:

- Long-sleeved shirt and long pants,
- Shoes plus socks,
- Chemical-resistant gloves made of waterproof material, and chemical-resistant apron for persons cleaning equipment.

### USER SAFETY REQUIREMENTS

Follow manufacturer's instructions for cleaning/maintaining PPE. If no such instructions for washables exist, use detergent and hot water. Keep and wash PPE separately from other laundry. Discard clothing and other absorbent materials that have been drenched or heavily contaminated with this product's concentrate. Do not reuse them.

### USER SAFETY RECOMMENDATIONS

Users should wash hands before eating, drinking, chewing gum, using tobacco or using the toilet.

Users should remove clothing/PPE immediately if pesticide gets inside. Then wash thoroughly and put on clean clothing.

Users should remove PPE immediately after handling this product. Wash the outside of gloves before removing. As soon as possible, wash thoroughly and change into clean clothing.

### ENVIRONMENTAL HAZARDS

This pesticide is extremely toxic to aquatic organisms, including fish and invertebrates. To protect the environment, do not allow pesticide to enter or runoff into storm drains, drainage ditches, gutters or surface waters. Applying this product in calm weather when rain is not predicted for the next 24 hours will help to ensure that wind or rain does not blow or wash pesticide off the treatment area.

This pesticide is highly toxic to bees exposed to direct treatment on blooming crops or weeds. Do not apply this product or allow it to drift to blooming crops or weeds while bees are foraging in the treatment area.

### DIRECTIONS FOR USE

It is a violation of Federal law to use this product in a manner inconsistent with its labeling.

READ ENTIRE LABEL BEFORE EACH USE.

FOR PET USE. USE ONLY ON DOGS.

#### USE RESTRICTIONS:

Precautions and Restrictions:

Entry Restrictions:

Except when applying as a fabric treatment or to dogs or livestock, do not enter or allow others to enter treated area until sprays have dried.

Application Restrictions

Except when applying to dogs or livestock, do not apply this product in a way that will contact workers or other persons, either directly or through drift.

Except when applying to dogs or livestock, only protected handlers may be in the area during application.

Do not breathe dust, vapors, or spray mist.

Do not apply when food is present.

In the home, all food processing surfaces and utensils should be covered during treatment or thoroughly washed before use. Exposed food should be covered or removed.

Not for broadcast use on indoor residential surfaces.

All outdoor applications must be limited to spot or crack and crevice treatments only, except for the following permitted uses:

- (1) Treatment to soil or vegetation around structures;
- (2) Application to lawns, turf, and other vegetation.

Other than applications to building foundations, all outdoor applications to impervious surfaces such as sidewalks, driveways, patios, porches and structural surfaces (such as windows, doors and eaves) are limited to spot and crack and crevice applications, only.

Do not water the treated area to the point of runoff.

Do not make applications during rain.

Application is prohibited directly into sewers or drains, or to any area like a gutter where drainage to sewers, storm drains, water bodies, or aquatic habitat can occur. Do not allow the product to enter any drain during or after application.

Do not use in aircraft cabins.

Not for use in outdoor residential misting systems.

Affix trigger, pump or other type sprayer to container for application. Do not transfer to another container.

SHAKE WELL BEFORE USING.

Avoid contamination of feed and foodstuffs. Remove pets and birds and cover fish aquariums before surface applications. Do not use on humans. Do not allow children or pets to contact treated areas until surfaces are dry.

Do not use in commercial food/feed handling establishments, restaurants or other commercial facilities where food is commercially prepared, processed, or served. Do not use in institutions, schools, office buildings or similar commercial buildings.

#### INDOOR APPLICATION:

For spot application only. Do not use as a space spray indoors.

#### SURFACE SPRAYING:

For 60-day (two months) control of ASIAN LADY BEETLES, BOXELDER BUGS, BROWN MARMORATED STINK BUGS, STINK BUGS, COCKROACHES, WATERBUGS, PALMETTO BUGS, SCORPIONS, MILLIPEDES, CENTIPEDES, SOWBUGS, PILLBUGS, ANTS, SILVERFISH, FIREBRATS, SPIDERS, CRICKETS, CLOVER MITES, CHEESE MITES, GRANARY WEEVILS, RICE WEEVILS, CONFUSED FLOUR BEETLES, RUST RED FLOUR BEETLES, DRUGSTORE BEETLES, MEALWORMS, GRAIN MITES AND CADELLES: Direct the spray into hiding places, cracks and crevices, and behind shelves and drawers. For Silverfish, spray bookcases. For Ants, spray trails, nests and points of entry.

TO CONTROL CARPET BEETLES: Spray edges of carpeting and under carpeting and rugs. Make localized application to floor and baseboards. Spray directly into cracks, crevices and infested areas of shelving.

TO CONTROL BED BUGS: Spray mattresses lightly, particularly around tufts and seams. Take beds apart and spray in all joints. Allow to dry thoroughly before remaking bed. Treat baseboards, moldings and floors.

TO CONTROL FLEAS (ADULTS AND LARVAE) AND TICKS, INCLUDING TICKS WHICH MAY CARRY LYME DISEASE (ADULTS AND LARVAE): Thoroughly spray infested areas, pet beds, resting quarters, nearby cracks and crevices, along and behind baseboards, moldings, window and door frames, and entire areas of floors and floor coverings. In residential areas, apply as a spot treatment only to floors and floor coverings. Fresh bedding should be placed in animal quarters following treatment. Repeat treatment every 35 days as needed. Allow to dry thoroughly before allowing pets to contact treated areas. To control the source of flea infestations, treat your pet with a product registered for animal application. Also, treat your yard with a product registered for yard application.

TO CONTROL CLOTHES MOTHS: Remove any infested articles from storage, brush thoroughly and air for several hours in sunlight if possible. Apply spray liberally to empty chests, closets, bureaus and other storages directing the spray into cracks, joints and crevices. After airing, infested articles may be treated lightly keeping nozzle at least three feet from fabric to avoid staining.

TO KILL LICE AND LOUSE EGGS: Spray in an inconspicuous area to test for possible staining or discoloration. Inspect again after drying then proceed to spray entire area to be treated. Spray from a distance of 8 to 10 inches. Treat only those garments and parts of bedding including mattresses and furniture that cannot be either laundered or dry-cleaned. Allow all treated articles to dry thoroughly before use.

#### ON LIVESTOCK:

TO PROTECT CATTLE (BEEF AND DAIRY), GOATS, SHEEP, HOGS AND HORSES FROM HORN FLIES, FACE FLIES, HOUSE FLIES, MOSQUITOES AND GNATS: Apply a light mist sufficient to wet the surface of the hair. For Face Flies, spray face and head but do not spray into eyes.

TO CONTROL STABLE FLIES, HORSE FLIES AND DEER FLIES: Apply at a rate of 2 ounces per adult animal sufficient to wet the hair thoroughly. Repeat treatment daily or at intervals necessary to give continued protection.

TO CONTROL BLOOD SUCKING LICE: Apply a light mist sufficient to wet the infested areas of the animal using a stiff brush to get the spray to the base of the hair. Repeat every 3 weeks if required.

TO CONTROL POULTRY LICE: Spray roosts, walls and nests or cages thoroughly, followed by spraying over the birds with a fine mist.

TO CONTROL BED BUGS AND MITES IN POULTRY HOUSES: Spray crevices of roost poles, cracks in walls and cracks in nests where the bed bugs and mites hide.

#### ON DOGS:

Consult a veterinarian before using this product on debilitated, medicated, aged, pregnant or nursing animals. Sensitivities may occur after using ANY pesticide product for pets. If signs of sensitivity occur bathe your pet with mild soap and rinse with large amounts of water. If signs continue, consult a veterinarian immediately.

TO CONTROL FLEAS, TICKS AND LICE: Start spraying at the tail moving the dispenser rapidly and making sure that the animal's entire body is covered including the legs and under body. While spraying, fluff the hair so that the spray will penetrate to the skin. Make sure spray wets thoroughly but do not saturate animal. Do not spray into eyes or face. Avoid contact with genitalia. Use protective gloves or mitts when applying product. Repeat every 35 days as necessary for control.

NOTE: Not recommended for use on puppies less than 12 weeks old. DO NOT USE ON CATS OR KITTENS.

#### USE INSTRUCTIONS FOR CLOTHING TREATMENT:

For protection against Ticks (including those which may carry Lyme disease), chiggers and mosquitoes, apply product as directed below. For further protection, use in conjunction with an insect repellent registered for direct application to the skin and utilize the following primary preventive measures. Avoid areas where the pests are found, wear appropriate protective clothing (light-colored, long-sleeved shirt and long pants tucked into socks) and inspect body daily for ticks. Pant cuffs should be worn inside the socks or footwear to ensure full protection against ticks and chiggers.

#### INITIAL TREATMENT INSTRUCTIONS:

1. Select a well-ventilated outdoor area protected from wind and lay out the clothing to be treated (as complete outfit; shirt, trousers and socks).
2. Spray about 6 to 8 inches from surface of the [article or] clothing and spray with a slow sweeping motion to lightly moisten the surface of the fabric.
3. Continue spraying over entire [article or] outfit, until the outer surface of the fabric is moist enough to cause a slight color change or darkening. Pay special attention to socks, trouser cuffs and shirt cuffs.
4. Turn the [article or] clothing over and treat the other side as described in steps 2 & 3.
5. Hang the treated [article or] clothing and allow to dry for at least 2 hours (4 hours under humid conditions) before wearing.

#### RETREATMENT INSTRUCTIONS:

This product contains an active ingredient which actually binds to the fabric being treated, providing residual protection which lasts a minimum of six weeks, and holds up through several machine washings. **DO NOT RETREAT CLOTHING MORE THAN ONCE EVERY SIX WEEKS. LAUNDER CLOTHING AT LEAST ONCE BEFORE RETREATING.** For retreatment, follow instructions for initial treatment.

#### INITIAL TREATMENT INSTRUCTIONS ON NETS, TENTS, SLEEPING BAGS AND BACKPACKS:

**Do not treat inside of sleeping bag. Spray exterior surfaces of tent only.**

Select a well-ventilated outdoor area protected from wind and lay out article to be treated. Spray about 6 to 8 inches from surface of the article and spray with a slow sweeping motion to lightly moisten the surface of the fabric. Continue spraying over entire article, until the outer surface of the article is moist enough to cause a light color change or darkening. Turn the article over and treat the other side as described in steps 2 and 3. Hang the treated article and allow to dry for at least 2 hours (4 hours under humid conditions) before using.

#### RETREATMENT INSTRUCTIONS:

This product contains an active ingredient that actually binds to the fabric being treated, providing residual protection that lasts a minimum of six weeks. **DO NOT RETREAT ARTICLES MORE THAN ONCE EVERY SIX WEEKS.** For retreatment, follow instructions for initial treatment

#### OUTDOOR APPLICATION:

TO CONTROL TICKS INCLUDING TICKS WHICH MAY CARRY LYME DISEASE AND OTHER LISTED CRAWLING INSECTS (PERIMETER TREATMENT): Use EVERCIDE® PERMETHRIN Multi-Purpose Spray 27781 as a residual treatment to control TICKS including the DEER TICK (*Ixodes dammini*), LONE STAR TICK (*Amblyomma americanum*), BROWN DOG TICK (*Rhipicephalus sanguineus*), AMERICAN DOG TICK (*Dermacentor variabilis*), and WESTERN BLACKLEGGED TICK (*Ixodes pacificus*) and other listed crawling insects such as ASIAN LADY BEETLES, BOXELDER BUGS, BROWN MARMORATED STINK BUGS (BMSB) AND STINK BUGS: For each areas listed below, apply until surface is wet, but not to the point of runoff (approximately 1 gal/750-1,000 ft.).

Treat around windows and doors, porches, screens, eaves, patios, garages, under stairways and in crawl spaces where these pests may enter.

Treat a band of vegetation and leaf litter 6 to 10 feet wide around and the outside of buildings to help control ticks occurring there. To help control ticks in outdoor activity areas, treat a band of vegetation and leaf litter 6 to 10 feet wide and adjacent to activity areas, especially where dense vegetation occurs.

## **STORAGE AND DISPOSAL**

Do not contaminate water, food, or feed by storage and disposal.

#### PESTICIDE STORAGE

Store in a cool, dry area. Always store pesticides in the original container. Store away from food and pet food.

#### PESTICIDE DISPOSAL AND CONTAINER HANDLING

Non-refillable container. Do not reuse or refill this container.

If empty:

Place in trash or offer for recycling if available.

If partly filled:

Call your local solid waste agency for disposal instructions. Never place unused product down any indoor or outdoor drain.

[Optional storage and disposal for containers larger than 5 gallon capacity:]

## STORAGE AND DISPOSAL

Do not contaminate water, food or feed by storage and disposal.

PESTICIDE STORAGE: Store in a cool, dry place. Keep container closed.

PESTICIDE DISPOSAL: Wastes resulting from the use of this product may be disposed of on site or at an approved waste disposal facility.

### CONTAINER HANDLING & DISPOSAL:

[For non-refillable containers:]

Non-refillable container. Do not reuse or refill this container. Empty the remaining contents into the application equipment or a mix tank. Fill the container ¼ full with water. Replace and tighten closures. Tip container on its side and roll it back and forth, ensuring at least one complete revolution, for 30 seconds. Stand the container on its end and tip it back and forth several times. Turn the container over onto its other end and tip it back and forth several times. Empty the rinsate into application equipment or a mix tank or store rinsate for later use or disposal. Repeat this procedure two more times. Offer for recycling if available or reconditioning if appropriate, or puncture and dispose of in a sanitary landfill, or by other procedures approved by state and local authorities.

[For Refillable containers:]

Refillable container. Refill this container with pesticide only. Do not reuse this container for any other purpose. Cleaning before refilling is the responsibility of the refiller. To clean the container before final disposal, empty the remaining contents from this container into application equipment or mix tank. Fill the container about 10 percent full with water. Agitate vigorously or recirculate water with the pump for 2 minutes. Pour or pump rinsate into rinsate collection system. Repeat his rinsing procedure two more times. Offer for recycling if available or reconditioning if appropriate, or puncture and dispose of in a sanitary landfill, or by other procedures approved by state and local authorities.