

PM 3

1021-1688

2/3/98

1/2

2705-897

MGK [®] **McLAUGHLIN MULTICIDE** Mosquito Adulticiding Concentrate 2705
GORMLEY KING COMPANY

Contains An Oil Soluble Synergized Synthetic Pyrethroid For Control of Adult Mosquitoes (Including Organophosphate-Resistant Species) Outdoor Residential and Recreational Areas:

8810 Tenth Avenue N. / Minneapolis, Minnesota 55427-4372 U.S.A.

TELEPHONE (612) 544-0341

ACTIVE INGREDIENTS:

3-Phenoxybenzyl-(1RS, 3RS; 1RS, 3SR)-2,2-dimethyl-3-(2-methylprop-1-enyl) cyclopropanecarboxylate

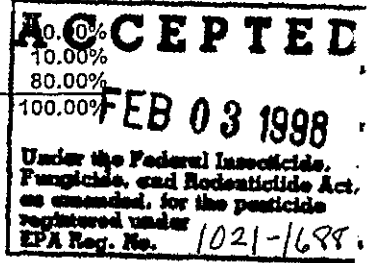
* Piperonyl Butoxide, Technical.....

** **INERT INGREDIENTS**.....

* Equivalent to 8.00% (butylcarbityl) (6-propylpiperonyl) ether and 2.00% related compounds
 ** Contains a petroleum distillate

Contains 0.74 lbs. Technical SUMITHRIN™/Gallon and 0.74 lbs. Technical Piperonyl Butoxide/Gallon

MULTICIDE® - Registered trademark of McLaughlin Gormley King Co.
 SUMITHRIN™ - Trademark of Sumitomo Chemical Company, Ltd.



KEEP OUT OF REACH OF CHILDREN

CAUTION

PRECAUCION AL USUARIO: Si usted no lee Ingles, no use este producto hasta que la etiqueta haya sido explicado ampliamente

STATEMENT OF PRACTICAL TREATMENT

- IF SWALLOWED: Call a physician or Poison Control Center immediately. Do not induce vomiting because of aspiration pneumonia hazard.
- IF IN EYES: Flush eyes with plenty of water. Call a physician if irritation persists.
- IF ON SKIN OR CLOTHING: Remove contaminated clothing and wash before reuse. Wash skin with soap and warm water. Get medical attention if irritation persists.
- IF INHALED: Remove victim to fresh air. If not breathing, give artificial respiration, preferably mouth to mouth.

PRECAUTIONARY STATEMENTS

HAZARDS TO HUMANS AND DOMESTIC ANIMALS

Harmful if absorbed through the skin. Do not induce vomiting because of aspiration pneumonia hazard. Avoid contact with skin, eyes or clothing. In case of contact, flush with plenty of water. Wash with soap and water after use. Obtain medical attention if irritation persists. Avoid contamination of food and feedstuffs.

ENVIRONMENTAL HAZARDS

Do not contaminate untreated water by cleaning of equipment. Cleaning of equipment or disposal of wastes must be done in a manner that avoids contamination of bodies of water or wetlands. For terrestrial uses, do not apply directly to water, or to areas where surface water is present or to intertidal areas below the mean high water mark.

PHYSICAL OR CHEMICAL HAZARDS

Do not use or store near heat or open flame.

DIRECTIONS FOR USE

It is a violation of Federal Law to use this product in a manner inconsistent with its labeling.

IN CALIFORNIA: This product is to be applied by County Health Department, State Department of Health Services, Mosquito and Vector Control or Mosquito Abatement District personnel only.

USE AREAS: For use in mosquito adulticiding programs involving outdoor residential and recreational areas where adult mosquitoes are present in annoying numbers in vegetation surrounding parks, woodlands, swamps, marshes, overgrown areas and golf courses.

For best results, apply when mosquitoes are most active and weather conditions are conducive to keeping the fog close to the ground, i.e. cool temperatures and wind speed not greater than 10 mph.

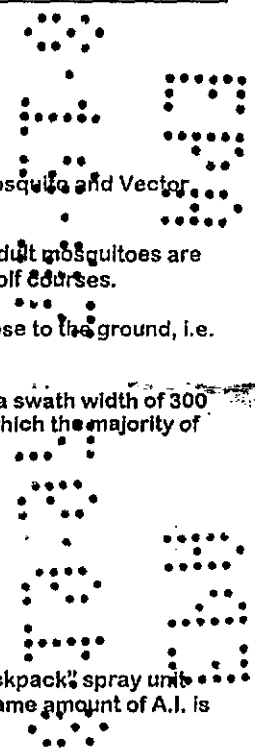
APPLICATION AND DILUTION DIRECTIONS: Consult the following table for examples of various dosage rates using a swath width of 300 feet for acreage calculations. This product should be used in cold aerosol generators capable of producing a fog in which the majority of droplets are in the 5 to 25 micron range.

Dosage Rate lb A.I./acre	Flow Rates in fluid oz./minute at truck speeds of:			
	5MPH	10MPH	15MPH	20MPH
0.0036	1.9 oz	3.8 oz	5.7 oz	7.6 oz
0.0024	1.3 oz	2.5 oz	3.8 oz	5.1 oz
0.0012	0.6 oz	1.3 oz	1.9 oz	2.5 oz

MULTICIDE® Mosquito Adulticiding Concentrate 2705 may be applied undiluted with a non-thermal ULV portable "backpack" spray unit capable of delivering particles in the 5 to 25 micron range. Apply at a walking speed of 2 mph, making sure that the same amount of A.I. is applied per acre.

MULTICIDE® Mosquito Adulticiding Concentrate 2705 may be applied with suitable thermal fogging equipment. Do not exceed the maximum rates listed above. May be applied at speeds of 5 to 20 mph.

Prohibition on aerial use: Not for aerial application in Florida unless specifically authorized by the Bureau of Entomology, Florida Department of Agriculture and Consumer Services.



2/7

The use of specially designed aircraft capable of applying Ultra Low Volumes at above recommended rates may be considered necessary when conducted at the discretion of Public Health Officials, Mosquito Abatement Districts and other trained personnel engaged in outdoor mosquito and biting fly control programs when these insects threaten to become a public health hazard.

Note: MULTICIDE® Mosquito Adulticiding Concentrate 2705 can not be diluted in water. Dilute this product with light mineral oil if dilution is preferred.

STORAGE AND DISPOSAL

Do not contaminate water, food, or feed by storage or disposal.

STORAGE: Store in a cool, dry place. Keep container closed.

CONTAINER DISPOSAL: Triple rinse (or equivalent) and offer for recycling or reconditioning, or puncture and dispose of in a sanitary landfill or by other approved State and Local procedures.

PESTICIDE DISPOSAL: Wastes resulting from the use of this product may be disposed of on site or at an approved waste disposal facility.

Net Contents _____
Mc LAUGHLIN GORMLEY KING COMPANY
8810 Tenth Avenue North
Minneapolis, MN 55427
Made in U.S.A.

EPA Reg. No. 1021-1688

EPA Est. No. 1021-MN-2

