

M cLAUGHLIN
G ORMLEY
K ING

Company



Synergized Industrial Aerosol
 From
 MGK ESBIOL[®] Intermediate 1

INDUSTRIAL USE ONLY

ACCEPTED
 OCT 1 1980
 U.S. for the Federal Insecticide
 Fungicide, and Rodenticide Act
 as amended, for the pesticide
 registered under
 EPA Reg. No. 1021-1421

For Use in the Home, and Non-Food and Food Areas of:
 Food Processing Plants, Schools, Warehouses,
 Office Buildings, Theatres, Garages,
 Motels, Hotels, Kennels,
 and Hospitals.

ACTIVE INGREDIENTS:

*d-trans-Chrysanthemum monocarboxylic acid ester of d-2-allyl-4-hydroxy-3-methyl-2-cyclopenten-1-one	0.186%
*Other isomers	0.014%
**Piperonyl butoxide, technical	0.900%
†N-Octyl bicycloheptene dicarboximide	0.500%
Petroleum distillate	8.400%
INERT INGREDIENTS:	90.000%
	100.000%

- *S-bioallethrin from ESBIOL[®]
- **Equivalent to .72% (butylcarbityl)(6-propylpiperonyl)
ether and .18% related compounds
- †MGK 264, Insecticide Synergist

ESBIOL[®] - Registered Trademark of Roussel-Uclaf; Paris, France.

KEEP OUT OF REACH OF CHILDREN
CAUTION
 See Back Panel for Additional Precautionary Statements

Kills Common Pests:

Houseflies, Mosquitoes, Cockroaches,
 and others listed on back panel.

Net Weight 16 Ounces

Packed For:

MC LAUGHLIN GORMLEY KING COMPANY
 8810 Tenth Avenue North
 Minneapolis MN 55427

EPA Reg. No. 1021-1421

EPA Est. No. 1021-MN-1

IDEAL Home products

FOR HOUSEHOLD USE ONLY

**PRECAUTIONARY STATEMENTS
HAZARDS TO HUMANS AND
DOMESTIC ANIMALS**

CAUTION: Harmful if swallowed or absorbed through skin. Avoid breathing vapors. Avoid contact with skin. In case of contact, immediately wash skin with plenty of water.

Do not use in commercial food processing areas, food storage and serving areas. In the home, all food processing surfaces, exposed food products, should be covered during treatment, or thoroughly washed before use.

Remove pets, birds and cover fish aquariums before spraying.

PHYSICAL HAZARDS

Contents under pressure. Do not use or store near heat or open flame. Do not puncture or incinerate container. Exposure to temperatures above 130°F may cause bursting.

DIRECTIONS FOR USE:

GENERAL CLASSIFICATION

It is a violation of Federal law to use this product in a manner inconsistent with its labeling.

STORAGE AND DISPOSAL

Storage: Store in a cool area away from heat or open flame.

Disposal: Do not reuse empty container. Wrap container and put in trash collection.

SHAKE BEFORE USE:

HOLD CONTAINER UPRIGHT.
APPLY IN SHORT BURSTS.

To Kill Flies, Mosquitoes, Small Flying Mites and Gnats: Close all doors and windows and direct spray toward the center of room with a fine, pulsating motion. Spray 5-10 seconds for every 1000 ft. Room must be closed for 15 minutes after spraying. Ventilate room thoroughly before re-entry. Sweep up and destroy remaining insects.

To Kill Cockroaches, Ants and Crickets: Contact as many insects as possible with the Spray in addition to thorough spraying of all parts of the room suspected of harboring these pests.

Special attention should be paid to cracks, hidden surfaces, under walls, behind stoves and refrigerators.

food storage areas and wherever these pests are suspected of hiding. To kill ants, treat floors, ground window frames, air fans and other areas of entry. Repeat as necessary.

To Kill Carpet Beetles: Directly spray as many insects as possible. Spray both interior and exterior of upholstered furniture, both top and bottom of rugs and carpets should be sprayed thoroughly. Also treat shelves, closets, dress, under furniture and wherever these insects are seen or suspected. Repeat as necessary.

To Kill Exposed Forms of Confused Flour Beetles, Saw-toothed Grain Beetles, and Rice Weevils: Find and destroy infested flourage goods. Remove all other items from pantry. Spray the shelves to kill any of the named weevils present. Place clean paper on the shelves and return packages after shelves have dried. Repeat as necessary.

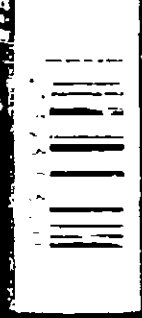
To Kill Sawtoothed Composite, Fleas and Spiders: Contact as many insects as possible with the spray. Also thoroughly spray all parts of the room suspected of harboring these pests. Special attention should be paid to cracks, crevices, hidden surfaces, under walls behind stoves and refrigerators.

To Kill Fleas and Brown Dog Ticks: Remove and destroy all pet bedding. Spray sleeping quarters of pets. Around baseboards, window and door frames, wall cracks and other areas of floors. Repeat as necessary. Do not spray animals. Put fresh bedding in pet quarters after spray has dried. Also treat dogs and cats with a registered flea and tick control product before allowing them to enter treated area.

**CLINIC CHEMICAL,
DAND PRAIRIE,
TEXAS 75050**

**E.P.A. Reg. No.
1169-59
E.P.A. Est. No.
36334-DH-2**

Stock No. 3810



**Fly and
Mosquito
Killer**



Kills Common Household Pests: Mosquitoes, Fleas, Spiders, and others listed on back panel.

ACTIVE INGREDIENTS

1-methyl-2-(1-cyclohexene-1-yl-2-dimethylamino)ethyl 2,2-dimethyl-3-(2-methylprop-1-en-1-yl) cyclopropanecarboxylate	0.200%
1-(2-methylprop-1-en-1-yl)-2,2-dimethyl-3-(2-methylprop-1-en-1-yl) cyclopropanecarboxylate	0.181%
Other inert ingredients	99.619%
TOTAL INGREDIENTS	100.000%

CAUTION:
**KEEP OUT OF
REACH OF CHILDREN**
See other cautions on back panel.

*G-100, 100% effective
**G-100, 100% effective
Mfg. 25% in G-100
Mfr. 75% in G-100

Net Wt. 12 OZ.

340g