



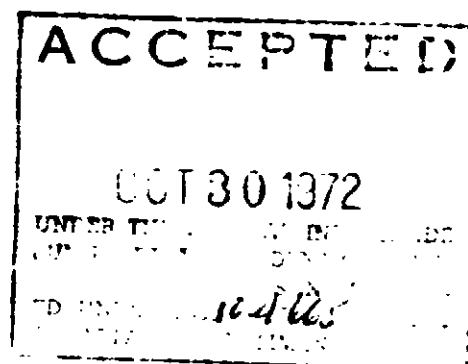
PYROCIDE[®] Aerosol Mix 6157

1715 S.E. Fifth Street - Minneapolis, Minnesota 55414

ACTIVE INGREDIENTS:

Pyrethrins	1.25%
*Piperonyl butoxide, technical	4.00%
Petroleum distillate	5.00%
INERT INGREDIENTS:	89.75%
Total	100.00%

*Consists of 3.2% (butylcarbityl)(6-propylpiperonyl) ether and .8% related compounds.



DIRECTIONS

FOR MANUFACTURING USE ONLY

Pack 20 parts of PYROCIDE AEROSOL MIX 6157 with 80 parts of propellant (50/50 mix of propellents 11 and 12) in an aerosol dispenser to produce an insecticidal product.

CAUTION

KEEP OUT OF REACH OF CHILDREN

Harmful if swallowed. Avoid contamination of food and feedstuffs.

This concentrate is toxic to fish and other aquatic animals. Do not contaminate any body of water with equipment cleaning solutions, spillage or wastage.

Drum may be re-used after thoroughly cleaning.

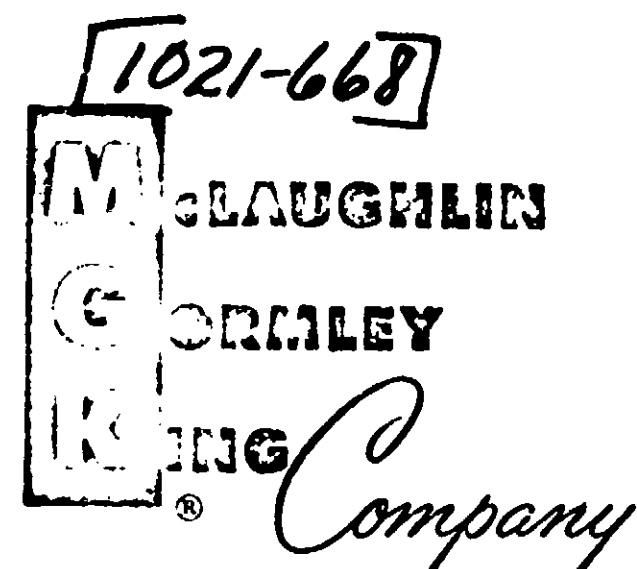
WARNING: FLAMMABLE! KEEP AWAY FROM HEAT OR OPEN FLAME.

Mix well in drum before sampling and each use. Keep container closed. Store in a cool place.

Manufactured by

MC LAUGHLIN GORMLEY KING COMPANY
MINNEAPOLIS, MINN., U.S.A. 55414

EPA Reg. No. 1021-665



PYROCIDE[®] Intermediate 6168

1715 S.E. Fifth Street - Minneapolis, Minnesota 55414

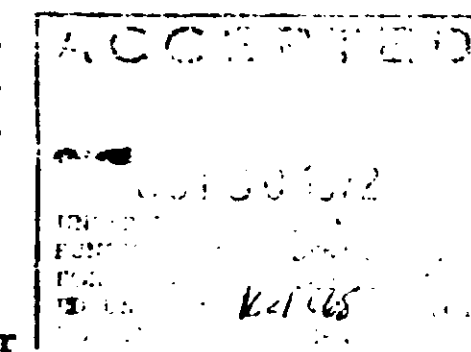
ACTIVE INGREDIENTS:

Pyrethrins	100%	6.0%
*Piperonyl butoxide, technical		12.0%
¹ N-octyl bicycloheptene dicarboximide		20.0%
**2,3:4,5-Bis(2-butylene)tetrahydro-2-furaldehyde		24.0%
Petroleum distillate		38.0%

*Consists of 9.6% (butylcarbityl)(6-propylpiperonyl) ether and 2.4% related compounds.

¹MKG 264, Insecticide Synergist.

**MKG Repellent 11, U.S. Pat. No. 2,610,116.



DIRECTIONS

FOR MANUFACTURING USE ONLY

This Intermediate is designed for dilution 1 part plus 6 with oil to make a spray which would be further diluted (1 + 9) and used on non-dairy or non-meat animals.

CAUTION

KEEP OUT OF REACH OF CHILDREN

Harmful if swallowed. Contact with skin can cause toxic symptoms. Avoid breathing vapors. In case of skin contact wash with soap and water. Avoid contamination of feed and foodstuffs.

This concentrate is toxic to fish and other aquatic animals. Do not contaminate any body of water with equipment cleaning solutions, spillage or wastage.

Do not re-use empty drum. Return to drum reconditioner or destroy by crushing and burying in a safe place.

Mix well in drum before sampling and each use. Keep container closed. Store in a cool place. Do not store, pour or spill near heat or open flame.

Manufactured by

MC LAUGHLIN GORMLEY KING COMPANY
MINNEAPOLIS, MINN., U.S.A. 55414

EPA Reg. No. 1021-668