

# BANZOL

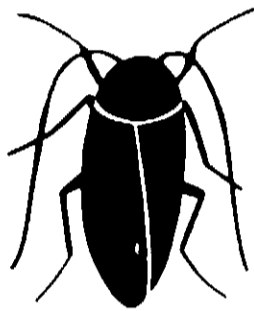
# BANZOL<sup>®</sup>

A ready-to-use formulation for control of cockroaches, ants, crickets, silverfish, spiders and brown dog ticks in and around structures. Also for use out-of-doors as an aid in reducing annoyance from flies and mosquitoes entering premises.

## Industrial & Household Residual Insecticide

(Contains Dursban<sup>®</sup>)

A ready-to-use formulation for control of cockroaches, ants, crickets, silverfish, spiders and brown dog ticks in and around structures. Also for use out-of-doors as an aid in reducing annoyance from flies and mosquitoes entering premises.



### ACTIVE INGREDIENTS

1. Dursban<sup>®</sup> (Deltamethrin) 0.50%

### STATEMENT OF PRACTICAL TREATMENT

Swallowed

Inhaled

See the Panel for Additional Information

Keep Out of Reach of Children

### CAUTION

Manufactured by  
**Superior Chemical Products, Inc.**  
Philadelphia, Pa. 19124

NET CONTENTS 1 GALLON LIQUID 3.785 LITERS

© 1978 Superior Chemical Products, Inc.  
All rights reserved. This product is a registered trademark of Superior Chemical Products, Inc.  
EPA REG. NO. 100-100000  
EPA EST. NO. PA-00124-A

EPA REG. NO. 100-100000

EPA EST. NO. PA-00124-A

# BANZOL

## PRECAUTIONARY STATEMENTS HAZARDS TO HUMANS ( & DOMESTIC ANIMALS )

### CAUTION

Keep out of reach of children

Keep out of reach of children. Do not use in areas accessible to children. Do not use in areas where children play. Do not use in areas where children are likely to be present. Do not use in areas where children are likely to be present.

Keep out of reach of domestic animals. Do not use in areas accessible to domestic animals. Do not use in areas where domestic animals are likely to be present. Do not use in areas where domestic animals are likely to be present.

### Keep out of reach of domestic animals

Keep out of reach of domestic animals. Do not use in areas accessible to domestic animals. Do not use in areas where domestic animals are likely to be present. Do not use in areas where domestic animals are likely to be present.

### Environmental hazards

This product is toxic to fish, birds and other wildlife. Keep out of streams, rivers, lakes, ponds, and other bodies of water. Do not use in areas where birds, fish, or other wildlife are likely to be present. Do not use in areas where birds, fish, or other wildlife are likely to be present.

### Physical or chemical hazards

Do not use in areas where fire or explosion is a hazard. Do not use in areas where fire or explosion is a hazard.

## STORAGE AND DISPOSAL

### Prohibitions

Do not use in areas where fire or explosion is a hazard. Do not use in areas where fire or explosion is a hazard.

### Pesticide disposal

Do not use in areas where fire or explosion is a hazard. Do not use in areas where fire or explosion is a hazard.

### Container disposal

Do not use in areas where fire or explosion is a hazard. Do not use in areas where fire or explosion is a hazard.

### General

# BANZOL

## Industrial & Household Residual Insecticide

### GENERAL INFORMATION

#### General Information

#### Food Handling Establishments

##### Floor Areas

##### Serving Areas

##### Non Food Areas

#### Locations Other Than Food Handling Establishments

Cockroaches, Ants, Crickets, Silverfish, Spiders

Superior Chemical Products, Inc.  
Philadelphia, Pa. 19124

