

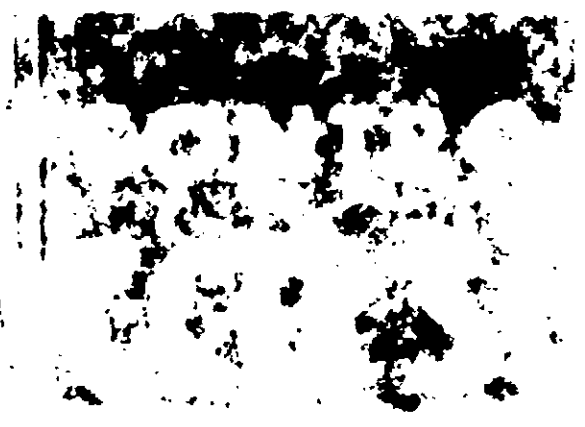
PRECAUTIONS

1. Do not apply to plants that are under stress or have been severely damaged by frost or other factors.
2. Do not apply to plants that are in the bottom of a deep furrow or in a hole dug to the soil surface by animals. If it is necessary to use in such situations, it is suggested to use a little extra water.
3. Do not apply to plants when plants are dry when you are ready to apply, or when plants may be washed off by rain or irrigation. In hot, humid weather, the product is more effective when plants are not close together. Excessive light may cause leaf burn. Do not get on other surfaces than dark brown.
4. A 50-50 TSC 350 emulsion should give satisfactory results, even in hot, dry weather. Under severe conditions, a 25% emulsion is recommended. In the field, it may be diluted to reduce the concentration to 10% by mixing with plain water. Do not apply to plants that are under stress or have been severely damaged by frost or other factors.
5. Do not apply to plants that are under stress or have been severely damaged by frost or other factors.
6. Do not apply to plants that are under stress or have been severely damaged by frost or other factors.



ACCEPTED
 Jan 21, 1972
 U.S. DEPARTMENT OF AGRICULTURE
 PLANT INDUSTRY DIVISION
 WASHINGTON, D.C. 20250
 RECEIVED

ACTIVE
 INERT



PLANT

PRECAUTIONS

1. Do not apply to plants that are under stress or have been severely damaged by frost or other factors.

PRECAUTIONS

2. Do not apply to plants that are in the bottom of a deep furrow or in a hole dug to the soil surface by animals. If it is necessary to use in such situations, it is suggested to use a little extra water.

3. Do not apply to plants when plants are dry when you are ready to apply, or when plants may be washed off by rain or irrigation. In hot, humid weather, the product is more effective when plants are not close together. Excessive light may cause leaf burn. Do not get on other surfaces than dark brown.

4. A 50-50 TSC 350 emulsion should give satisfactory results, even in hot, dry weather. Under severe conditions, a 25% emulsion is recommended. In the field, it may be diluted to reduce the concentration to 10% by mixing with plain water. Do not apply to plants that are under stress or have been severely damaged by frost or other factors.

5. Do not apply to plants that are under stress or have been severely damaged by frost or other factors.

6. Do not apply to plants that are under stress or have been severely damaged by frost or other factors.

7. Do not apply to plants that are under stress or have been severely damaged by frost or other factors.

8. Do not apply to plants that are under stress or have been severely damaged by frost or other factors.