

961-392

8/27/2009

10f9



UNITED STATES ENVIRONMENTAL PROTECTION AGENCY
WASHINGTON, D.C. 20460

OFFICE OF
PREVENTION, PESTICIDES AND
TOXIC SUBSTANCES

Mrs. Jeanette A. Covert
Authorized Representative for Lebanon
Lebanon Seaboard Corporation
1600 East Cumberland Street
Lebanon, PA 17042

AUG 27 2009


RE: Notification to revise Warranty Statement
EPA Registration Number: 961-392
Date of Submission: July 22, 2009

Dear Mrs. Covert:

The Agency is in receipt of your Application for Pesticide Notification under Pesticide Registration Notice (PRN) 98-10 and dated July 22, 2009, for the above mentioned product. The Registration Division (RD) has conducted a review of this request for its applicability under PRN 98-10 and finds that the actions requested fall within the scope of PRN 98-10. The label submitted with the application has been stamped "Notification" received and will be placed in our records.

If you have any questions, please call me directly at 703-305-6249 or Joyce Edwards of my staff at 703-308-5479.

Sincerely,


Linda Arrington
Notifications & Minor Formulations Team Leader
Registration Division (7505P)
Office of Pesticide Programs

40f9

GREENVIEW® GREEN POWER® CRABGRASS PREVENTION AND CONTROL

ACTIVE INGREDIENT:

Dithiopyr[±] 0.13%

OTHER INGREDIENTS: 99.87%

TOTAL 100.00%

EPA Reg. No. 961-392

Product protected by U.S. Patent No. 4,692,184. Other patents pending.

[±]CAS. No. 97886-45-8

(L) (D)

EPA Est. No. 961-PA-01:961-IL-01

Superscript used is first letter of lot number.

READ THE ENTIRE LABEL BEFORE USING THIS PRODUCT.

USE ONLY ACCORDING TO LABEL INSTRUCTIONS.

If terms are not acceptable, return the unopened container at once.

In the State of New York, do not exceed 4.4 lbs. product per 1000 sq. ft. (0.25 lb. active ingredient per acre) per year.
Do not apply more than once per year to the same area.

KEEP OUT OF REACH OF CHILDREN

CAUTION

See Back Panel for Additional Precautionary Statements.

GUARANTEED ANALYSIS

Total Nitrogen (N) XX%

X.X% Ammoniacal Nitrogen

X.X% Water Insoluble Nitrogen

X.X% Urea Nitrogen

X.X% Other Water Soluble Nitrogen

Available Phosphate (P₂O₅) XX%

Soluble Potash (K₂O) XX%

Nutrient Sources: (Guaranteed Analysis and Nutrient Sources to be supplied based on fertilizer analysis used by manufacturer.)

MANUFACTURED BY:

LEBANON SEABOARD CORPORATION

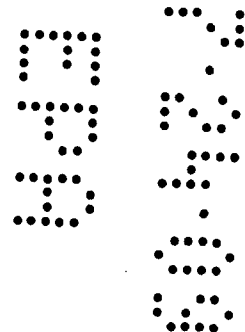
1600 EAST CUMBERLAND STREET

LEBANON, PA 17042

www.lebsea.com

NET WEIGHT: XX LBS. (X.X kg)

COVERS: X,XXX Sq. Ft.



50f9

PRECAUTIONARY STATEMENTS HAZARDS TO HUMANS AND DOMESTIC ANIMALS CAUTION

Causes eye irritation. Harmful if inhaled. Avoid contact with eyes or clothing. Avoid breathing dust. Wash thoroughly with soap and water after handling. Remove contaminated clothing and wash before reuse. Prolonged or frequently repeated skin contact while handling this material may cause allergic reaction in some individuals.

FIRST AID

- IF IN EYES:**
- Hold eye open and rinse slowly and gently with water for 15-20 minutes. Remove contact lenses, if present, after the first 5 minutes, then continue rinsing eye.
 - Call a poison control center or doctor for treatment advice.
- IF INHALED:**
- Move person to fresh air.
 - If person is not breathing, call 911 or an ambulance, then give artificial respiration, preferably by mouth-to-mouth if possible.
 - Call a poison control center or doctor for further treatment advice.

Have the product container or label with you when calling a poison control center or doctor, or going for treatment. In case of an emergency involving this product, call day or night (800) 424-9300.

ENVIRONMENTAL HAZARDS

This product is toxic to fish and highly toxic to other aquatic organisms including oysters and shrimp. Use with care when applying to turf areas adjacent to any body of water. Drift and runoff from treated turf may adversely affect aquatic organisms in adjacent aquatic sites. Do not apply directly to water, or to areas where surface water is present, or to intertidal areas below the mean high water mark. Do not apply when weather conditions favor drift from treated areas. Do not contaminate water when disposing of equipment washwaters.

DIRECTIONS FOR USE

It is a violation of Federal law to use this product in any manner inconsistent with its labeling.

GENERAL INFORMATION FOR TURF USE

This product contains Dimension®, a herbicide that can be applied up to 4 weeks later than other crabgrass preventers and still provides season-long control. Greenview Green Power Crabgrass Prevention and Control prevents crabgrass and other grass and broadleaf weeds up to 4 months, when applied prior to their germination in lawns and ornamental turfgrasses. It also provides postemergence control of seedling crabgrass for up to 4 weeks after it germinates. Greenview Green Power Crabgrass Prevention and Control should be applied to lawns and ornamental turfgrasses that are well established (See "General Precautions and Restrictions" section below for a list of the tolerant turfgrasses). It will not harm nearby established ornamentals when used according to directions, given below.

GENERAL PRECAUTIONS AND RESTRICTIONS

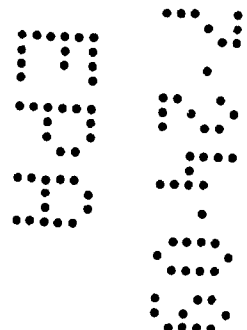
NOT FOR USE ON TURF BEING GROWN FOR SALE OR OTHER COMMERCIAL USE AS SOD, OR FOR COMMERCIAL SEED PRODUCTION, OR FOR RESEARCH PURPOSES.

Not for use on newly seeded lawns. Use Preen New Lawn Crabgrass Preventer Plus Seed Starter Fertilizer instead.

Use of Greenview Green Power Crabgrass Prevention and Control on lawns and ornamental turfgrasses that are not well established, or have been weakened by stress due to mechanical operations, pests, excessive temperatures, or lack of moisture may increase the chances for turfgrass injury. Do not apply to lawns or turfgrasses that are under stress.

Reseeding, overseeding, or sprigging of turfgrasses into areas that have been previously treated with this product should be delayed until after 8 weeks from the time of application. Reseeding, overseeding, or sprigging before 8 weeks or earlier after application may injure or prevent the establishment of the newly reseeded, overseeded or sprigged turfgrasses.

Do not make an application of this product later than 4 weeks after crabgrass germination. Do not expect control with applications made later than 4 weeks after crabgrass germination.



609

DO NOT apply more than 8.8 lbs. of this product per 1,000 sq. ft. per application, and no more than 26.4 lbs. of this product per 1000 sq. ft. per year.
In the State of New York, do not exceed 4.4 lbs. product per 1000 sq. ft. (0.25 lb. active ingredient per acre) per year.
 DO NOT use clippings from treated turf for mulching, vegetables, vines, or fruit trees from which feed or food products may be harvested.
 Keep people and pets off treated areas until dust has settled.

WEEDS CONTROLLED AND/OR SUPPRESSED

Grass Weeds - Annual Bluegrass, Annual Ryegrass, Barnyardgrass, Crabgrass, Crowfootgrass, Goosegrass, Green Foxtail, Kikuyugrass (seedling), Perennial Ryegrass, Smutgrass (seedling), Yellow Foxtail.

Broadleaf Weeds - Bittercress, Buttercup Oxalis, Carolina Geranium, Chickweed, Common Lespedeza, Common Purslane, Corn Speedwell, Creeping Oxalis, Henbit, Parsley-piert, Pineappleweed, Prostrate Spurge, Spotted Spurge, Yellow Woodsorrel.

APPLICATION DIRECTIONS

Greenview Green Power Crabgrass Prevention and Control can be applied to the following turfgrasses when used as directed:

Cool-Season Turfgrasses - Creeping Bentgrass, Fine Fescues, Kentucky Bluegrass, Perennial Ryegrass, Tall Fescues.

Warm-Season Turfgrasses - Bahiagrass, Bermudagrass, Buffalograss, Carpetgrass, Centipedegrass, St. Augustinegrass, Zoysiagrass.

APPLICATION TIMING

Greenview Green Power Crabgrass Prevention and Control should be applied in the spring or in the fall prior to weed seed germination for control of weeds in established lawns and ornamental turfgrasses. When this product is applied in the fall, a sequential or second application must be made the following spring to provide season-long control of weeds. If this product is applied in the fall, DO NOT reseed, overseed or sprig turfgrasses before 12 weeks after application due to potential turfgrass injury to the newly reseeded, overseeded or sprigged turfgrasses.

When establishing a new lawn of Kentucky Bluegrass, Perennial Ryegrass and/or Tall Fescue, this product may be applied 2 weeks after the first sign of grass germination. For other turfgrass, wait until the grass is well established (2 mowings) before applying this product. Do not apply this product within an 8 week period prior to seeding, reseeding, overseeding or sprigging.

Improved weed control may occur when this product is applied within a few days after mowing and further mowing is delayed until the turfgrass has been watered or received rainfall to dissolve the fertilizer granules.

Length of Control -

Greenview Green Power Crabgrass Prevention and Control will provide up to **4 months** of weed control if applied according to label directions. The actual length of control will vary depending on use rate, weather conditions, condition of the turfgrass, and intensity of weed pressure.

POST EMERGENCE CRABGRASS CONTROL

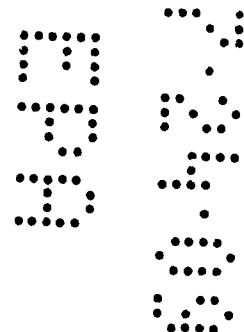
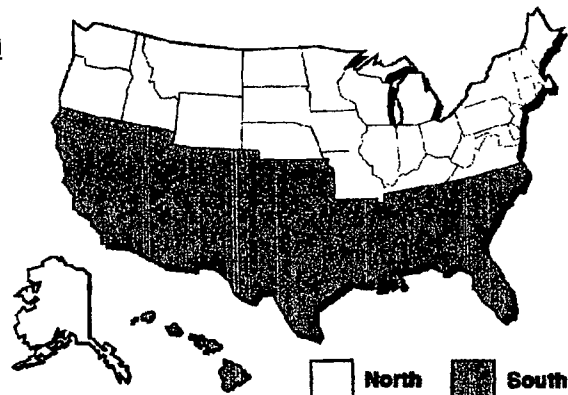
For post emergent crabgrass control, apply Greenview Green Power Crabgrass Prevention and Control when crabgrass is small (3-4 leaf). It will not control large tillered crabgrass.

**RECOMMENDED USE RATE TABLE
(LBS. PER 1,000 SQ. FT.)**

| REGION | 2-3 Months Control | 3-4 Months Control | Early Post Emergence Control |
|---------------|-------------------------------|-------------------------------|---|
| North | 2.2 | 3.1 | 3.9 - 8.8 |
| South | 3.4 | 3.9 - 4.5 | 3.9 - 8.8 |

* Use the higher rate in areas of high weed pressure

USE REGIONS WITHIN THE UNITED STATES



7099

APPLICATION EQUIPMENT AND INSTRUCTIONS

Greenview Green Power Crabgrass Prevention and Control can be applied with a drop or rotary type spreader designed to apply granular fertilizers. For best results, apply this product evenly and uniformly over the turfgrass area, avoiding streaking, skips or overlaps. Avoid the use of spreaders that would apply this product in narrow rows or concentrated bands. Before each application, calibrate the spreader according to the equipment manufacturer's directions. Adjust the spreader settings so the spreader delivers the appropriate application rate as recommended above.

A more uniform application can be made by spreading one-half of the recommended amount of this product over the turfgrass area and then applying the remaining one-half at a right angle to the previous direction. Check spreader frequently to insure it is functioning properly and distributing the granules uniformly.

Drop Spreader Settings

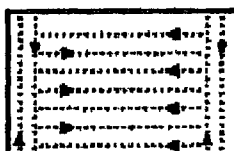
Option 1 (for 22 lb. bag covering 5,000 sq. ft.):

Apply in a single pass at a rate of approximately 4.4 lbs. per 1,000 sq. ft. Start on the outside border and apply in a circular path working toward the center. Overlap the coverage slightly, and shut off spreader before making hard turns.

Option 2 (for 17 lb. bag covering 5,000 sq. ft.):

Apply in a single pass at a rate of 3.4 lbs. per 1,000 sq. ft. Start on the outside border and apply in a rectangular path working back and forth across the length of the lawn. Overlap the coverage slightly, and shut off spreader before making hard turns.

| Drop Spreader | Setting |
|----------------------------|---------|
| Greenview® Drop Spred® XP1 | 16½ |
| Greenview® Drop Spred® III | 7 |
| Agri-Fab® Drop | 5 |
| Red Devil Drop (1-20) | 10½ |
| Republic Drop | 6½ |
| Scotts Drop PF | 9 |



Graphic Optional

Broadcast Spreader Settings

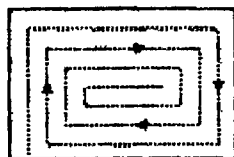
Option 1 (for 22 lb. bag covering 5,000 sq. ft.):

Apply in a single pass at a rate of approximately 4.4 lbs. per 1000 sq. ft. Start on the outside border and apply in a circular path working toward the center. A little overlap coverage is desirable.

Option 2 (for 17 lb. bag covering 5,000 sq. ft.):

Apply in a single pass at a rate of 3.4 lbs. per 1,000 sq. ft. Start on the outside border and apply in a circular path working toward the center. Overlap the coverage slightly, and shut off spreader before making hard turns.

| Broadcast Spreader | Setting |
|---------------------------|---------|
| Greenview® Jet-Spred® SS1 | 17½ |
| Greenview® Jet-Spred® III | 5 |
| Agri-Fab® Rotary | 7½ |
| Cyclone Rotary | 5 |
| Earthway Rotary | 18 |
| Lesco Rotary | J |
| Red Devil Rotary (1-20) | 10 |
| Republic Rotary | 5 |
| Sears Craftsman Rotary | 4½ |
| Scotts SpeedyGreen® | 9 |



Graphic Optional

(For 22 lb. bag covering 5,000 sq. ft.) - To calibrate your spreader: 1 lb. of material should cover approximately 227 sq. ft.

(For 17 lb. bag covering 5,000 sq. ft.) - To calibrate your spreader: 1 lb. of material should cover approximately 294 sq. ft.

If your spreader model is not listed (or does not appear above), go to our website at www.lebsea.com (or www.preen.com), or call toll-free 800-233-1067, 8 A.M. - 5 P.M. EDT, Monday - Friday, for additional model settings.

STORAGE AND DISPOSAL

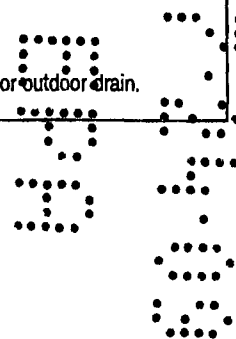
Do not contaminate water, food, or feed by storage or disposal.

PESTICIDE STORAGE: Store product in its original container in a cool, dry, locked place out of the reach of children and animals.

CONTAINER DISPOSAL:

IF EMPTY: Nonrefillable container. Do not reuse or refill this container. Place in trash or offer for recycling if available.

IF PARTLY FILLED: Call your local solid waste agency for disposal instructions. Never place unused product down any indoor or outdoor drain.



809

WARRANTY
IMPORTANT: READ BEFORE USE

Read the entire Directions for Use, Conditions, Disclaimer of Warranties and Limitations of Liability before using this product. If terms are not acceptable, return the unopened product container at once.

By using this product, user or buyer accepts the following Conditions, Disclaimer of Warranties and Limitations of Liability.

CONDITIONS: The directions for use of this product are believed to be adequate and must be followed carefully. However, it is impossible to eliminate all risks associated with the use of this product. Crop injury, ineffectiveness or other unintended consequences may result because of such factors as weather conditions, presence of other materials, or the manner of use or application, all of which are beyond the control of Lebanon Seaboard Corporation. All such risks shall be assumed by the user or buyer.

DISCLAIMER OF WARRANTIES: To the extent consistent with applicable law, LEBANON SEABOARD CORPORATION MAKES NO OTHER WARRANTIES, EXPRESS OR IMPLIED, OF MERCHANTABILITY OR OF FITNESS FOR A PARTICULAR PURPOSE OR OTHERWISE, THAT EXTEND BEYOND THE STATEMENTS MADE ON THIS LABEL. No agent of Lebanon Seaboard Corporation is authorized to make any warranties beyond those contained herein or to modify the warranties contained herein. To the extent consistent with applicable law, Lebanon Seaboard Corporation DISCLAIMS ANY LIABILITY WHATSOEVER FOR SPECIAL, INCIDENTAL OR CONSEQUENTIAL DAMAGES RESULTING FROM THE USE OR HANDLING OF THIS PRODUCT.

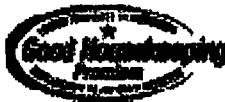
LIMITATIONS OF LIABILITY: To the extent consistent with applicable law, THE EXCLUSIVE REMEDY OF THE USER OR BUYER FOR ANY AND ALL LOSSES, INJURIES OR DAMAGES RESULTING FROM THE USE OR HANDLING OF THIS PRODUCT, WHETHER IN CONTRACT, WARRANTY, TORT, NEGLIGENCE, STRICT LIABILITY OR OTHERWISE, SHALL NOT EXCEED THE PURCHASE PRICE PAID, OR AT LEBANON SEABOARD CORPORATION'S ELECTION, THE REPLACEMENT OF PRODUCT.

Dimension® is a registered trademark of Dow AgroSciences LLC.

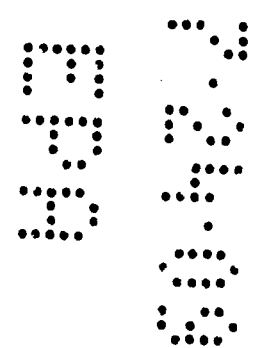
Advertising claims that may be presented on the label

- A Herbicide that Provides Control and Prevention of Crabgrass and Other Grass Type Weeds as well as Listed Broadleaf Weeds in Established Lawns. Apply in Spring.
- A Herbicide Plus Fertilizer Combination Product that Provides Control of Crabgrass and Other Weeds in Established Lawns and Residential Landscapes.
- Premium Granular Fertilizer - Providing the Nutrients Needed for Beautiful Lawns and Ornamental Turfgrasses for Up to X* Months.
 - Thick Well-Fed Grass Provides a Natural Barrier to Further Weed Infestation.
- Can Be Applied Up to 4 Weeks Later Than Other Preemergence Crabgrass Preventers.
 - Only one application needed with new nitrogen technologies.
- Extended time-release feeding of nitrogen greens into summer without excess growth.

Good Housekeeping Seal



- Prevents crabgrass for up to 120 days.
 - X.X* lb. Nitrogen/1,000 sq. ft.
 - X/X* of the Nitrogen is Slow Release
- Prevents crabgrass, foxtail, spurge and many other weeds
- Can be applied up to 4 weeks later than other crabgrass preventers
 - Prevents poa annua with late summer or early fall application



9099

Depending on the product analysis - the following statement may or may not appear under the General Information for Turf Use section:

Greenview Green Power Crabgrass Prevention and Control is a premium quality combination product that provides both weed control and the required nutrients for optimum turfgrass growth - all in a single product.

FAIRWAY FORMULA FERTILIZER

WHAT IS SLOW RELEASE NITROGEN?

Greenview Fairway Formula Fertilizers utilize unique, slow release nitrogen sources developed for professionals.

MESA® Provides rapid, deep greening. Feeds up to 6 weeks.

METH-EX® Slow, continuous feeding activated by warming soil temperatures. Feeds up to 12 weeks.

IBDU® Feeds in cool, wet weather. Great for early spring and winter. Feeds up to 16 weeks.

$XX.X\%$ Slowly Available Nitrogen / $XX\%$ Total Nitrogen = $XX\%$ of the Nitrogen is Slow Release

**number would be determined by fertilizer analysis used by manufacturer.*

GREENVIEW® YARD WIDE GUARANTEE

Greenview guarantees you will be satisfied with the performance of this product when used as directed, or your money back. If not satisfied, describe the nature of your problem, and send with proof of purchase to Lebanon Seaboard Corporation, 1600 East Cumberland Street, Lebanon, PA 17042.

PREEN GUARANTEE

Lebanon Seaboard Corporation guarantees you will be satisfied with the performance of this product when used as directed, or your money back. If not satisfied, describe the nature of your problem, and send with proof of purchase to Lebanon Seaboard Corporation, 1600 East Cumberland Street, Lebanon, PA 17042.

Green Power® and Greenview® are registered trademarks of Lebanon Seaboard Corporation.

Preen® is a registered trademark of Lebanon Seaboard Corporation.

For more information on our complete line of Greenview Lawn and Garden Products, visit our website at www.lebsea.com

Additional Labeling Requirements:

If the fertilizer guarantee contains iron, the following statement must appear:

This product contains the secondary nutrient iron. Iron may stain concrete and should not be applied on dry or water dampened concrete and should be removed from these areas promptly after application by sweeping or blowing. Do not wash off with water.

If the recommended use rate applies less than 1 pound nitrogen per 1,000 sq. ft. per application, the following statement must appear:

Supplemental applications of lawn fertilizer are needed to achieve a minimum 1 pound nitrogen per 1,000 sq. ft.

For products distributed in the State of Washington, the following statement must appear:

Information regarding the contents and levels of metals in this product is available on the Internet at <http://www.regulatory-info-lebsea.com>

