

NET WEIGHT: 48 LBS. (21.78 Kg)

# LEBANON COUNTRY CLUB 19-4-9 WITH BETASAN®

A selective herbicide for preemergence control of crabgrass and annual bluegrass in turf, ornamentals and ground covers

## FOR PROFESSIONAL USE

**ACTIVE INGREDIENT:**

Bensulide: S-(0,0 Diisopropyl phosphorothioate ester of  
N-(2-mercaptoethyl) benzenesulfonamide

3.5%

**INERT INGREDIENTS:**

96.4%

**TOTAL:** 100.0%

Registered TM of ICI Americas, Inc.  
U.S. Patent No. 3,205,253

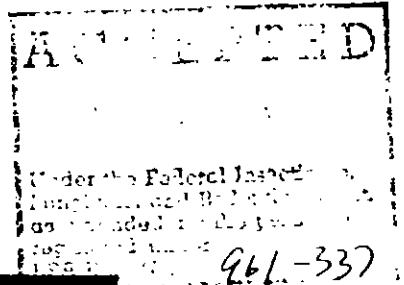
EPA Reg No. 961-337

(L) (D)  
EPA Est. 961-PA-01:961-IL-01

Superscript used is first letter of lot number

## GUARANTEED FERTILIZER ANALYSIS

|  |       |
|--|-------|
| Total Nitrogen (N)   | 19.0% |
| 2.3% Water Insoluble Nitrogen                              |       |
| Available Phosphoric Acid (P <sub>2</sub> O <sub>5</sub> ) | 4.0%  |
| Soluble Potash (K <sub>2</sub> O)                          | 9.0%  |
| 20% of Nitrogen from organic sources                       |       |



**CAUTION**  
**KEEP OUT OF REACH OF CHILDREN**  
 See Back Panel for Additional Precautionary Statements

**MANUFACTURED BY**  
**Lebanon Chemical Corporation**  
**Lebanon, PA 17042**

Page 1 of 6 Pages  
961-337  
01/16/95

**BEST AVAILABLE COPY**

**PRECAUTIONARY STATEMENTS**  
**HAZARDS TO HUMANS AND DOMESTIC ANIMALS**  
**CAUTION**

Harmful if swallowed. Avoid breathing dust. Causes moderate eye irritation. Do not get in eyes, on skin or on clothing. Wash thoroughly after handling and before eating or smoking. Wash all contaminated clothing with soap and hot water before re-use. Avoid contamination of food, feed or water supplies.

**STATEMENT OF PRACTICAL TREATMENT**

**CALL A PHYSICIAN IMMEDIATELY!** If a known exposure occurs or if poisoning is suspected, do not wait for symptoms to develop. Immediately initiate the recommended procedures described below and simultaneously contact a physician, the nearest hospital or a Poison Control Center, or call day or night:

**(800) 424-9300**

**PESTICIDE TEAM SAFETY NETWORK**

Inform the person contacted of the type and extent of exposure, describe the victim's symptoms and follow the advice given.

**NOTE:** Be sure to advise the person contacted that the active ingredient in this compound is a cholinesterase inhibitor and follow the advice given.

**NOTE TO PHYSICIAN**

Exposure to the active ingredient may cause cholinesterase inhibition. Atropine by injection is antidotal. 2-PAM is also antidotal when administered early and in conjunction with atropine.

**STATEMENTS OF PRACTICAL TREATMENT**

**IF SWALLOWED:** Call a physician or Poison Control Center immediately. Immediately give large amounts of water and induce vomiting by gagging the victim with a blunt object placed on the back of the victim's tongue. Give fluids until vomitus is clear. Do not induce vomiting or give anything by mouth to an unconscious person.

**IF INHALED:** Remove victim to fresh air. If not breathing, give artificial respiration, preferably mouth-to-mouth. If breathing is difficult, give oxygen, preferably with a physician's advice.

**IF ON SKIN:** Flush with plenty of water for at least 15 minutes. Remove contaminated clothing and shoes. Get medical attention if irritation occurs. Wash clothing before re-use.

**IF IN EYES:** Hold eyelids apart and flush eyes with large amounts of running water for at least 15 minutes. Get medical attention if irritation persists.

**BEST AVAILABLE COPY**

## ENVIRONMENTAL HAZARDS

This product is toxic to fish. Do not apply directly to water, or to areas where surface water is present or to intertidal areas below the mean high water mark. Do not apply where runoff is likely to occur. Do not contaminate water by cleaning of equipment or disposal of wastes. Do not apply when weather conditions favor drift from areas treated. Apply this product only as specified on this label.

## GENERAL PRECAUTIONS AND INFORMATION

- ✓ READ ALL DIRECTIONS BEFORE USING
- ✓ This product should be used only for recommended uses and at recommended rates.
- ✓ Sweep up spills on walks or patios and hose area
- ✓ Do not allow children or pets on treated lawns until product has been watered into the soil and grass is completely dry.
- ✓ Recommended for use on mineral soils only.
- ✓ Do not apply peat moss to lawn, ground covers or established ornamentals before treating.

This product is recommended for use on home lawns, parks and golf courses, on ornamental plants and on ground covers for control of crabgrass, annual bluegrass and other annual weeds listed.

Application must precede emergence of weeds from the soil. Crabgrass will emerge from the soil from 4 to 6 weeks before it is visible above lawn sod. If weeds are visible above the soil, it is too late for application.

**BEST AVAILABLE COPY**

## WEEDS CONTROLLED

Annual bluegrass (*Poa annua*)  
Barnyardgrass (Watergrass) (*Echinochloa spp*)  
Deadnettle (Herbit) (*Lamium spp*)  
Goosegrass (*Elyusine indica*)  
Hairy crabgrass (*Digitaria sanguinalis*)  
Lambsquarters (*Chenopodium album*)  
Redroot pigweed (*Amaranthus retroflexus*)  
Shepherdspurse (*Capsella bursa-pastoris*)  
Smooth crabgrass (*Digitaria ischaemum*)

## DIRECTIONS FOR USE

It is a violation of Federal law to use this product in a manner inconsistent with its labeling.

NOT FOR USE ON TURF BEING GROWN FOR SALE OR OTHER COMMERCIAL USE AS SOD, OR FOR COMMERCIAL SEED PRODUCTION OR FOR RESEARCH PURPOSES.

NOT FOR USE ON PLANTS BEING GROWN FOR SALE OR OTHER COMMERCIAL USE, OR FOR COMMERCIAL SEED PRODUCTION, OR FOR RESEARCH PURPOSES. FOR USE ON PLANTS INTENDED FOR AESTHETIC PURPOSES OR CLIMATIC MODIFICATIONS AND BEING GROWN IN INTERIOR PLANTSCAPES, ORNAMENTAL GARDENS OR PARKS, OR ON GOLF COURSES OR LAWNS AND GROUNDS

## TIMING OF APPLICATION

**DICHONDRA LAWNS:** This product can be applied to dichondra lawns at the time of seeding or any time thereafter

**GRASS LAWNS:** This product should be applied only to well-established grass lawns. Can be used on the following established turf grasses:

|                         |                    |                    |
|-------------------------|--------------------|--------------------|
| Bahia                   | Cent pedegrass     | Poa trivialis      |
| Bentgrass spp           | Fescue spp         | St. Augustinegrass |
| Bermudagrass spp        | Pensacola Bahia    | Red Top            |
| Perennial Bluegrass spp | Perennial Ryegrass | Zoysiagrass        |

**ORNAMENTALS AND GROUND COVERS:** This product should be applied only to the following well-established ornamentals and ground covers:

|                   |                  |                 |
|-------------------|------------------|-----------------|
| Alyssum           | Coral Bell       | Stock           |
| Aster             | Daisy            | Sweet Pea       |
| Bachelor's Button | Marigold         | Wall Flower     |
| Calendula         | Pansy            | Zinnia          |
| Candytuft         | Primrose         | Ranunculus      |
| Daffodil          | Gladiolus        | Tulip           |
| Dahlia            | Narcissus        | Pyracantha      |
| Freesia           | Juniper          | Sandankwa       |
| Abelia            | Monterey Cypress | Star Jasmine    |
| Azalea            | Monterey Pine    | Tobira          |
| Azara             | Myrtle           | Periwinkle      |
| Boxwood           | Hypericum        | Sedum           |
| Ajunga            | Ice Plant        | Wild Strawberry |
| Campanula         | Ivy              |                 |
| Gazania           | Rochysandra      |                 |

Page 4 of 6 Pages  
061-337  
01/16/95

**BEST AVAILABLE COPY**

For control of crabgrass, apply at the recommended rate (see **RATES OF APPLICATION**) any time from Fall (September or October) through early Spring for Spring and Summer control. With a late Winter or an early Spring application, the application must be made prior to crabgrass emergence (see **PRODUCT INFORMATION**)

For control of annual bluegrass and other annual weeds, apply at the recommended rate (see **RATES OF APPLICATION**) before the weeds emerge from the soil.

Consult weed specialists of the State Agricultural Extension Service or the State Agricultural Experiment Stations for additional information, as the timing of application will vary with local conditions.

Where germination of crabgrass, annual bluegrass and other weeds extends into the late Summer and early Fall, a second application of this product at the recommended rate should be made 4 to 5 months after the initial application.

This product should be applied with a lawn spreader or any other applicator that will give uniform coverage. A more uniform application can be made by spreading half of the required amount over the area to be treated then applying the remainder at right angles or crosswise. Avoid misses by over-lapping slightly.

**CRABGRASS ONLY:** Apply 12 to 16 lbs. of this product uniformly on 2,500 square feet. (209 to 279 LB/Acre)

**ANNUAL BLUEGRASS AND OTHER ANNUAL WEEDS:** Apply 20 lbs. of this product uniformly over 2,500 sq ft (348 LB/Acre)

Sprinkle the area with water for 10 to 15 minutes after application to wash the product down into the soil where the weed seeds are located

### RATE TABLE AND SPREADER SETTINGS

| Spreader                         | Speed         |            | Width<br>of<br>Coverage | Table and Spreader Settings      |                                  |
|----------------------------------|---------------|------------|-------------------------|----------------------------------|----------------------------------|
|                                  | Ground<br>MPH | PTO<br>RPM |                         | 20 #/2500 Sq.Ft.<br>348 Lb./Acre | 12#/2500 Sq. Ft<br>209 Lb./Acre. |
| Show 'N Tell (Drop Type)         | 3             |            | 6                       |                                  | 4 1/2                            |
| Jet Spred <sup>TM</sup> (Rotary) | 3             |            | 8 Ft                    | 4                                | 2 1/2                            |
| Cyclone                          | 3             |            | 8 Ft                    | 4                                | 2 1/2                            |
| Ezee Flow (109)                  | 5             | 540        | 30 Ft.                  | C3                               | C2                               |
| Lely Wheel-Drive                 | 4 1/2         |            | 39 Ft.                  | 7II                              | 5II                              |
| Lely PTO-Drive                   | 5             | 425        | 39 Ft                   | 7II                              | 5II                              |
| Scotts (Drop Type)               | 3             |            |                         | 4 1/2                            | 3                                |
| Scotts (Rotary)                  | 3             |            | 6 Ft                    | G                                | C                                |

These settings were calibrated and field tested. However, age and condition of spreader, speed of operation and evenness of terrain may require slightly different settings for desired coverage

## RESEEDING

Any material that provides effective control of annual grasses may affect new lawn grass seedings which germinate after treatment. Proper fertilization and watering will encourage the existing turfgrass to fill in the lawn or bare spots formerly occupied by crabgrass.

The following procedures are suggested in order to minimize any stunting of turfgrasses which may occur when reseeding into areas treated with this product:

1. Do not reseed within 4 months after application.
2. Renovate the area to be reseeded by raking thoroughly to scarify the soil surface. Where practical, mix peat in with the soil to provide an optimum seed bed.
3. When turf disease or physiological disorders necessitate reseeding sooner than 4 months after application, apply powdered activated charcoal prior to reseeding to deactivate the Betasan<sup>®</sup>.

Apply the activated charcoal at a rate of 7 lbs. in 14 gals. of water per 1,000 sq. ft. (300 lbs. in 600 gals. of water per acre)

Following application, irrigate the turf with sufficient water to wash the charcoal into the soil.

Reseed no sooner than 7 days after applying the charcoal.

## STORAGE AND DISPOSAL

Do not contaminate water, food or feed by storage or disposal.

**STORAGE:** Keep in original container in a cool, dry area, away from extreme heat and direct sunlight. Do not store near food, feed, seeds or other pesticides.

**PESTICIDE DISPOSAL:** Wastes resulting from the use of this product may be disposed of on site or at an approved waste disposal facility.

**CONTAINER DISPOSAL:** Completely empty bag into application equipment. Then dispose of empty bag in a sanitary landfill or by incineration, or, if allowed by State and local authorities, by burning. If burned, stay out of smoke.

## WARRANTY

The Manufacturer warrants that this product conforms to its chemical description and is reasonably fit for the purpose stated on the label when used in accordance with directions under normal conditions of use, but neither this warranty nor any other warranty of merchantability or fitness for a particular purpose, expressed or implied, extends to the use of this product contrary to label instructions, or under abnormal conditions, or under conditions not reasonably foreseeable to Seller, and Buyer assumes the risk of any such use.

**BEST AVAILABLE COPY**