

Net Wt.  
7 Lbs.  
HO 42

# Greenfield

**\$5.95**  
TREATS  
2500 SQ. FT.

PRODUCTS OF ELI LILLY AND COMPANY RESEARCH

*Improved*

[961-290]

# BUG OUT

ACCEPTED  
NOV 20 1970  
AT INSECTICIDE  
AND FUNGICIDE ACT  
POISON REGISTER  
147-2

## The Lawn Insecticide that Means Business!

### STOPS LAWN INSECT DAMAGE



GRASSHOPPERS



ANTS



SOIL WEBWORMS



LEAFWORMS



CRICKETS



LEAF HOPPERS

CONTAINS SEVIN\*

**CAUTION:** Keep out of reach of children. See back panel for additional caution statements.

Active Ingredient  
Carbaryl (1-naphthyl N-methylcarbamate)\* 7.15%  
Inert Ingredients 92.85%

\*Sevin is the registered trademark of Union Carbide Corporation.

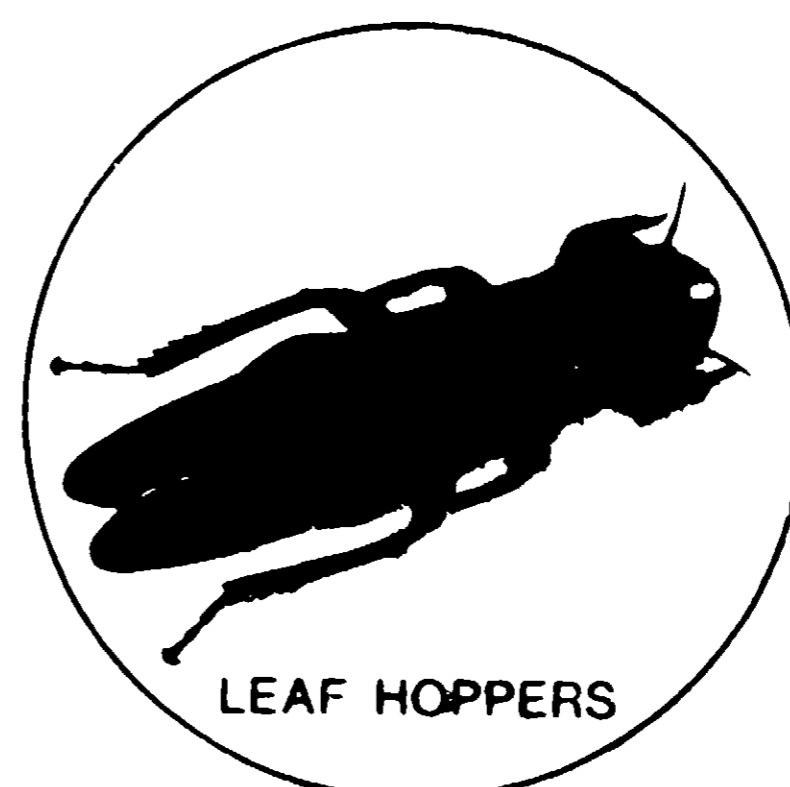
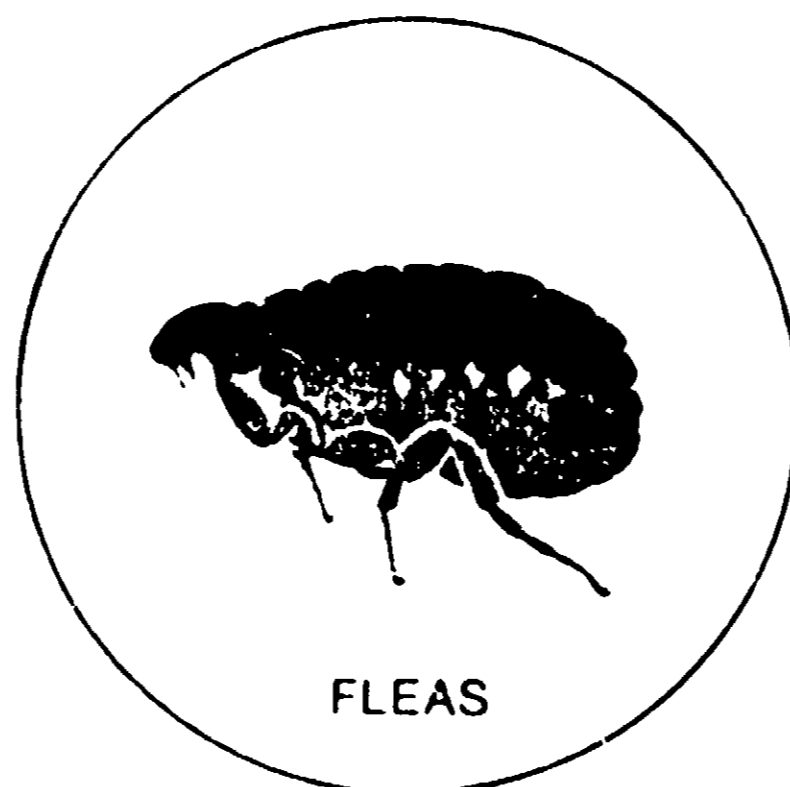
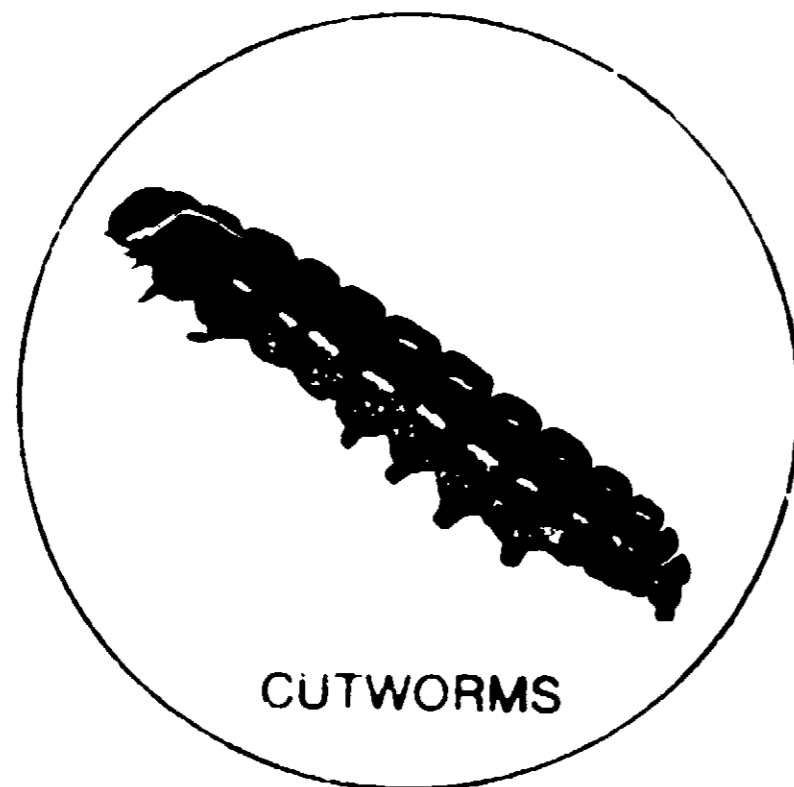
ELANCO PRODUCTS COMPANY - A DIVISION OF ELI LILLY AND COMPANY  
Lilly

BY GIBBY AND

CHINCH BUGS

ANTS

SOD WEBWORMS



# CONTAINS SEVIN\*

**CAUTION:** Keep out of reach of children. See back panel for additional caution statements.

Active Ingredient:

Carbaryl (1-naphthyl N-methylcarbamate)\* . . . 7.15%

Inert Ingredients . . . . . 92.85%

\*Sevin is the registered trademark of Union Carbide Corporation.

ELANCO PRODUCTS COMPANY • A DIVISION OF ELI LILLY AND COMPANY

© Lilly

BY 0312 AMB

Net Wt.  
7 Lbs.  
HO 42  
TREATS  
2500 SQ. FT.

# Greenfield

PRODUCTS OF ELI LILLY AND COMPANY, RESEARCH

*Improved*

# BUG OUT<sup>®</sup>

## LAWN INSECTICIDE

Kills the following lawn pests:

Ants  
Armyworms  
Chinch Bugs  
Cutworms

Earwigs  
Fall Armyworms  
Fleas  
Leaf Hoppers

Millipedes  
Mosquitoes in grass  
Sod Webworms (moths & larvae)

**WHEN TO APPLY:** May be applied any time when surface and soil pests are a problem.

**HOW TO APPLY:** Follow these directions carefully for best results. Measure the lawn area to be treated. Spread the contents of this container evenly over 2500 sq. ft. of area using one of the spreader settings shown below.

**To kill lawn pests,** first mow lawn to a height of 1 to 1½ inches, water thoroughly, then apply insecticide and allow to remain on the foliage for 48 hours. Keep children and pets off the treated area during this period. Then drench the lawn heavily with water. Keep children and pets off until treated lawn is dry.

### SPREADER SETTINGS

The settings listed below are calculated to apply GREENFIELD BUG OUT at the recommended rate. These settings are approximate. Check application rate of your spreader before applying. Settings vary with type, age and condition of spreader.

Spreader	Setting	Spreader	Setting
		(push-on, drop type)	7

To kill lawn pests, first mow lawn to a height of 1 to 1½ inches, water thoroughly, then apply insecticide and allow to remain on the foliage for 48 hours. Keep children and pets off the treated area during this period. Then drench the lawn heavily with water. Keep children and pets off until treated lawn is dry.

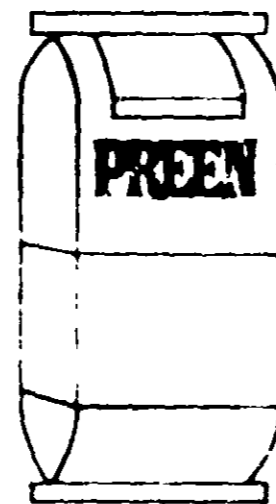
## SPREADER SETTINGS

The settings listed below are calculated to apply GREENFIELD BUG OUT at the recommended rate. These settings are approximate. Check application rate of your spreader before applying. Settings vary with type, age and condition of spreader.

Spreader	Setting	Spreader	Setting
<b>GREENFIELD Model 105</b>	<b>8</b>	Jackson (drop type)	7
Lawn Beauty	5	Modern	5
Sears	7	Ace (dial on hopper)	5
Scotts 35, 75, 100, automatic	7		

NOTE: Do not use this product in centrifugal (broadcast) type spreaders.

**GREENFIELD "YARD-WIDE" GUARANTEE: ELANCO GUARANTEES YOU WILL BE SATISFIED WITH THE PERFORMANCE OF THIS FINE PRODUCT, WHEN USED AS DIRECTED, OR YOUR MONEY BACK. SIMPLY SEND EVIDENCE OF PURCHASE TO ELANCO PRODUCTS COMPANY AT THE ADDRESS SHOWN BELOW.**



For weed-free ornamental beds, borders and vegetable gardens—use **GREENFIELD PREEN**

For most accurate coverage, apply with **GREENFIELD Model 105 Show 'N Tell Spreader**



**CAUTION:** Harmful if swallowed or inhaled. Avoid contact with skin; wash thoroughly after using. Do not contaminate feed and foodstuffs.

Destroy empty container. Do not reuse.

The manufacturer makes no warranty, express or implied, concerning this product or its use, which extend beyond the description on the face hereof. All statements made concerning this product apply only when used as directed.

**ELANCO PRODUCTS COMPANY • A DIVISION OF ELI LILLY AND COMPANY  
INDIANAPOLIS, IND. 46206, U.S.A.**

USDA Reg. No. 1471-82

