

FLOWER and Shrub WEED CONTROL



WEEDS CONTROLLED

GRASSES

- Annual Bluegrass
- Coolgrass
- Stinkgrass
- Barnyard Grass
- Green Grass
- Proso

BROADLEAF WEEDS

- Chickweed
- Knotweed
- Figwort
- Lambquarters
- Carrotweed
- Purple

TOLERANT ESTABLISHED FLOWERS

- Ageratum
- Aster
- Begonia
- Calendula
- California Poppy
- Calliopsis
- Forget-me-not
- Geranium
- Delphinium

- Forget Me Not
- Impatiens
- Marigold
- Salvia
- Verbena
- Verbena
- Verbena
- Verbena

- Verbena
- Verbena
- Verbena
- Verbena
- Verbena
- Verbena
- Verbena
- Verbena

Do not apply to Azalea, Myrtle, Pachyandra, Periwinkle or other ornamental groundcovers as injury may result.

DIRECTIONS

Rate of application 1 lb per 125 sq ft.

Before applying remove all existing grasses and weeds as FLOWER & SHRUBS WEED CONTROL kills sprouting seeds but no established plants.

In established flower gardens, flower beds and shrubbery apply in the spring before grasses and weeds begin to sprout. At application, work granules into the soil to a depth the weed preventer can reach.

In new transplants apply at a rate of 1 lb per 125 sq ft until plants become established 12 to 3 inches in height.

CAUTION:

Harmful if swallowed. Avoid inhalation of dust or contact with skin. Avoid contamination of feeds, foodstuffs or fish ponds. Wash thoroughly after use. This product is for use only on ornamental plants in flower beds and lawns.

FLOWER

LEBANON

Do not apply to Alys, Myrtle, Pachysandra, Periwinkle or other ornamental groundcovers as injury may result.

DIRECTIONS

Rate of application 1 lb per 175 sq ft.

Before applying remove all existing grasses and weeds as FLOWER & SHRUBBERY BED WEED KILLER will sprout seeds but no established plants.

In established lawns, Flower Bed and Shrubbery Bed Weed Killers will begin to spread. At application, work lightly into the soil to improve the weed control.

In new lawns, may be applied after seeding, provided the lawn is established 12 to 3 inches in height.

In new transplants application should be delayed until plants become established in 3 weeks.

CAUTION:

Harmful if swallowed. Avoid inhalation of dust or contact with skin. Avoid contamination of feeds, foodstuff or fish ponds. Wash thoroughly after using. This product is for use only on ornamental plants.

Do not reuse container. Destroy when empty.

Lebanon Chemical Corporation, the manufacturer, warrants that this product conforms to its chemical description and is reasonably fit for the purpose stated on the label when used in accordance with directions under normal conditions of use, but neither this warranty nor any other warranty of merchantability or fitness for a particular purpose, express or implied, is made by the use of this product contrary to label instructions, or under abnormal conditions, or under conditions not reasonably foreseeable to seller, and buyer assumes the risk of any such use.

TREATS 5,000 SQ. FT.

NET WEIGHT 20 LBS.

LEBANON WEED AND FEED 10-6-4 WITH 2,4-D AND MCPP

MINIMUM GUARANTEED FERTILIZER ANALYSIS

Total Nitrogen (N)	10.0%
Available Phosphoric Acid (P ₂ O ₅)	6.0%
Soluble Potash (K ₂ O)	4.0%
Potential Acidity 1.00 lbs. Calcium Carbonate per ton.	

LEBANON CHEMICAL CORPORATION
LEBANON, PA. 17042

FOR A LUXURIOUS, WEED FREE LAWN

The 10-6-4 fertilizer stimulates grass growth to quickly conceal spots where weeds have died. Kills weeds and grows healthy green grass in one application.

EFFECTIVE WEED CONTROL

Kills many common weeds, including buckhorn, dandelion, chickweed, clover, ground ivy, knotweed, plantain.

SAFE FOR ESTABLISHED LAWNS

Will not harm most lawn grasses. May cause some temporary browning, particularly on Seaside, Arlington and Congressional bent grasses. If browning is noted, water thoroughly to expedite recovery.

SPREADER SETTINGS

Lawn Beauty	5	Central	6	Stearns	5
MID	5	Quinn Turf	5	Jackson	6
Cyclone	4	Scott	4 1/2	Glorton	6

NOTE: Above spreader settings are approximate. Check your spreader on 500 sq. ft. and adjust to apply 5 or 100 sq. ft. Rate of seed, moisture and spreader condition can vary the spreader settings necessary to apply the correct amount.

When applying with a sprayer type spreader, use extreme caution to avoid any contact or application to desirable plants.

DIRECTIONS

The best time to destroy weeds is when they are young and actively growing, before they crowd out desirable grasses. Apply at the rate of 4 lbs. per 1,000 sq. ft. in Spring or early Fall, when ground moisture is adequate and weeds are actively growing. If used during dry period, water lawn thoroughly 24 hours prior to application.

For persistent weeds, when weeds reappear, or if a heavy rain occurs within 2 days after application, a second application may be necessary.

Apply to new lawns only after 2nd or 3rd mowing. Do not apply to very young grass, or to predominantly bent grass turf.

Do not mow, water, or make heavy use of lawn for at least 24 hours after application.

CAUTION

Avoid inhaling dust. Avoid contact with skin, eyes, or clothing. In case of eye contact, flush with water. Vapors from this product may injure susceptible plants in the immediate vicinity. Bermudagrass, St. Augustine grass, Dichondra, Clover and Carpetgrass may be injured. Avoid drift to susceptible plants, as this product may injure flowers, ornamentals, and vegetables.

Do not store near fertilizers, seeds, insecticides or fungicides. Clean spreader thoroughly after use.

Do not reuse container. Destroy when empty. Bury in a safe place. Do not burn.

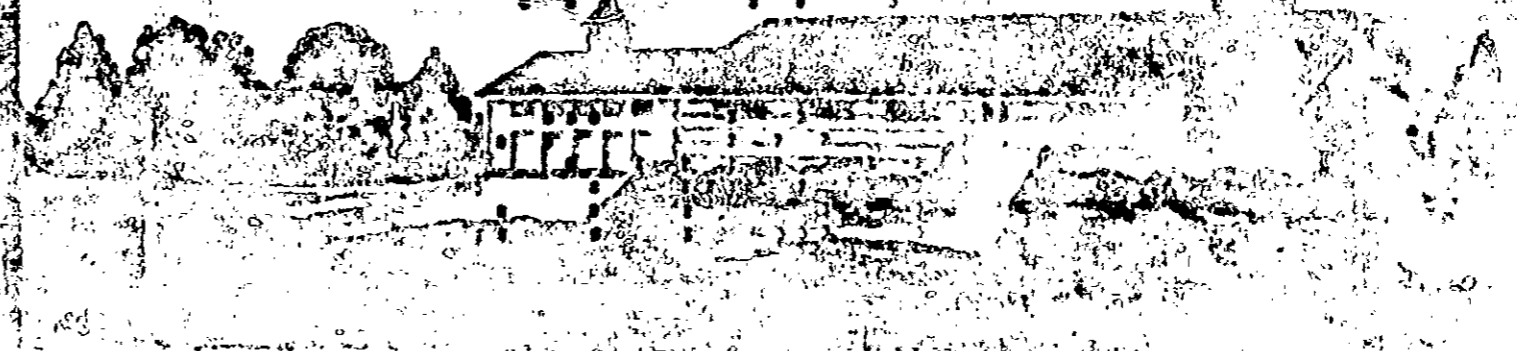
Do not contaminate water by cleaning of equipment, or disposal of wastes.

WARRANTY

Lebanon Chemical Corporation warrants that this product conforms to its chemical description and is reasonably fit for the purpose stated on the label. It is not intended to be used in conjunction with directions under normal conditions of use, but neither this warranty nor any other warranty of merchantability or fitness for a particular purpose, express or implied, extends to the use of this product for any other purpose, or under abnormal conditions, or under conditions not reasonably foreseeable to seller and buyer assumes the risk of any such use.

ACCEPTED
July 18 1972

UNDER THE FEDERAL INSECTICIDE,
FUNGICIDE AND RODENTICIDE ACT.
EPA REG. NO. 541-263
TO THE PUBLIC HEALTH SERVICE



LEBANON
WEED AND FEED 10-6-4

WEED AND FEED

10-6-4 WITH 2,4-D AND MCPP

CONTROLS

**BUCKHORN, DANDELION, CHICKWEED, CLOVER, GROUND IVY,
KNOTWEED, PLANTAIN, AND OTHER BROADLEAF WEEDS**

CAUTION: KEEP OUT OF REACH OF CHILDREN (SEE BACK PANEL FOR ADDITIONAL CAUTIONS)

ACTIVE INGREDIENTS:	
Dimethylamine salt of 2,4-dichlorophenoxyacetic acid*	0.868%
Dimethylamine salt of 2-(2-methyl-4-chlorophenoxy) propionic acid**	0.868%
INERT INGREDIENTS: 98.264%	
TOTAL 100.000%	

*Equivalent to 0.72% 2,4-dichlorophenoxyacetic acid
**Equivalent to 0.72% 2-(2-methyl-4-chlorophenoxy) propionic acid

E.P.A. Reg. No. 541-263

LEBANON CHEMICAL CORPORATION